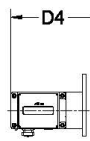


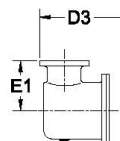


ROMET

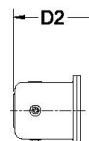
Rotary Gas Meters



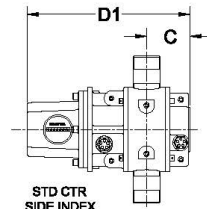
AdEM



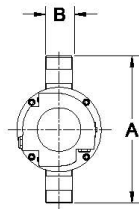
STDID / DCID



STD CTR
END INDEX



STD CTR
SIDE INDEX



Note: AMI/AMR adaptors available upon request.

METER SIZE	A	B	C	D1	D1 (no Mag. Hsg.)	D2	D3	D4	E1	WEIGHT (lbs)
RM30	10.50"	1.5" NPT	3.08"	10.55"	8.09"	12.03"	12.86"	13.75"	4.00"	12-15

RM30 - SOFT METRIC

SOFT METRIC RM30 1.5" NPT CONNECTION

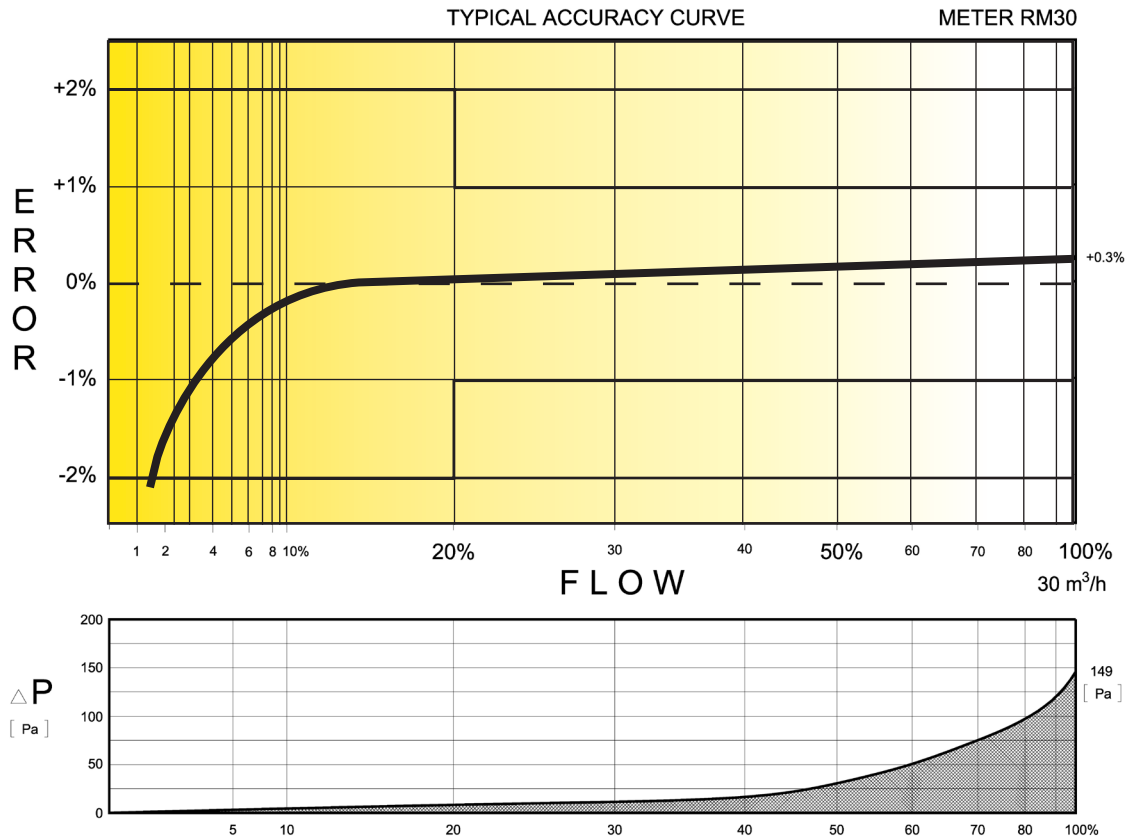
TECHNICAL SPECIFICATION

Connection (Threaded)	NPT	1.5"
MAOP	(kPa)	1206/1400
Flow Capacity	(m ³ /h)	30
Rangeability* (up to 1:160 @ atmospheric condition)		1:160
Start Rate	(m ³ /h)	.050
Stop Rate	(m ³ /h)	.040
Differential @ 100% Flow	(Pa)	149
Instrument Drive Rate	(m ³ /rev)	.1
LF Pulser (Optional)	(m ³ /pulse)	.1

*Note: It should be noted, that moving parts in the meters with a greater rangeability ratio are made to high class accuracy and tight tolerances. Improper installation, stresses on piping system due to temperature changes, settling and gas conditions can create a risk of meter rejection.

CORRECTED FLOW CAPACITY AND TYPICAL ACCURACY GUIDE

RM30 METER (SM ³ /H)	
Gauge Pressure kPa	RM30 Qmax = 30 m ³ /hr
1.72	
5	31.4
10	32.9
50	44.7
100	59.5
150	74.3
200	89.1
250	103.9
300	118.7
500	177.9
750	252.0
1000	326.0
1100	355.6
1200	385.2



ROMET

GAS METERS AND ELECTRONIC INSTRUMENTS
 Phone 905-624-1591 USA 1-800-387-3201
 www.rometlimited.com • email: romet@rometlimited.com

The values quoted are typical of normal production. They do not constitute a specification. Romet Limited reserves the right to change any information in this literature without notice. All of the information and data in this literature has been carefully compiled and thoroughly checked. However, Romet Limited will not assume responsibility for any possible omissions or errors.

ROMET and ROMET & DESIGN are registered trademarks of Romet Limited. Romet Limited's gas metering technology is protected under U.S. Patent No. 4,910,519 and 6,453,721 and Canadian Patent No. 1,293,568.