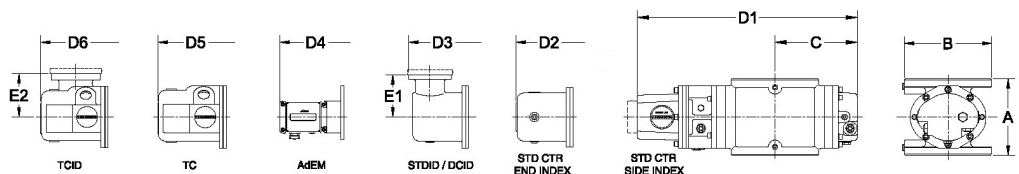
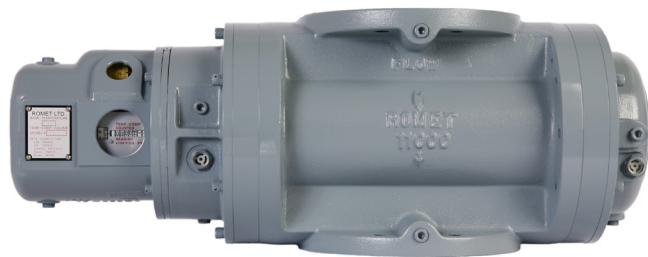




ROMET

Rotary Gas Meters



Note: AMI/AMR adaptors available upon request.

METER SIZE	ANSI 125 FF FLANGE	A	B	C	D1	D2	D3	D4	D5	D6	E1	E2	WEIGHT (lbs)
RM11000	4"	9.50"	Ø 9.0"	9.28"	22.39"	23.81"	24.66"	25.59"	25.13"	25.19"	4.00"	4.00"	56-66

RM11000 - IMPERIAL

IMPERIAL RM11000 4" FLANGE CONNECTION

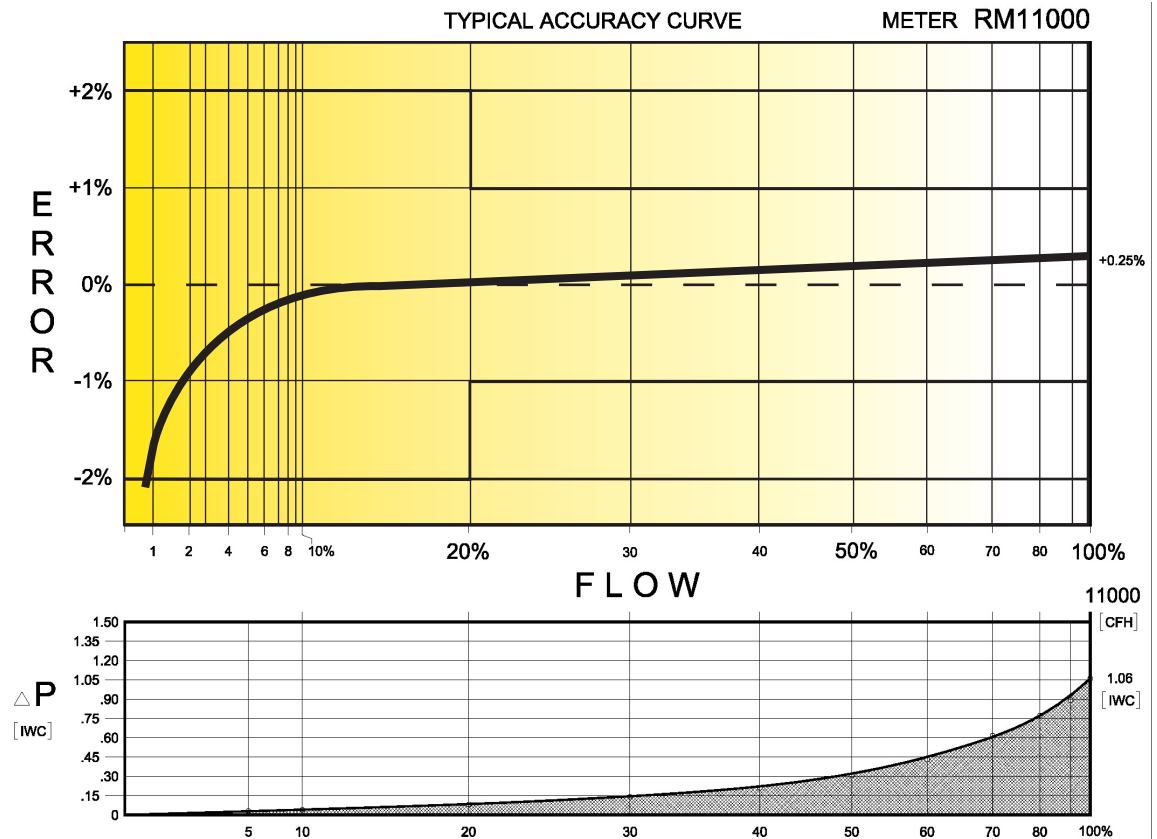
TECHNICAL SPECIFICATION

Connection (Flanged)	ANSI 125 FF	4"
MAOP	(psig)	175
Flow Capacity	(cfh)	11000
Rangeability* (up to 1:160 @ atmospheric condition)		1:160
Start Rate	(cfh)	6.5
Stop Rate	(cfh)	4.2
Differential @ 100% Flow	(I.W.C.)	1.06
Instrument Drive Rate	(cf/rev)	10/100
LF Pulser (Optional)	(cf/pulse)	10/100

*Note: It should be noted, that moving parts in the meters with greater rangeability ratio are made to high class accuracy and tight tolerances. Improper installation, stresses on piping system due to temperature changes, settling and gas conditions can create a risk of meter rejection.

CORRECTED FLOW CAPACITY AND TYPICAL ACCURACY GUIDE

RM11000 METER (SCFH)	
Gauge Pressure P.S.I.G. 0.25	RM11000 Qmax = 11000ft ³ /hr
2	11500
5	14487
10	18221
15	21955
20	25689
25	29423
50	48092
75	66762
100	85431
125	104100
150	122770
175	141439



ROMET

GAS METERS AND ELECTRONIC INSTRUMENTS
 Phone 905-624-1591 USA 1-800-387-3201
 www.rometlimited.com • email: romet@rometlimited.com

The values quoted are typical of normal production. They do not constitute a specification. Romet Limited reserves the right to change any information in this literature without notice. All of the information and data in this literature has been carefully compiled and thoroughly checked. However, Romet Limited will not assume responsibility for any possible omissions or errors.

ROMET and ROMET & DESIGN are registered trademarks of Romet Limited. Romet Limited's gas metering technology is protected under U.S. Patent No. 4,910,519 and 6,453,721 and Canadian Patent No. 1,293,568.