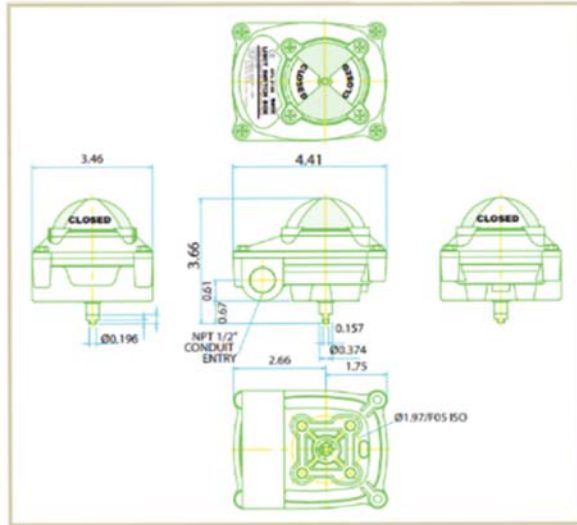


LF-APL210 NAMUR LIMIT SWITCH



LF-SERIES LIMIT SWITCH BOX



TECHNICAL SPECIFICATION

Enclosure	Die-cast aluminum/ epoxy powder coating
Weatherproof	IP67, Type 4.4x
Switch Type	2 SPDT Mechanical Switches 5A, 125-250VAC
Position Indicator	0-90° (90° turn free join close: red & open: yellow)
Shaft	304 Stainless Steel Namur Shaft
Conduit Connection	½" NPT
Mounting Bracket	MB-1.0:30 x 80H:20 (Stainless Steel)
Temperature Rating	(-68°F-185°F) (-20°C-80°C)
Switch Ratings	

Adjustment Mechanical Switch

1. Isolate Electrical Supply
2. Unscrew captive bolts
3. Remove the top cover, be careful not to damage the 'O' ring seal.
4. You will find two coloured quick set cams (1) & (2), one cam for each limit switch
5. Gently press down and rotate each spring loaded cam, against the mechanical switch lever until the desired contact is made and release. The cam is now set in the desired position.

WIRING DIAGRAM

MECHANICAL SWITCHES

