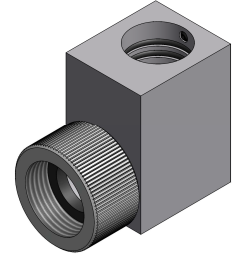


## AGG90.U

---

### Product Description

AGG90.U is a right angle adapter for mounting side-viewing flame scanner QRI2B2.B180B onto the end of a flame scanner tube.



---

### Recommended Installation Tools

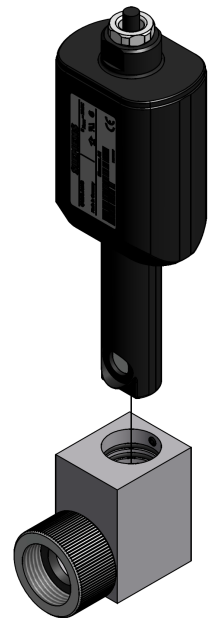
The following tools are recommended for installing AGG90.U:

- 1/16" hex key

---

### Installation Procedure

1. Slide flame scanner QRI2B2.B180B into the bore of AGG90.U that has two sealing O-rings until it bottoms out. Rotate the flame scanner so that the scanner eye is looking directly out of the threaded hole in AGG90.U. Using a 1/16" hex key, gently fasten the set screw in the back of AGG90.U into the housing of the flame scanner. Maximum torque for this set screw is 5 in-lb.
2. Mount AGG90.U onto the end of a 3/4" NPT or 3/4" NPSM flame scanner tube. AGG90.U has a swivel connection at the end so that the flame scanner can be positioned in any orientation for clearance or ease of wiring. If the swivel connection is loose on the flame scanner tube after tightening, remove one of the two rubber washers housed in the threads of AGG90.U. AGG90.U can be used with smaller flame scanner tubes by using a pipe bushing having 3/4" NPT male threads and the appropriate size female threads.



Information in this publication is based on current specifications. The company reserves the right to make changes in specifications and models as design improvements are introduced. Product or company names mentioned herein may be the trademarks of their respective owners. © 2009 SCC Inc.