

## AGA94.1

---

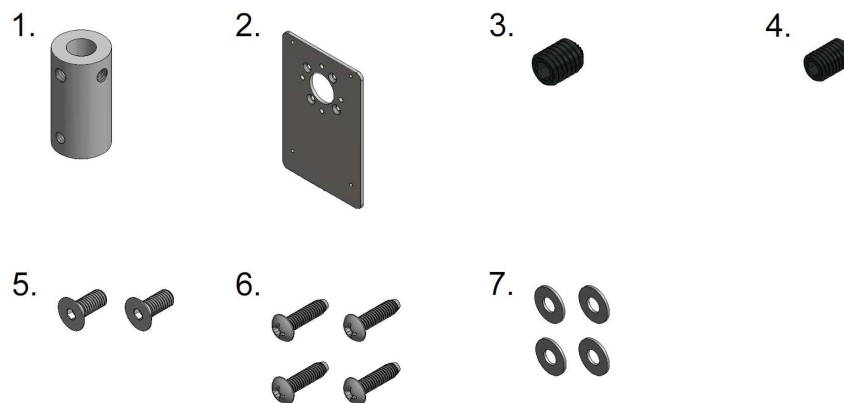
### Product Description

AGA94.1 is a bracket kit for mounting any SQM40.xx5xxx or SQM41.xx5xxx actuator to any Dungs DMK... series butterfly valve.

---

### Components Supplied

Figure 1 shows the components supplied with the AGA94.1 bracket kit:



**Figure 1: Pieces Supplied with the AGA94.1 Bracket Kit**

1. Coupling
2. Mounting bracket
3. M6 x 8mm knurl grip socket set screw
4. M5 x 8mm knurl grip socket set screw
5. (2) M5 x 12mm flat socket head cap screws
6. (4) #8-32 x 5/8" thread-forming screws
7. (4) #8 flat washers

---

## Recommended Installation Tools

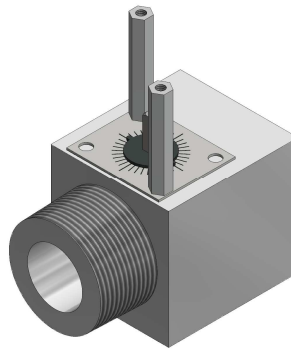
The following tools are recommended for installing the AGA94.1 bracket kit:

- 2.5mm hex key
- 3mm hex key
- Phillips screwdriver
- Blue Loctite

---

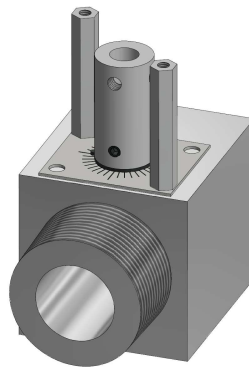
## Installation Procedure

1. Remove the actuator, mounting bracket, and coupling from the Dungs DMK... valve. After these components have been removed, the valve should look like Figure 2.



**Figure 2: Dungs DMK Valve with Actuator, Bracket, and Coupling Removed**

2. Slide the end of the coupling with the smaller bore over the valve shaft. The coupling should rest directly on top of the black position indicator. Line up the bottom set screw hole with the flat on the DMK... valve shaft. Using the 2.5mm hex key, install the M5 x 8mm socket set screw into the set screw hole and tighten to approximately 40 in-lb. The assembly should now look like Figure 3.

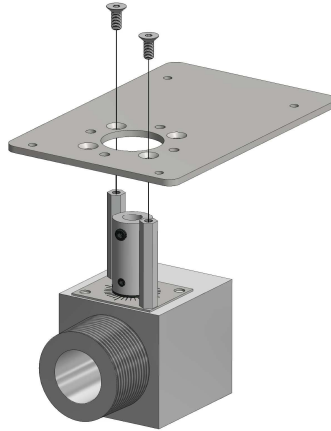


**Figure 3: Coupling Installation**

---

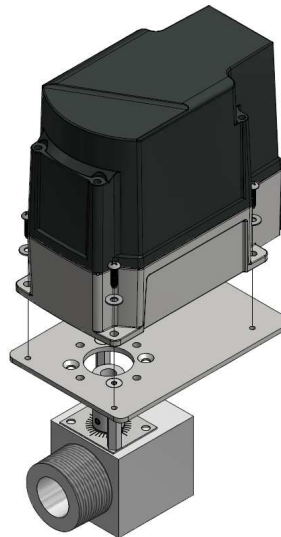
## Installation Procedure (continued)

3. Line up two of the countersunk holes in the mounting bracket with the two standoffs on the DMK... valve. Take note that the bracket can be mounted in four different orientations. Choose the desired orientation that offers the easiest path for conduit connections going to the SQM... actuator. Place a small amount of blue Loctite on the threads of the (2) M5 x 12mm flat socket head cap screws. Using the 3mm hex key, fasten the mounting bracket to the standoffs as shown in Figure 4.



**Figure 4: Mounting Bracket Installation**

4. Place the SQM4... actuator on the mounting bracket so that the four holes in the corners of the actuator line up with the holes in the bracket. Using the Phillips screwdriver, fasten the actuator to the mounting bracket using the (4) #8-32 x 5/8" thread-forming screws with the (4) #8 washers as shown in Figure 5.



**Figure 5: Actuator Installation**

---

## Installation Procedure (continued)

5. Rotate the valve disc so that the DMK... valve is fully closed and one of the two remaining set screw holes in the coupling lines up with the flat on the actuator shaft. Using the 3mm hex key, install the M6 x 8mm socket set screw into the set screw hole that lines up with the flat on the actuator shaft and tighten to approximately 65 in-lb. The assembly is now complete and should look like Figure 6 below.



**Figure 6: Completed Assembly**

Information in this publication is based on current specifications. The company reserves the right to make changes in specifications and models as design improvements are introduced. Product or company names mentioned herein may be the trademarks of their respective owners. © 2009 SCC Inc.