

AGA93.4

Product Description

AGA93.4 is a bracket kit for mounting any VKG... butterfly valve to a Honeywell ML7999 ControLinks actuator.

Components Supplied

Figure 1 shows the components supplied with the AGA93.4 bracket kit:

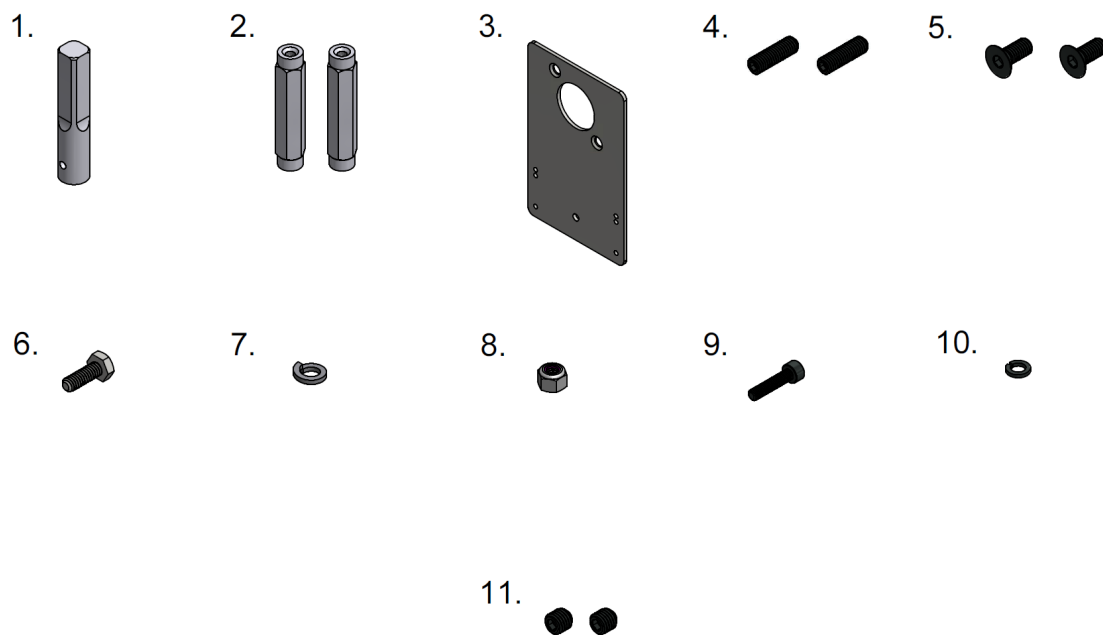


Figure 1: Pieces Supplied with the AGA93.4 Bracket Kit

- | | |
|--|--|
| 1. Coupling | 7. 1/4" split lock washer |
| 2. (2) hex standoffs | 8. 1/4"-20 hex locknut |
| 3. Mounting bracket | 9. M4 x 18mm socket head screw |
| 4. (2) M6 x 22mm socket set screws | 10. M4 split lock washer |
| 5. (2) M6 x 14mm flat socket head screws | 11. (2) 1/4"-28 x 1/4" socket set screws |
| 6. 1/4"-20 x 3/4" hex head screw | |
-

Recommended Installation Tools

The following tools are recommended for installing the AGA93.4 bracket kit:

- 1/8" hex key
- 3mm hex key
- 4mm hex key
- 1/2" open end wrench (or crescent wrench)
- Two 7/16" open end wrenches (or crescent wrenches)
- Red Loctite
- Blue Loctite

Installation Procedure

1. Slide the coupling over the VKG... valve shaft and line up the hole in the coupling with the threaded hole in the valve shaft. Using a 3mm hex key, the M4 split lock washer, and the M4 x 18mm socket cap screw, fasten the coupling to the valve shaft as shown in Figure 2 below.

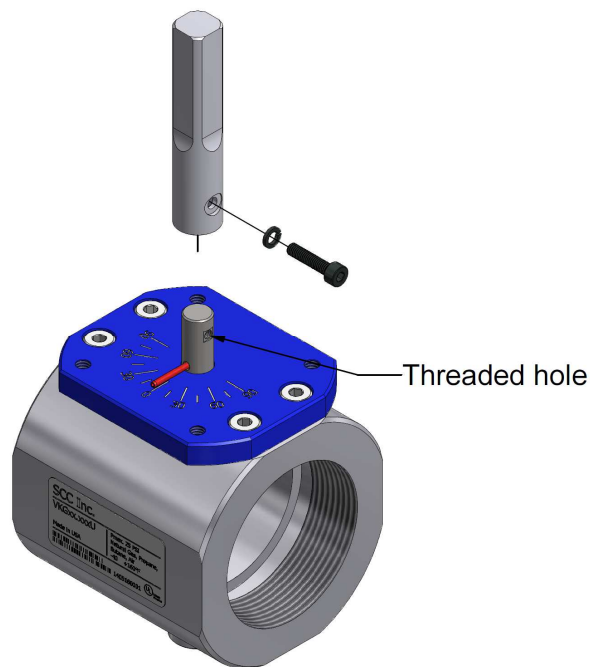


Figure 2: Coupling Installation

2. Place a small amount of red Loctite on the end of each of the (2) M6 x 22mm socket set screws. Using a 3mm hex key, fasten each socket set screw into one end of a hex standoff until the screw bottoms out. By hand, thread the standoffs into a pair of opposite M6 threaded holes on the top of the blue dial of the VKG... valve as shown in Figure 3. Take care to choose the proper pair of holes depending on the desired actuator orientation. Using the 1/2" open end wrench (or crescent wrench), tighten each standoff against the dial.

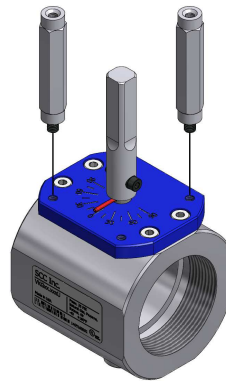


Figure 3: Standoff Installation

3. Place a small amount of blue Loctite on the end of each of the (2) M6 x 14mm flat socket head screws. Using a 4mm hex key, fasten the mounting bracket to the top of the standoffs as shown in Figure 4 below. The bracket may also be rotated 180° if desired.

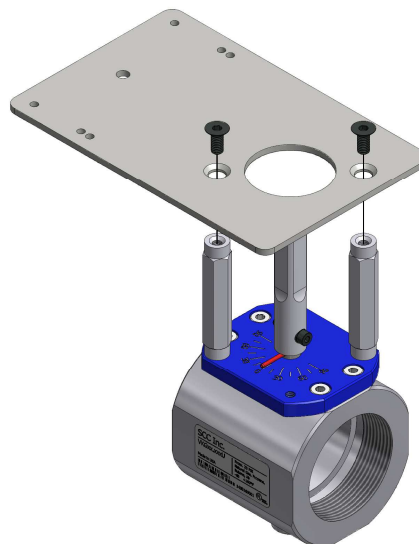


Figure 4: Mounting Bracket Installation

4. Remove the upper hub set screws from the Honeywell ControLinks actuator and replace them with the (2) 1/4"-28 x 1/4" socket set screws. Place the Honeywell ControLinks actuator onto the mounting bracket so that the square part of the coupling slides into the square bore of the actuator. Line up the mounting tab at the back of the actuator with the mounting hole in the center of the bracket. Using the 1/8" hex key, partially tighten the four hub set screws to secure the actuator to the coupling and ensure the actuator seats firmly against the bracket. Then, using the (2) 7/16" open end wrenches (or crescent wrenches), the 1/4"-20 x 3/4" hex head screw, the 1/4" split lock washer, and the 1/4"-20 hex locknut, secure the actuator to the mounting bracket as shown in Figure 5 below. Finally, tighten the four hub set screws against the coupling with a torque of 60 in-lb.

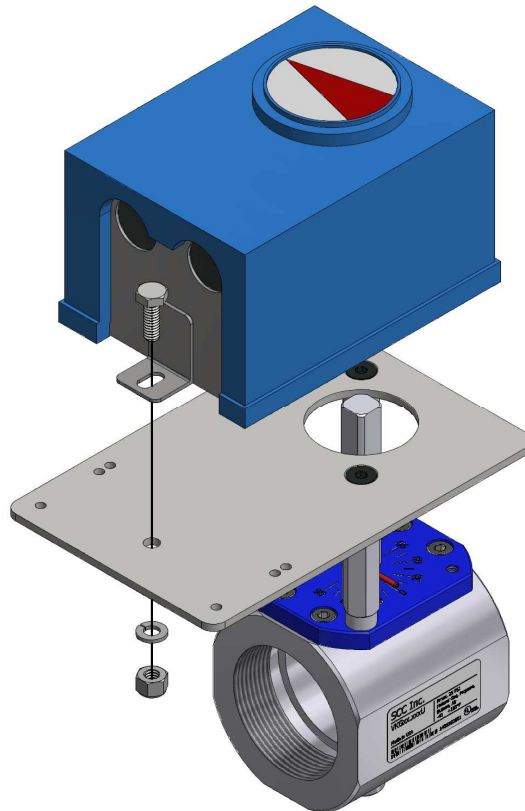


Figure 5: Actuator Installation

Information in this publication is based on current specifications. The company reserves the right to make changes in specifications and models as design improvements are introduced. Product or company names mentioned herein may be the trademarks of their respective owners. © 2009 SCC Inc.