

Honeywell

L4079A,B PRESSURETROL LIMIT CONTROLS

APPLICATION

L4079 Pressuretrol Limit Controls break the circuit when pressure rises to a preset value. The L4079A breaks two circuits (both sides of the power supply); the L4079B breaks one circuit.

These controls can be used with steam, air, non-combustible gases, and fluids noncorrosive to the stainless steel sensing element.

The L4079A has two ganged Micro Switch snap acting switches. The L4079B has one Micro Switch snap acting switch. These switches open automatically and must be manually reset.

INSTALLATION

CAUTION

1. Installer must be a trained, experienced serviceman.
2. Disconnect power supply before beginning installation.
3. Always conduct a through checkout when installation is complete.

LOCATION

Pressuretrol limit controllers must be mounted above the water line in steam boilers. They can be mounted alongside the pressure gauge, at a remote location, in a fitting provided by the boiler manufacturer, or in special mountings on low-water cutoffs.

MOUNTING

A steam trap must always be connected between the Pressuretrol unit and the boiler. The steam trap prevents boiler scale and corrosive vapors from attacking the diaphragm.

PRESSURE GAUGE MOUNTING:

To mount the limit control beside a pressure gauge, remove the gauge and install in its place a steam trap with a tee on top. Mount the Pressuretrol unit and pressure gauge on the side of the tee by means of nipples and elbows.

REMOTE MOUNTING:

If excessive vibration seems likely to affect the operation of the control, it may be located remotely, so long as all piping is suitable and properly pitched to drain all condensation back to the boiler.

BOILER MOUNTING:

If it is not convenient to mount the control adjacent to the pressure gauge, install a steam trap at the location on the boiler recommended by the boiler manufacturer and screw directly to the steam trap.

WIRING

CAUTION

Disconnect power supply before connecting wiring to prevent electrical shock and equipment damage.

All wiring must comply with local codes and ordinances. Refer to equipment manufacturer's information, if available, and to Fig. 1 for internal schematics and typical wiring hookups.

SETTING

To set the control, turn the pressure adjusting screw (see Fig. 2) until the pressure setting indicator on the front of the case is in line with the required control pressure set point. The indicator setting is the point at which the switch breaks contact.

MANUAL SETTING

When the circuits have broken automatically, they must be manually reset. After the pressure returns to normal, manually reset by depressing the manual reset button(s) firmly and releasing. The circuit is not complete until the reset button is released. The trip-free manual reset mechanism prevents the limit controller from operating as an automatic controller self-resetting) even if the manual reset button has been tied down.

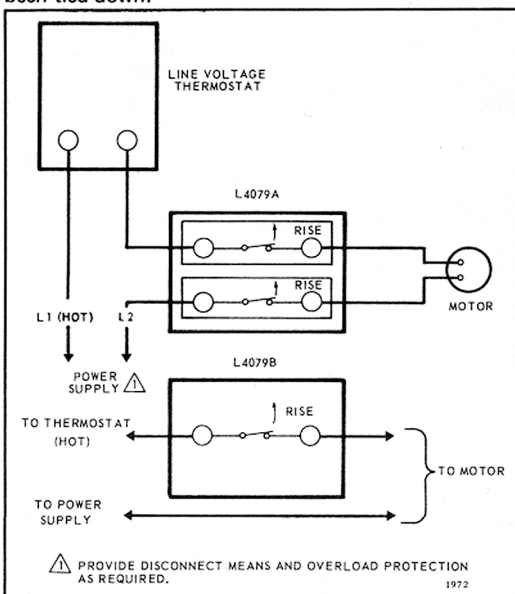


Fig. 1—Internal schematics and wiring. L4079A breaks both sides of power supply, L4079B breaks one side only.

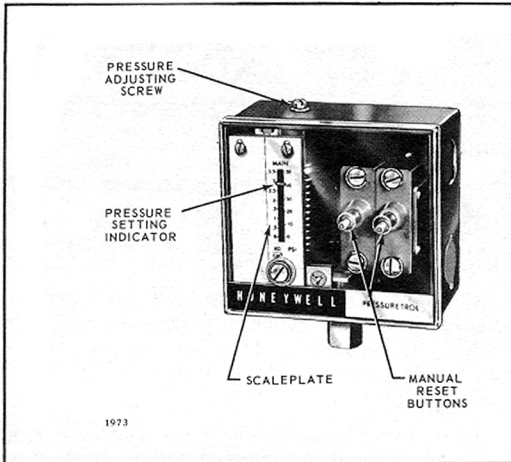


Fig. 2—Controls and indicators on L4079A, L4079B is same except it has only one reset button.

CHECKOUT

After the control has been installed and wired, checkout as follows:

1. Note the boiler pressure by checking the boiler pressure gauge (boiler pressure should be near the middle of the Pressuretrol pressure scale to perform this test properly).

2. Rotate the Pressuretrol pressure adjusting screw (see Fig. 2) until the pressure setting indicator on the front of the case corresponds to the boiler pressure gauge reading.

3. The limit control should break the control circuit(s) when the boiler pressure gauge reading equals or slightly exceeds the Pressuretrol pressure setting.

4. If the limit control is operating properly, manually reset it and adjust the pressure adjusting screw until the pressure setting indicator is in line with the required limit set point.

WARRANTY "Unless otherwise specified, the Company warrants all Residential Division equipment manufactured by it and bearing its nameplate to be free from defects in workmanship and materials under normal use and service as follows:

1. Equipment which is received transportation prepaid at the factory originating shipment (1) within twelve months after date of manufacture, or (2) with a certification by the installer to be within twelve months after date of installation, and found by the Company's inspection to be defective in workmanship or materials within the guarantee, will be repaired or replaced at the Company's option, free of charge and returned lowest cost transportation prepaid. Premium transportation will be used at customer's request and expense;
2. If inspection by the Company does not disclose any defect covered by the guarantee, equipment will be repaired or replaced and the Company's regular service charge will apply;
3. WITH EXCEPTION OF THE FOREGOING AND UNLESS SPECIFICALLY EXPRESSED IN WRITING, THE COMPANY MAKES NO EXPRESS WARRANTIES, NO WARRANTIES OF MERCHANTABILITY AND NO WARRANTIES WHICH EXTEND BEYOND THE DESCRIPTION OF THE FACE HEREOF."

HONEYWELL MINNEAPOLIS, MINN. 55408 INTERNATIONAL Sales Offices in all principal cities of the world. Manufacturing in Australia, Canada, Finland, France, Germany, Japan, Mexico, Netherlands, Spain, Taiwan, United Kingdom, U.S.A.