

TECHNICAL SERVICE BULLETIN



BCS Scythe Cutter Bar

How to identify your cutter bar

To identify your cutter bar, the most important piece of information we require is the number that is etched on the top of each individual blade section on your cutter bar.

If the blades are covered in dirt then you can use emery paper to clean the blade to see the numbers. Once you have the number you can establish which type of cutter bar you have.

Number	Cutter Bar Type
50696	Europa
59015	Top Down
58716	Laser
28096	Duplex
02466	Wide Blade
48945	Narrow Blade

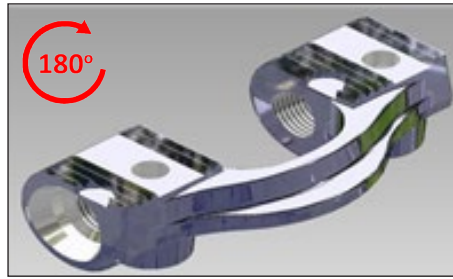


How to order the correct cutter bar

1. Find the number stamped on each individual blade and identify your cutter bar using the table above.
2. Count how many teeth are on the top cutter bar.
3. Contact Tracmaster's Spare Parts Department on 01444 247689 quoting the number etched on the blade and the number of blades on the top bar.
4. If you have a Europa cutter bar, does your steel drive horseshoe look like one of the images below?



Or does it look like this?



If your steel drive horseshoe looks like image **A**, **B** or **C** then you will need to purchase a cutter bar with a new steel drive horseshoe. The part numbers for the top bars **including steel drive horseshoe** are:

Bar Length		No. of Teeth/Blades	Part No.
30"	80cm	15	59258875
38"	100cm	19	59258876
44"	115cm	23	59258877
53"	135cm	27	59258878

Please note that once you have purchased the top bar with a new steel drive horseshoe you will not need to purchase another steel drive horseshoe. You can purchase just the new top bars.

If your steel drive horseshoe looks like image **D**, then you already have the new type steel drive horseshoe and so the part numbers you will need are:

Bar Length		No. of Teeth/Blades	Part No.
30"	80cm	15	59058789
38"	100cm	19	59058790
44"	115cm	23	59058791
53"	135cm	27	59058792

If you require further assistance please contact our Technical Department (technical@tracmaster.co.uk) or our Spare Parts Department (spares@tracmaster.co.uk) or phone 01444 247689.