

TECHNICAL SERVICE BULLETIN



BCS Power Units (inc. CAMON Rotavators) PowerSafe® models

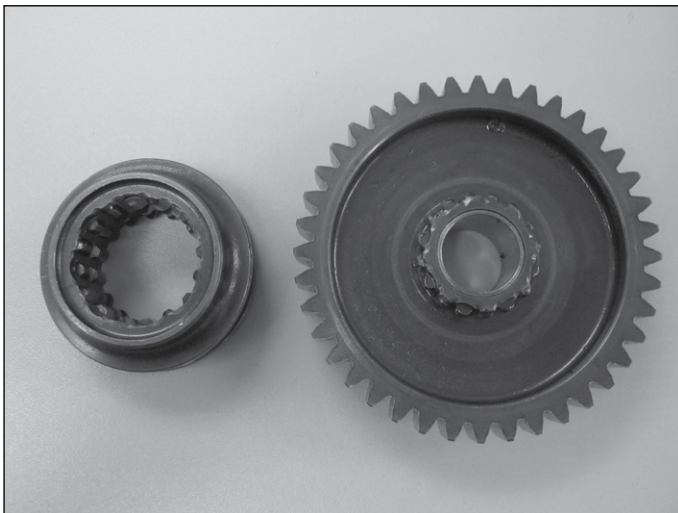
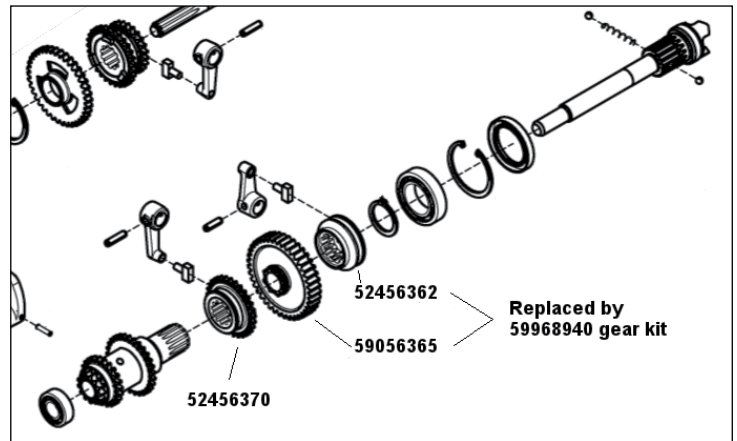
PTO Gear Changes

The design of the PTO gears has changed.

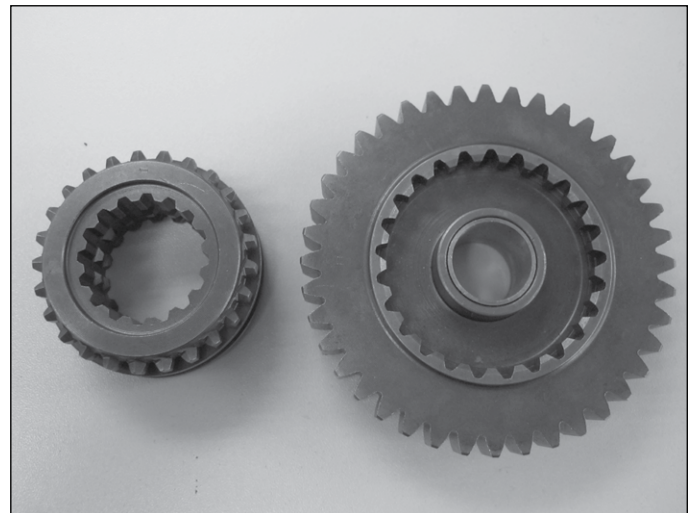
The two gears in the gear kit (part no: 59968940) are a direct replacement for the PTO gear (part no: 52456362) and intermediate gear (part no: 59056365).

IMPORTANT: Both gears must be changed.

The forward/reverse gear (part no: 52456370) has not been modified and will work with the new PTO gear kit.



These are the 'old' PTO gears, 52456362 and 59056365. Both of these gears should be removed and disposed of when fitting the new gears in the gear kit



These are the new design of PTO gears included in the gear kit 59968940. Both gears should be used.

If you require further assistance please contact our Technical Department via email technical@tracmaster.co.uk or phone 01444 247689.

25 September 2014