

HOW TO FIT GREENTEETH®

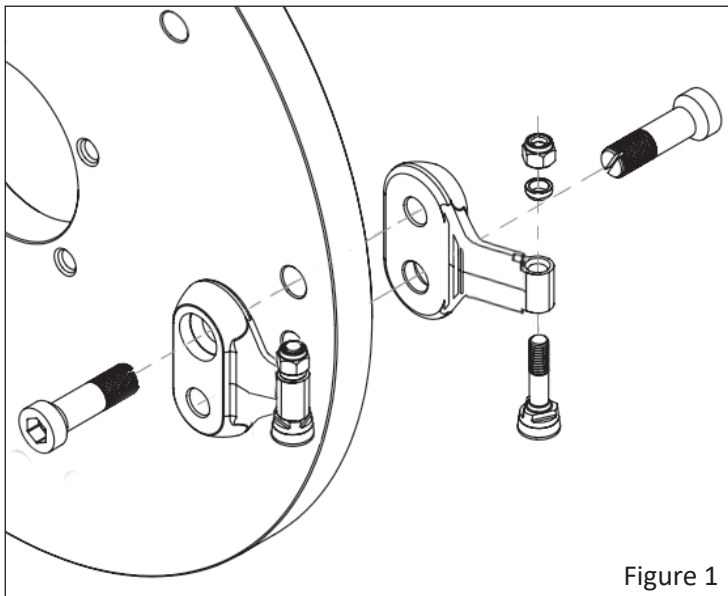


Figure 1

Wheel Assembly

There are two types of tooth holder on the cutting disc, a straight tooth holder and an angled tooth holder. There are four of each type (eight in total) and they are fitted in pairs, with one of each type on either side of the cutting disc (figure 3).

The holders must be fitted alternately, eg, the first pair would be a straight holder and an angled holder, then the second pair would be an angled holder and a straight holder, and so on, see figure 3.

The tooth fits up into the tooth holder, and then the spacer and nut go on top (figure 2).

The tooth holders are reversible; each holder has one threaded hole and one counter-bored hole which allow the tooth holder bolts to feed into the wheel from opposite sides to ensure a strong secure setup.

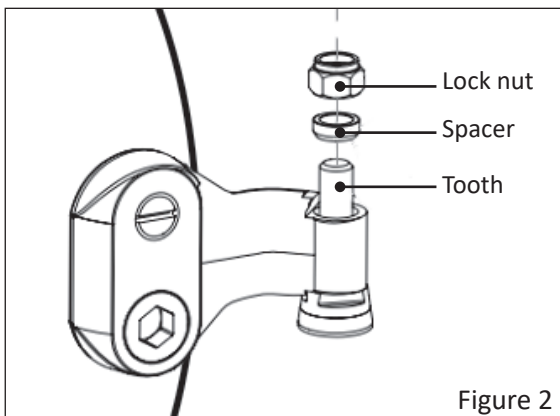


Figure 2

Each tooth holder must be tightened to a torque setting of 244Nm if using anti-seize (copper slip) or 325Nm dry.

Spacer Assembly

The beveled edge on the spacers for the Greenteeth® is designed to fit securely into the chamfered end of each tooth holder.

These spacers must be installed as pictured in figure 2 with the chamfer facing downwards.

Tighten the lock nut that holds the tooth in the tooth holder securely to 27Nm.

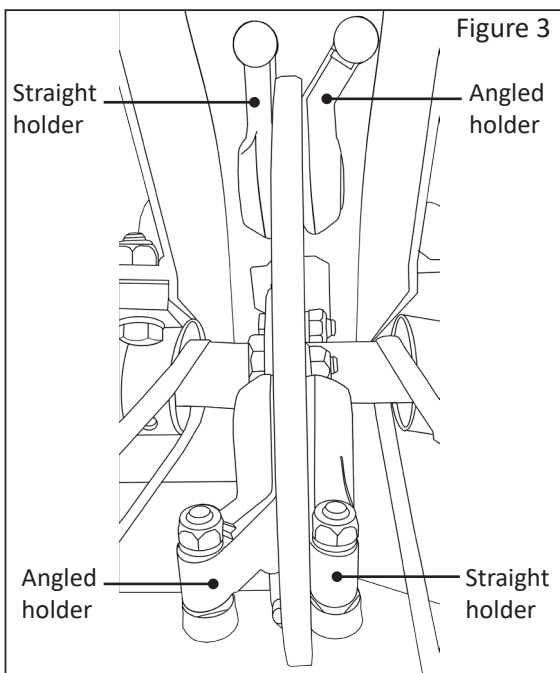


Figure 3

Rotating Teeth

Always ensure grinding teeth are sharp (figure 4a), if the edges become blunt (figure 4b), then the tooth can be rotated. Each tooth can be rotated up to three times.

To rotate a tooth, first loosen the lock nut then lift and rotate the tooth to the next indexed position, so the sharp edge is facing forwards.

Re-tighten the nut to 27Nm to secure the tooth tightly in position.

If you need any further assistance please contact our technical team by email technical@tracmaster.co.uk or phone 01444 247689.

