



---

# CRUSADER POWER SCYTHES & COMMANDER MOWERS

**PowerSafe®**

---







## WHY BCS?

---

### Passion

In 1942, in a tiny workshop in Abbiategrasso, Italy, young engineer Luigi Castoldi devised the first mechanical BCS machine, the model 243. This was one of the first self-propelled motor mowers to be manufactured anywhere in the world.

During the late 1960's BCS began manufacturing soil working implements and so the first BCS Two Wheel Tractor was born.

Today BCS is one of the world's largest manufacturers of pedestrian two wheel tractors and grass cutting machines. The BCS Group has three production plants in Italy spanning 300,000m<sup>2</sup>, subsidiary offices in 6 countries, and distributors in over 100 countries.

The company name comes from the initials of its original founder, Luigi Castoldi, and his two associates, Camillo Bonnetti and Severino Speroni.

### Innovation

In their state-of-the-art manufacturing facilities in Abbiategrasso, BCS produces every individual component for their machinery.

Precision manufacturing and accuracy to within 0.01mm during the production process, coupled with every machine being assembled and tested to the strictest standards, ensures optimum quality and performance.

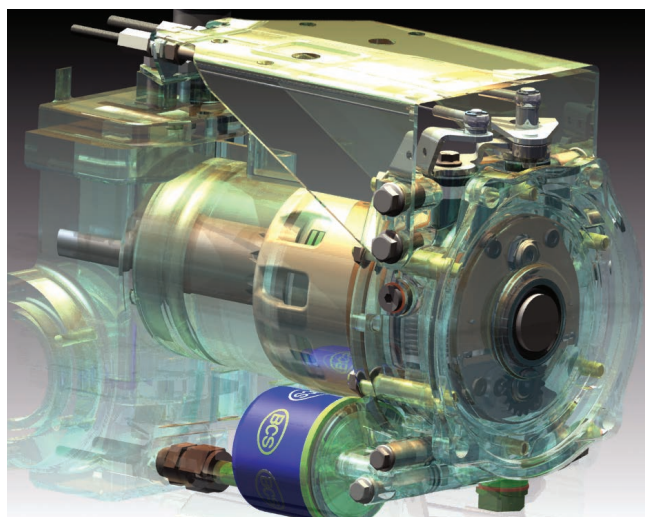
### Commitment

BCS continues to lead the way in new technology, notably with the introduction of their patented PowerSafe® clutch, a revolutionary design offering unbeatable performance and reliability, and supported by a 5-year warranty on each unit.

# RELIABLE

## PowerSafe®

The PowerSafe® clutch with multiple steel discs in oil bath and directly flanged to the engine, is patented and exclusive to the BCS Group. The clutch guarantees a number of benefits for the operator, and in addition ensures that BCS Crusader and Commander power units conform to the safety regulations EN 709/A4.



### SAFETY

Immediate machine and attachment shutdown if the handlebar is released. However, the engine continues to run.

Two stage system to prevent work from being resumed accidentally.



### RELIABILITY

Dependable hydraulic clutch.

Practically unlimited duration even if stressed with alternating movement attachments or with high inertia.



### PERFORMANCE

No overheating even if stressed for a long time.

No drop in performance at any operating temperature.



### COMFORT

Gentle and progressive engagement of the clutch lever, as well as minimal force required to keep the safety lever pressed.

Elimination of preliminary action for engine start-up.



### WARRANTY

Extended to 5 years on the entire PowerSafe® clutch unit.



# CRUSADER

## QUICK REVERSE LEVER

Located on the handlebars, this allows the operator to change direction quickly.

## ANTI-VIBRATION HANDLEBAR

This reduces vibration which increases operator comfort and safety.

## HIGH QUALITY ENGINES

BCS Crusader Power Scythes are powered by Honda petrol engines which are widely considered the most reliable and powerful in their class.

## THREE PIN POWER TAKE OFF

This strong and proven drive connection ensures added durability.

## QUICK COUPLING ASSEMBLY

This is available as an optional extra and enables implements to be changed in seconds and without tools.

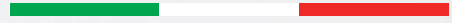


\*Shown pictured with Laser® scythe cutter bar attachment, for details of other implements available see page 28.



## SEVERAL FEATURES MAKE BCS POWERSAFE® CRUSADER POWER SCYTHES & COMMANDERS SUPERIOR

M A D E I N I T A L Y



### • SAFETY (OPC) LEVER

When this is released the machine and implement will stop instantly.

### • ADJUSTABLE HANDLEBARS

The height of the handlebars can be adjusted to suit each individual and maximise user comfort.

### • HANDLEBAR OFFSET

This simple method of moving the handlebars from side to side allows the operator to avoid obstacles.

### • ALL GEAR DRIVE SYSTEM

The all gear drive offers superior levels of reliability and durability, unlike chains and belts which often stretch and break.

### • DIFFERENTIAL WITH LOCK

On the BCS 618 and 630 the locking the differential increases traction in difficult terrain, whilst unlocking it allows on the spot turning.





# COMMANDER

## • QUICK REVERSE LEVER •

Located on the handlebars, this allows the operator to change direction quickly.

## • SAFETY (OPC) LEVER

When this is released the machine and implement will stop instantly.

## • ANTI-VIBRATION HANDLEBAR

This reduces vibration which increases operator comfort and safety.

## • HANDLEBAR OFFSET

This simple method of moving the handlebars from side to side allows the operator to avoid obstacles.

## • ADJUSTABLE HANDLEBARS

The height of the handlebars can be adjusted to suit each individual and maximise user comfort.

## • STEERING CLUTCHES

This patented system lets the operator manoeuvre the machine effortlessly. The clutch brakes give the 630WS excellent stability on slopes as well as for simple turns.

## THREE PIN PTO

This strong and proven drive connection ensures added durability.

## HIGH QUALITY ENGINE

The BCS 630WS is powered by the Honda banks engine which is widely considered the most reliable and powerful in its class.

## QUICK COUPLING ASSEMBLY

Available as an optional extra on the 630WS this enables implements to be changed in seconds and without tools.

## TWIN WHEEL OPTION

Available as an option, the twin wheels provide extra traction and stability especially on slopes.

## ALL GEAR DRIVE SYSTEM

The all gear drive offers superior levels of reliability and durability, unlike chains and belts which often stretch and break.







**ERGONOMIC CONTROLS**

The speed can be precisely controlled via the ergonomic handlebar-mounted control.

**SAFETY (OPC) LEVER**

When this is released the machine and implement will stop instantly.

**ANTI-VIBRATION HANDLEBAR**

This reduces vibration which increases operator comfort and safety.

**HANDLEBAR OFFSET**

This simple method of moving the handlebars from side to side allows the operator to avoid obstacles.

**ADJUSTABLE HANDLEBARS**

The height of the handlebars can be adjusted to suit each individual and maximise user comfort.

**STEERING BRAKES**

This patented system lets the operator manoeuvre the machine effortlessly. The brakes give the 660HY excellent stability on slopes as well as for simple turns.

**THREE PIN PTO**

This strong and proven drive connection ensures added durability.

**HIGH QUALITY ENGINES**

The BCS 660HY is powered by either a Honda banks engine, or a Briggs & Stratton petrol engine.

**QUICK COUPLING ASSEMBLY**

Included as standard on the 660HY and enables implements to be changed in seconds and without tools.

**HYDROSTATIC DRIVE**

The hydrostatic drive and steering clutches ensure complete control of the machine at all times.

**TWIN WHEEL OPTION**

Available as an option, the twin wheels provide extra traction and stability especially on slopes.

\*Shown as power units only, for details of implements available see page 28.



# RANGE

The versatility of the BCS Crusader Power Scythes and Commander Professional Mowers means that they can be used all year round.

Not only are the machines outstanding grass cutters, but they can also be used for sweeping and snow clearing tasks. The power units can operate a range of attachments enabling you to undertake a wide variety of different jobs, and their smaller size allows them to gain access to confined spaces and difficult to access areas.

They excel at wildflower and meadow management, whilst also being extremely effective as a snow clearing tool. The larger Commander Mowers fitted with the Honda banks engines can also be operated on steep slopes up to a 40° gradient.

These superb machines are now fitted with BCS's patented PowerSafe® clutch for unbeatable safety and performance.





**PowerSafe®**

# 614



**GEARBOX** 1 forward and 1 reverse speed.

**POWERSAFE® CLUTCH** with multiple discs in oil bath.

**INDEPENDENT POWER TAKE-OFF** with engagement in oil bath.

**HANDLEBAR** mounted on silent-blocks, adjustable in height and sideways.

**SAFETY DEVICES** complying with the applicable regulations.

### ATTACHMENTS AVAILABLE FOR 614

Laser® Scythe Cutter Bar, Hay Rake, Snow/Power Brush, Snow Blower, Snow Plough, Dozer Blade.

### SPEEDS IN KM/H WITH 4.00-8 WHEELS



Engine	Power hp / kW	Speeds	Wheels	Brakes	Weight	Dimensions (L x W x H)
Honda GP160 Petrol Recoil Start	4.8 / 3.6	1 Forward 1 Reverse	4.00 x 8 Agri	No	62kg	106 x 42 (59) x 99cm

PowerSafe®

615



**GEARBOX** 3 forward and 3 reverse speeds.

**QUICK REVERSER** to change the forwarding direction.

**POWERSAFE® CLUTCH** with multiple discs in oil bath.

**INDEPENDENT POWER TAKE-OFF** with engagement in oil bath.

**HANDLEBAR** mounted on silent-blocks, adjustable in height and sideways.

**SAFETY DEVICES** complying with the applicable regulations.

#### ATTACHMENTS AVAILABLE FOR 615

Laser® Scythe Cutter Bar, Rotary Mower, Hay Rake, Dozer Blade, Snow/Power Brush, Snow Blower, Snow Plough.

#### SPEEDS IN KM/H WITH 4.00-8 WHEELS



Engine	Power hp / kW	Speeds	Wheels	Brakes	Weight	Dimensions (L x W x H)
Honda GP160 Petrol Recoil Start	4.8 / 3.6	3 Forward 3 Reverse	4.00 x 8 Agri	No	62kg	104 x 42 (59) x 105cm
Honda GX200 Petrol Recoil Start	5.8 / 4.3				64kg	

Dimensions and weight are for power unit only without any attachments.



PowerSafe®

# 618



**GEARBOX** 3 forward and 3 reverse speeds.

**QUICK REVERSER** to change the forwarding direction.

**DIFFERENTIAL** with lock.

**POWERSAFE® CLUTCH** with multiple discs in oil bath.

**INDEPENDENT POWER TAKE-OFF** with engagement in oil bath.

**HANDLEBAR** mounted on silent-blocks, adjustable in height and sideways.

**SAFETY DEVICES** complying with the applicable regulations.

## ATTACHMENTS AVAILABLE FOR 618

Laser® Scythe Cutter Bar, Duplex Scythe Cutter Bar\*, Duplex Laser® Scythe Cutter Bar\*, Rotary Mower, Mulching Mower, Hay Rake, Buck Rake, Lawn Scarifier\*, Chipper Shredder, Stump Grinder, Leaf Blower, Dozer Blade, Wheel Barrow, Snow/Power Brush, Snow Blower, Snow Plough.

\*GX engine model only.

## SPEEDS IN KM/H WITH 4.00-10 WHEELS



Engine	Power hp / kW	Speeds	Wheels	Brakes	Differential	Weight	Dimensions (L x W x H)
Honda GP160 Petrol Recoil Start	4.8 / 3.6	3 Forward 3 Reverse	4.00 x 10 Agri	No	Locking Differential	85kg	104 x 48 (59) x 105cm
Honda GX270 Petrol Recoil Start	8.4 / 6.3					90kg	

Dimensions and weight are for power unit only without any attachments.

PowerSafe®

630



**GEARBOX** 3 forward and 3 reverse speeds.

**QUICK REVERSER** to change the forwarding direction.

**POWERSAFE® CLUTCH** with multiple discs in oil bath.

**INDEPENDENT POWER TAKE-OFF** with engagement in oil bath.

**STEERING CLUTCH / BRAKE ASSEMBLY** on the two wheels.

**PARKING BRAKE.**

**HANDLEBAR** mounted on silent-blocks, adjustable in height and sideways.

**SAFETY DEVICES** complying with the applicable regulations.

**ATTACHMENTS AVAILABLE FOR 630**

Laser® Scythe Cutter Bar, Duplex Scythe Cutter Bar, Duplex Laser® Scythe Cutter Bar, Rotary Mower, Mulching Mower, Flail Mower, Hay Rake, Buck Rake, Lawn Scarifier, Chipper Shredder, Stump Grinder, Leaf Blower, Dozer Blade, Wheel Barrow, Snow/Power Brush, Snow Blower, Snow Plough.

**SPEEDS IN KM/H WITH 5.00-10 WHEELS**



Engine	Power hp / kW	Speeds	Wheels	Brakes	Differential	Weight	Dimensions (L x W x H)
Honda GX270 Petrol Recoil Start	8.4 / 6.3	3 Forward 3 Reverse	5.00 x 10 Agri	Parking Brake and Steering Clutches	Locking Differential	95kg	125 x 57 (80) x 125cm
Honda GX270 Banks Petrol Recoil Start							

Dimensions and weight are for power unit only without any attachments.



PowerSafe®

# 630<sup>WS</sup>



**GEARBOX** 3 forward and 3 reverse speeds.

**QUICK REVERSER** to change the forwarding direction.

**DIFFERENTIAL** with lock.

**POWERSAFE® CLUTCH** with multiple discs in oil bath.

**REINFORCED, INDEPENDENT POWER TAKE-OFF** with engagement in oil bath.

**REDUCTION UNITS** on the wheels.

**STEERING CLUTCH/BRAKE ASSEMBLY** on the two wheels.

**PARKING BRAKE.**

**HANDLEBAR** mounted on silent-blocks, adjustable in height and sideways.

**SAFETY DEVICES** complying with the applicable regulations.

## ATTACHMENTS AVAILABLE FOR 630WS

Laser® Scythe Cutter Bar, Duplex Scythe Cutter Bar, Duplex Laser® Scythe Cutter Bar, Rotary Mower, Mulching Mower, Flail Mower, Hay Rake, Mini Baler, Buck Rake, Lawn Scarifier, Chipper Shredder, Leaf Blower, Dozer Blade, Wheel Barrow, Snow/Power Brush, Snow Plough.

## SPEEDS IN KM/H WITH 5.00-10 WHEELS



Engine	Power hp / kW	Speeds	Wheels	Brakes	Differential	Weight	Dimensions (L x W x H)
Honda GX390 Banks Petrol Recoil Start	11.7 / 8.7	3 Forward 3 Reverse	5.00 x 10 Agri	Parking Brake and Steering Clutches	Locking Differential	125kg	125 x 89 (80) x 102cm

Dimensions and weight are for power unit only without any attachments.

PowerSafe®

660<sup>HY</sup><sub>WS</sub>

**HYDROSTATIC TRANSMISSION** with 2-speed ranges (slow/fast) in both forward and reverse drive

**FORWARDING CONTROL** with the EasyGrip lever

**POWERSAFE® CLUTCH** with multiple discs in oil bath

**INDEPENDENT POWER TAKE-OFF** with engagement in oil bath

**STEERING CLUTCH/BRAKE ASSEMBLY** on the two wheels

**AUTOMATIC PARKING BRAKE** automatically holds the machine

**IMPLEMENT QUICK COUPLING** included as standard

**HANDLEBAR** mounted on silent-blocks, adjustable in height and sideways

**SAFETY DEVICES** complying with the applicable regulations







Engine	Power hp / kW	Speeds	Wheels	Brakes	Differential	Weight	Dimensions (L x W x H)
Honda GX390 Petrol Recoil Start	11.7 / 8.7	Fast Range and Slow Range	5.00 x 10 Agri	Auto Parking Brake & Steering Clutches	Locking Differential	181kg	140 x 90 (80) x 99cm
Briggs & Stratton Vanguard Petrol Recoil Start	16.0 / 11.9					196kg	

Dimensions and weight are for power unit only without any attachments.

### ATTACHMENTS AVAILABLE FOR 660HY WS

Laser® Scythe Cutter Bar, Duplex Scythe Cutter Bar, Duplex Laser® Scythe Cutter Bar, Rotary Mower, Mulching Mower, Flail Mower, Hay Rake, Mini Baler, Buck Rake, Lawn Scarifier, Chipper Shredder, Leaf Blower, Dozer Blade, Wheel Barrow, Snow/Power Brush, Snow Plough.

### SPEEDS IN KM/H WITH 5.00-10 WHEELS



The BCS 660HY WS Commander features a hydrostatic forward motion transmission that can be continuously adjusted with two speed ranges.

With one lever on the handlebar, the operator can continuously vary the speed and direction of the machine: this means an unlimited amount of gears are available for all operating requirements.

The lever control ensures high operation comfort especially during greens maintenance, snow removal and typical municipality use, which involves many direction changes.

The automatic parking brake (Auto-hold) locks the machine in position at the grip limit even with the engine switched off, while a manual release mechanism protected by a safety lock prevents accidental triggering.

The compact hydrostatic pump-engine unit is made of light alloy so that the machine can be easily manoeuvred and positioned on the gearbox.

Characterised by a high pressure circuit which is separate from the one of the PowerSafe® clutch, the machine is fitted with an axial-centrifugal fan to cool the hydrostatic unit.



# ATTACHMENTS

As a dependable working tool you will find that BCS PowerSafe® Crusader and Commander can be used for several different jobs in addition to classic grass cutting. The solid, compact and yet lightweight structure allows them to be easily manoeuvred on any type of terrain, even on steep slopes.

The wide range of professional top quality attachments makes the BCS PowerSafe® Crusader and Commander indispensable machines for all seasons.





## LASER® SCYTHER CUTTER BAR



### OVERVIEW

The Laser® Scythe Cutter Bar will cut dense vegetation of any height up to 25mm thick. Anti-clog serrated blades effortlessly cut through woody material such as brambles, as well as green vegetation. A single scissor-like cut at base of vegetation leaves the material in one piece making this the perfect tool for helping to create and maintain wildflower meadows.

### WORKING WIDTHS

80cm • 100cm • 115cm • 135cm • 155cm

### FEATURES

- Anti-clog serrated blades effortlessly cut vegetation up to 25mm diameter.
- Simple to adjust cutting height from 20mm to 80mm via skids on the cutter bar.
- Anti-wheel wrap cover to prevent vegetation wrapping around wheel axles.
- Long or short oil bath drive available - the long oil bath is recommended for diesel and larger petrol engine machines.



## DUPLEX SCYTHER CUTTER BAR



### OVERVIEW

Both the top and bottom sets of blades move from side to side helping to reduce vibration. This scythe can be used faster than the standard scythe making it perfect for larger areas. It is fantastic for grasses and meadow areas, but not as effective as the standard scythe at cutting woody material such as brambles.

### WORKING WIDTHS

120cm • 150cm

### FEATURES

- Anti-clog serrated blades effortlessly cut vegetation up to 25mm diameter.
- Excels at cutting tall grass and wildflowers.
- Top and bottom blades both move in opposite directions.
- Self-adjusting spring-loaded tensioners ensure constant pressure between both sets of blades.
- Produces less vibration than Laser® Scythe Cutter Bar.



## DUPLEX LASER® SCYTHER CUTTER BAR



### OVERVIEW

The Duplex Laser® Scythe Cutter Bar combines all the advantages of both the standard Laser® Scythe and the Duplex Scythe, to provide a scythe cutter bar with low vibration, and a faster cutting speed, that can be used for cutting and clearing all types of overgrown vegetation.

### WORKING WIDTH

130cm

### FEATURES

- Produces less vibration than Laser® Scythe Cutter Bar.
- Anti-clog serrated blades effortlessly cut vegetation up to 25mm diameter.
- Excels at cutting all types of overgrown vegetation.
- Top and bottom blades both move in opposite directions.
- Self-adjusting spring-loaded tensioners ensure constant pressure between both sets of blades.



## ROTARY MOWER 56CM



### OVERVIEW

The 56cm BCS Rotary Mower has both collection and side discharge options. Collection is extremely effective, even with wet grass, and the large collection bag is very easy to empty. The cutting height is adjusted in seconds with an easy to use lever.

### WORKING WIDTH

56cm

### FEATURES

- Single blade.
- Adjustable cutting height from 40mm to 70mm.
- 60L collection bag.
- Swivelling front castor wheels for easy manoeuvrability.
- Can be used as side ejection without collection, or with the easy-to-remove collection bag.
- Automatic blade brake.



## ROTARY MOWER 100CM



### OVERVIEW

The 100cm BCS Rotary Mower has both collection and side discharge options. Collection is extremely effective, even with wet grass, and the large collection bag is very easy to empty. The cutting height is adjusted in seconds with an easy to use lever.

### WORKING WIDTH

100cm

### FEATURES

- Twin swing tip blades.
- Adjustable cutting height from 60mm to 100mm.
- 160L collection bag.
- Swivelling front castor wheels for easy manoeuvrability.
- Can be used as side ejection without collection, or with the easy-to-remove collection bag.
- Automatic blade brake.



## MULCHING MOWER



### OVERVIEW

The BCS Mulching Mower is ideal for managing rough grass areas without the need for collecting. The free swinging disc mounted blade provides protection from hitting unseen objects. The cutting height is adjustable and so are the front castor wheels.

### WORKING WIDTH

80cm

### FEATURES

- Single heavy-duty blade.
- Adjustable cutting height via spacers on the blade.
- Mower can either run on front castor wheels or on skids on the side of the deck.
- Material is discharged onto the ground with a regular spread pattern.





## FLAIL MOWER



### OVERVIEW

The Berta Flail Mower will effortlessly cut the toughest vegetation without collecting. Overlapping blades and a high cutting speed provide a fantastic mulch and finish. The flail is very efficient and cuts vegetation faster than a mulching or rotary mower helping to make it our best selling grass cutter.

### WORKING WIDTHS

65cm • 85cm

### FEATURES

- Heavy duty free swinging blades fitted to a horizontal roller.
- Cutting height through 5 positions from 10mm to 60mm.
- Individually hinged front protection flaps prevent debris from being expelled forward.
- Full width rear roller helps to prevent unnecessary scalping of the ground.
- Wide open front ensures material reaches the blades.



## HAY RAKE



### OVERVIEW

The Hay Rake is fantastic for rowing-up meadow grass and wildflowers especially after using the Scythe. The spring tines sweep the cut grass into rows for easy collection or baling, and the unit pivots to follow the contours of the ground. It saves huge amounts of time over hand raking.

### WORKING WIDTHS

105cm • 125cm

### FEATURES

- Two options available - steering arm for use with Two Wheel Tractors, and castor wheels best suited for the Commander.
- Easily adjustable height settings.
- Adjustable catching arm to control the width of the windrow.
- Can also be used as a tedder to respread material.



## MINI BALER



### OVERVIEW

After rowing-up your cut grass with the Hay Rake, use the Baler to create mini round bales. Whether you need to remove the material from site or sell the grass as hay, this baler will do it. The unit will create easy to manage mini round bales from a variety of material from grasses to reeds.

### BALE SIZE

50cm x 58cm

### FEATURES

- Working pickup width of 70cm.
- Bale size of approximately 50cm x 58cm weighing roughly 22kg.
- Bales are bound with net wrap (included) which takes just a few seconds.
- Up to 80 bales, approximately 1,500kg, can be output per hour.
- Optional gathering wheels available which effectively widen the gathering width of the machine.



## BUCK RAKE



### OVERVIEW

The Buck Rake is designed to gather and transport hay, grass and other light materials. The working angle of the Buck Rake can be adjusted to suit the terrain and the material being collected. The Buck Rake makes moving large volumes of grass quick and easy, especially when used in conjunction with the Hay Rake.

### WORKING WIDTH

100cm

### FEATURES

- Adjustable working angle to suit terrain, material, and wheel size.
- Suitable for moving grass, hay etc up to 50kg.
- 8 heavy duty tines with hardened steel bullet-style tips.
- Working width of 100cm.



## LAWN SCARIFIER



### OVERVIEW

The Lawn Scarifier easily removes thatch encouraging grass to grow thicker and healthier, whilst also helping grass receive better access to water and oxygen so aiding in deeper root growth. The “waisted” blades provide unbeatable performance and maximum coverage with each pass.

### WORKING WIDTH

65cm

### FEATURES

- 48 free-swinging blades on three vertically rotating rods.
- Staggered blade layout provides maximum coverage.
- Swivel joint near the PTO connection has a floating feature to follow ground contours.
- Fast and precise height adjustment via the front roller.
- Spring rake and fixed blade cartridges also available.



## CHIPPER SHREDDER



### OVERVIEW

Turn branches and prunings into recyclable mulch. This unit has the benefit of separate infeed chutes - a chipping chute with a steel chipping blade for branches and woody material and a shredding chute with 28 swinging flails for brush and green waste.

### CAPACITY

Chipping: 7cm • Shredding: 1¼cm

### FEATURES

- Chipping diameter of 7cm and shredding capacity of 1¼cm.
- Adjustable legs for stabilising the chipper shredder during operation.
- Front castor wheels for easier manoeuvrability.
- Safety grille and rubber flap fitted to discharge area.
- High carbon steel chipping blade.





# STUMP GRINDER



## OVERVIEW

This extremely tough stump grinder is ideal for grinding stumps of any diameter. The grinding disc is fitted with 8 heavy-duty replaceable carbide cutting teeth and a removable transport wheel ensures easy manoeuvrability.

## WORKING HEIGHT

Above & Below Ground: 23cm

## FEATURES

- Fitted with 8 tungsten carbide teeth.
- Steel grinding disc is 25½cm in diameter and 12mm thick.
- Cast iron gearbox with fully hardened gears and shafts supported by ball bearings in a full oil bath.
- Can grind stumps up to 23cm above ground down to 23cm below ground.
- Removable transport wheel for easy manoeuvrability.



# BRUSH WITH OPTIONAL COLLECTOR



## OVERVIEW

This 100cm Power Brush is ideal for sweeping streets, courtyards, lawns, moss clearance, and snow. The brush is fitted with hard wearing polypropylene bristles which are mounted on rollers, and has the added advantage of having a large optional collector.

## WORKING WIDTH

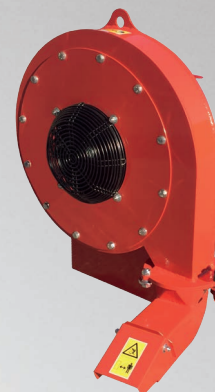
100cm

## FEATURES

- Optional collection bag.
- Swivel castor wheels for easy manoeuvrability.
- Brush can be angled to the left, right, or straight ahead.
- Floating head to follow the ground contours.
- Fitted with hard wearing polypropylene bristles.



# LEAF BLOWER



## OVERVIEW

This powerful self-propelled Leaf Blower is perfect for moving leaves and other light surface debris. The output chute is easily adjustable for both direction and distance and the “freewheel” feature ensures that when the power unit wheels are disengaged the pressure from the fan will not back-drive the power unit.

## AIR VOLUME

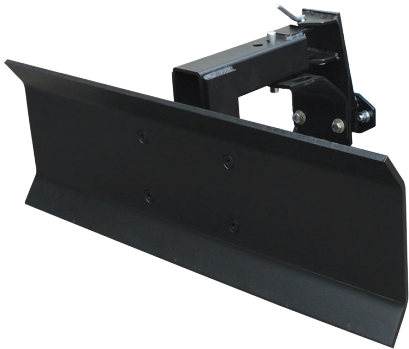
Up to 36m<sup>3</sup> per minute (1,300cfm)

## FEATURES

- The air output chute can rotate through 180° and at the end of the chute the flap can be adjusted up and down.
- Very strong construction with all steel housing and fan.
- Front swivel castor wheel for easy manoeuvrability.
- Delivers up to 36m<sup>3</sup> of air per minute.



## DOZER BLADE



### OVERVIEW

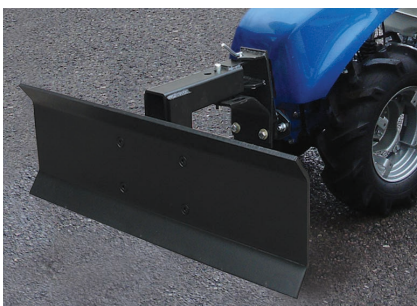
The Dozer Blade can be angled through 5 positions and is ideal for moving and dozing gravel, sand, earth, and other small debris, and for levelling ground. The inverted position allows the blade to push or pull material and the blade is fixed to prevent floating, so ensuring maximum levelling performance.

### WORKING WIDTH

100cm

### FEATURES

- The blade can be easily angled through 5 positions - left, right, or straight ahead.
- The blade is fixed to the mount to ensure maximum levelling performance.
- The inverted position of the blade enables it to push and pull material equally well.
- Wheel weights are recommended where additional traction is required.



## WHEEL BARROW



### OVERVIEW

This front tipping Wheel Barrow is manufactured from heavy duty poly and is ideal for transporting loads up to 125kg. Large front castor wheels enable easy manoeuvrability and a simple lever allows the barrow to be manually tipped.

### CARRYING CAPACITY

125kg

### FEATURES

- Body is made of rust resistant heavy-duty poly.
- Capable of transporting loads of up to 125kg.
- Simple tipping mechanism to unload barrow.
- Large front swivel castor wheels for easy manoeuvrability.
- Ideal for bulky items such as logs, compost, garden waste etc.



## POWER/SNOW BRUSH



### OVERVIEW

The BCS Power/Snow Brush is the ideal tool for many different sweeping applications including leaves, moss, mud and more from a large variety of surfaces from tennis courts to block paving. It also excels as a snow brush, easily clearing snow up to 10cm deep to leave a clear, safe surface.

### WORKING WIDTHS

80cm • 100cm

### FEATURES

- Easy to angle with three positions - left, right, or straight ahead.
- Bristles are made of hard-wearing polypropylene and are replaceable in sections.
- Rear castor wheels assist with manoeuvrability and are used to adjust the height of the brush.
- Brush will pivot to follow ground contours so can be used on uneven surfaces.





## SNOW BLOWER



### OVERVIEW

The Snow Blower has a rotating auger that breaks up snow up to 40cm deep and propels it up to 16m away. The discharge chute can be easily angled to control the direction and the distance is regulated via the adjustable top flap. It's the best tool for clearing snow on gravel driveways or paths.

### WORKING WIDTHS

60cm • 70cm

### FEATURES

- The auger rotates at 1200rpm to break up even compacted snow.
- Discharge chute is easy to angle and rotates through 180° to control direction of discharge.
- Adjustable flap on top of the discharge chute regulates the distance snow is discharged.
- Working height is easily adjusted up to 5cm via rear skids.



## SNOW PLOUGH



### OVERVIEW

The curved design of the snow plough means that snow up to 30cm deep is pushed up and rolled away creating a clear walkway. The plough can be angled to the left, right, or straight ahead and runs on saucer-shaped skids, or optional castor wheels, at the rear.

### WORKING WIDTH

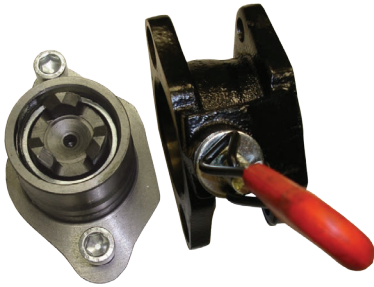
100cm

### FEATURES

- Curved blade helps to roll the snow up and off to either side.
- Easy to angle through 5 positions - left, right or straight ahead.
- Blade floats to follow contours of the ground.
- Height is easily adjustable via skids.
- Optional castor wheels available instead of skids.
- Optional polypropylene wear strip for use on delicate surfaces.

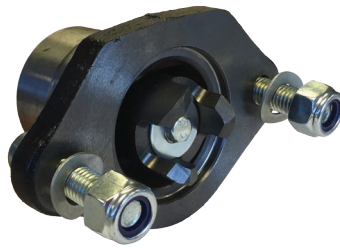


## IMPLEMENT QUICK COUPLING



The implement quick coupling assembly is an optional extra that enables implements to be changed quickly and without the need for any tools. This is very useful for when multiple implements are regularly used.

## ADDITIONAL COUPLING



When using the optional implement quick coupling assembly, an additional coupling would be required for all extra powered implements, eg rotavator or scythe.

## BLANK COUPLING



When using the optional implement quick coupling assembly, a blank coupling would be required for all extra non-powered implements, eg dozer blade or single plough.

## ADDITIONAL COUPLING (BCS 660HY)



Specifically for the BCS 660HY power unit only, this additional coupling is required for all extra powered implements, eg rotavator or scythe. A blank coupling is required for all non powered implements.

## IMPLEMENT EXTENSION



If extra distance is required between the power unit and the implement, the implement extension will add an additional 8cm (3") distance. It can help with balance and if larger wheels are fitted and extra distance is required.

## WHEEL SPACERS



Where additional stability may be required the wheel spacers can be bolted to the wheel hubs to push the wheels out by 6cm (2½") each side. Up to two pairs can be fitted on each wheel.

## WHEELS



Pneumatic or metal wheels with different profiles for various types of applications in agriculture, greens maintenance or haymaking.

**Steel Bank Wheel:** For use on sloping ground. The crosspieces penetrate the ground providing grip and preventing the wheels from slipping.

**Floatation Wheel:** For use on soft ground. The widened profile allows greater floatation and minimum soil compaction. Ideal for greens maintenance.

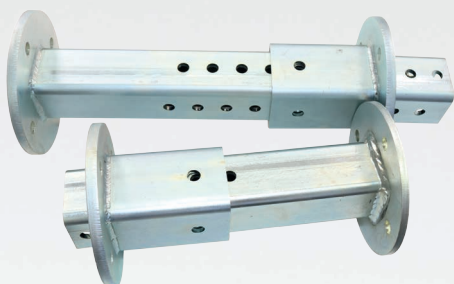
**Lug Wheel:** The clawed profile allows a good grip but with less soil compaction.

**Turf Wheel:** For greens maintenance on quality surfaces, the low compaction profile protects the lawn.

**Agricultural Wheel:** The clawed profile also allows a good grip on hard and soft grounds.



## ADJUSTABLE WHEEL SPACERS



These spacers are available in two sizes and simply bolt to the wheel hubs so the wheel width can be adjusted from 1cm to 15cm, or from 1cm to 25cm.

## TWIN WHEELS



The twin wheel kit includes an additional pair of wheels plus all the fixings required to double-up a pair of single wheels. They are ideal for providing extra stability and traction where the machine is being used on slopes.

## STEEL BANK WHEELS



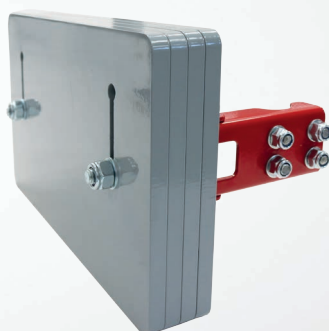
Steel wheels suitable for mowing on very steep slopes and in extreme conditions. The tread lugs penetrate the soil, considerably increasing both the traction and the side stability of the machine.

## WHEEL WEIGHTS



The weights are fixed to the wheel hubs to weigh down the machine and provide greater traction and enhanced performance and safety. They are very useful when ploughing and ridging and are available in 11kg and 15kg.

## ENGINE WEIGHT KIT



The weights fix to the engine protection and provide between 5kg and 15kg of additional weight. The weights are bolted together so can easily be added or removed as required.

## TRACTOR PTO COUPLER



The Tractor PTO Coupler converts the BCS PTO to a 6-spline allowing the power unit to operate certain low power, stationary implements. It is important to note that the the BCS power units run at 990rpm.

## PTO MULTIPLIER



The PTO Multiplier allows implements that require a faster rpm to be operated by the BCS power unit.

## OLD TO NEW COUPLERS



There are two types of coupler - the old machine to new implement coupler converts the spline shaft of an older power unit so it can operate the current implements with the 3-dog coupling, or the new machine to old implement coupler allows old implements to be used on new power units.

## IMPLEMENT WEIGHTS



Add this weight to implements to help balance them with the power unit/engine. Suitable for snow blower, dozer blade, snow plough and wheel barrow. For other implements please contact us.

# TECHNICAL FEATURES

	Engine	Fuel	Starter	Power hp/kW	Gearbox	Speeds FWD/REV	Km/hr FWD/REV
<b>614</b> PowerSafe®	Honda GP160	Petrol	Recoil	4.8 / 3.6	Mechanical, with gears and worm screw in oil bath.	1 + 1	F: 2.68 R: 1.05
<b>615</b> PowerSafe®	Honda GP160	Petrol	Recoil	4.8 / 3.6	Mechanical, with gears and worm screw in oil bath.	3 + 3	F: 1.05 2.43 3.58
	Honda GX200	Petrol	Recoil	5.8 / 4.3			R: 1.10 2.56 3.77
<b>618</b> PowerSafe®	Honda GP160	Petrol	Recoil	4.8 / 3.6	Mechanical, with gears and worm screw in oil bath.	3 + 3	F: 1.01 2.33 3.43
	Honda GX270	Petrol	Recoil	8.4 / 6.3			R: 1.06 2.94 3.61
<b>630</b> PowerSafe®	Honda GX270	Petrol	Recoil	8.4 / 6.3	Mechanical, with gears and worm screw in oil bath.	3 + 3	F: 1.26 2.92 4.30
	Honda GX270 Banks						R: 1.33 3.08 4.53
<b>630<sup>WS</sup></b> PowerSafe®	Honda GX390 Banks	Petrol	Recoil	11.7 / 8.7	Mechanical, with gears and worm screw in oil bath. Cast-iron reinforced gearbox.	3 + 3	F: 1.31 3.05 4.48 R: 1.38 3.21 4.72
<b>660<sup>HY</sup></b> PowerSafe®	Honda GX390 Banks	Petrol	Recoil or electric	11.7 / 8.7	Hydrostatic with final worm screw reduction in oil bath.	2-speed ranges (slow/fast) in both FWD and REV	F: Slow up to 4.7 Fast up to 7.0
	Briggs & Stratton Vanguard	Petrol	Recoil	16.0 / 11.9			R: Slow up to 4.3 Fast up to 6.3



Quick reverser	Clutch	Brakes	Differential	PTO	Handlebars	Wheels	Safety devices	Weight
Yes, with mechanical control on the handlebar.	PowerSafe® hydraulic with manual control.	No.	No.	Independent from gearbox. At 990 rpm with engagement in oil bath.	Mounted on silent-blocks, adjustable in height and sideways.	4.00 x 8	In compliance with regulation EN 12733.	62kg
Yes, with mechanical control on the handlebar.	PowerSafe® hydraulic with manual control.	No.	No.	Independent from gearbox. At 990 rpm with engagement in oil bath.	Mounted on silent-blocks, adjustable in height and sideways.	4.00 x 8	In compliance with regulation EN 12733.	62kg
								64kg
Yes, with mechanical control on the handlebar.	PowerSafe® hydraulic with manual control.	No.	With lock.	Independent from gearbox. At 990 rpm with engagement in oil bath.	Mounted on silent-blocks, adjustable in height and sideways.	4.00 x 10	In compliance with regulation EN 12733.	85kg
								90kg
Yes, with mechanical control on the handlebar.	PowerSafe® hydraulic with manual control.	Independent work brake on the two wheels and parking brake.	With lock.	Independent from gearbox. At 990rpm with engagement in oil bath.	Mounted on silent-blocks, adjustable in height and sideways.	5.00 x 10	In compliance with regulation EN 12733.	95kg
Yes, with mechanical control on the handlebar.	PowerSafe® hydraulic with manual control.	Steering clutch/ brake assembly on the two wheels and parking brake.	Steering clutches combined with brakes.	Independent from gearbox. At 990rpm with engagement in oil bath.	Mounted on silent-blocks, adjustable in height and sideways.	5.00 x 10	In compliance with regulation EN 12733.	125kg
Yes, by hydrostatic unit.	PowerSafe® hydraulic with manual control.	Hydraulically controlled steering clutches in oil bath combined with brakes.	Hydraulically controlled steering clutches in oil bath combined with brakes.	Independent from gearbox. At 990rpm with engagement in oil bath.	Mounted on silent-blocks, adjustable in height and sideways.	5.00 x 10	In compliance with regulation EN 12733.	181kg
								196kg

# COMPATIBILITY TABLE

IMPLEMENT	DETAILS	614	615GP	615GX	618GP	618GX	630	630WS	660HY
LASER® SCYTHE CUTTER BAR	80cm (32")	●	●	●	●				
	100cm (40")	●	●	●	●	●	●		
	115cm (45")			●	●	●	●	●	●
	135cm (53")					●	●	●	●
	155cm (61")							●	●
DUPLEX SCYTHE CUTTER BAR	120cm (47")							●	●
	150cm (59")							●	●
DUPLEX LASER® SCYTHE CUTTER BAR	130cm (51")							●	●
ROTARY MOWER	56cm (22")		●	●	●	●			
	100cm (40")						●	●	●
MULCHING MOWER	80cm (32")						●	●	●
FLAIL MOWER	65cm (25")						●		
	85cm (33")							●	●
HAY RAKE	100cm (40")	●	●	●	●	●	●		
	120cm (47")					●	●	●	●
MINI BALER								●	●
BUCK RAKE	100cm (40")					●	●	●	●
LAWN SCARIFIER	65cm (25")						●	●	●
CHIPPER SHREDDER	7cm (2¾")					●	●	●	●
STUMP GRINDER						●	●		
POWER/SNOW BRUSH	80cm (32")	●	●	●	●	●	●		
	100cm (40")					●	●	●	●
POWER BRUSH WITH COLLECTOR	100cm (40")						●	●	●
LEAF BLOWER						●	●	●	●
DOZER BLADE	100cm (40")	●	●	●	●	●	●	●	●
WHEEL BARROW	125kg Capacity				●	●	●	●	●
SNOW BLOWER	60cm (24")	●	●	●	●	●	●		
	70cm (28")					●	●		
SNOW PLOUGH	100cm (40")	●	●	●	●	●	●	●	●











## OUR SERVICES



### SPARE PARTS

Normally available from stock, we carry a complete range of original spare parts for all our machines.



### TECHNICAL SUPPORT

Our technical team are available during office hours to provide a telephone support service to keep you running.



### WARRANTY

Our warranty periods reflect the build quality of our machines; namely 3 years for domestic and 2 years for commercial use.



### NATIONWIDE SUPPORT

We have a nationwide network of authorised dealers who offer both pre- and post-sales support and services.



M A D E I N I T A L Y



The information indicated in this brochure is not binding. The models described may be modified, without notice, by the manufacturer. The drawings and photos may refer to equipment that is optional. Spare parts and machine availability is subject to stock. Engine power figures are maximum net output at 3600rpm. Actual engine performances may be affected by accessories (intake and exhaust line, charging, cooling fan, etc.), application, ambient operating conditions (temperature, humidity, and altitude) and other factors.

25/08/22

## Tracmaster Ltd

Units 6-7 Winterpick Business Park | Hurstpierpoint Road | Wineham | Henfield | BN5 9BJ  
Tel. +44 (0)1444 247689  
E: info@tracmaster.co.uk

[www.tracmaster.co.uk](http://www.tracmaster.co.uk)

