

Antarctica A-Z


Montessori Geography Unit

An Aurora is a natural light display in the sky. It occurs in the polar regions.


The Aurora Australis occurs over Antarctica. It is sometimes called Southern Lights.




Non-Living




Mount Erebus



Animal



King Penguin



Bob is




Jon stands near flags.




his pals.

Antarctica



A-Z

Trillium



head

They bear holes head Different penguins the mo he d

Penguins see their eyesight and They have a membrane covers their eye protect

Eye

see on land and un have water They have a membrane covers their eye protect



Non-Fiction Book

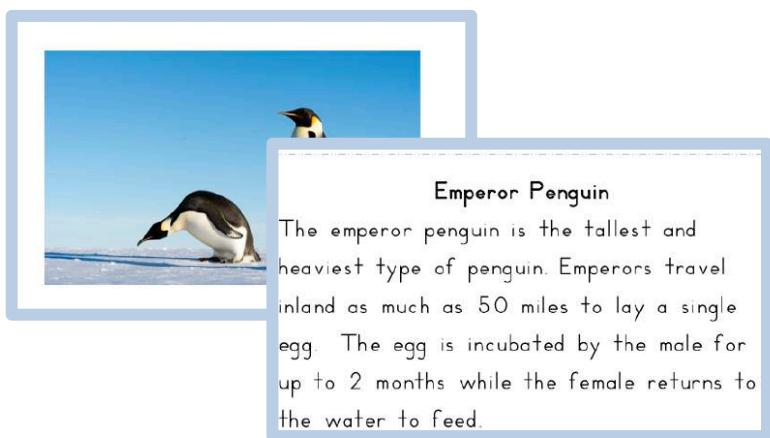
Each letter of the alphabet is represented by a photograph of an item found on this continent along with a brief description. You may want to bind these cards into a book or keep them separate and introduce them one at a time.



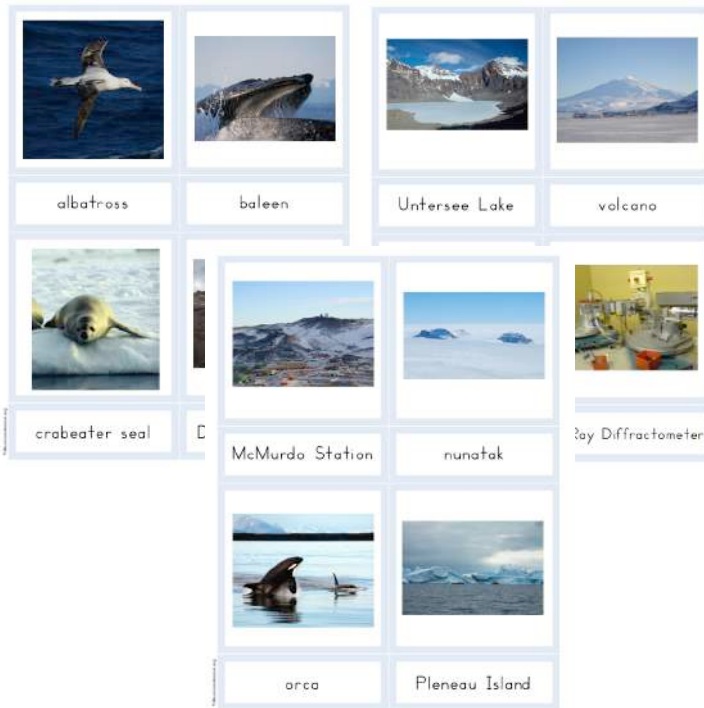
Terms in the book include:

- | | |
|-----------------|------------------|
| Albatross | McMurdo |
| Baleen | Station |
| Crabeater Seals | Nunatak |
| Deception | Orca |
| Island | Pleneau Island |
| Emperor | Queen Maud |
| Penguin | Land |
| Full-Track | Rookery |
| Glacier | South Pole |
| Hope Bay | Transportation |
| Instruments | Untersee Lake |
| James Ross | Volcano |
| Krill | Weddell Seal |
| Leopard Seal | X-Ray |
| | Diffractionmeter |

You may prefer to print two pages on one sheet of paper and cut apart to make picture and description matching cards. Consult your printer manual for instructions on how to print multiple pages on one sheet. These cards do not have a border. Mount on colored paper if you would like to have a border.



A-Z Matching Cards



Print two sets to make matching cards.

Cut the labels off one of the sets to make 3-part cards.

Put in alphabetical order or match to letter cards (not included). The photos used are from the A-Z non-fiction book.

Black and white pages are not included for children to color their own book.

Phonetic Reading Sentences



Cut the cards apart. Students can read the sentence strip and find the correct picture. Add a color coding dot on the back as a control of error if desired.

A set with blue borders is also provided to coordinate with your pink-blue-green reading series.

Sorting Living and Non-Living



Compare living and non-living things. Sort the cards into two rows or columns

Sorting Plants and Animals



Compare plants and animals. Sort the cards into two rows or columns.

Parts of a Penguin

head

The penguin's head has the eyes, the ears, and the beak. The ears are small holes on the sides of the head and cannot be seen. Different species of penguins can be identified by the markings on their head.

belly

bell

tail

eye

Head

The penguin's head has the eyes, the ears, and the beak. The ears are small holes on the sides of the head and cannot be seen. Different species of penguins can be identified by the markings on their head.

Eye

Penguins use their eyes to see on land and under water. They have sharp eyesight under water. They have a membrane that covers their eyes to protect from injury.

Learn the various parts of a penguin using these 3-part cards. Students can make their own booklet using the blackline provided.

Physical Features of Antarctica

ice-shelf

An ice shelf is a thick sheet of ice that floats on the ocean. The Ross ice shelf is the largest ice shelf in Antarctica. It is about the size of France or hundreds of feet thick.

Aurora Australis

An Aurora is a natural light display in the sky. It occurs in the polar regions. The Aurora Australis occurs over Antarctica. It is sometimes called the Southern Lights.

volcano

Mount Erebus is the second highest volcano in Antarctica. It is famous because it is active and contains a lava lake. It is located near Mc Murdo Station and the South Pole.

glacier

iceberg

South Pole

These scientists are standing at the sign that marks the location of the South Pole. In 1911, Roald Amundsen and his team were the first people to reach the South Pole.

Use these 3-part cards to talk about the different types of climates found on this continent.

Use as a jumping off point to discuss the ways people might work in the different biomes.