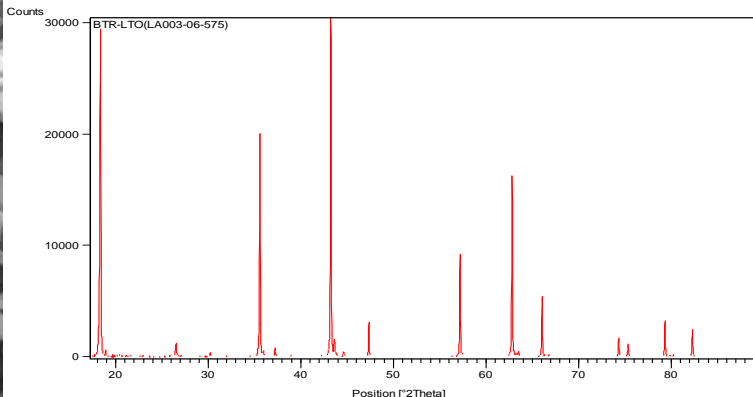
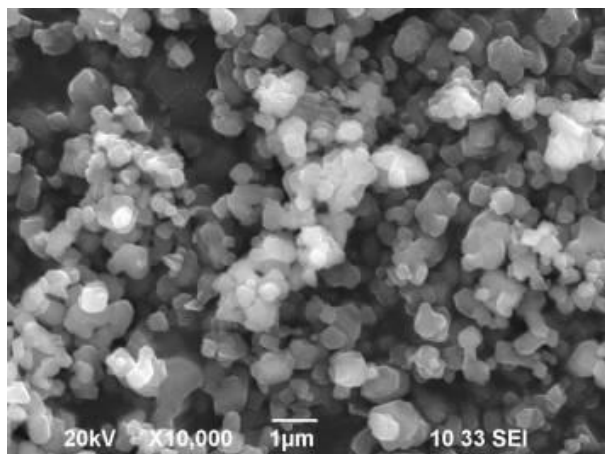




Product Data Sheet
Lithium Titanate - LTO - Power -Anode

Part No: EMLTOP



Form	Powder
Color	White
D50	<1um
Tap Density	>0.9g/cm ²
Iron Content	≤50ppm
Structure	Spinel
Surface area - BET	2-6 m ² /g
Chemical Formula	Li ₄ Ti ₅ O ₁₂
Voltage	1.50V Vs Li
pH	≤11.5
Capacity	160mAh/g at C/20
First Cycle efficiency	>90%
Application	High Power, battery, Anode
Molecular Weight	459.099
EC Number	12031-82-2

www.electrodesandmore.com

4020 Christopher Way, Plano TX 75024
 Phone: (877)394-3941 Fax: (208)955-4890
drmumu@electrodesandmore.com

