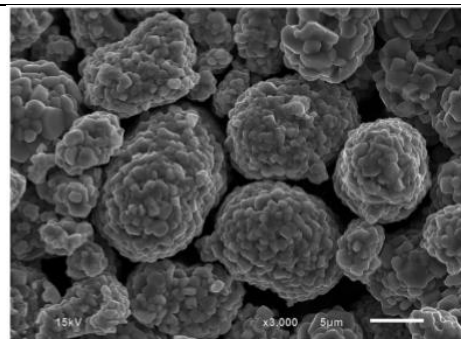
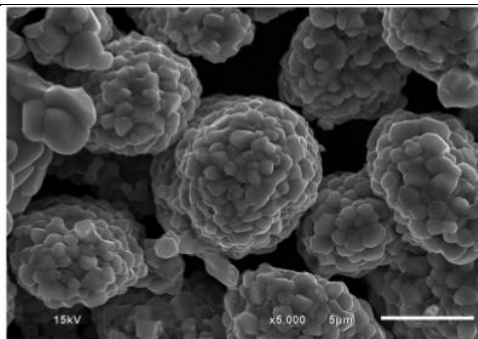
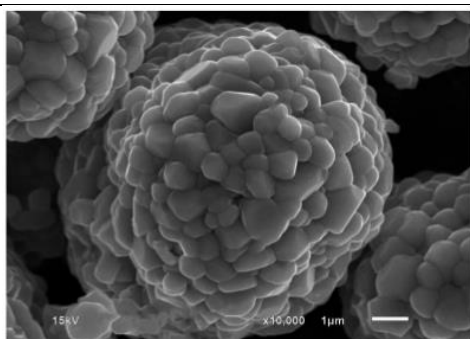




Product Data Sheet

**Lithium Nickel Manganese Cobalt Oxide (NMC 5:3:2)- Energy**

Part No: LNCM532



<b>Form</b>	Powder
<b>Color</b>	Black
<b>D10</b>	=>4.00 μm Typical 6.46 μm
<b>D50</b>	9-13 μm Typical 11.02 μm
<b>D90</b>	<= 25.00 Typical 18.30 μm
<b>Tap Density</b>	>2.40g/cm <sup>2</sup>
<b>(Ni+Co+Mn)%</b>	59 +/- 2.00 Typical 59.24
<b>Li%</b>	7.10 +/- 2.00 Typical 6.97
<b>Fe%</b>	<=0.0050 Typical 0.0025
<b>Cu%</b>	<=0.0050 Typical 0.0005
<b>Na%</b>	<= 0.0200 Typical 0.0069
<b>Ca%</b>	<=0.0200 Typical 0.0068
<b>Compact Density</b>	=>3.30 g/cm <sup>3</sup>
<b>Surface area - BET</b>	0.15-0.35 m <sup>2</sup> /g Typical 0.22 m <sup>2</sup> /g
<b>Chemical Formula</b>	LiNi <sub>0.5</sub> Co <sub>0.2</sub> Mn <sub>0.3</sub> O <sub>2</sub>
<b>pH</b>	<=11.70 Typical 11.40
<b>Capacity</b>	155 mAh/g at 1C
<b>Application</b>	High Energy, battery, cathode
<b>EC Number</b>	NA

[www.electrodesandmore.com](http://www.electrodesandmore.com)

4020 Christopher Way, Plano TX 75024

Phone: (877)394-3941 Fax: (208)955-4890



Product Data Sheet

# Lithium Nickel Manganese Cobalt Oxide (NMC 5:3:2)- Energy

[drmumu@electrodesandmore.com](mailto:drmumu@electrodesandmore.com)

