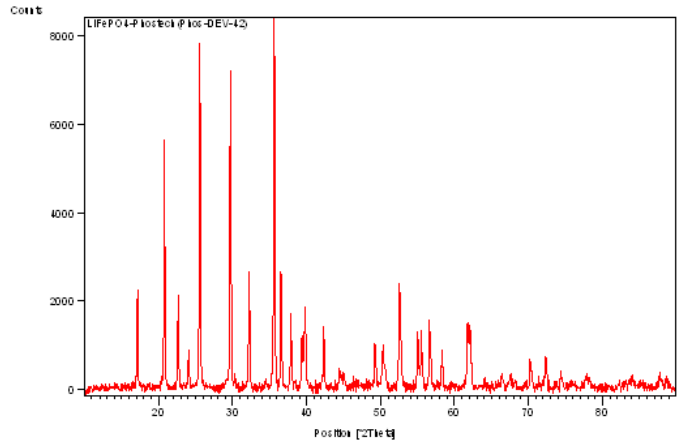
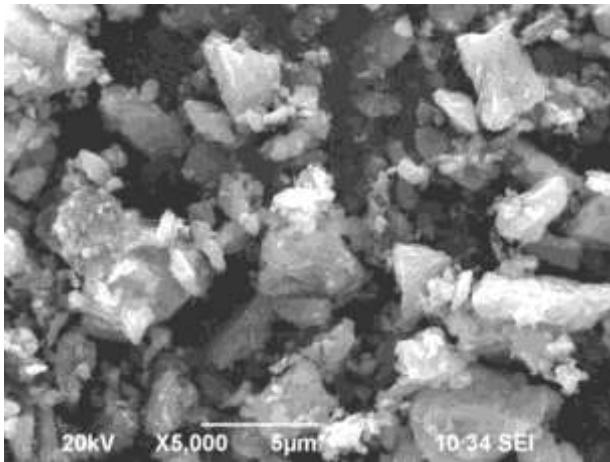




## Product Data Sheet Lithium Iron Phosphate (LFP) – Energy & Power

Part No: EMLFEP-P

Rev. 1.0, Dated: April 3, 2013



<b>Form</b>	Powder
<b>Color</b>	Black
<b>D50</b>	3–7 µm
<b>Tap Density</b>	>0.8g/cm <sup>2</sup>
<b>Iron Content</b>	< 20 ppm
<b>Structure</b>	Olive
<b>Surface area - BET</b>	<15 m <sup>2</sup> /g
<b>Chemical Formula</b>	LiFePO <sub>4</sub>
<b>Voltage</b>	3.20V
<b>pH</b>	10.2
<b>Capacity</b>	125mAh/g at C/20
<b>First Cycle efficiency</b>	>85%
<b>Application</b>	High Energy, high power, battery, cathode
<b>Molecular Weight</b>	157.79
<b>EC Number</b>	15365-14-7

[www.electrodesandmore.com](http://www.electrodesandmore.com)

Battery Consulting, 4020 Christopher Way, Plano TX 75024

Phone: (877)394-3941 Fax: (208)955-4890

[drmumu@electrodesandmore.com](mailto:drmumu@electrodesandmore.com)

