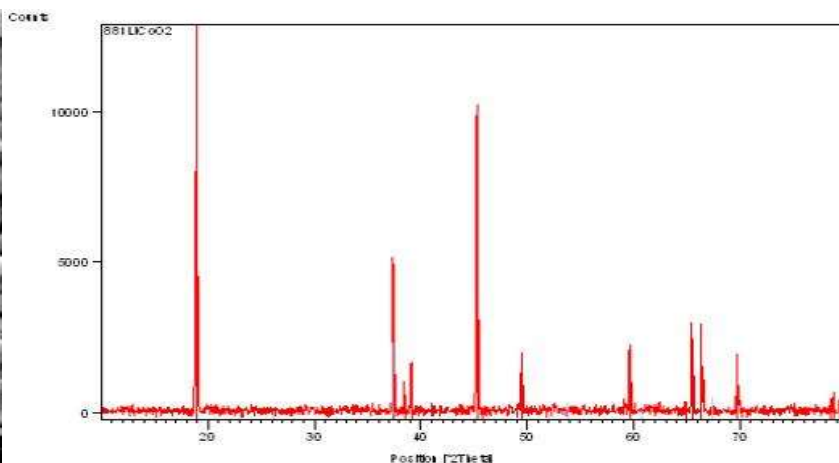
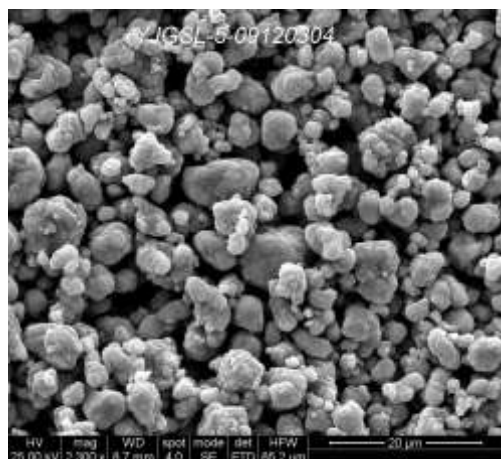


**Product Data Sheet  
Lithium Cobalt Oxide - Power**

Part No: EMLCOP-P



<b>Form</b>	Powder
<b>Color</b>	Black
<b>D50</b>	4 – 8 µm
<b>Tap Density</b>	>2.2g/cm <sup>2</sup>
<b>Iron Content</b>	< 20 ppm
<b>Structure</b>	Layer
<b>Surface area - BET</b>	0.4 to 0.7 m <sup>2</sup> /g
<b>Chemical Formula</b>	LiCoO <sub>2</sub>
<b>Voltage</b>	3.7 V
<b>pH</b>	10.6
<b>Capacity</b>	140mAh/g at C/20
<b>First Cycle efficiency</b>	>88%
<b>Application</b>	High Power, battery, cathode
<b>Molecular Weight</b>	98.87
<b>EC Number</b>	235-362-0

[www.electrodesandmore.com](http://www.electrodesandmore.com)

Battery Consulting, 4020 Christopher Way, Plano TX 75024

Phone: (877)394-3941 Fax: (208)955-4890

[drmumu@electrodesandmore.com](mailto:drmumu@electrodesandmore.com)