

SMC SHUTTLE CABLE XTREME REBUILD PACK AND SERVICE KIT



To maintain peak performance the bearing assemblies on the Shuttle Xtreme can be replaced by the user in just 4 steps with the new Cable Xtreme Service Kit or Rebuild Pack. The Xtreme Service Kit (SKU SM156309) comes with all the necessary parts and tools needed to rebuild a single unit. The Xtreme Rebuild Pack (SKU SM156308) comes with all the parts needed to rebuild up to 10 pulleys (tools not included).

SMC Xtreme Service Kit **SM156309**

Key Features:

QTY 2 - Axle • QTY 2 - Axle Spacer • QTY 2 - Snap Ring • QTY 2 - Ball Bearing Assemblies • QTY 4 - Lock Washer • QTY 4 - Button Screw • Tools: Hex Wrench • Snap Ring Pliers • Xtreme Wrench

SMC Xtreme Rebuild Pack **SM156308**

Key Features:

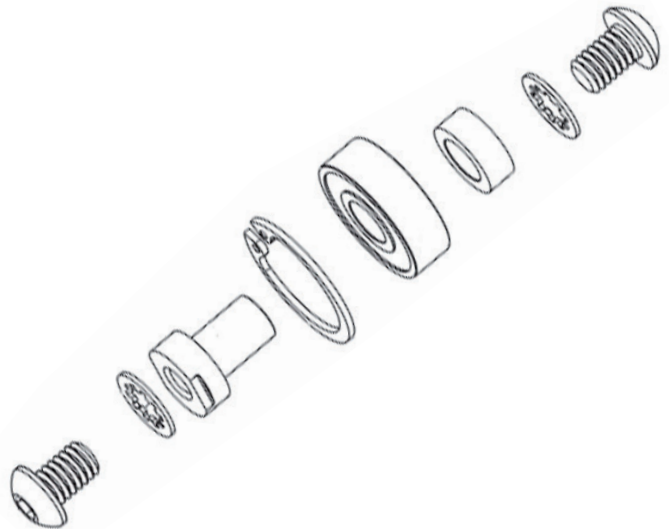
QTY 20 - Axle • QTY 20 - Axle Spacer • QTY 20 - Snap Ring • QTY 20 - Ball Bearing Assemblies • QTY 40 - Lock Washer • QTY 40 - Button Screw • Tools NOT included



BERRY COMPLIANT



Tools not included in Xtreme Rebuild Pack



A large, empty rectangular box with a thin black border, intended for handwritten notes or technical drawings.

Pigeon Mountain Industries, Inc. | PO Box 803, LaFayette, GA 30278 | Fax: 706-764-1531 | Email: custserv@pmirope.com