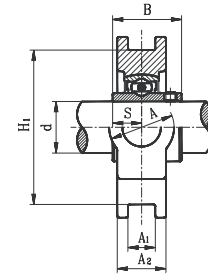
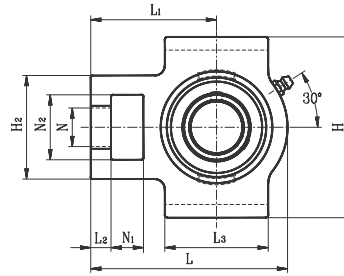


# TAKE UP UNITS

## UCST STANDARD DUTY SET SCREW LOCKING TYPE - WIDE SLOT



- Cast iron housing - wide slot
- Wide inner ring bearing

Unit No.	Shaft Dia. d (in.) (mm)		Dimensions (in) (mm)														Bearing No.	Housing No.	Weight (lb)		
			N1	L2	H2	N2	N	L3	A1	H1	H	L	A	A2	L1	B				S	
UCST201	12																		UC201		
201-8	1/2																		201-8		
202	15																		202		
202-10	5/8	5/8	13/32	2	1-1/4	3/4	2	17/32	3	3-1/2	3-23/32	1-1/4	27/32	2-13/32	1-7/32	1/2		202-10	ST204	1.80	
203	17	16	10	51	32	19	51	13.5	76	89	94	32	21	61	31.0	12.7	203				
203-11	11/16																	203-11			
204-12	3/4																	204-12			
204	20																	204			
UCST205-14	7/8																		UC205-14		
205-15	15/16	5/8	13/32	2	1-1/4	3/4	2	17/32	3	3-1/2	3-13/16	1-1/4	15/16	2-7/16	1-11/32	9/16		205-15	ST205	1.90	
205	25	16	10	51	32	19	51	13.5	76	89	97	32	24	62	34.0	14.3	205				
205-16	1																	205-16			
UCST206-18	1-1/8																		UC206-18		
206	30	5/8	13/32	2-7/32	1-15/32	7/8	2-1/4	17/32	3-1/2	4-1/32	4-7/16	1-15/32	1-3/32	2-3/4	1-1/2	5/8		206	ST206	2.90	
206-19	1-3/16	16	10	56	37	22	57	13.5	89	102	113	37	28	70	38.1	15.9	206-19				
206-20	1-1/4																	206-20			
UCST207-20	1-1/4																		UC207-20		
207-21	1-5/16	5/8	1/2	2-17/32	1-15/32	7/8	2-17/32	17/32	3-1/2	4-1/32	5-3/32	1-15/32	1-3/16	3-1/16	1-11/16	11/16		207-21	ST207	3.70	
207-22	1-3/8	16	13	64	37	22	64	13.5	89	102	129	37	30	78	42.9	17.5	207-22				
207	35																	207			
207-23	1-7/16																	207-23			
UCST208-24	1-1/2																		UC208-24		
208-25	1-9/16	3/4	5/8	3-9/32	1-15/16	1-5/32	3-1/4	11/16	4-1/32	4-1/2	5-11/16	1-15/16	1-5/16	3-15/32	1-15/16	3/4		208-25	ST208	5.50	
208	40	19	16	83	49	29	83	17.5	102	114	144	49	33	88	49.2	19.0	208				
UCST209-26	1-5/8																		UC209-26		
209-27	1-11/16	3/4	5/8	3-9/32	1-15/16	1-5/32	3-1/4	11/16	4-1/32	4-5/8	5-11/16	1-15/16	1-3/8	3-7/16	1-15/16	3/4		209-27	ST209	5.50	
209-28	1-3/4	19	16	83	49	29	83	17.5	102	117	144	49	35	87	49.2	19.0	209-28				
209	45																	209			
UCST210-30	1-7/8																		UC210-30		
210-31	1-15/16	3/4	5/8	3-9/32	1-15/16	1-5/32	3-3/8	11/16	4-1/32	4-5/8	5-7/8	1-15/16	1-15/32	3-9/16	2-1/32	3/4		210-31	ST210	5.70	
210	50	19	16	83	49	29	86	17.5	102	117	149	49	37	90	51.6	19.0	210				
UCST211-32	2																		UC211-32		
211-34	2-1/8	1	3/4	4-1/32	2-17/32	1-3/8	3-3/4	1-1/16	5-1/8	5-3/4	6-23/32	2-17/32	1-1/2	4-3/16	2-3/16	7/8		211-34	ST211	8.80	
211	55	25	19	102	64	35	95	27	130	146	171	64	38	106	55.6	22.2	211				
211-35	2-3/16																	211-35			
UCST212-36	2-1/4																		UC212-36		
212	60	1-1/4	3/4	4-1/32	2-17/32	1-3/8	4-1/32	1-1/16	5-1/8	5-3/4	7-21/32	2-17/32	1-21/32	4-11/16	2-9/16	1		212	ST212	10.80	
212-38	2-3/8	32	19	102	64	35	102	27	130	146	194	64	42	119	65.1	25.4	212-38				
212-39	2-7/16																	212-39			

\* Dual seal standard. Triple lip seal (R3 suffix) optional.

