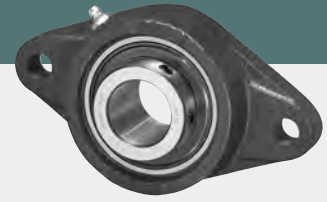


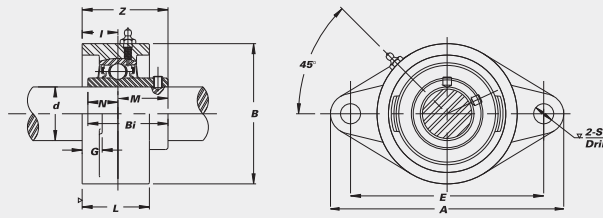
2-Bolt Flange Units



UCFLX

Medium duty with set screw lock.

- Wide inner race with greater load carrying capacity than standard duty
- B-type seals
- Cast iron housing
- B-type seals
- L3-type seals available in some sizes

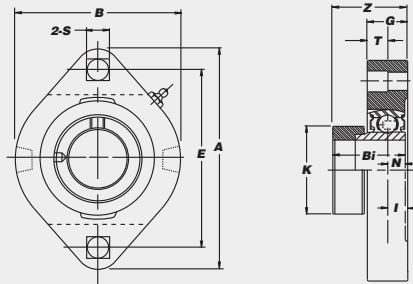


Unit No.	Shaft Dia.		Dimensions (in.)											Bolt Used	Bearing No.	Housing No.	Weight (lbs.)
	d	(in.) (mm)	A	E	I	G	L	S	B	Z	Bi	N	M				
UCFL X05-14	7/8	25	148	116.7	18	13	31	11.9	80	40.5	1.5000	0.6260	0.8740	3/8	UCX05-14	FL 206	2.4
X05-15	15/16																
X05																	
X05-16	1																
UCFL X06-18	1 1/8	30	161	130.2	19	14	34	13	90	44.5	1.6890	0.6890	1.0000	7/16	UCX06-18	FL 207	3.3
X06	6 11/32																
X06-19	1 3/16																
X06-20	1 1/4																
UCFL X07-22	1 3/8	35	175	143.7	21	14	36	13	100	50.8	1.9370	0.7480	1.1890	7/16	UCX07-22	FL 208	4.2
X07	6 7/8																
UCFL X07-23	1 7/16																
UCFL X08-24	1 1/2	40	188	148.4	22	15	38	15	108	52.4	1.9370	0.7480	1.1890	1/2	UCX08-24	FL 209	4.6
X08	7 13/32																
UCFL X09-27	1 11/16	45	197	157	22	15	40	16	115	54.8	2.0315	0.7480	1.2835	1/2	UCX09-27	FL 210	5.3
X09-28	7 3/4																
X09	1 3/4																
UCFL X10-30	1 7/8	50	224	184	25	18	43	16.3	130	58.7	2.1890	0.8740	1.3150	9/16	UCX10-30	FL 211	8.4
X10-31	1 15/16																
X10	8 13/16																
X10-32	2																
UCFL X11	2	55	250	201.6	29	18	48	16.3	140	69.1	2.5630	1.0000	1.5630	9/16	UCX11	FL 212	9.9
X11-35	2 3/16																
X11-36	2 1/4																



SAMS

- Cast iron housing
- K-type seals
- Narrow inner race bearing
- Metric sizes available



Unit No.	Shaft Dia.		Dimensions (in.)											Bolt Used	Bearing No.	Housing No.	Weight (lbs.)
	d	(in.) (mm)	A	E	I	G	T	S	B	Z	Bi	N	K				
SAMS 201-8G	1/2	81	63.5	7.4	14.7	7.1	7.1	58.7	30.0	28.6	6.0	29	1/4	SA 201-8G	MS 203G	0.7	
202-10G	5/8																
SAMS 204-12G	3/4	90.5	71.5	8.6	17.1	8.7	8.7	66.7	32.1	31.0	7.5	33	5/16	SA 204-12G	MS 204G	0.9	
SAMS 205-14G	7/8																
205-16G	1	95	76.2	9.5	17.5	8.7	8.7	71	33.0	31.0	7.5	38	5/16	SA 205-14G	MS 205G	1.1	
205-16G	1																
SAMS 206-18G	1 1/8	113	90.5	10.3	20.6	10.3	10.3	84.1	37.0	35.7	9.0	45	3/8	SA 206-18G	MS 206G	1.8	
206-19G	1 3/16																
206-20G	1 1/4																
SAMS 207-20G	1 1/4	125.4	100.0	11.1	22.2	11.1	10.3	93.7	40.5	38.9	9.5	60	3/8	SA 207-20G	MS 207G	2.3	
207-22G	1 3/8																
207-23G	1 7/16																
207-23G	1 7/16																

STANDARD PRODUCTS