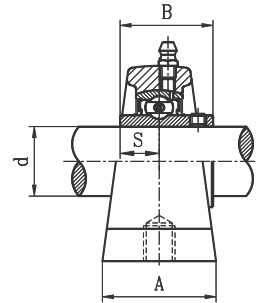
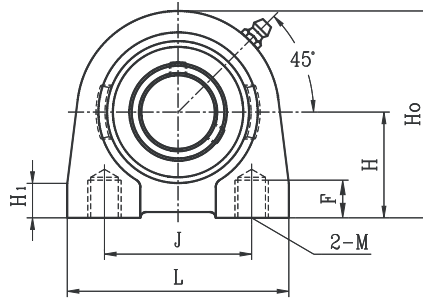


TAPPED BASE PILLOW BLOCKS

UCPA A STANDARD DUTY SET SCREW LOCKING TYPE



- Follows USA/domestic dimensions.
- Cast iron housing.
- Wide inner ring bearing

Unit No.	Shaft Dia. d		Dimension (in) (mm)									Bearing No.	Housing No.	Weight (lb)				
	(in.)	(mm)	H	L	J	A	Ho	H1	S	B	F				M			
UCPA201A 201-8A 202A	1/2	12																
202-10A 203A 203-11A 204-12A 204A	5/8 11/16 3/4	15 17 20	1-5/16 33.3	2-7/8 73	2 50.8	1-1/2 38	2-9/16 65	15/32 12	1/2 12.7	1-7/32 31	1/2 13	3/8-16UNC	UC201 201-8 202 202-10 203 203-11 204-12 204	PA204A	1.39			
UCPA205-14A 205-15A 205A 205-16A	7/8 15/16 1	25	1-7/16 36.5	3 76.2	2 50.8	1-1/2 38	2-13/16 71.4	15/32 12	9/16 14.3	1-11/32 34	1/2 13	3/8-16UNC	UC205-14 205-15 205 205-16	PA205A	1.76			
UCPA206-18A 206A 206-19A 206-20A	1-1/8 1-3/16 1-1/4	30	1-11/16 42.9	4 101.6	3 76.2	1-1/2 38	3-3/8 85.7	19/32 15	5/8 15.9	1-1/2 38.1	5/8 16	7/16-14UNC	UC206-18 206 206-19 206-20	PA206A	2.64			
UCPA207-20A 207-21A 207-22A 207A 207-23A	1-1/4 1-5/16 1-3/8 1-7/16	35	1-7/8 47.6	4-1/4 108	3-1/4 82.5	1-7/8 47.6	3-3/4 95.2	5/8 16	11/16 17.5	1-11/16 42.9	3/4 19	1/2-13UNC	UC207-20 207-21 207-22 207 207-23	PA207A	3.74			
UCPA208-24A 208-25A 208A	1-1/2 1-9/16 40	40	1-15/16 49.2	4-5/8 117.5	3-1/2 88.9	1-7/8 47.6	3-15/16 100	5/8 16	3/4 19	1-15/16 49.2	3/4 19	1/2-13UNC	UC208-24 208-25 208	PA208A	4.4			
UCPA209-26A 209-27A 209-28A 209A	1-5/8 1-11/16 1-3/4 45	45	2-1/8 53.98	5 127	3-3/4 95.25	2 50.8	4-1/4 108	23/32 18	3/4 19	1-15/16 49.2	3/4 19	1/2-13UNC	UC209-26 209-27 209-28 209	PA209A	4.84			
UCPA210-30A 210-31A 210A 210-32A	1-7/8 1-15/16 2	50	2-1/4 57.15	5-1/2 139.7	4 101.6	2 50.8	4-5/8 117.5	23/32 18	3/4 19	2-1/32 51.6	31/32 25	5/8-11UNC	UC210-30 210-31 210 210-32	PA210A	6.16			

* Dual seal standard. Triple lip seal (R3 suffix) optional.

