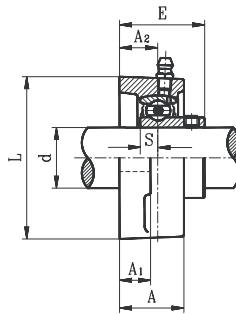
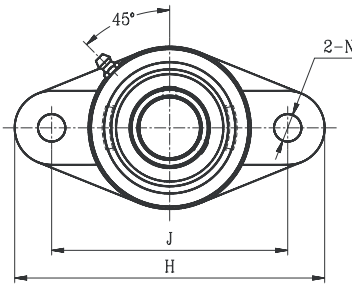


# TWO BOLT FLANGE UNITS

## SBFL LIGHT DUTY SET SCREW LOCKING TYPE



- Cast iron housing
- Narrow inner ring bearing

FLANGES

Unit No.	Shaft Dia. d		Dimension (in) (mm)									Bolt Size (in)	Bearing No.	Housing No.	Weight (lb)
	(in.)	(mm)	H	J	L	A <sub>2</sub>	A <sub>1</sub>	A	E	N	S				
<b>SBFL201G</b> 201-8G 202G 202-10G 203G 203-11G	1/2 5/8 11/16	12 15 17	3-29/32 99	3-1/32 76.5	2-1/4 57	19/32 15	7/16 11	31/32 24.5	1-1/4 31	15/32 11.5	1/4 6.0	3/8	SB201G 201-8G 202G 202-10G 203G 203-11G	FL203	0.83
<b>SBFL204-12G</b> 204G	3/4	20	4-15/32 113	3-9/16 90	2-3/8 60	19/32 15	7/16 11	1 25.5	1-5/16 33	15/32 11.5	9/32 7.0	3/8	SB204-12G 204G	FL204	0.86 0.82
<b>SBFL205-14G</b> 205-15G 205G 205-16G	7/8 15/16 1 1	25	5-1/8 130	3-29/32 99	2-11/16 68	5/8 16	17/32 13	1-1/16 27	1-13/32 35.5	15/32 11.5	5/16 7.5	3/8	SB205-14G 205-15G 205G 205-16G	FL205	1.28 1.28 1.26 1.23
<b>SBFL206-18G</b> 206G 206-19G 206-20G	1-1/8 1-3/16 1-1/4	30	5-27/32 148	4-5/8 117	3-5/32 80	23/32 18	17/32 13	1-1/4 31	1-19/32 40	15/32 11.5	5/16 8.0	3/8	SB206-18G 206G 206-19G 206-20G	FL206	1.85 1.88 1.81 1.79
<b>SBFL207-20G</b> 207-21G 207-22G 207G 207-23G	1-1/4 1-5/16 1-3/8 1-7/16	35	6-11/32 161	5-1/8 130	3-9/16 90	3/4 19	9/16 14	1-11/32 34	1-11/16 42.5	9/16 14.0	11/32 8.5	1/2	SB207-20G 207-21G 207-22G 207G 207-23G	FL207	2.99 2.97 2.33 2.27 2.24
<b>SBFL208-24G</b> 208-25G 208G	1-1/2 1-9/16 40	40	6-29/32 175	5-11/16 144	3-15/16 100	27/32 21	9/16 14	1-7/16 36	1-13/16 46	9/16 14.0	3/8 9.0	1/2	SB208-24G 208-25G 208G	FL208	3.08 3.04 2.86
<b>SBFL209-26G</b> 209-27G 209-28G 209G	1-5/8 1-11/16 1-3/4 45	45	7-13/32 188	5-27/32 148	4-1/4 108	7/8 22	5/8 16	1-1/2 38	2-3/32 53	23/32 18.0	13/32 10.2	5/8	SB209-26G 209-27G 209-28G 209G	FL209	4.33
<b>SBFL210-30G</b> 210-31G 210G 210-32G	1-7/8 1-15/16 50 2	50	7-3/4 197	6-3/16 157	4-17/32 115	7/8 22	5/8 16	1-19/32 40	2-5/32 54.6	23/32 18.0	7/16 10.9	5/8	SB210-30G 210-31G 210G 210-32G	FL210	4.80
<b>SBFL211-32G</b> 211-34G 211G 211-35G	2 2-1/8 55 2-3/16	55	8-13/16 224	7-1/4 184	5-1/8 130	1 25	23/32 18	1-11/16 43	2-5/16 58.5	23/32 18.0	15/32 11.8	5/8	SB211-32G 211-34G 211G 211-35G	FL211	6.69
<b>SBFL212-36G</b> 212G 212-38G 212-39G	2-1/4 2-3/8 2-7/16	60	9-27/32 250	7-31/32 202	5-17/32 140	1-5/32 29	23/32 18	1-29/32 48	2-21/32 67.8	23/32 18.0	19/32 14.9	5/8	SB212-36G 212G 212-38G 212-39G	FL212	8.27

