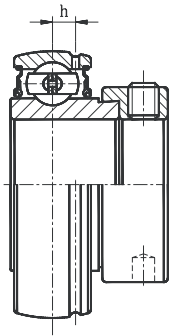
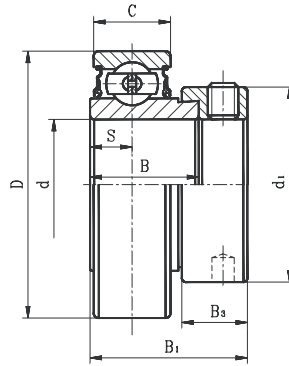


BALL BEARING INSERTS

SA LIGHT DUTY ECCENTRIC LOCKING COLLAR TYPE
CSA LIGHT DUTY CYLINDRICAL O.D. TYPE



SA
(WITH G SUFFIX)



CSA



- Narrow inner ring bearing
- Lubrication groove with hole on collar side and additional oil hole on opposite side (G suffix).

Bearing No.	Shaft Dia. d		Dimension (in) (mm)								Basic load rating (lbs)		Weight (lb)								
	(in.)	(mm)	D	C	B	B ₁	S	h	B ₃	d ₁	Dynamic	Static									
SA201G	1/2	12	1.5748	0.4724	0.7520	1.1260	0.2559	0.1417	0.5315	1.1260	2150	1070	0.31								
201-8G		15												40	12	19.10	28.60	6.5	3.6	13.5	28.6
202G		17																			
202-10G		5/8																			
203G	11/16	17											0.29								
203-11G													0.29								
CSA104-12	3/4		1.6535	0.4724	0.6354	1.0402	0.2362		0.5197	1.2992	2100	1120	0.26								
			42	12	16.14	26.42	6.0		13.2	33.0											
SA204-12G	3/4		1.8504	0.5512	0.8425	1.2165	0.2953	0.1575	0.5315	1.3110	2900	1500	0.40								
204G	20		47	14	21.40	30.90	7.5	4.0	13.5	33.3			0.43								
SA205-14G	7/8		2.0472	0.5906	0.8425	1.2165	0.2953	0.1693	0.5315	1.5000	3150	1770	0.46								
205-15G	15/16		52	15	21.40	30.90	7.5	4.3	13.5	38.1			0.42								
205G	25												0.40								
205-16G	1												0.40								
SA206-18G	1-1/8		2.4409	0.6299	0.9370	1.4055	0.3543	0.1969	0.6260	1.7520	4400	2500	0.77								
206G	30		62	16	23.80	35.70	9.0	5.0	15.9	44.5			0.73								
206-19G	1-3/16												0.68								
206-20G	1-1/4												0.68								
SA207-20G	1-1/4		2.8346	0.6693	1.0000	1.5315	0.3740	0.2244	0.6890	2.1890	5800	3400	1.23								
207-21G	1-5/16		72	17	25.40	38.90	9.5	5.7	17.5	55.6			1.17								
207-22G	1-3/8												1.12								
207G	35												1.10								
207-23G	1-7/16												1.06								
SA208-24G	1-1/2		3.1496	0.7087	1.1890	1.7205	0.4331	0.2441	0.7205	2.3740	6660	4100	1.50								
208-25G	1-9/16		80	18	30.20	43.70	11.0	6.2	18.3	60.3			1.48								
208G	40												1.43								
SA209-26G	1-5/8		3.3465	0.7480	1.1890	1.7205	0.4331	0.2559	0.7205	2.5000	7160	4700	1.68								
209-27G	1-11/16		85	19	30.20	43.70	11.0	6.5	18.3	63.5			1.61								
209-28G	1-3/4												1.52								
209G	45												1.52								
SA210-30G	1-7/8		3.5433	0.7874	1.1890	1.7205	0.4331	0.2559	0.7205	2.7520	7900	5200	1.83								
210-31G	1-15/16		90	20	30.20	43.70	11.0	6.5	18.3	69.9			1.74								
210G	50												1.74								
SA211-32G	2		3.9370	0.9449	1.2756	1.9055	0.4724	0.2835	0.8150	3.0000	9800	6600	2.57								
211-34G	2-1/8		100	24	32.50	48.40	12.0	7.2	20.7	76.2			2.35								
211G	55												2.29								
211-35G	2-3/16												2.22								
SA212-36G	2-1/4		4.3307	0.9449	1.3150	1.9409	0.4724	0.3150	0.8780	3.3150	10700	7400	2.86								
212G	60		110	24	33.40	49.30	12.0	8.0	22.3	84.2			2.64								
212-38G	2-3/8												2.40								
212-39G	2-7/16												2.40								



USA
Bearings & Belts
"We get things moving!"