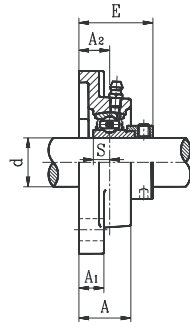
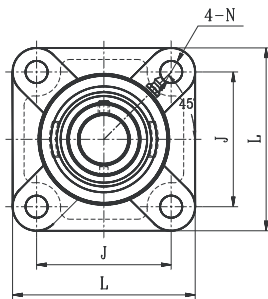


# FOUR BOLT FLANGE UNITS

## SAF LIGHT DUTY ECCENTRIC LOCKING COLLAR TYPE



- Cast iron housing
- Narrow inner ring bearing

FLANGES

Unit No.	Shaft Dia. d		Dimension (in) (mm)								Bolt Size (in)	Bearing No.	Housing No.	Weight (lb)		
	(in.)	(mm)	L	J	A <sub>2</sub>	A <sub>1</sub>	A	E	N	S						
SAF201G		12														0.95
201-8G	1/2	15	3	2-1/8	19/32	7/16	1	1-15/32	7/16	1/4	3/8	SA201G			0.95	
202G	5/8	17	76	54	15	11	24.5	37.1	11.5	6.5		201-8G	F203		0.92	
202-10G												202-10G			0.92	
203G												203G			0.92	
203-11G	11/16											203-11G			0.92	
SAF204-12G	3/4	20	3-3/8	2-17/32	19/32	7/16	1	1-1/2	7/16	9/32	3/8	SA204-12G			1.21	
204G			86	64	15	11	25.5	38.4	11.5	7.5		204G	F204		1.28	
SAF205-14G	7/8		3-3/4	2-3/4	5/8	1/2	1-1/16	1-9/16	7/16	9/32	3/8	SA205-14G			1.63	
205-15G	15/16	25	95	70	16	13	27.0	39.6	11.5	7.5		205-15G	F205		1.61	
205G												205G			1.56	
205-16G	1											205-16G			1.54	
SAF206-18G	1-1/8	30	4-1/4	3-9/32	23/32	1/2	1-7/32	1-3/4	7/16	11/32	3/8	SA206-18G			2.38	
206G												206G	F206		2.33	
206-19G	1-3/16		108	83	18	13	31.0	44.7	11.5	9.0		206-19G			2.29	
206-20G	1-1/4											206-20G			2.22	
SAF207-20G	1-1/4	35	4-19/32	3-5/8	3/4	19/32	1-11/32	1-29/32	9/16	3/4	1/2	SA207-20G			3.21	
207-21G	1-5/16		117	92	19	15	34.0	48.4	14.0	18.8		207-21G	F207		3.15	
207-22G	1-3/8											207-22G			3.10	
207G												207G			3.08	
207-23G	1-7/16											207-23G			3.04	
SAF208-24G	1-1/2	40	5-1/8	4-1/32	13/16	19/32	1-13/32	2-1/8	9/16	7/16	1/2	SA208-24G			3.96	
208-25G	1-9/16		130	102	21	15	36.0	53.7	14.0	11.0		208-25G	F208		3.94	
208G												208G			3.89	
SAF209-26G	1-5/8	45	5-13/32	4-1/8	7/8	5/8	1-1/2	2-5/32	5/8	7/16	9/16	SA209-26G			4.84	
209-27G	1-11/16		137	105	22	16	38.0	54.7	16.0	11.0		209-27G	F209		4.71	
209-28G	1-3/4											209-28G			4.64	
209G												209G			4.55	
SAF210-30G	1-7/8	50	5-5/8	4-3/8	7/8	5/8	1-9/16	2-5/32	23/32	7/16	5/8	SA210-30G			5.39	
210-31G	1-15/16		143	111	22	16	40.0	54.7	18.0	11.0		210-31G	F210		5.35	
210G												210G			5.28	
SAF211-32G	2	55	6-3/8	5-1/8	1	23/32	1-11/16	2-13/32	23/32	15/32	5/8	SA211-32G			6.99	
211-34G	2-1/8		162	130	25	18	43.0	61.4	18.0	12.0		211-34G	F211		6.51	
211G												211G			6.31	
211-35G	2-3/16											211-35G			6.18	
SAF212-36G	2-1/4	60	6-7/8	5-5/8	1-5/32	23/32	1-29/32	2-5/8	23/32	15/32	5/8	SA212-36G			8.73	
212G			175	143	29	18	48.0	66.3	18.0	12.0		212G	F212		8.51	
212-38G	2-3/8											212-38G			8.36	
212-39G	2-7/16											212-39G			8.27	

\* Full cover metal shroud seal standard. Full contact rubber seal (2RS suffix) optional.  
Non-relubricatable units also available (remove G suffix). Contact factory.

