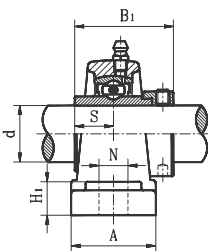
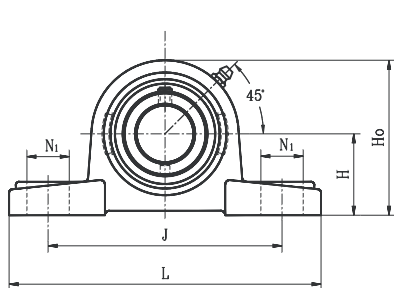


PILLOW BLOCKS

HCP STANDARD DUTY ECCENTRIC LOCKING COLLAR TYPE



- Cast iron housing - solid base.
- Wide inner ring bearing

PILLOW BLOCKS

Unit No.	Shaft Dia. d		Dimension (in) (mm)									Bolt Size (in)	Bearing No.	Housing No.	Weight (lb)	
	(in.)	(mm)	H	L	J	A	N	N ₁	H ₁	H ₀	S					B ₁
HCP201S 201-8 202S 202-10S 203S 203-11S	1/2 5/8 11/16	12 15 17	1-3/16 30.2	4-15/16 125	3-5/8 92	1-1/4 32	15/32 12	5/8 16	1/2 13	2-1/4 57	9/16 13.9	1-15/32 37.3	3/8	HC201S 201-8 202S 202-10S 203S 203-11S	P203S	1.5
HCP201 201-8 202 202-10 203 203-11	1/2 5/8 11/16	12 15 17	1-3/16 30.2	5 127	3-3/4 96	1-15/32 37	1/2 13	3/4 19	9/16 14	2-13/32 60.7	11/16 17	1-23/32 43.5	3.8	HC201 201-8 202 202-10 203 203-11	P203	1.58
HCP204-12 204	3/4 20	20	1-5/16 33.35	5 127	3-3/4 96	1-15/32 37	1/2 13	5/8 16	9/16 14	2-1/2 63.8	11/16 17	1-25/32 43.5	3/8	HC204-12 204	P204	1.59
HCP205-14 205-15 205 205-16	7/8 15/16 1	25	1-7/16 36.5	5-1/2 140	4-1/8 105	1-1/2 38	1/2 13	3/4 19	19/32 15	2-3/4 69.5	11/16 17.4	1-3/4 44.3	3/8	HC205-14 205-15 205 205-16	P205	1.76
HCP206-18 206 206-19 206-20	1-1/8 1-3/16 1-1/4	30	1-11/16 42.9	6-5/16 160	4-3/4 121	1-25/32 44	9/16 14	3/4 19	5/8 16	3-7/32 82	5/8 18.2	1-29/32 48.3	1/2	HC206-18 206 206-19 206-20	P206	2.97
HCP207-20 207-21 207-22 207 207-23	1-1/4 1-5/16 1-3/8 1-7/16	35	1-7/8 47.6	6-9/16 167	4-31/32 126	1-7/8 48	19/32 15	3/4 19	21/32 17	3-5/8 92	3/4 18.8	2 51.1	1/2	HC207-20 207-21 207-22 207 207-23	P207	3.74
HCP208-24 208-25 208	1-1/2 1-9/16 40	40	1-15/16 49.2	7-3/32 180	5-3/8 136	2-1/8 54	19/32 15	13/16 21	23/32 18	3-27/32 98	27/32 21.4	2-7/32 56.3	1/2	HC208-24 208-25 208	P208	5.60
HCP209-26 209-27 209-28 209	1-5/8 1-11/16 1-3/4 45	45	2-1/8 54	7-7/16 189	5-3/4 146	2-1/8 54	19/32 15	13/16 21	25/32 20	4-5/32 105.5	27/32 21.4	2-7/32 56.3	1/2	HC209-26 209-27 209-28 209	P209	5.34
HCP210-30 210-31 210	1-7/8 1-15/16 50	50	2-1/4 57.2	8-1/32 204	6-1/4 159	2-1/4 57	3/4 19	7/8 22	13/16 21	4-13/32 112.2	31/32 24.6	2-15/32 62.7	5/8	HC210-30 210-31 210	P210	6.05
HCP211-32 211-34 211 211-35	2 2-1/8 55 2-3/16	55	2-1/2 63.5	8-17/32 217	6-25/32 172	2-3/8 60	3/4 19	7/8 22	7/8 22	4-29/32 124.5	1-3/32 27.7	2-13/16 71.3	5/8	HC211-32 211-34 211 211-35	P211	7.83
HCP212-36 212 212-38 212-39	2-1/4 2-3/8 2-7/16	60	2-3/4 69.9	9-3/8 238	7-5/16 186	2-19/32 66	3/4 19	1 25	15/16 24	5-13/32 137	1-7/32 30.9	3-1/16 77.7	5/8	HC212-36 212 212-38 212-39	P212	11.5
HCP213-40 213	2-1/2 65	65	3 76.2	10-5/16 262	8 203	2-3/4 70	29/32 23	1-5/32 29	1-1/32 26	5-7/8 149	1-11/32 34.1	3-3/8 85.7	3/4	HC213-40 213	P213	13.9
HCP214-44 214	2-3/4 70	70	3-1/8 79.4	10-15/32 266	8-9/32 210	2-27/32 72	29/32 23	1-5/32 29	1-1/16 27	6-3/32 155	1-11/32 34.1	3-3/8 85.7	3/4	HC214-44 214	P214	15.43
HCP215 215-48	3 75	75	3-1/4 82.6	10-25/32 274	8-17/32 217	2-29/32 74	1 25	1-5/32 29	1-3/32 28	6-3/8 161.6	1-15/32 37.3	3-5/8 92.1	3/4	HC215 215-48	P215	17.19
HCP216	80	80	3-1/2 88.9	11-1/2 292	9-1/8 232	3-1/16 78	1 25	1-3/16 30	1-3/16 30	6-27/32 174	1-15/32 37.3	3-3/4 95.2	3/4	HC216	P216	18.29
HCP217-52 217	3-1/4 85	85	3-3/4 95.2	12-7/32 310	9-23/32 247	3-9/32 83	1 25	1-3/16 30	1-1/4 32	7-5/16 186	15/16 23.4	2-7/8 73.2	3/4	HC217-52 217	P217	24.5
HCP218-56 218	3-1/2 90	90	4 101.6	12-27/32 326	10-5/16 262	3-15/32 88	1-1/16 27	1-3/16 30	1-5/16 33	7-25/32 198	31/32 24.5	2-27/32 72.5	7/8	HC218-56 218	P218	29.0

