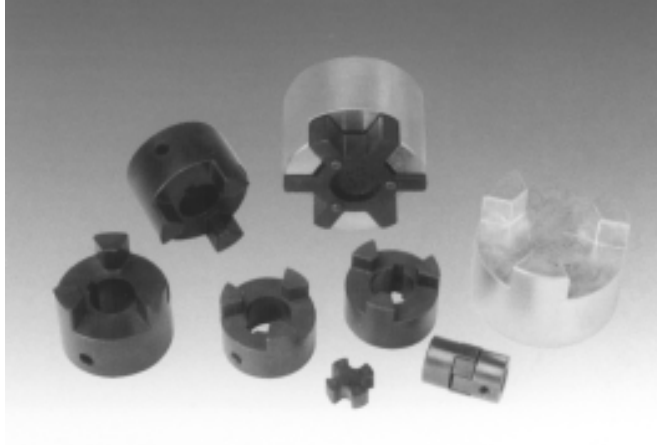




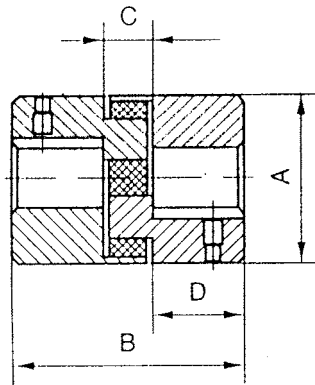
COUPLING

Jaw- Coupling

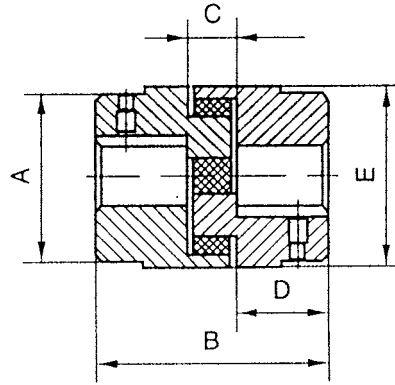


- good temperature and oil resistance
- free of maintenance
- simple structure and easy to install
- The rubbers can be individually replaced when they are worn
- Standard products are finished bore products.

L035- L150



L190- L225



Catalog	Dimension The sporo					Weight Lbs.	Torque In.-Lbs	Maximum RPM	Bore		List Price	Buna Spider
	A	B	C	D	E				Min	Max		
L030	5/8	13/16	9/32	17/64	-	0.07	3.52	31000	1/8	3/8	\$3.04	1.43
L050	15/64	123/32	15/32	5/8	-	0.13	25.8	18000	1/4	5/8	\$3.50	1.43
L070	123/64	2	1/2	3/4	-	0.25	44.1	14000	1/4	3/4	\$5.10	2.85
L075	1 3/4	2 1/8	1/2	13/16	-	0.44	88.2	11000	1/4	7/8	\$8.70	2.85
L090	2 7/64	2 1/8	1/2	13/16	-	0.69	145	9000	1/4	1	\$10.30	4.46
L095	2 7/64	2 1/2	1/2	1	-	0.84	189	9000	7/16	1 1/8	\$11.80	4.46
L099	2 17/32	2 7/8	3/4	1 1/16	-	1.19	315	7000	7/16	1 3/16	\$15.70	8.90
L100	2 17/32	3 1/2	3/4	1 3/8	-	1.47	415	7000	7/16	1 3/8	\$16.96	8.90
L110	3 5/16	4 1/4	7/8	1 11/16	-	3.20	788	5000	5/8	1 5/8	\$32.50	13.75
L150	2 3/4	4 1/2	1	1 3/4	-	4.50	1260	5000	5/8	1 7/8	\$38.90	13.75
L190	4	5 1/4	1	2 1/8	4 1/2	8.25	1702	5000	3/4	2 1/8	\$57.50	23.57
L225	4 1/4	6	1	2 1/2	5	12.00	2332	4000	3/4	2 5/8	\$67.75	31.07

Keyway dimensions conform to, USAS B 17.1-1967, standards.

Above. price is finished bore, with keyway and setscrew.

