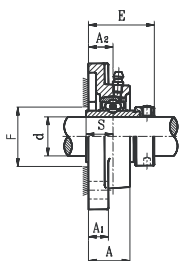
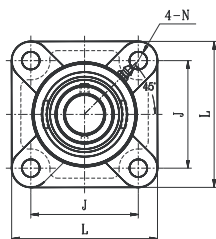


FOUR BOLT FLANGE UNITS

HCF STANDARD DUTY ECCENTRIC LOCKING COLLAR TYPE



- Cast iron housing
- Wide inner ring bearing

Unit No.	Shaft Dia. d		Dimension (in) (mm)									Bolt Size (in)	Bearing No.	Housing No.	Weight (lb)
	(in.)	(mm)	L	J	A ₂	A ₁	A	E	N	S	F MIN.				
HCF201S 201-8S 202S 202-10S 203S 203-11S	12 1/2 15 5/8 17 11/16	12 15 17 20	3 76	2-1/8 54	19/32 15	7/16 11	31/32 24.5	1-1/2 38.4	7/16 11.5	9/16 13.9		3/8	HC201 201-8S 202S 202-10S 203S 203-11S	FU203	1.12
HCF201 201-8 202 202-10 203 203-11 204-12 204	12 1/2 15 5/8 17 11/16 3/4 20	12 15 17 20	3-3/8 86	2-17/32 64	3/4 19	19/32 15	1-5/32 29.5	1-25/32 45.5	7/16 11.5	21/32 17.0	1-7/32 31	3/8	HC201 201-8 202 202-10 203 203-11 204-12 204	FU204	1.70
HCF205-14 205-15 205 205-16	7/8 15/16 25 1	25	3-3/4 95	2-3/4 70	3/4 19	19/32 15	1-3/16 30	1-13/16 45.9	7/16 11.5	11/16 17.4	1-13/32 36	3/8	HC205-14 205-15 205 205-16	FU205	1.76
HCF206-18 206 206-19 206-20	1-1/8 1-3/16 1-1/4	30	4-1/4 108	3-9/32 83	25/32 20	23/32 16	1-9/32 32.5	1-31/32 50.1	7/16 11.5	23/32 18.2	1-21/32 42	3/8	HC206-18 206 206-19 206-20	FU206	2.64
HCF207-20 207-21 207-22 207 207-23	1-1/4 1-5/16 1-3/8 35 1-7/16	35	4-19/32 117	3-5/8 92	13/16 21	11/16 17	1-3/8 35	2-3/32 53.3	9/16 14.0	3/4 18.8	1-31/32 50	1/2	HC207-20 207-21 207-22 207 207-23	FU207	3.25
HCF208-24 208-25 208	1-1/2 1-9/16 40	40	5-1/8 130	4-1/32 102	15/16 24	11/16 17	1-17/32 39	2-3/8 58.9	9/16 14.0	27/32 21.4	2-5/32 55	1/2	HC208-24 208-25 208	FU208	4.19
HCF209-26 209-27 209-28 209	1-5/8 1-11/16 1-3/4 45	45	5-13/32 137	4-1/8 105	15/16 24	23/32 18	1-9/16 40	2-3/8 58.9	5/8 16.0	27/32 21.4		9/16	HC209-26 209-27 209-28 209	FU209	5.07
HCF210-30 210-31 210	1-7/8 1-15/16 50	50	5-5/8 143	4-3/8 111	1-1/8 28	25/32 20	1-3/4 45	2-19/32 66.1	23/32 18.0	31/32 24.6	2-17/32 64	5/8	HC210-30 210-31 210	FU210	5.73
HCF211-32 211-34 211 211-35	2 2-1/8 55 2-3/16	55	6-3/8 162	5-1/8 130	1-7/32 31	13/16 21	1-15/16 49	2-15/16 74.6	23/32 18.0	1-3/32 27.7	2-13/16 71	5/8	HC211-32 211-34 211 211-35	FU211	8.38
HCF212-36 212 212-38 212-39	2-1/4 60 2-3/8 2-7/16	60	6-7/8 175	5-5/8 143	1-11/32 34	7/8 22	2-1/8 53.5	3-3/16 80.8	23/32 18.0	1-7/32 30.9	3-1/32 77	5/8	HC212-36 212 212-38 212-39	FU212	10.58
HCF213-40 213	2-1/2 65	65	7-3/8 187	5-7/8 149	1-1/2 38	7/8 22	2-1/4 58	3-1/2 89	23/32 18.0	1-11/32 34.1	3-5/16 84	5/8	HC213-40 213	FU213	13.22
HCF214-44 214	2-3/4 70	70	7-19/32 193	6 152	1-1/2 38	29/32 23	2-3/8 60	3-1/2 89.6	23/32 18.0	1-11/32 34.1	3-1/2 89	5/8	HC214-44 214	FU214	13.89
HCF215 215-48	75 3	75	7-7/8 200	6-1/4 159	1-5/8 41	15/16 24	2-7/16 62	3-3/34 95.8	23/32 18.0	1-15/32 37.3	3-11/16 94	5/8	HC215 215-48	FU215	15.87
HCF216	80	80	8-3/16 208	6-1/2 165	1-21/32 42	1 25	2-1/2 63	3-15/16 99.9	7/8 22.0	1-15/32 37/3	3-31/32 101	3/4	HC216	FU216	15.91

* Dual seal standard. Triple lip seal (R3 suffix) optional.

