

# SPROCKET

## NO.80

### Stock Bore

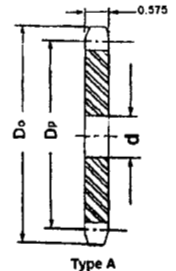
### 1" PITCH

#### Single Type-A

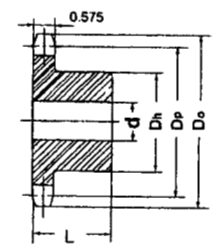
No. Teeth	Catalog No.	Outside Dia. Do	Pitch Dia. Dp	Stock Bore d	Weight Lbs.
8	80A8	3.010	2.613		
9	80A9	3.350	2.924	15/16	.8
10	80A10	3.680	3.236	15/16	1.0
11	80A11	4.010	3.550	15/16	1.3
12	80A12	4.330	3.864	15/16	1.5
13	80A13	4.660	4.179	15/16	1.8
14	80A14	4.980	4.494	15/16	2.2
15	80A15	5.300	4.810	15/16	2.5
16	80A16	5.630	5.126	15/16	2.9
17	80A17	5.950	5.442	15/16	3.3
18	80A18	6.270	5.759	15/16	3.7
19	80A19	6.590	6.076	15/16	4.1
20	80A20	6.910	6.392	15/16	4.7
21	80A21	7.240	6.710	15/16	4.9
22	80A22	7.560	7.027	15/16	5.5
23	80A23	7.880	7.344	15/16	6.3
24	80A24	8.200	7.661	15/16	6.7
25	80A25	8.520	7.979	15/16	7.2
26	80A26	8.840	8.296	13/16	7.8
27	80A27	9.160	8.614	13/16	8.6
28	80A28	9.480	8.931	13/16	9.3
29	80A29	9.800	9.249	13/16	9.8
30	80A30	10.110	9.567	13/16	10.7
31	80A31	10.430	9.885	13/16	11.3
32	80A32	10.750	10.202	13/16	12.1
33	80A33	11.070	10.520	13/16	13.6
34	80A34	11.390	10.838	13/16	14.3
35	80A35	11.710	11.156	13/16	14.8
36	80A36	12.030	11.474	13/16	16.1
37	80A37	12.350	11.792	13/16	16.8
38	80A38	12.670	12.110	13/16	17.2
39	80A39	12.990	12.428	13/16	17.9
40	80A40	13.310	12.746	13/16	18.9
41	80A41	13.630	13.064	1 1/4	21.0
42	80A42	13.940	13.382	1 1/4	21.8
43	80A43	14.260	13.700	1 1/4	23.6
44	80A44	14.580	14.018	1 1/4	24.3
45	80A45	14.900	14.336	1 1/4	25.2
46	80A46	15.220	14.654	1 1/4	26.6
47	80A47	15.540	14.972	1 1/4	27.3
48	80A48	15.860	15.290	1 1/4	27.8
49	80A49	16.180	15.608	1 1/4	28.9
50	80A50	16.500	15.926	1 1/4	30.9
51	80A51	16.810	16.244	1 1/4	32.2
52	80A52	17.130	16.562	1 1/4	33.0
53	80A53	17.450	16.880	1 1/4	34.9
54	80A54	17.770	17.198	1 1/4	36.6
55	80A55	18.090	17.517	1 1/4	37.5
56	80A56	18.410	17.835	1 1/4	38.6
57	80A57	18.730	18.153	1 1/4	39.9
58	80A58	19.040	18.471	1 1/4	41.3
59	80A59	19.360	18.789	1 1/4	42.9
60	80A60	19.680	19.107	1 1/4	45.3
65	80A65	21.270	20.698	1 1/2	52.2
70	80A70	22.870	22.289	1 1/2	59.8
72	80A72	23.500	22.926	1 1/2	65.7
76	80A76	24.780	24.199	1 1/2	70.2
80	80A80	26.050	25.471	1 1/2	79.6
84	80A84	27.330	26.744	1 1/2	86.1
90	80A90	29.240	28.654	1 1/2	115.0
96	80A96	31.150	30.563	1 1/2	120.0
112	80A112	36.240	35.655	1 1/2	165.0

#### Single Type-B & C

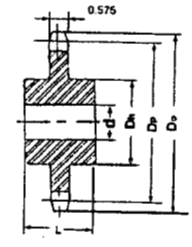
Catalog No.	Bore: d (inches)		Hub (inches)		Weight Lbs.
	Stock	Rec Max	Dia Dh	LTB. L	
80B8	1	1	1 15/16*	15/8	1.40
80B9	1	15/16	2 1/4*	15/8	1.60
80B10	1	1 1/2	2 9/16*	15/8	2.20
80B11	1	15/8	2 13/16*	15/8	3.20
80B12	1	1 7/8	3 1/8*	15/8	3.40
80B13	1	2	3	1 1/2	3.50
80B14	1	2 1/4	3 1/4	1 1/2	4.10
80B15	1	2 1/2	3 13/16	1 1/2	5.30
80B16	1	2 3/4	4	1 1/2	5.90
80B17	1	2 3/4	4	1 1/2	6.60
80B18	1	2 3/4	4 1/4	1 1/2	7.30
80B19	1	2 3/4	4 1/4	1 1/2	7.80
80B20	1	2 3/4	4 1/4	1 1/2	8.40
80B21	1	2 3/4	4 1/4	1 3/4	9.40
80B22	1	2 3/4	4 1/4	1 3/4	10.00
80B23	1	2 3/4	4 1/4	1 3/4	10.70
80B24	1	2 3/4	4 1/4	1 3/4	11.30
80B25	1	2 3/4	4 1/4	1 3/4	11.90
80B26	1 1/4	3 1/4	4 3/4	2	14.30
80B27	1 1/4	3 1/4	4 3/4	2	15.40
80B28	1 1/4	3 1/4	4 3/4	2	16.00
80B29	1 3/16	3 1/4	4 3/4	2	17.10
80B30	1 3/16	3 1/4	4 3/4	2	17.40
80B31	1 3/16	3 1/4	4 3/4	2	18.70
80B32	1 3/16	3 1/4	4 3/4	2	19.50
80B33	1 3/16	3 1/4	4 3/4	2	19.60
80B34	1 3/16	3 1/4	4 3/4	2	21.30
80B35	1 3/16	3 1/4	4 3/4	2	22.10
80B36	1 3/16	3 1/4	4 3/4	2	23.10
80B37	1 3/16	3 1/4	4 3/4	2	24.00
80B38	1 3/16	3 1/4	4 3/4	2	24.70
80B39	1 3/16	3 1/4	4 3/4	2	25.60
80B40	1 3/16	3 1/4	4 3/4	2	26.70
80B41	1 1/4	3 1/4	4 3/4	2	27.80
80B42	1 1/4	3 1/4	4 3/4	2	28.70
80B43	1 1/4	3 1/4	4 3/4	2	29.50
80B44	1 1/4	3 1/4	4 3/4	2	29.90
80B45	1 1/4	3 1/4	4 3/4	2	31.40
80B46	1 1/4	3 1/4	4 3/4	2	33.10
80B47	1 1/4	3 1/4	4 3/4	2	34.00
80B48	1 1/4	3 1/4	4 3/4	2	35.50
80B49	1 1/4	3 1/4	4 3/4	2	35.80
80B50	1 1/4	3 1/4	4 3/4	2	37.30
80B51	1 1/4	3 1/4	4 3/4	2	38.90
80B52	1 1/4	3 1/4	4 3/4	2	41.60
80B53	1 1/4	3 1/4	4 3/4	2	42.90
80B54	1 1/4	3 1/2	5 1/4	2	44.70
80B55	1 1/4	3 1/2	5 1/4	2	46.90
80B56	1 1/4	3 1/2	5 1/4	2	49.00
80B57	1 1/4	3 1/2	5 1/4	2	51.60
80B58	1 1/4	3 1/2	5 1/4	2	53.00
80B59	1 1/4	3 1/2	5 1/4	2	54.00
80B60	1 1/4	3 1/2	5 1/4	2	54.50
80B65	1 1/4	3 1/2	5 1/4	2	61.80
80C70	1 1/2	4 1/4	6 1/4	3 1/2	75.70
80C72	1 1/2	4 1/4	6 1/4	3 1/2	81.40
80C76	1 1/2	4 1/4	6 1/4	3 1/2	87.80
80C80	1 1/2	4 1/4	6 1/4	3 1/2	89.90
80C84	1 1/2	4 1/4	6 1/4	3 1/2	99.90
80C90	1 1/2	4 1/4	6 1/4	3 1/2	106.00
80C96	1 1/2	4 1/4	6 1/4	3 1/2	117.00
80C112	1 1/2	4 1/4	6 1/4	3 1/2	154.00



Type A



Type B



Type C

\* Has recessed groove in hub for chain clearance. §