

SPROCKET

NO.41

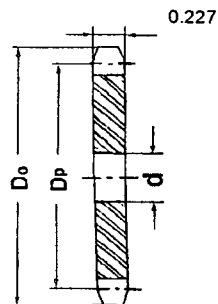
Finished Bore

1/2" PITCH

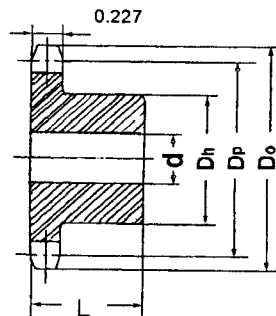
TYPE F-BORED TO SIZE

No. Teeth	Catalog No	Outside Dia. Do	LTB L	Weight Lbs. (App.)	Stock Finished Bores Includes Keyway and Setscrew
9	41B9F	1.670	7/8	.20	-★1/2 - 5/8
10	41B10F	1.840	7/8	.25	-★1/2 - 5/8
11	41B11F	2.000	7/8	.32	-★1/2 - 5/8 - 3/4
12	41B12F	2.170	7/8	.33	-★1/2 - 5/8 - 3/4 - 7/8
13	41B13F	2.330	7/8	.43	-★1/2 - 5/8 - 3/4 - 7/8 - 1
14	41B14F	2.490	7/8	.48	-★1/2 - 5/8 - 3/4 - 7/8 - 1
15	41B15F	2.650	7/8	.59	-★1/2 - 5/8 - 3/4 - 1
16	41B16F	2.810	7/8	.72	- 5/8 - 3/4 - 1
17	41B17F	2.980	1	1.00	- 5/8 - 3/4 - 1
18	41B18F	3.140	1	1.10	- 5/8 - 3/4 - 1
19	41B19F	3.300	1	1.21	- 5/8 - 3/4 - 1
20	41B20F	3.460	1	1.39	- 5/8 - 3/4 - 1
21	41B21F	3.620	1	1.77	- 5/8 - 3/4 - 1
22	41B22F	3.780	1	1.92	- 5/8 - 3/4 - 1
23	41B23F	3.940	1	2.18	- 5/8 - 3/4 - 1
24	41B24F	4.100	1	2.24	- 5/8 - 3/4 - 1
25	41B25F	4.260	1	2.42	- 5/8 - 3/4 - 1
26	41B26F	4.420	1	2.46	- 5/8 - 3/4 - 1
27	41B27F	4.580	1	2.52	- 5/8 - 3/4 - 1
28	41B28F	4.740	1	2.60	- 5/8 - 3/4 - 1
30	41B30F	5.060	1	2.76	- 5/8 - 3/4 - 1
32	41B32F	5.380	1	2.92	- 5/8 - 3/4 - 1
35	41B35F	5.860	1	3.08	- 5/8 - 3/4 - 1
36	41B36F	6.020	1	3.28	- 5/8 - 3/4 - 1
40	41B40F	6.650	1 1/16	3.82	- 3/4 - 1 - 1 1/8 - 1 3/16 - 1 1/4 - 1 3/8 - 1 7/16 - 1 1/2
42	41B42F	6.970	1 1/16	3.68	- 3/4 - 1 - 1 1/8 - 1 3/16 - 1 1/4 - 1 3/8 - 1 7/16 - 1 1/2
45	41B45F	7.450	1 1/16	3.94	- 3/4 - 1 - 1 1/8 - 1 3/16 - 1 1/4 - 1 3/8 - 1 7/16 - 1 1/2
48	41B48F	7.930	1 1/16	4.68	- 3/4 - 1 - 1 1/8 - 1 3/16 - 1 1/4 - 1 3/8 - 1 7/16 - 1 1/2
54	41B54F	8.890	1 1/16	5.44	- 3/4 - 1 - 1 1/8 - 1 3/16 - 1 1/4 - 1 3/8 - 1 7/16 - 1 1/2
60	41B60F	9.840	1 1/16	6.54	- 3/4 - 1 - 1 1/8 - 1 3/16 - 1 1/4 - 1 3/8 - 1 7/16 - 1 1/2
70	41B70F	11.430	1 3/16	9.28	- 3/4 - 1 - 1 1/8 - 1 3/16 - 1 1/4 - 1 3/8 - 1 7/16 - 1 1/2
72	41B72F	11.750	1 3/16	9.38	- 3/4 - 1 - 1 1/8 - 1 3/16 - 1 1/4 - 1 3/8 - 1 7/16 - 1 1/2
80	41B80F	13.030	1 3/16	11.28	- 3/4 - 1 - 1 1/8 - 1 3/16 - 1 1/4 - 1 3/8 - 1 7/16 - 1 1/2
84	41B84F	13.660	1 3/16	11.94	- 3/4 - 1 - 1 1/8 - 1 3/16 - 1 1/4 - 1 3/8 - 1 7/16 - 1 1/2
96	41B96F	15.570	1 3/16	14.51	1 - 1 1/8 - 1 3/16 - 1 1/4 - 1 3/8 - 1 7/16 - 1 1/2
112	41B112F	18.120	1 3/16	18.81	1 - 1 1/8 - 1 3/16 - 1 1/4 - 1 3/8 - 1 7/16 - 1 1/2

* Indicates no Keyway. (2) 1/4" Setscrews only in 1/2 Bore.
Hub diameters vary to suit different Bore Sizes.
KEYWAY IS ON CENTER LINE OF TOOTH.



Type A



Type B