

SPROCKET

NO.40

Stock Bore

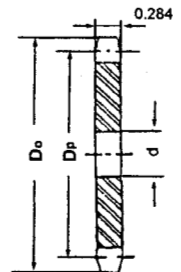
1/2" PITCH

Single Type-A

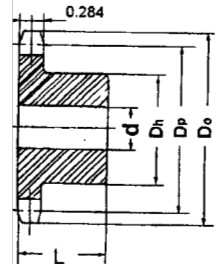
No. Teeth	Catalog No.	Outside Dia. Do	Pitch Dia.	Stock Bore d	Weight Lbs.
8	40A8	1.500	1.306		
9	40A9	1.670	1.462		
10	40A10	1.840	1.618		
11	40A11	2.000	1.775		
12	40A12	2.170	1.932	1/2	.18
13	40A13	2.330	2.089	1/2	.22
14	40A14	2.490	2.247	1/2	.26
15	40A15	2.650	2.405	5/8	.30
16	40A16	2.810	2.563	5/8	.34
17	40A17	2.980	2.721	5/8	.36
18	40A18	3.140	2.879	5/8	.44
19	40A19	3.300	3.038	5/8	.46
20	40A20	3.460	3.196	5/8	.56
21	40A21	3.620	3.355	5/8	.58
22	40A22	3.780	3.513	5/8	.66
23	40A23	3.940	3.672	5/8	.72
24	40A24	4.100	3.831	5/8	.82
25	40A25	4.260	3.989	5/8	.88
26	40A26	4.420	4.148	5/8	.94
27	40A27	4.580	4.307	5/8	.98
28	40A28	4.740	4.465	5/8	1.10
29	40A29	4.900	4.624	5/8	1.22
30	40A30	5.060	4.783	19/32	1.26
31	40A31	5.220	4.943	19/32	1.40
32	40A32	5.380	5.101	19/32	1.48
33	40A33	5.540	5.260	19/32	1.56
34	40A34	5.700	5.419	19/32	1.64
35	40A35	5.860	5.578	19/32	1.70
36	40A36	6.020	5.737	19/32	1.84
37	40A37	6.180	5.896	19/32	1.92
38	40A38	6.330	6.055	19/32	2.00
39	40A39	6.490	6.214	19/32	2.02
40	40A40	6.650	6.373	23/32	2.22
41	40A41	6.810	6.532	23/32	2.42
42	40A42	6.970	6.691	23/32	2.50
43	40A43	7.130	6.850	23/32	2.80
44	40A44	7.290	7.009	23/32	2.85
45	40A45	7.450	7.168	23/32	3.15
46	40A46	7.610	7.327	23/32	3.26
47	40A47	7.770	7.486	23/32	3.32
48	40A48	7.930	7.645	23/32	3.38
49	40A49	8.090	7.804	23/32	3.44
50	40A50	8.250	7.963	23/32	3.62
51	40A51	8.410	8.122	23/32	3.80
52	40A52	8.570	8.281	23/32	4.00
53	40A53	8.730	8.440	23/32	4.20
54	40A54	8.890	8.599	23/32	4.44
55	40A55	9.040	8.758	23/32	4.54
56	40A56	9.200	8.917	23/32	4.84
57	40A57	9.360	9.076	23/32	5.00
58	40A58	9.520	9.236	23/32	5.12
59	40A59	9.680	9.395	23/32	5.30
60	40A60	9.840	9.554	23/32	5.48
70	40A70	11.430	11.145	23/32	7.24
72	40A72	11.750	11.463	23/32	7.74
80	40A80	13.030	12.736	23/32	10.20
84	40A84	13.660	13.372	23/32	10.07
96	40A96	15.570	15.282	15/16	12.15
112	40A112	18.120	17.828	15/16	20.00

Single Type-B

Catalog No.	Bore: d (inches)		Hub (inches)		Weight Lbs.
	Stock	Rec Max	Dia Dh	LTB. L	
40B8	1/2	1/2	31/32*	7/8	.18
40B9	1/2	9/16	11/16*	7/8	.20
40B10	1/2	3/4	11/4*	7/8	.27
40B11	1/2	7/8	13/8*	7/8	.35
40B12	1/2	1	19/16*	7/8	.45
40B13	1/2	1 1/16	19/16	7/8	.50
40B14	1/2	1 1/8	1 11/16	7/8	.59
40B15	1/2	1 1/4	1 13/16	7/8	.70
40B16	5/8	13/8	2	7/8	.79
40B17	5/8	17/16	2 1/8	1	1.04
40B18	5/8	1 1/2	2 5/16	1	1.22
40B19	5/8	1 3/4	2 1/2	1	1.43
40B20	5/8	1 7/8	2 5/8	1	1.56
40B21	5/8	1 7/8	2 3/4	1	1.73
40B22	5/8	1 7/8	2 7/8	1	1.96
40B23	5/8	2	3	1	2.13
40B24	5/8	2 1/4	3 1/4	1	2.41
40B25	5/8	2 1/4	3 1/4	1	2.54
40B26	5/8	2 1/4	3 1/4	1	2.58
40B27	5/8	2 1/4	3 1/4	1	2.66
40B28	5/8	2 1/4	3 1/4	1	2.73
40B29	5/8	2 1/4	3 1/4	1	2.88
40B30	5/8	2 1/4	3 1/4	1	2.98
40B31	5/8	2 1/4	3 1/4	1	3.08
40B32	5/8	2 1/4	3 1/4	1	3.16
40B33	5/8	2 1/4	3 1/4	1	3.22
40B34	5/8	2 1/4	3 1/4	1	3.30
40B35	5/8	2 1/4	3 1/4	1	3.46
40B36	5/8	2 1/4	3 1/4	1	3.58
40B37	5/8	2 1/4	3 1/4	1	3.64
40B38	5/8	2 1/4	3 1/4	1	3.70
40B39	5/8	2 1/4	3 1/4	1	4.10
40B40	3/4	2 3/8	3 1/2	1 1/8	4.69
40B41	3/4	2 3/8	3 1/2	1 1/8	4.76
40B42	3/4	2 3/8	3 1/2	1 1/8	4.82
40B43	3/4	2 3/8	3 1/2	1 1/8	5.05
40B44	3/4	2 3/8	3 1/2	1 1/8	5.15
40B45	3/4	2 3/8	3 1/2	1 1/8	5.30
40B46	3/4	2 3/8	3 1/2	1 1/8	5.40
40B47	3/4	2 3/8	3 1/2	1 1/8	5.44
40B48	3/4	2 3/8	3 1/2	1 1/8	5.84
40B49	3/4	2 3/8	3 1/2	1 1/8	5.90
40B50	3/4	2 3/8	3 1/2	1 1/8	5.96
40B51	3/4	2 3/8	3 1/2	1 1/8	6.10
40B52	3/4	2 3/8	3 1/2	1 1/8	6.20
40B53	3/4	2 3/8	3 1/2	1 1/8	6.30
40B54	3/4	2 3/8	3 1/2	1 1/8	6.42
40B55	3/4	2 3/8	3 1/2	1 1/8	6.60
40B56	3/4	2 3/8	3 1/2	1 1/8	6.80
40B57	3/4	2 3/8	3 1/2	1 1/8	6.90
40B58	3/4	2 3/8	3 1/2	1 1/8	7.40
40B59	3/4	2 3/8	3 1/2	1 1/8	7.60
40B60	3/4	2 3/8	3 1/2	1 1/8	7.86
40B70	3/4	2 3/4	4	1 1/4	11.00
40B72	3/4	2 3/4	4	1 1/4	11.50
40B80	3/4	2 3/4	4	1 1/4	13.40
40B84	3/4	2 3/4	4	1 1/4	14.04
40B96	1	2 3/4	4	1 1/4	17.56
40B112	1	2 3/4	4	1 1/4	22.56



Type A



Type B

* Has recessed groove in hub for chain clearance.

Maximum Bores shown will accommodate Standard Keyway and Setscrew over Keyway. Slightly larger Bores are possible with no Keyway, Shallow Keyway or Setscrew at angle to Keyway.