

# SPROCKET

## NO.25

### Stock Bore

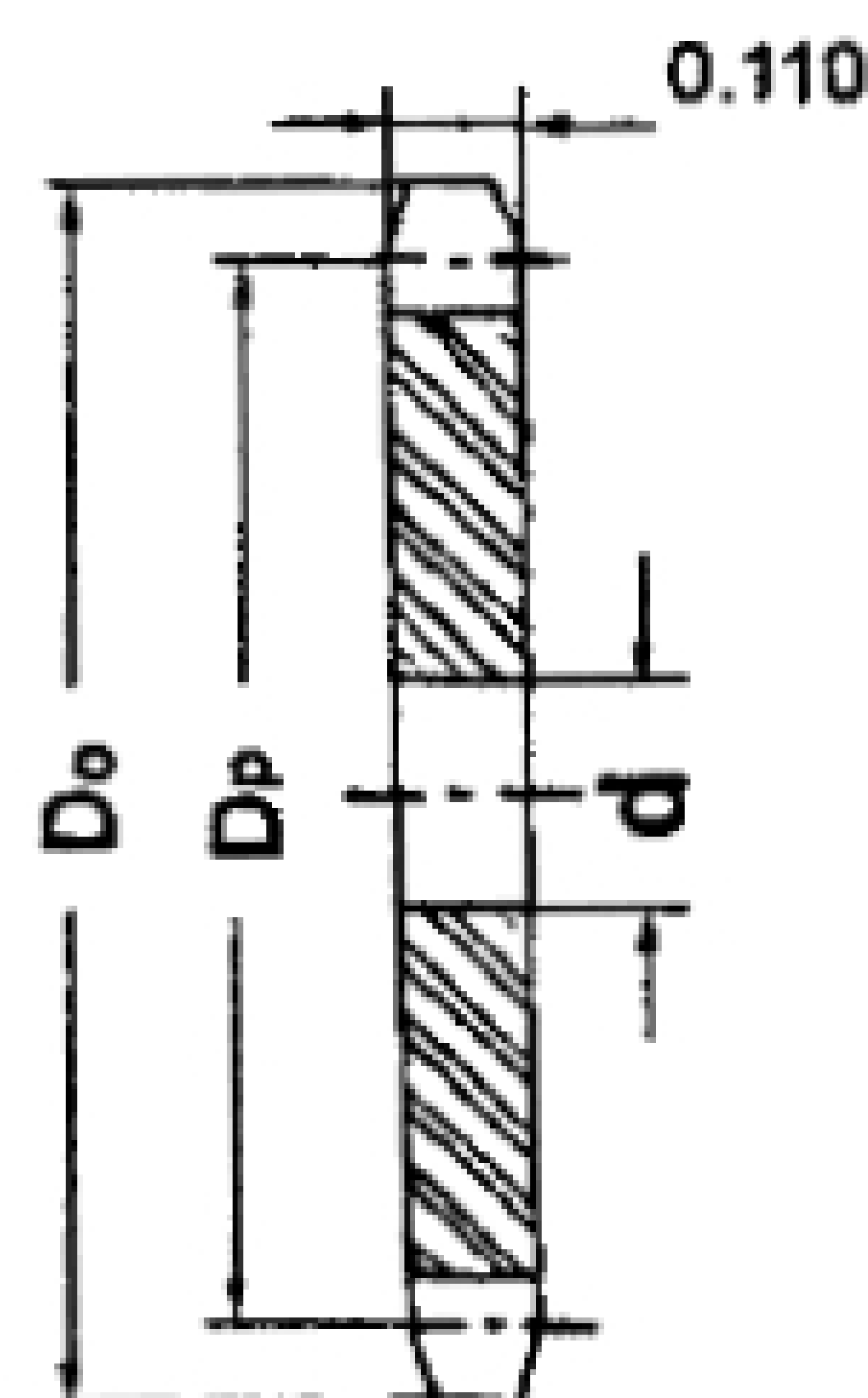
### 1/4" PITCH

#### Single Type-A

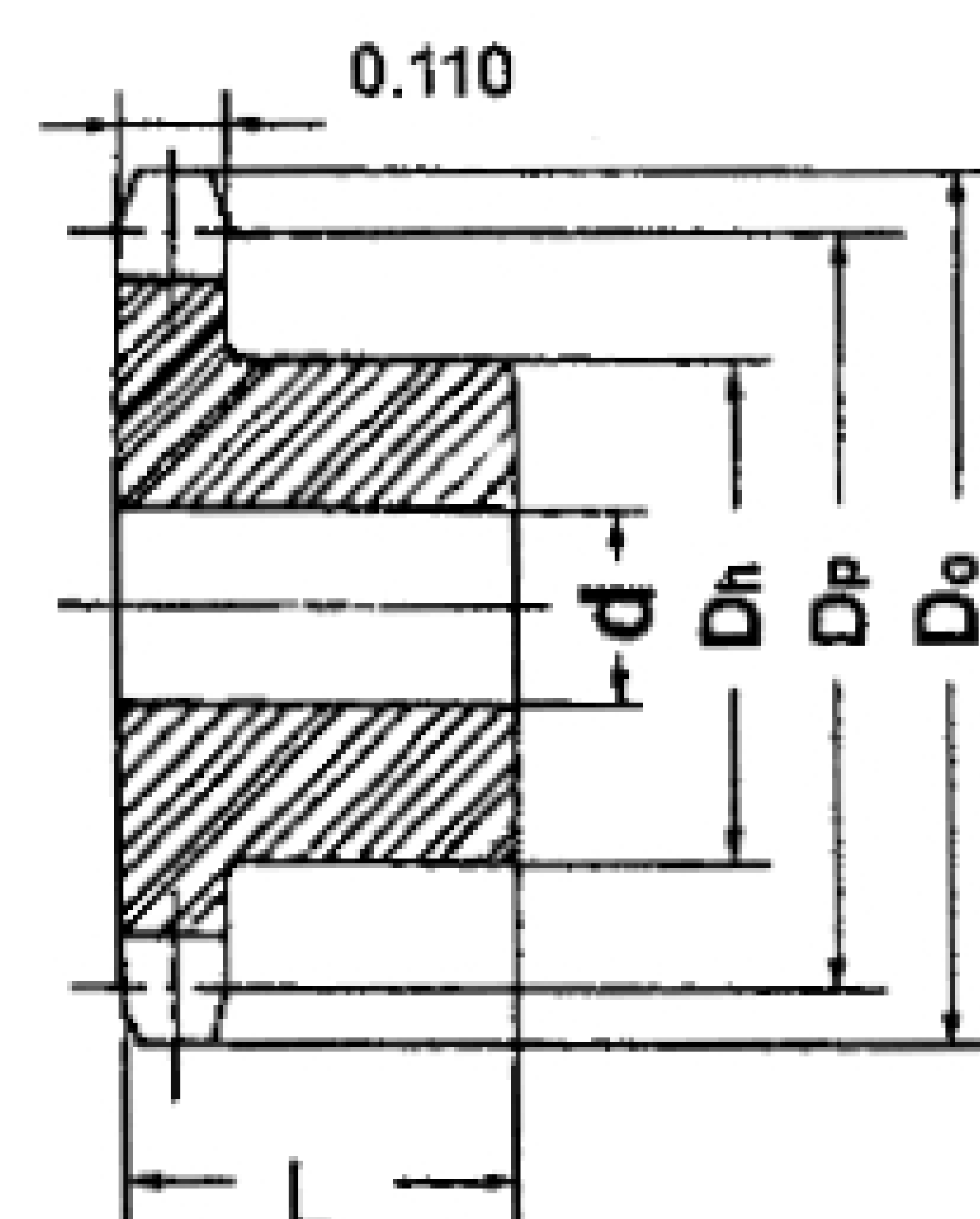
#### Single Type-B

No. Teeth	Catalog No.	Outside Dia. Do	Pitch Dia.	Stock Bore d	Weight Lbs.	List Price	Catalog No.	Bore: d (inches)		Hub (inches)		Weight Lbs.	List Price
								Stock	Rec Max	Dia Dh	LTB. L		
9	25A9	.837	.731				25B9	1/4	1/4	7/16	1/2	.03	6.72
10	25A10	.919	.809				25B10	1/4	1/4	1/2	1/2	.03	6.88
11	25A11	1.002	.887				25B11	1/4	5/16	9/16	1/2	.04	7.04
12	25A12	1.083	.966				25B12	1/4	3/8	5/8	1/2	.06	7.32
13	25A13	1.167	1.045				25B13	1/4	7/16	23/32	1/2	.07	7.64
14	25A14	1.246	1.124				25B14	1/4	9/16	13/16	1/2	.08	7.80
15	25A15	1.326	1.203				25B15	1/4	9/16	57/64	1/2	.10	7.80
16	25A16	1.407	1.282				25B16	1/4	9/16	31/32	1/2	.12	8.08
17	25A17	1.487	1.361				25B17	1/4	5/8	11/32	1/2	.14	8.24
18	25A18	1.568	1.440	1/4	.04	8.70	25B18	1/4	3/4	11/8	1/2	.16	8.56
19	25A19	1.648	1.519	1/4	.04	8.85	25B19	1/4	13/16	17/32	1/2	.19	8.56
20	25A20	1.729	1.598	1/4	.04	8.85	25B20	1/4	7/8	19/32	5/8	.25	8.84
21	25A21	1.809	1.678	3/8	.04	9.10	25B21	1/4	7/8	13/8	5/8	.28	9.16
22	25A22	1.889	1.757	3/8	.06	9.20	25B22	1/4	15/16	17/16	5/8	.31	9.32
23	25A23	1.969	1.836	3/8	.06	9.60	25B23	1/4	1	11/2	5/8	.32	9.76
24	25A24	2.049	1.915	3/8	.08	10.00	25B24	3/8	1	11/2	5/8	.33	10.24
25	25A25	2.129	1.995	3/8	.08	10.20	25B25	3/8	1	11/2	5/8	.34	10.40
26	25A26	2.209	2.074	3/8	.09	10.30	25B26	3/8	1	11/2	5/8	.35	10.84
28	25A28	2.369	2.233	3/8	.10	10.50	25B28	3/8	1	11/2	5/8	.36	11.76
30	25A30	2.529	2.392	3/8	.12	11.00	25B30	3/8	1	11/2	5/8	.38	12.52
32	25A32	2.688	2.551	3/8	.14	11.50	25B32	3/8	1	11/2	5/8	.40	13.80
35	25A35	2.928	2.789	3/8	.16	12.50	25B35	3/8	1	11/2	5/8	.46	15.00
36	25A36	3.008	2.869	3/8	.18	12.70	25B36	3/8	1	11/2	3/4	.50	15.60
40	25A40	3.327	3.187	1/2	.20	13.50	25B40	1/2	13/8	2	3/4	.53	17.82
45	25A45	3.725	3.584	1/2	.25	14.20	25B45	1/2	13/8	2	3/4	.56	19.53
48	25A48	3.964	3.823	1/2	.32	14.35	25B48	1/2	13/8	2	3/4	.56	21.84
54	25A54	4.442	4.300	1/2	.38	15.90	25B54	1/2	13/8	2	3/4	1.00	24.24
60	25A60	4.920	4.777	1/2	.54	16.70	25B60	1/2	13/8	2	3/4	1.10	26.84
70	25A70	5.717	5.572	1/2	.70	17.10	25B70	1/2	13/8	2	3/4	1.25	31.50
72	25A72	5.876	5.732	1/2	.74	17.50	25B72	1/2	13/8	2	3/4	1.30	35.70

SEE CURRENT DISCOUNT SHEET FOR ALTERATION CHARGES. Maximum bores shown will accommodate Standard Keyway and Setscrew over Keyway. Slightly larger Bores are possible with no Keyway, Shallow Keyway or Setscrew at angle to Keyway.



Type A



Type B