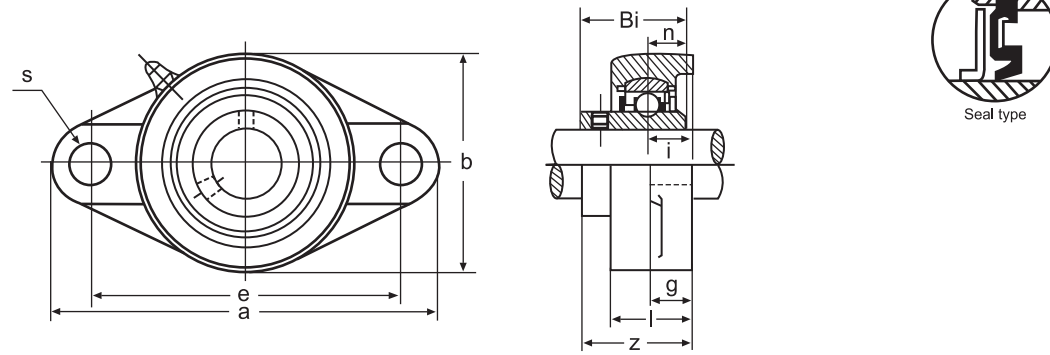


2-BOLT FLANGE UNITS

SET SCREW TYPE

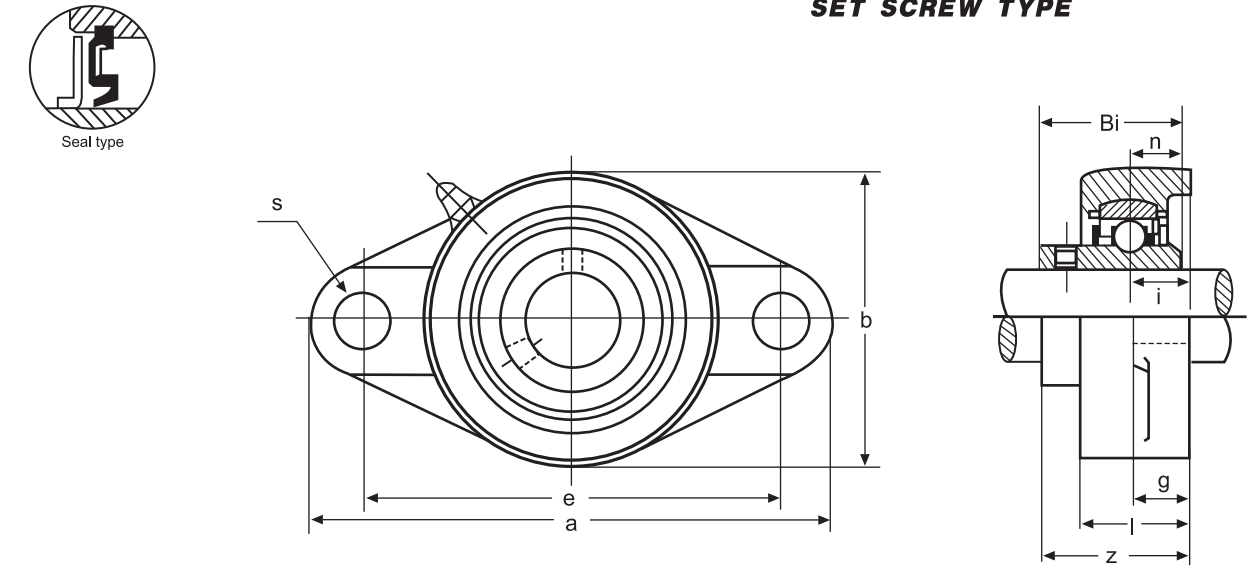


UCFL200-SERIES

Shaft Dia.		Unit No.	Dimensions(in.)										Bolt Used in.	Bearing No.	Housing No.	Weight	
mm	in.		a	e	i	g	l	s	b	z	Bi	n				kg	lbs.
12	1/2	UCFL201-8	4-7/16	3-35/64	19/32	7/16	1	15/32	2-3/8	1-5/16	1.2205	0.5000	3/8	UC201-8	FL204	0.50	1.10
	5/8	202-10												UC201-10			
	3/4	204-12												UC201-12			
		UCFL201												UC201			
15		202		202													
17		203		203													
20		204		204													
25	7/8	UCFL205-14	5-1/8	3-57/64	5/8	1/2	1-1/16	5/8	2-11/16	1-15/32	1.3386	0.5630	1/2	UC205-14	FL205	0.70	1.54
	15/16	205-15												UC205-15			
	1	205-16												UC205-16			
		UCFL205												UC205			
30	1-1/16	UCFL206-17	5-13/16	4-39/64	45/64	1/2	1-7/32	5/8	3-5/32	1-19/32	1.5000	0.6260	1/2	UC206-17	FL206	0.98	2.16
	1-1/8	206-18												UC206-18			
	1-3/16	206-19												UC206-19			
	1-1/4	206-20												UC206-20			
		UCFL206												UC206			
35	1-1/4	UCFL207-20	6-11/32	5-1/8	3/4	9/16	1-11/32	5/8	3-17/32	1-3/4	1.6890	0.6890	1/2	UC207-20	FL207	1.35	2.98
	1-5/16	207-21												UC207-21			
	1-3/8	207-22												UC207-22			
	1-7/16	207-23												UC207-23			
		UCFL207												UC207			
40	1-1/2	UCFL208-24	6-7/8	5-43/64	53/64	9/16	1-13/32	5/8	3-15/16	2-1/64	1.9370	0.7480	1/2	UC208-24	FL208	1.69	3.73
	1-9/16	208-25												UC208-25			
		UCFL208												UC208			
45	1-5/8	UCFL209-26	7-13/32	5-53/64	55/64	19/32	1-1/2	3/4	4-1/4	2-1/16	1.9370	0.7480	5/8	UC209-26	FL209	2.04	4.50
	1-11/16	209-27												UC209-27			
	1-3/4	209-28												UC209-28			
		UCFL209												UC209			
50	1-7/8	UCFL210-30	7-3/4	6-3/16	55/64	19/32	1-9/16	3/4	4-17/32	2-5/32	2.0315	0.7480	5/8	UC210-30	FL210	2.30	5.07
	1-15/16	210-31												UC210-31			
		UCFL210												UC210			
55	2	UCFL211-32	8-13/16	7-1/4	63/64	23/32	1-11/16	3/4	5-1/8	2-5/16	2.1890	0.8740	5/8	UC211-32	FL211	3.30	7.28
	2-1/8	211-34												UC211-34			
	2-3/16	211-35												UC211-35			
		UCFL211												UC211			
60	2-1/4	UCFL212-36	9-27/32	7-61/64	1-9/64	23/32	1-7/8	29/32	5-1/2	2-23/32	2.5630	1.0000	3/4	UC212-36	FL212	4.30	9.48
	2-3/8	212-38												UC212-38			
	2-7/16	212-39												UC212-39			
		UCFL212												UC212			
65	2-1/2	UCFL213-40	10-5/32	8-17/64	1-3/16	25/32	1-31/32	29/32	6-3/32	2-3/4	2.5630	1.0000	3/4	UC213-40	FL213	5.40	11.90
		UCFL213												UC213			

2-BOLT FLANGE UNITS

SET SCREW TYPE



UCFT200-SERIES

Shaft Dia.		Unit No.	Dimensions(in.)										Bolt Used in.	Bearing No.	Housing No.	Weight	
mm	in.		a	e	i	g	l	s	b	z	Bi	n				kg	lbs.
12	1/2	UCFT201-8	4-13/32	3-17/32	3/4	7/16	1-5/32	13/32	2-3/8	1-25/32	1.2205	0.5000	5/16	UC201-8	FT204	0.58	1.28
	5/8	202-10												UC201-10			
	3/4	204-12												UC201-12			
		UCFT201												UC201			
15		202		202													
17		203		203													
20		204		204													
25	7/8	UCFT205-14	4-7/8	3-57/64	25/32	17/32	1-7/32	1/2	2-3/4	1-27/32	1.3386	0.5630	3/8	UC205-14	FT205	0.83	1.83
	15/16	205-15												UC205-15			
	1	205-16												UC205-16			
		UCFT205												UC205			
30	1-1/16	UCFT206-17	5-9/16	4-19/32	53/64	17/32	1-11/32	1/2	3-1/4	2	1.5000	0.6260	3/8	UC206-17	FT206	1.05	2.32
	1-1/8	206-18												UC206-18			
	1-3/16	206-19												UC206-19			
	1-1/4	206-20												UC206-20			
		UCFT206												UC206			
35	1-1/4	UCFT207-20	6-1/8	5-1/8	27/32	9/16	1-7/16	35/64	3-3/4	2-1/8	1.6890	0.6890	7/16	UC207-20	FT207	1.57	3.46
	1-5/16	207-21												UC207-21			
	1-3/8	207-22												UC207-22			
	1-7/16	207-23												UC207-23			
	UCFT207	UC207															
40	1-1/2	UCFT208-24	6-3/4	5-21/32	15/16	9/16	1-17/32	35/64	4-1/8	2-5/16	1.9370	0.7480	7/16	UC208-24	FT208	1.97	4.34
	1-9/16	208-25												UC208-25			
		UCFT208												UC208			
45	1-5/8	UCFT209-26	7-1/16	5-27/32	15/16	9/16	1-9/16	5/8	4-3/8	2-5/16	1.9370	0.7480	1/2	UC209-26	FT209	2.32	5.12
	1-11/16	209-27												UC209-27			
	1-3/4	209-28												UC209-28			
		UCFT209												UC209			
50	1-7/8	UCFT210-30	7-7/16	6-3/16	1-1/8	9/16	1-27/32	5/8	4-9/16	2-5/8	2.0315	0.7480	1/2	UC210-30	FT210	2.70	5.95
	1-15/16	210-31												UC210-31			
		UCFT210												UC210			
55	2	UCFT211-32	8-1/2	7-1/4	1-17/64	13/16	1-31/32	45/64	5-1/4	2-31/32	2.1890	0.8740	9/16	UC211-32	FT211	4.06	8.95
	2-1/8	211-34												UC211-34			
	2-3/16	211-35												UC211-35			
		UCFT211												UC211			