

# SPROCKET

# NO.120

## Stock Bore

## 1 1/2" PITCH

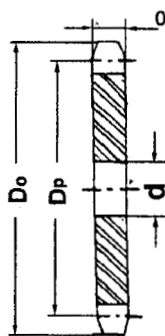
### Single Type-A

No. Teeth	Catalog No.	Outside Dia. Do	Pitch Dia.	Stock Bore d	Weight Lbs.
9	120A9	5.020	4.386	1 1/4	3.0
10	120A10	5.520	4.854	1 1/4	3.8
11	120A11	6.010	5.325	1 1/4	4.9
12	120A12	6.500	5.796	1 1/4	5.8
13	120A13	6.990	6.269	1 1/4	6.7
14	120A14	7.470	6.741	1 1/4	8.0
15	120A15	7.960	7.215	1 1/4	9.1
16	120A16	8.440	7.689	1 1/4	10.6
17	120A17	8.920	8.163	1 1/4	12.6
18	120A18	9.410	8.639	1 1/4	13.6
19	120A19	9.890	9.114	1 1/4	15.1
20	120A20	10.370	9.588	1 1/4	16.9
21	120A21	10.850	10.065	1 1/4	18.7
22	120A22	11.330	10.541	1 1/4	20.0
23	120A23	11.810	11.016	1 1/4	22.1
24	120A24	12.290	11.492	1 1/4	24.8
25	120A25	12.770	11.969	1 1/4	26.6
26	120A26	13.250	12.444	1 1/2	28.3
27	120A27	13.730	12.921	1 1/2	30.9
28	120A28	14.210	13.397	1 1/2	33.6
30	120A30	15.170	14.351	1 1/2	39.0
32	120A32	16.130	15.303	1 1/2	43.9
33	120A33	16.610	15.780	1 1/2	48.2
34	120A34	17.090	16.257	1 1/2	50.0
35	120A35	17.570	16.734	1 1/2	52.0
36	120A36	18.050	17.211	1 1/2	56.0
40	120A40	19.960	19.119	1 1/2	71.0
42	120A42	20.920	20.073	1 1/2	75.0
45	120A45	22.350	21.504	1 1/2	88.0
48	120A48	23.790	22.935	1 1/2	103.0
54	120A54	26.650	25.797	1 1/2	140.0
60	120A60	29.520	28.661	1 1/2	160.0
70	120A70	34.300	33.434	1 1/2	216.0
80	120A80	39.080	38.207	1 1/2	284.0

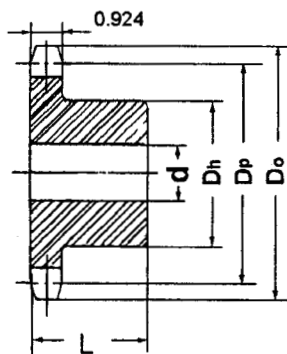
### Single Type-B & C

Catalog No.	Bore: d (inches)		Hub (inches)		Weight Lbs.
	Stock	Rec Max	Dia Dh	LTB. L	
120B9	1 3/8	1 13/16	3 3/8*	2 1/4	5.20
120B10	1 3/8	2 1/4	3 3/4*	2 1/4	7.00
120B11	1 3/8	2 3/8	3 9/16	2 1/8	7.70
120B12	1 3/8	2 3/4	4 1/8	2 1/8	9.80
120B13	1 3/8	3	4 9/16	2 1/4	12.60
120B14	1 3/8	3 1/4	4 3/4	2 1/4	14.30
120B15	1 1/4	3 1/4	4 3/4	2 3/8	16.70
120B16	1 1/4	3 1/2	5 1/4	2 3/8	19.90
120B17	1 1/4	3 1/2	5 1/4	2 3/8	20.80
120B18	1 1/4	3 1/2	5 1/4	2 3/8	22.20
120B19	1 1/4	3 1/2	5 1/4	2 3/8	24.80
120B20	1 1/4	3 1/2	5 1/4	2 3/8	25.80
120B21	1 1/4	3 1/2	5 1/4	2 3/8	27.00
120B22	1 1/4	3 1/2	5 1/4	2 3/8	28.80
120B23	1 1/4	3 1/2	5 1/4	2 3/8	30.60
120B24	1 1/4	3 1/2	5 1/4	2 3/8	33.50
120B25	1 1/4	3 1/2	5 1/4	2 3/8	34.60
120B26	1 1/2	4	6	2 1/2	40.00
120B27	1 1/2	4	6	2 1/2	43.00
120B28	1 1/2	4	6	2 1/2	45.00
120B30	1 1/2	4	6	2 1/2	50.20
120B32	1 1/2	4	6	2 1/2	56.00
120B35	1 1/2	4	6	2 1/2	62.40
120B36	1 1/2	4	6	2 1/2	66.40
120C40	1 1/2	4	6	3 3/4	92.0
120C42	1 1/2	4	6	3 3/4	98.0
120C45	1 1/2	4	6	3 3/4	99.2
120C48	1 1/2	4	6	4	113.0
120C54	1 1/2	4	6	4	133.0
120C60	1 1/2	5 1/4	7	4	160.0
120C70	1 1/2	5 3/8	7 1/2	4 1/2	206.0
120C80	1 1/2	5 3/8	7 1/2	4 1/2	254.0

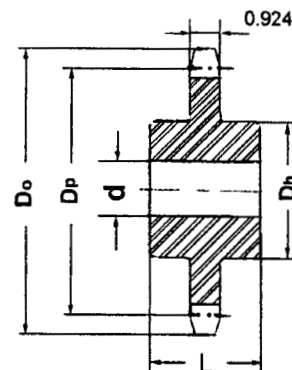
\* Has recessed groove in hub for chain clearance.



Type A



Type B



Type C