



nine 2 five™
USER MANUAL

PIVOT
vapors™

EVOLVE TO LUXURY

Welcome to the world of vaping! We are sure you are as excited about vaping as we are, and all that vaping has to offer.

At PIVOT, we are sticklers for perfection, driven by one basic principle: To create value for our customers. We are confident that our passion, dedication and pursuit of excellence will clearly show through in all our **consumer-centric** products and services.

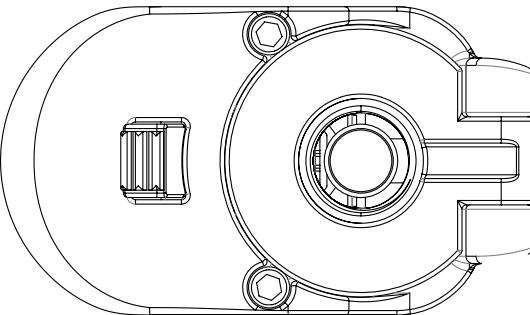
No costs are spared in ANY vertical of our processes, ONLY the BEST materials are used, the latest technologies employed, and countless man-hours spent researching and perfecting every minute aspect.

The labor of love...is there any other kind?! We are hopeful that you will derive as much pleasure in using our products as we do in making them.

Thank you for purchasing a Pivot Vapors Product. Go on, take a hit!!

Queries, questions, concerns?

✉ wecare@pivotvapors.com



"Intelligence is based on how efficient a species became at doing the things they need to survive"

Let's EVOLVE!

- Charles Darwin

Technical Specifications

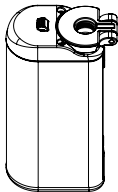
Battery Capacity:	2600 mAh
Voltage Range:	2-8.3V
Wattage Range:	5-40W
Temp Control:	200-600 F
Size:	45 x 25 x 82 mm

Notice of Use

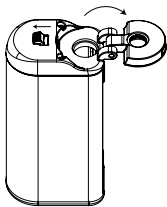
Do take time to read this manual. It will take **ONLY 10 minutes** of your time, but it will ensure that you enjoy your device to the fullest.

Schematic Diagram

Close



Open



← Power Button

← LED

← Increase

← Decrease

Standard Features

Main Display (Wattage OR Temperature Mode):

- Battery Life Indicator.
- Resistance of Coil.
- Voltage/ Wattage Setting.
- OR
- Temperature Setting



Toggle Display:-

- Battery Life Indicator.
- Resistance of Coil.
- Voltage Or Wattage Setting.
- Total Time Vaped since reset.
- Total Puff Count since reset.



To maximize convenience, we have designed a state-of-the-art hinge that allows you to collapse the tank and bring it next to the body of the device. To fold, simply pull the lever back to release lock.



Variable Temperature/Wattage:

You can lower the temperature/wattage in all our devices. Lowering temperature/wattage will decrease the amount of heat of vapor and also the amount of vapor being produced.



Pass-through: All our devices are charged through a Micro USB Port and can be recharged with any standard Micro USB cable. Pass-through means that you can vape WHILE the power unit is being charged!

Settings retention: Our power units remember the last voltage/wattage setting you applied, eliminating the need to set it every time.

Constant power level: Our devices are programmed to not reduce the voltage/wattage setting (aka heat and vapor) just because the battery has low power, thus providing you with a consistent and best experience throughout the day.

10-second cut-off: If the power button remains pressed for more than ten seconds, our devices will automatically stop to ensure safety.



Lock feature: Pressing the increase and decrease button together and holding for 3 seconds will lock the voltage setting.

(Quick Tip: To increase/decrease heat in large increments, use the voltage setting; to increase/decrease heat more accurately, use the wattage setting.)

Total Time Vaped and Total Puff Count:

Press the power button four times in 5 seconds to change the display from Main Display to Toggle Display since.



- **To Reset Total Puff Count** hold the power button and increase button simultaneously for 2 seconds.
- **To Reset Total Minutes Vaped Counter** hold the power button and decrease button simultaneously for 2 seconds.

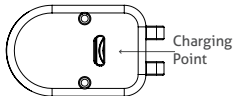
TIP: To return to Main Display, press the power button 4 times in 5 seconds.

Assembling Device

Let's start with the basics, how to assemble your tank.

Power Unit

Although our units come charged, it is advisable to charge your battery for a few hours before first use.



How To Use

There are three main buttons on the Nine 2 Five model:
Power Button, Increase Button, and Decrease Button.

Using these three buttons can activate all functions of the device.

Turn on/off:

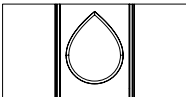
Click the power button 5 times within a span of 7 seconds to turn your device on or off.

Main Screen/Toggle Screen:

Press the power button 4 times within a span of 7 seconds to view the different displays.

Temperature Control Mode to Wattage Mode:

Click the power button 3 times within a span of 5 seconds to view change from temperature control mode to wattage mode.



To Use:

- a) Inhale SLOWLY. You do not need to apply too much force as vapor is already being produced on pressing the button.

- b) Inhale smaller puffs than you normally would. In just 2 seconds of vaping you inhale a higher quantity of vapor as compared to cigarette smoke. Vapor is much lighter than smoke.
- c) Vapor is very light because it does NOT have any toxic chemicals, whereas cigarettes have 4000 chemicals, and these chemicals increase the weight of smoke.
- d) Inhaling too much vapor at one time may cause condensation of vapor in your throat, thereby causing you to cough.

Remember that you are NOT coughing due to throat damage from harsh chemicals like those found in cigarette smoke.

All devices will stop producing vapor after 10 seconds of holding the button as a protection mechanism.

Increase/Decrease Wattage/Temperature:

To increase the wattage/temperature (heat/vapor), press the Increase Button. To decrease the voltage (heat/vapor), press the Decrease Button.

Wattage/temperature can be increased **only** when LED Screen is set to Main Display.

Voltage/Wattage Settings:

Set the wattage of the device according to your user preference of how hot and how much vapor you want. **Ensure, you do not set wattage to more than Maximum Tank operating wattage ability. (Refer to tank manual).**

How To Hold

- There can be many comfortable ways to hold your device, find the way most suited to you! If you think you have stumbled upon a cool new way to vape, then upload your picture on our social platform to win a free gift.
facebook.com/pivotvapors.

Tell us your experience! We would love to hear from you!

✉ wecare@pivotvapors.com

Troubleshooting

TEMP. PROTECTION ACTIVATES TOO OFTEN

1. Turn off device.
2. Release hinge to detach tank
3. Return hinge to closed position.
4. Turn on device.
5. Press (up) for new coil.

LEAKAGE

1. Open the tank and check if the coil is screwed tightly to the tank base.
2. In some tank models, the tank opens from both sides. Make sure both sides are tightly shut.
3. If you can taste the E-Juice while inhaling, then check if you have overfilled the tank or filled liquid in the center chamber by accident *(If you have, simply clean the mouth piece and the center tunnel using a tissue paper.)*

BURNT TASTE

1. If you did NOT wet the coil before first use, then it is possible that you have burnt the coil. Take a new coil and make sure you wet the coil before first use.
2. If you have been using the device for a while, then it is possible that it may be time to replace your coil. The lifespan of a coil is between 10-15 days, depending on usage.
- 3 Make sure your tank has enough E-Liquid.
4. **Ensure that you aren't using a higher voltage than the tank's operating capability.** *For more information on this, refer to the manual that came with the tank.*

LESS VAPOR

1. Unscrew the tank from the battery. (Be careful not to unscrew the tank base from the tank as that will lead to spilling of E-Juice).
2. Clean the contact point of tank and battery with a tissue.
3. Clean the mouth piece and the center tunnel using a tissue paper.
4. Check to see if the voltage is too low and increase if necessary.

"No Coil" Indication or Not Firing:

- Open the tank and tighten the coil into the base.
- Clean the contact point of the battery and tank well.
- If this doesn't work then try replacing the coil.
- Check to see if your power unit is charged.

"Coil Low" Indication:

- Open the tank and tighten the coil into the base.
- Make sure the tank is also tightened into the battery.
- If this doesn't work then try replacing the coil.

If any problem continues to persist despite the steps mentioned above, then please contact Pivot at [✉wecare@pivotvapors.com](mailto:wecare@pivotvapors.com)

Warning !

- Our Products are NOT TO BE used by anyone under the age of 18, women who are pregnant or breastfeeding, people with or at risk of heart disease, or people taking medication for depression or asthma.
- This unit may include small parts, please keep out of the reach of children and pets.
- Please obey local laws or regulations while vaping. If there are any bans or potential dangers, please keep the device off.

Refund/Returns

We want you to enjoy your device. If you are not satisfied for any reason, we offer a 15 days, “no questions asked” return policy on the power unit and tank.

Warranty

We also offer a 6 months limited warranty on our devices.

Damage caused due to negligence or abuse will not be covered under the warranty.



storme™
USER MANUAL

PIVOT
vapors™

EVOLVE TO LUXURY

Welcome to the world of vaping! We are sure you are as excited about vaping as we are, and all that vaping has to offer.

At PIVOT, we are sticklers for perfection, driven by one basic principle: To create value for our customers. We are confident that our passion, dedication and pursuit of excellence will clearly show through in all our **consumer-centric** products and services.

No costs are spared in ANY vertical of our processes, ONLY the BEST materials are used, the latest technologies employed, and countless man-hours spent researching and perfecting every minute aspect.

The labor of love...is there any other kind?! We are hopeful that you will derive as much pleasure in using our products as we do in making them.

Thank you for purchasing a Pivot Vapors Product. Go on, take a hit!!

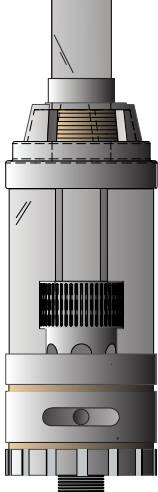
Queries, questions, concerns?

✉ wecare@pivotvapors.com

“Intelligence is based on how efficient a species became at doing the things they need to survive”

- Charles Darwin

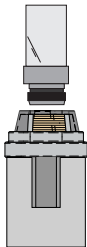
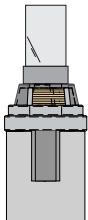
Let's EVOLVE!



Technical Specifications

Tank Capacity:	4.5ml
Tank Construction:	Stainless Steel 304 and Pyrex Glass
Tank Size:	Ø22mm * 72.5mm
Coil Type:	Organic Cotton Coil: BVC, BDC, and RBA

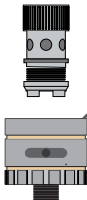
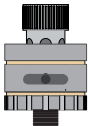
Schematic Diagram



Mouth Piece

Tank Cap

Glass Tube



Coil

Rubber Ring

Tank Base

Airflow
Control
Valve

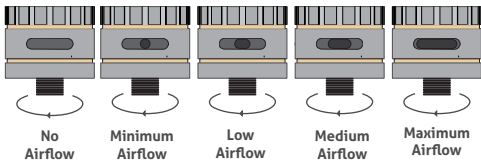
Standard Features

Adjustable airflow

Less Airflow: Harder pull (more effort), higher heat, less flavor intensity, smaller cloud size, and apt for mouth hits.

More Airflow: Easier to pull (less effort), lower heat, more flavor intensity, larger cloud size, and apt for deep and lung filling hits.

Zero Airflow: Completely closing the airflow will eliminate the flow of vapor.

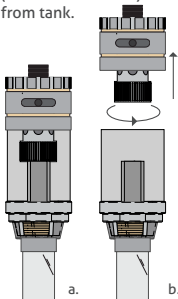


Assembling Device

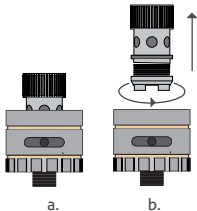
Let's start with the basics, how to assemble your tank.

Tank Unit

1. Unscrew the tank base (counter clockwise) from tank.

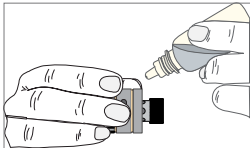


- 2.



Unscrew the coil (counter clockwise) from the tank base.

3. Slowly drop about 3-4 drops of Pivot E-Juice on the coil to soak the internal cotton (if visible) and external cotton holes. Only do this step if your coil is brand new.

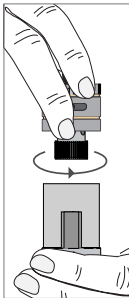


- a. *The goal is to soak the cotton completely before the FIRST use.*
- b. *The coil will need be replaced every few days, depending on usage.*
- c. *You will know it's time to replace if your flavor starts to taste like ash!
(Refer to trouble shooting and tips on "Burnt Taste")*

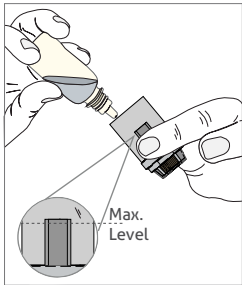
4. Screw the soaked coil into base, ensuring it is tight.

5. To fill

- a. To avoid spilling, invert the tank so the mouthpiece is pointing downwards, then unscrew the base counter-clockwise.

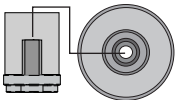


- b. Fill the tank with Pivot E-Juice by pouring the juice into the tank at an angle.



- c. Ensure you do not overfill the tank! Every tank has a different maximum level.

d. Do not pour E-Juice into the center vapor chamber



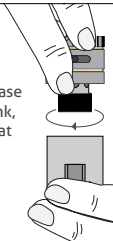
7. If needed clean the outside and specially the bottom of the tank with a tissue.

8. Screw the tank (clockwise) onto the power unit.

9. If you are using a new coil then wait 1-2 mins before using, then inhale 5 times before turning on the power unit, to completely soak the coil.

Note: While cleaning the tank, please do not lose the rubber ring that resides at the bottom of the tank.

6. Screw the base onto the tank, ensuring that it is tight.



Write to us at

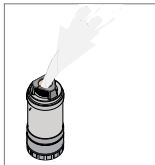
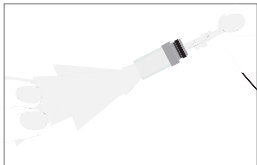
✉ wecare@pivotvapors.com
and tell us your experience!

We would love to hear from you!

Troubleshooting

LEAKAGE

1. Open the tank and check if the coil is screwed tightly to the tank base.
2. In some tank models, the tank opens from both sides. Make sure both sides are tightly shut.
3. If you can taste E-Juice while inhaling then check if you have overfilled the tank or filled liquid in the center chamber by accident.



BURNT TASTE

1. If you did NOT wet the coil before first use, then it is possible that you have burnt the coil. Take a new coil and make sure you wet the coil before first use (instructions on page 8).
2. If you have been using the device for a while, then it is possible that it may be time to replace your coil. The lifespan of a coil is a few days, depending on usage.
3. Make sure your tank has enough E-Juice.

4. **Ensure that you aren't using a higher voltage than the tank's operating capability.**

For more information on this, refer to the technical specifications in this manual.

LESS VAPOR

1. Unscrew the tank from the battery. (Be careful not to unscrew the tank base from the tank as that will lead to spilling of E-Juice).
2. Clean the contact point of the tank and battery with a tissue.
3. Clean the mouth piece and the center tunnel using a tissue paper.

4. Check to see if the voltage is low and increase if necessary.

"No Coil" Indication or Not Firing:

- Open the tank and tighten the coil into the base.
- Clean the contact point of the battery and tank well.
- If this doesn't work then try replacing the coil.
- Check to see if your power unit is charged.

"Coil Low" Indication:

- Open the tank and tighten the coil into the base.
- Make sure the tank is also tightened into the battery.
- If this doesn't work then try replacing the coil.

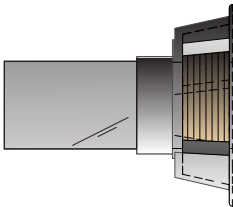
If any problem continues to persist despite the steps mentioned above, then please contact Pivot at [✉ wecare@pivotvapors.com](mailto:wecare@pivotvapors.com)

Warning !

- Our Products are NOT TO BE used by anyone under the age of 18, women who are pregnant or breastfeeding, people with or at risk of heart disease, or people taking medication for depression or asthma.
- This unit may include small parts, please keep out of the reach of children and pets.
- Please obey local laws or regulations while vaping. If there are any bans or potential dangers, please keep the device off.

Refund/Returns

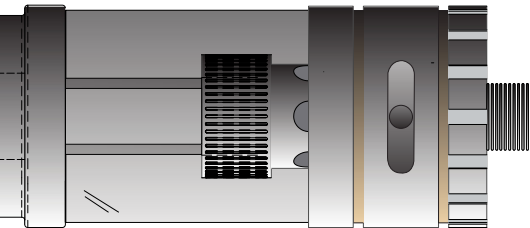
We want you to enjoy your device. If you are not satisfied for any reason, we offer a 15 days, "no questions asked" return policy on the power unit and tank.




Warranty

We also offer a 6 months limited warranty on our devices.

Damage caused due to negligence or abuse will not be covered under the warranty.



Copyright © Pivot Vapors
All Rights Reserved.

✉ wecare@pivotvapors.com  facebook.com/pivotvapors