

# Click'n Go

## W906 Sprinter USA Click'n Go Adapter

Works with MBProg Programmer. No soldering required.

Mercedes Sprinter, Dodge Sprinter and Freightliner Sprinter 2007-2016.

EIS with 9S12 Motorola processor.

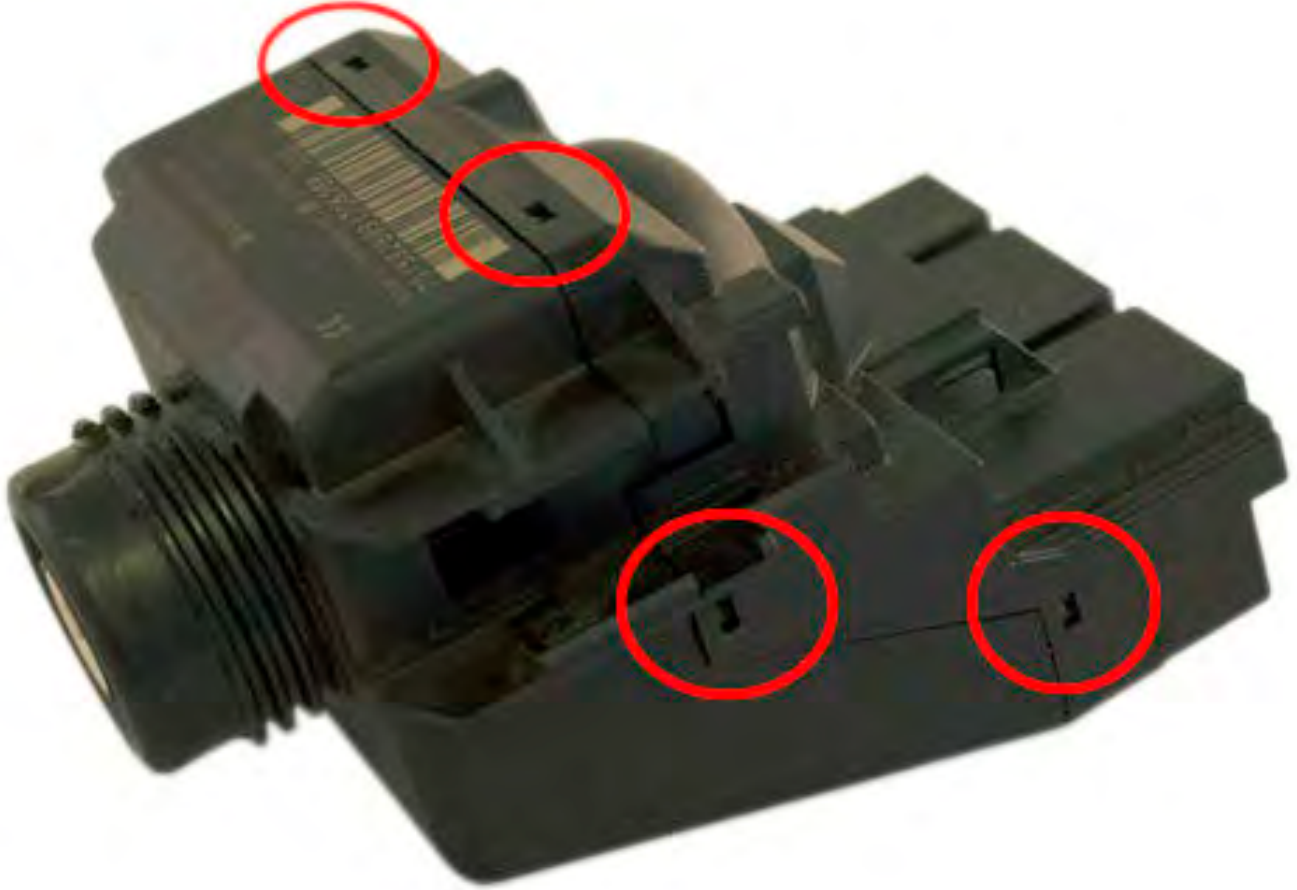


# W906 Sprinter USA



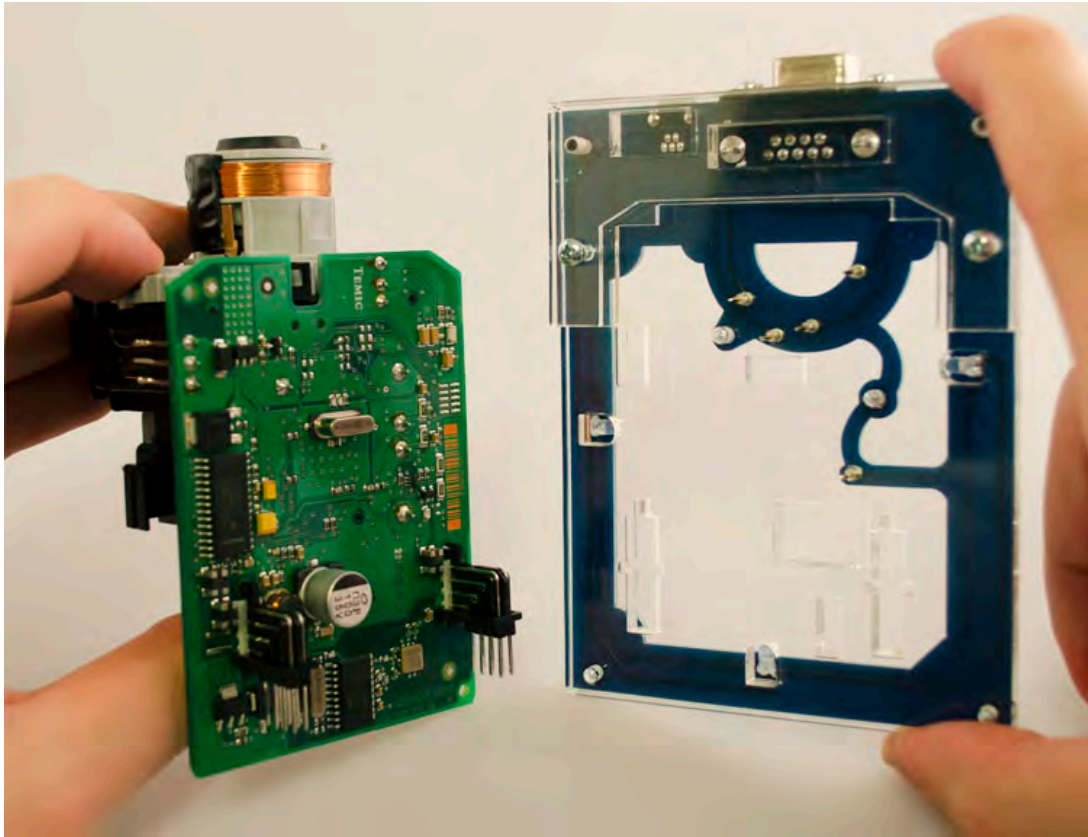
## How to connect the EIS

Carefully open by pushing in the EIS back body tabs.

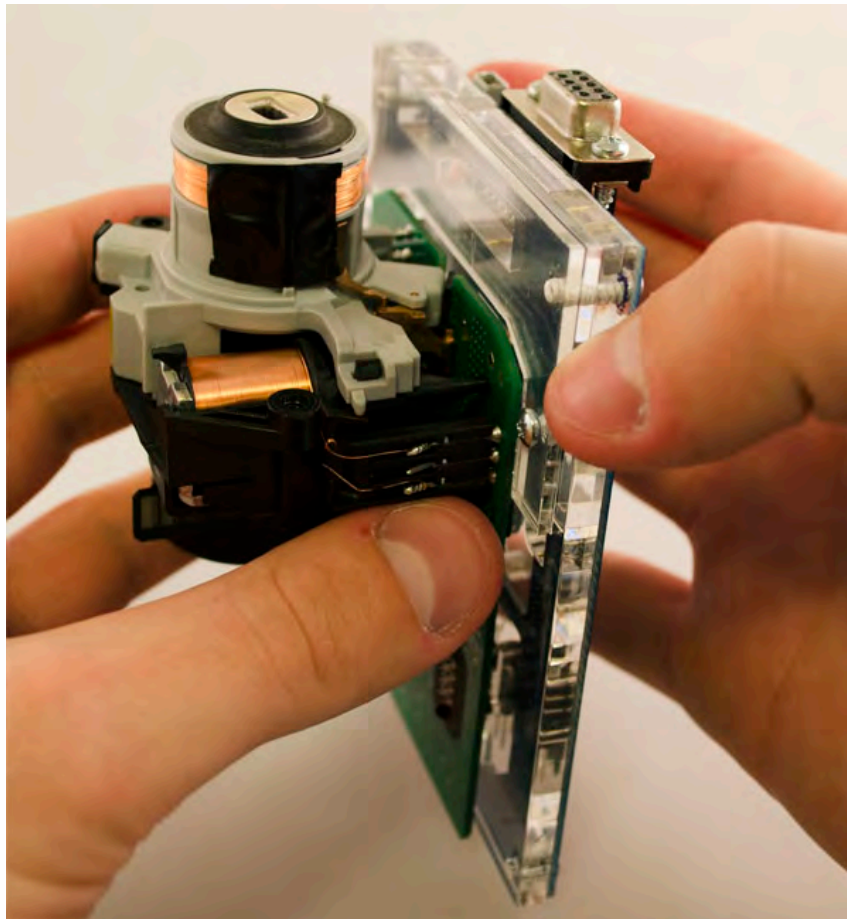


# W906 Sprinter USA

Match the top of the EIS board with top of Click'n Go adapter.

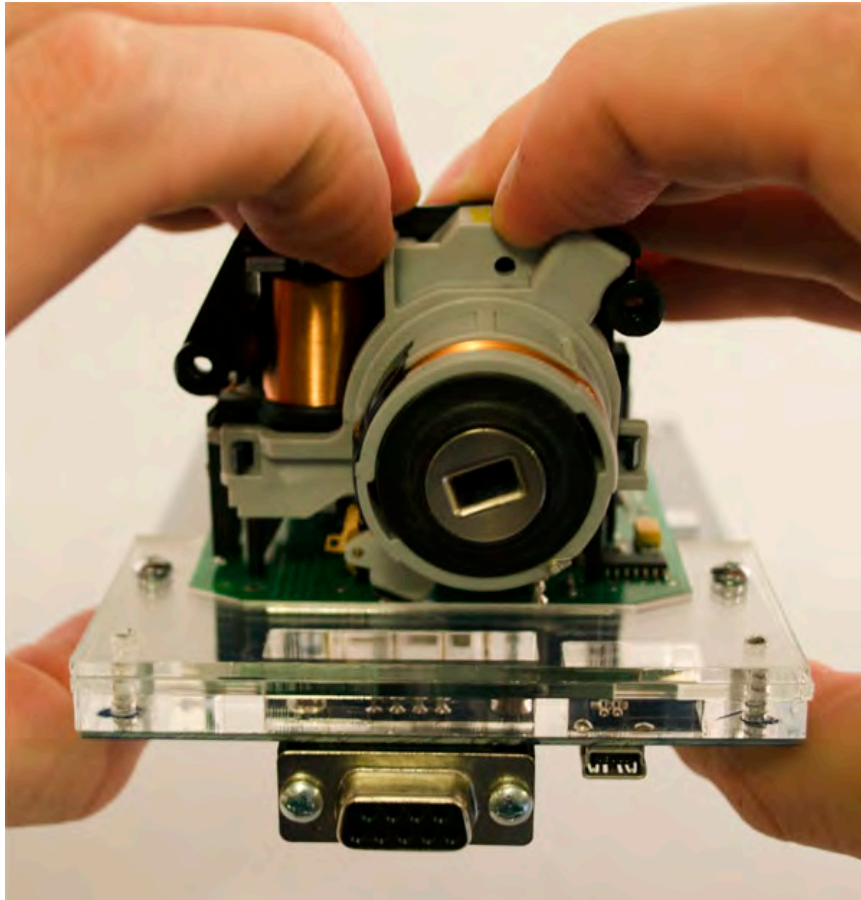


Mount the EIS board on the Click'n Go adapter.

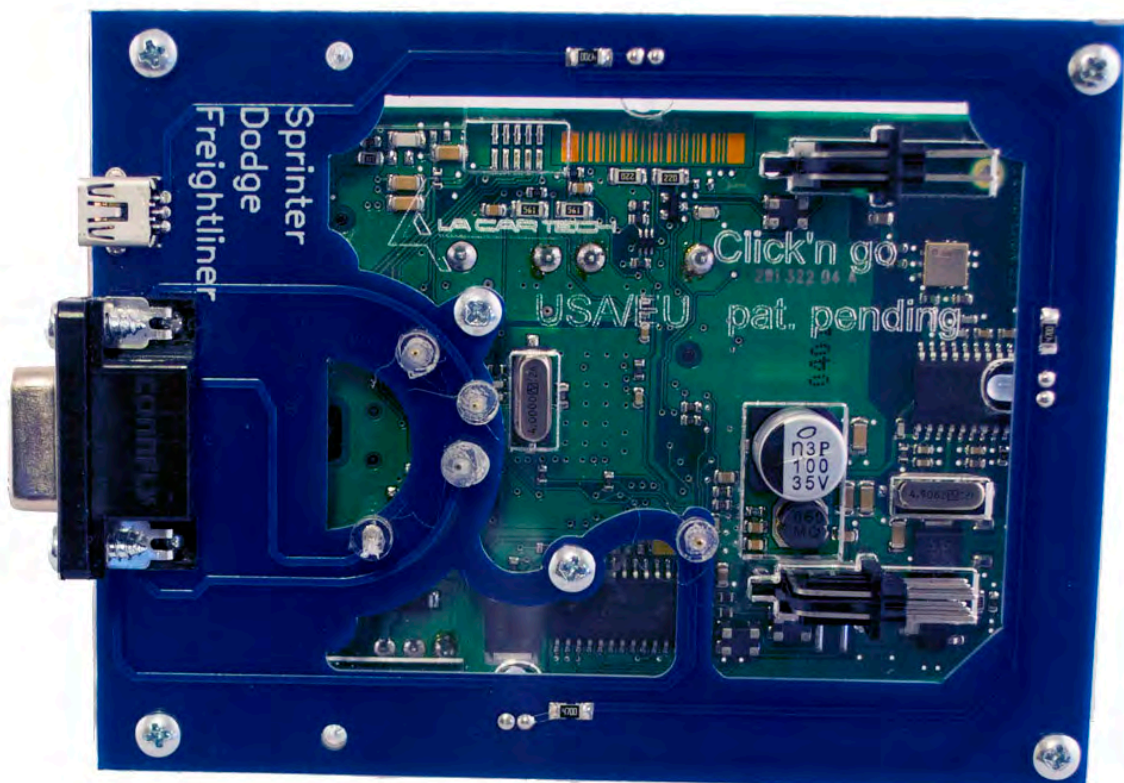


# W906 Sprinter USA

Carefully push down the EIS into Click'n Go adapter.



Make sure that Click'n Go adapter is mounted correctly on the EIS.

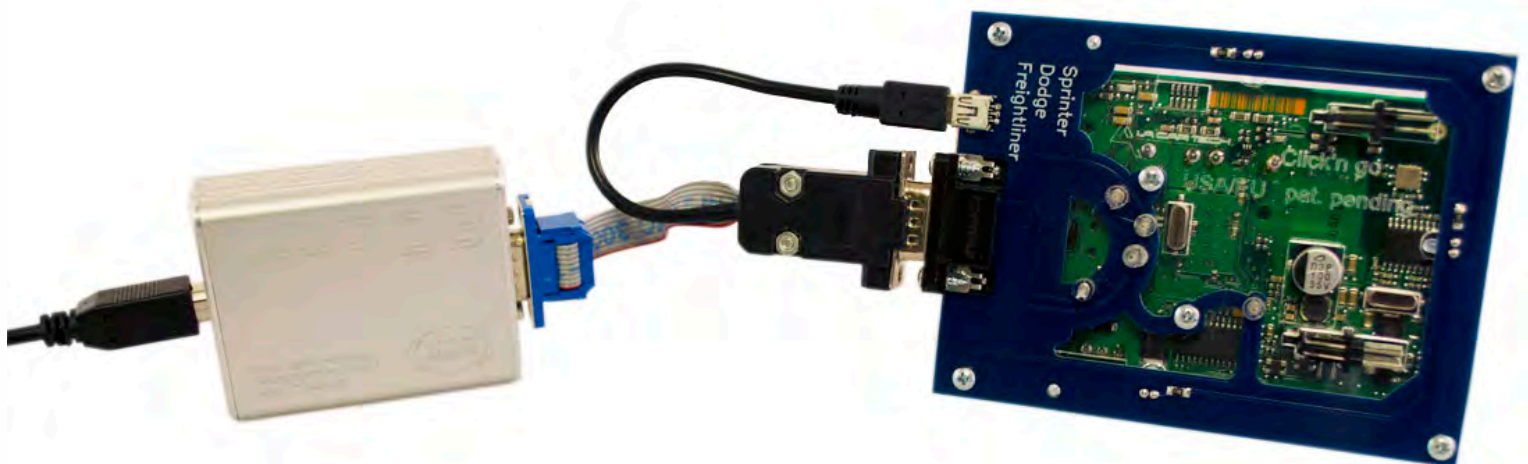


# W906 Sprinter USA

Connect both cables to Click'n Go adapter.



Connect MBProg 2 Click'n Go cable to MBProg.  
Connect USB cable to MBProg and PC.



# W906 Sprinter USA

## How to read

- Open MBProg software.
- Check bottom right corner if your device is correctly connected.
- Now click on Chip button.

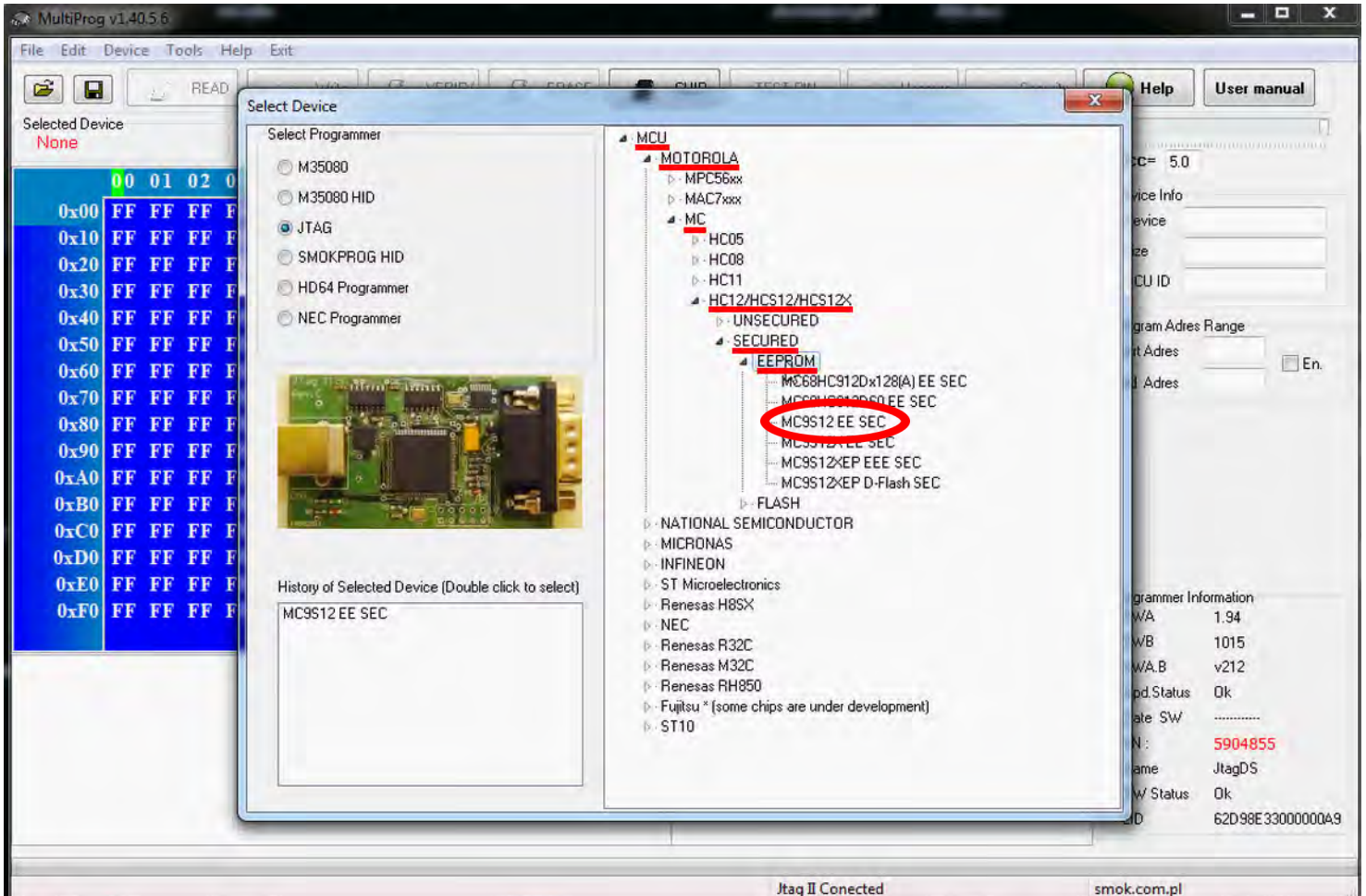
The screenshot shows the MultiProg v1.40.5.6 software interface. The 'CHIP' button in the top toolbar is circled in red. The main window displays a memory dump table with columns for hexadecimal addresses (00-0F) and alphanumeric characters (0-9, A-F). The data in the table consists of 'FF' values. On the right side, the 'Programmer Information' panel is highlighted with a red box, showing the following details:

Programmer Information	
SWA	1.94
SWB	1015
SWA.B	v212
Upd.Status	Ok
Date SW	-----
SN :	5904855
Name	JtagDS
HW Status	Ok
LID	62D98E3300000A

At the bottom of the window, the status bar indicates 'Jtag II Conected' and 'smok.com.pl'.

# W906 Sprinter USA

Make sure that JTAG is selected in programmer software.  
Select MOTOROLA > MC > HC12/HCS12/HCS12X > SECURED > EEPROM  
and double click on MC9S12 EE SEC option as seen in the red circle.







# W906 Sprinter USA

The EIS reading process is done.  
If you can see VIN# it has been read correctly.

MultiProg v1.40.5.6

File Edit Device Tools Help Exit

READ Write VERIFY ERASE CHIP TEST PIN Usecure Security Help User manual

Selected Device: MC9S12 EE SEC

00	01	02	03	04	05	06	07	08	09	0A	0B	0C	0D	0E	0F	01	2	3	4	5	6	7	8	9	A	B	C	D	E	F
0x000	00	5A	FF	FF	15	08	FF	FF	05	66	FF	FF	6D	01	FF	FF	Z	.	8	.	.	.	.	.	.	.	.	.	.	.
0x010	12	06	FF	FF	20	FF	FF	FF	FF	FF	FF	FF	FF	FF	FF	FF	.	.	.	.	.	.	.	.	.	.	.	.	.	.
0x020	03	0F	FF	FF	FF	FF	FF	FF	00	1F	FF	FF	00	00	FF	FF	.	.	.	.	.	.	.	.	.	.	.	.	.	.
0x030	FF	FF	FF	FF	10	FF	FF	FF	43	B1	FF	FF	C4	43	FF	FF	.	.	.	.	.	.	.	.	.	.	.	.	.	.
0x040	B1	C4	FF	FF	43	B1	FF	FF	C4	FF	FF	FF	FF	FF	FF	FF	.	.	.	.	.	.	.	.	.	.	.	.	.	.
0x050	78	72	FF	FF	22	85	FF	FF	FF	FF	FF	FF	57	44	FF	FF	x	.	.	.	.	.	.	.	.	.	.	.	.	.
0x060	33	50	FF	FF	45	38	FF	FF	43	43	FF	FF	37	43	FF	FF	3	.	.	.	.	.	.	.	.	.	.	.	.	.
0x070	35	37	FF	FF	32	32	FF	FF	35	38	FF	FF	36	FF	FF	FF	5	.	.	.	.	.	.	.	.	.	.	.	.	.
0x080	01	FF	FF	FF	FF	FF	FF	FF	FF	FF	FF	FF	FF	FF	FF	FF	.	.	.	.	.	.	.	.	.	.	.	.	.	.
0x090	FF	FF	FF	FF	FF	FF	FF	FF	FF	FF	FF	FF	FF	FF	FF	FF	.	.	.	.	.	.	.	.	.	.	.	.	.	.
0x0A0	FF	FF	FF	FF	FF	FF	FF	FF	FF	FF	FF	FF	FF	FF	FF	FF	.	.	.	.	.	.	.	.	.	.	.	.	.	.
0x0B0	FF	FF	FF	FF	FF	FF	FF	FF	FF	FF	FF	FF	FF	FF	FF	FF	.	.	.	.	.	.	.	.	.	.	.	.	.	.
0x0C0	FF	FF	FF	FF	FF	FF	FF	FF	FF	FF	FF	FF	FF	FF	FF	FF	.	.	.	.	.	.	.	.	.	.	.	.	.	.
0x0D0	FF	FF	FF	FF	FF	FF	FF	FF	FF	FF	FF	FF	FF	FF	FF	FF	.	.	.	.	.	.	.	.	.	.	.	.	.	.
0x0E0	FF	FF	FF	FF	00	00	FF	FF	01	FF	FF	FF	FF	FF	FF	FF	.	.	.	.	.	.	.	.	.	.	.	.	.	.
0x0F0	FF	FF	FF	FF	FF	FF	FF	FF	FF	FF	FF	FF	FF	FF	FF	FF	.	.	.	.	.	.	.	.	.	.	.	.	.	.
0x100	6C	40	FF	FF	80	58	FF	FF	F0	25	FF	FF	A3	E4	FF	FF	!	.	.	.	.	.	.	.	.	.	.	.	.	.

Read EE MC9S12 EE SEC  
Read ID MCU ok  
MCU ID :0033  
Memory Config :2581  
Unsecuring...  
f=136, t1=163, t2=23  
Unsecure Ok  
Reading EE MC9S12 Secured...  
Read OK  
Saved backup File : C:\Users\PatrykMBE\Documents\Temp\Temp3.bin

Device Info  
Vcc= 5.0  
Device: 9s12DG256  
Size: 4096  
MCU ID: 0033

Program Adres Range  
Start Adres: 000000  
End Adres: 000FFF

Programmer Information  
SWA: 1.94  
SWB: 1015  
SWA.B: v212  
Upd Status: Ok  
Date SW: .....  
SN: 5904855  
Name: JtagDS  
HW Status: Ok  
LID: 62D98E3300000A9

Read OK Jtag II Conected smok.com.pl