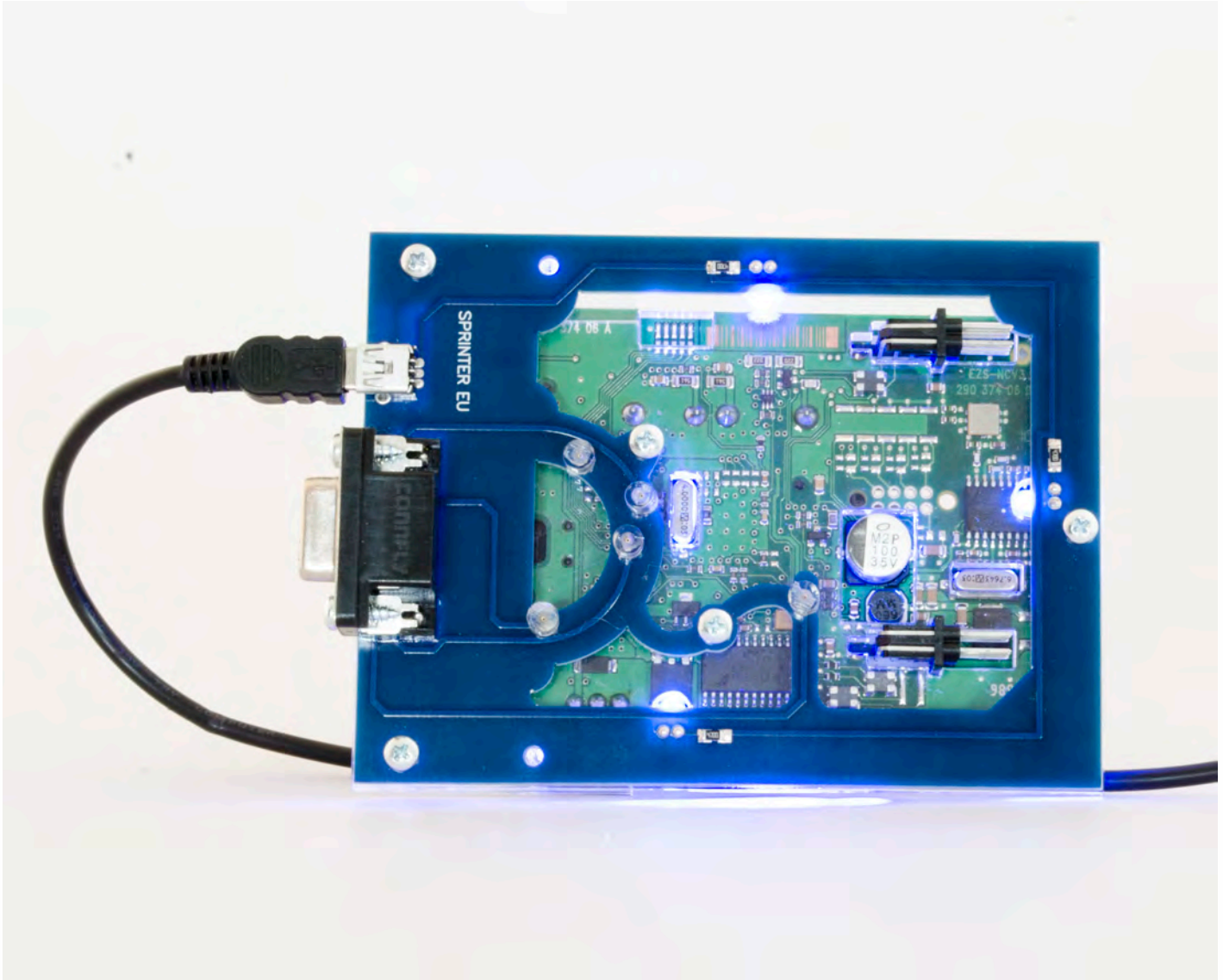


Click'n Go



W906 Sprinter EU Click'n Go Adapter
Works with MBProg Programmer. No soldering required.
EIS with 9S12 Motorola processor.



W906 Sprinter EU



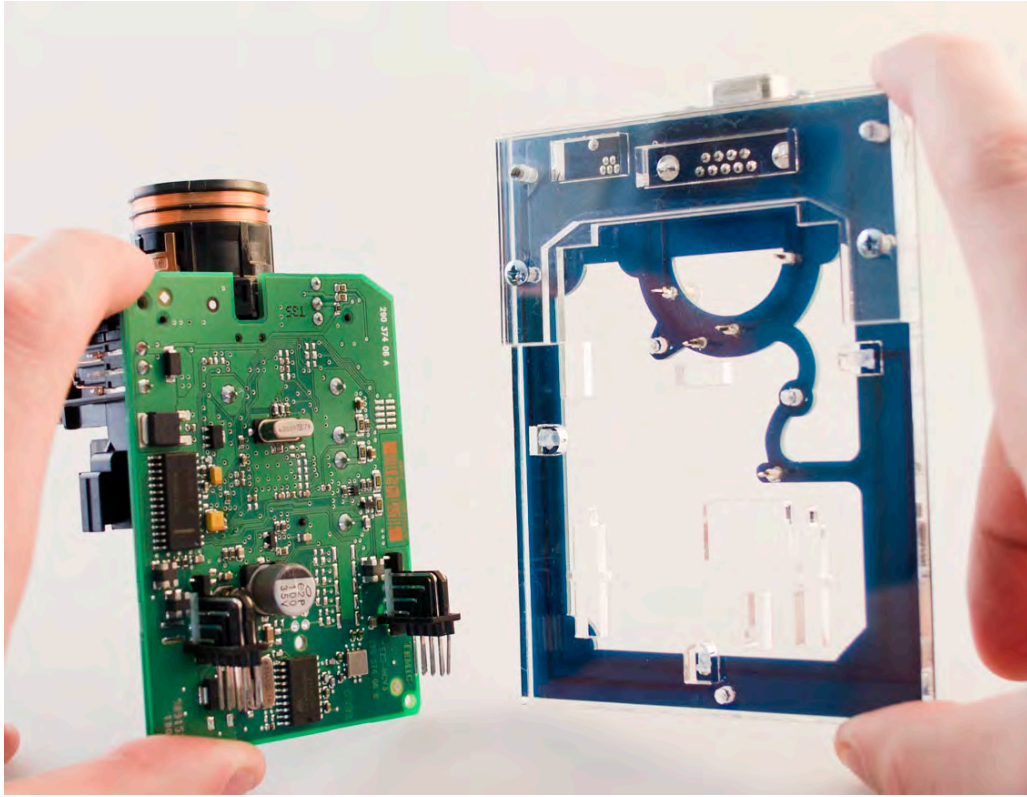
How to connect the EIS

Carefully open by pushing in the EIS back body tabs.

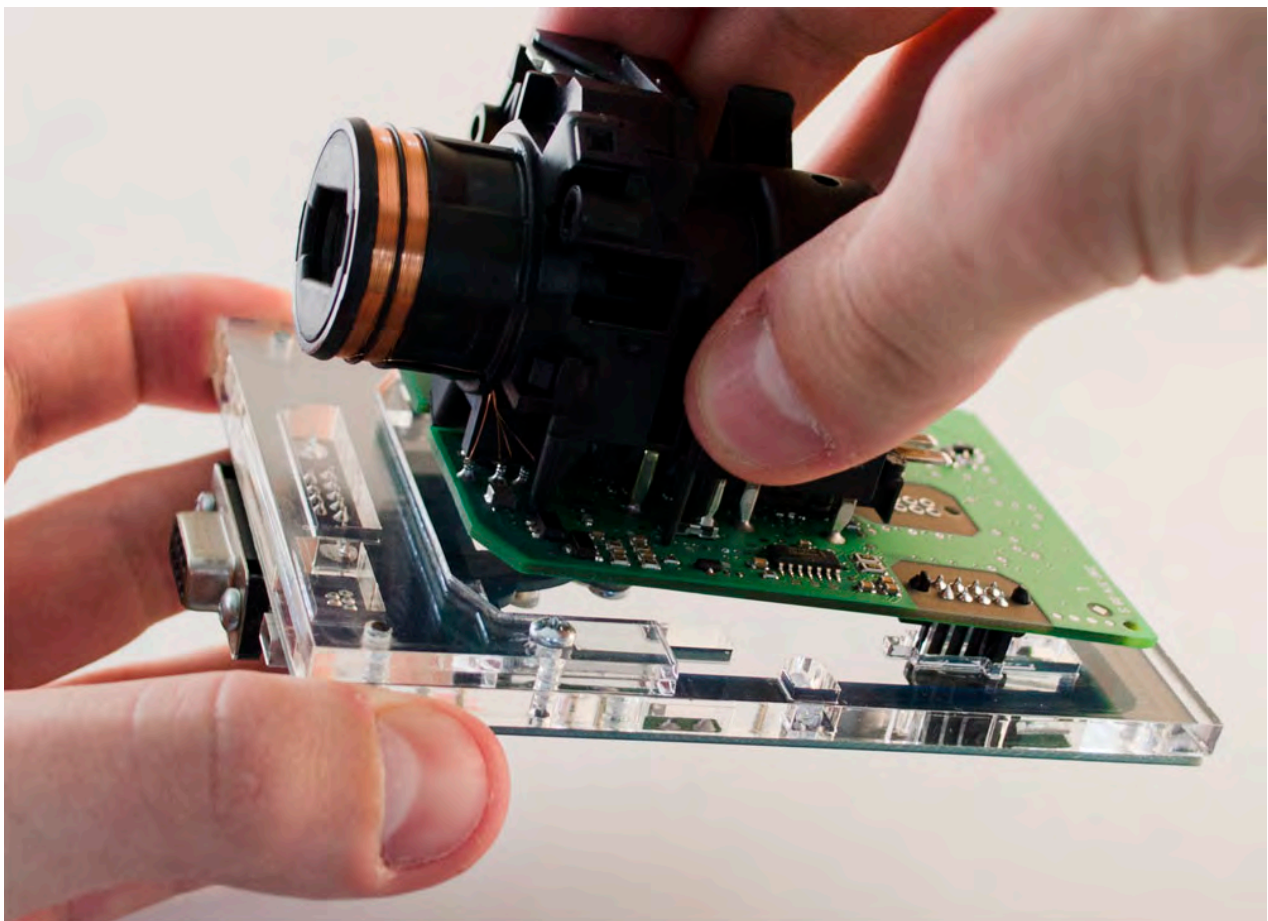


W906 Sprinter EU

Match the top of the EIS board with top of Click'n Go adapter.

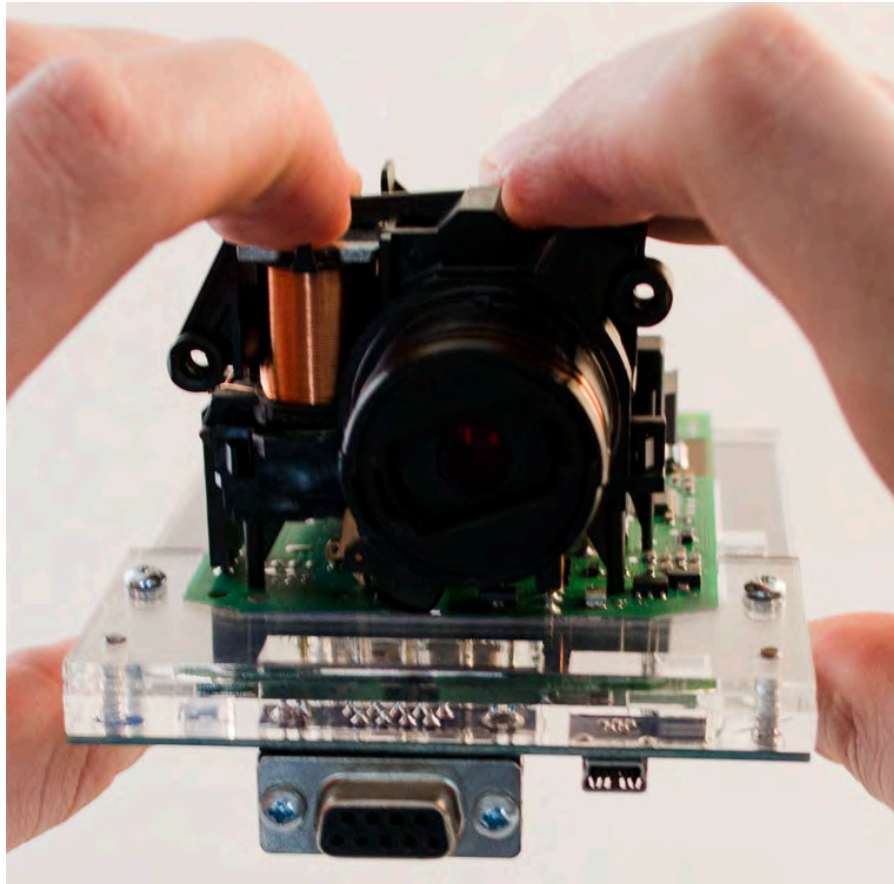


Mount the EIS board on the Click'n Go Adapter.

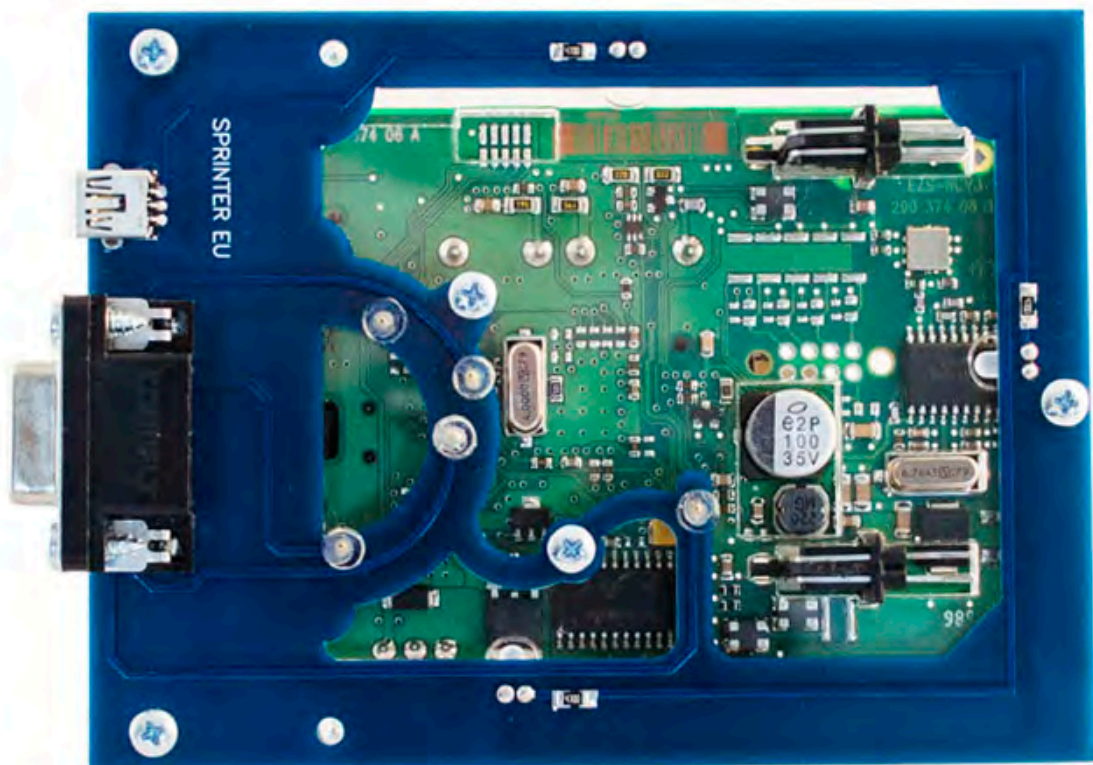


W906 Sprinter EU

Carefully push down the EIS on to Click'n Go adapter.

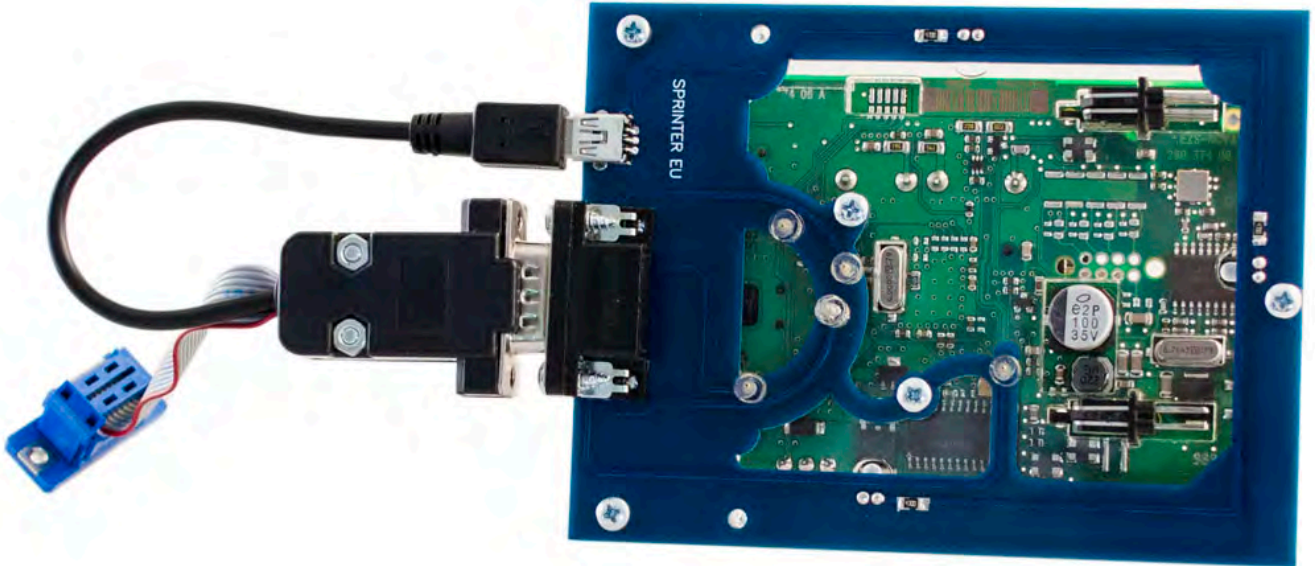


Make sure that Click'n Go adapter is mounted correctly on the EIS.

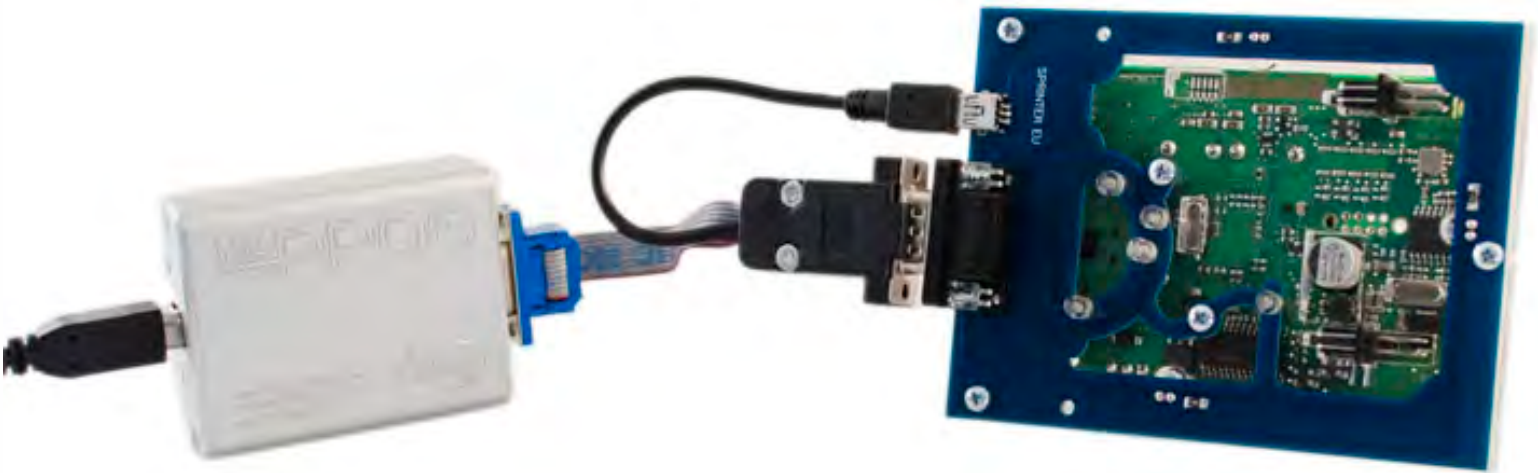


W906 Sprinter EU

Connect both cables to Click'n Go adapter.



Connect MBProg 2 Click'n Go cable to MBProg.
Connect USB cable to MBProg and PC.



W906 Sprinter EU

How to read

Open MBProg software.

Check bottom right corner if your device is correctly connected.

Now click Chip button.

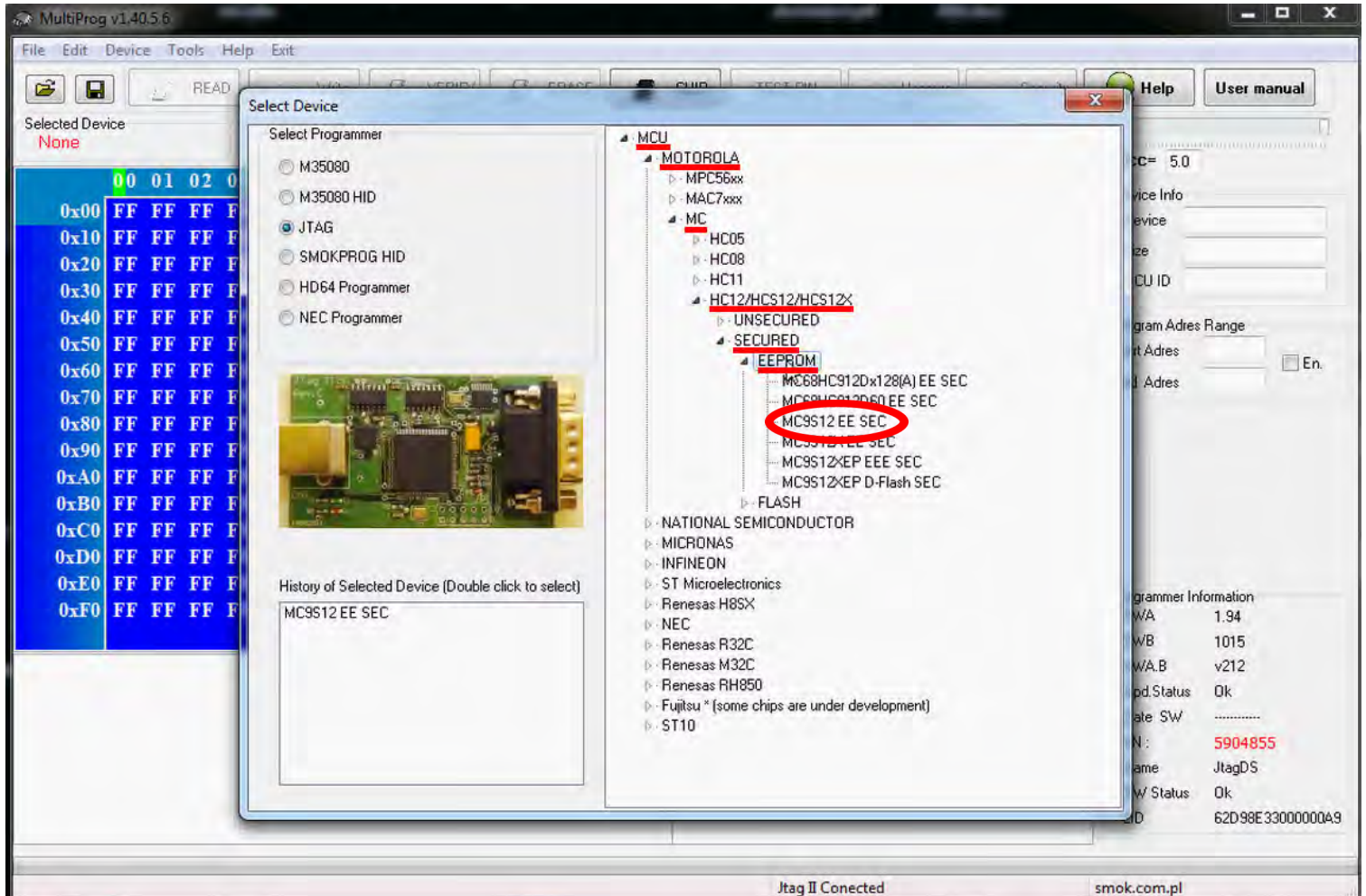
The screenshot shows the MultiProg v1.40.5.6 software interface. The 'CHIP' button in the top toolbar is circled in red. The main window displays a memory dump with addresses from 0x00 to 0xF0 and hex values, mostly 'FF'. The bottom right corner features a 'Programmer Information' panel, also circled in red, which displays the following details:

Programmer Information	
SWA	1.94
SWB	1015
SWA.B	v212
Upd.Status	Ok
Date SW	-----
SN :	5904855
Name	JtagDS
HW Status	Ok
LID	62D98E33000000A

At the bottom of the window, the status bar shows 'Jtag II Connected' and 'smok.com.pl'.

W906 Sprinter EU

Make sure that JTAG is selected in programmer software.
Select MOTOROLA > MC > HC12/HCS12/HCS12X > SECURED > EEPROM
and double click on MC9S12 EE SEC option as seen in the red circle.



W906 Sprinter EU

Now click on Read button.

The screenshot shows the MultiProg v1.40.5.6 software interface. The 'Read' button, represented by a green upward-pointing arrow, is circled in red. The main window displays a memory dump for the selected device 'MC9S12EE SEC'. The memory dump shows addresses from 0x000 to 0x100, with each address followed by 16 hexadecimal values (FF FF FF FF FF FF FF FF FF FF FF FF FF FF FF). The right-hand panel contains various settings and information:

- Vcc= 5.0
- Device Info: Device, Size, MCU ID
- Program Adres Range: Start Adres 000000, End Adres 0007FF, En.
- Programmer Information: SWA 1.94, SWB 1015, SWA.B v212, Upd.Status Ok, Date SW -----, SN: 5904855, Name JtagDS, HW Status Ok, LID 62D98E33000000A9

At the bottom of the window, the status bar shows 'Jtag II Conected' and the website 'smok.com.pl'.

W906 Sprinter EU

The EIS reading process is done.
If you can see VIN# it has been read correctly.

MultiProg v1.40.5.6

File Edit Device Tools Help Exit

READ Write VERIFY ERASE CHIP TEST PIN Usecure Security Help User manual

Selected Device
MC9S12 EE SEC

00	01	02	03	04	05	06	07	08	09	0A	0B	0C	0D	0E	0F	0123456789ABCDEF	
0x000	00	5A	FF	FF	07	04	FF	FF	7F	9E	FF	FF	96	00	FF	FF	Z.....I.....K.....
0x010	07	10	FF	FF	29	FF	FF	FF	FF	FF	FF	FF	FF	FF	FF	FF)
0x020	0B	0F	FF	FF	FF	FF	FF	FF	04	00	FF	FF	A1	00	FF	FF
0x030	02	FF	FF	FF	10	FF	FF	FF	1F	85	FF	FF	C4	1F	FF	FF
0x040	85	C4	FF	FF	1F	85	FF	FF	C4	FF	FF	FF	FF	FF	FF	FF
0x050	00	71	FF	FF	74	61	FF	FF	FF	FF	FF	FF	57	44	FF	FFWD.....
0x060	42	39	FF	FF	30	36	FF	FF	36	33	FF	FF	35	31	FF	FF	B9...06...63...51...
0x070	53	32	FF	FF	35	32	FF	FF	32	30	FF	FF	33	FF	FF	FF	S2...52...20...3...
0x080	00	FF	FF	FF	0F	FF	FF	FF	FF	FF	FF	FF	FF	FF	FF	FF
0x090	00	FF	FF	FF	FF	FF	FF	FF	FF	FF	FF	FF	FF	FF	FF	FF
0x0A0	FF	FF	FF	FF	FF	FF	FF	FF	FF	FF	FF	FF	FF	FF	FF	FF
0x0B0	FF	FF	FF	FF	FF	FF	FF	FF	FF	FF	FF	FF	FF	FF	FF	FFI.....
0x0C0	FF	FF	FF	FF	FF	FF	FF	FF	FF	FF	FF	FF	FF	FF	FF	FF
0x0D0	FF	FF	FF	FF	FF	FF	FF	FF	FF	FF	FF	FF	FF	FF	FF	FF
0x0E0	FF	FF	FF	FF	00	00	FF	FF	00	FF	FF	FF	FF	FF	FF	FF
0x0F0	FF	FF	FF	FF	FF	FF	FF	FF	FF	FF	FF	FF	FF	FF	FF	FF
0x100	8F	FF	FF	FF	00	FF	FF	FF	4B	ED	FF	FF	FB	A5	FF	FFK.....

Read EE MC9S12 EE SEC
Read ID MCU ok
MCU ID :0033
Memory Config :2581
Unsecuring...
f=136, t1=44, t2=27
Unsecure Ok
Reading EE MC9S12 Secured..
Read OK
Saved backup File : C:\Users\PatrykMBE\Documents\Temp\Temp18.bin

Read OK Jtag II Connected smok.com.pl