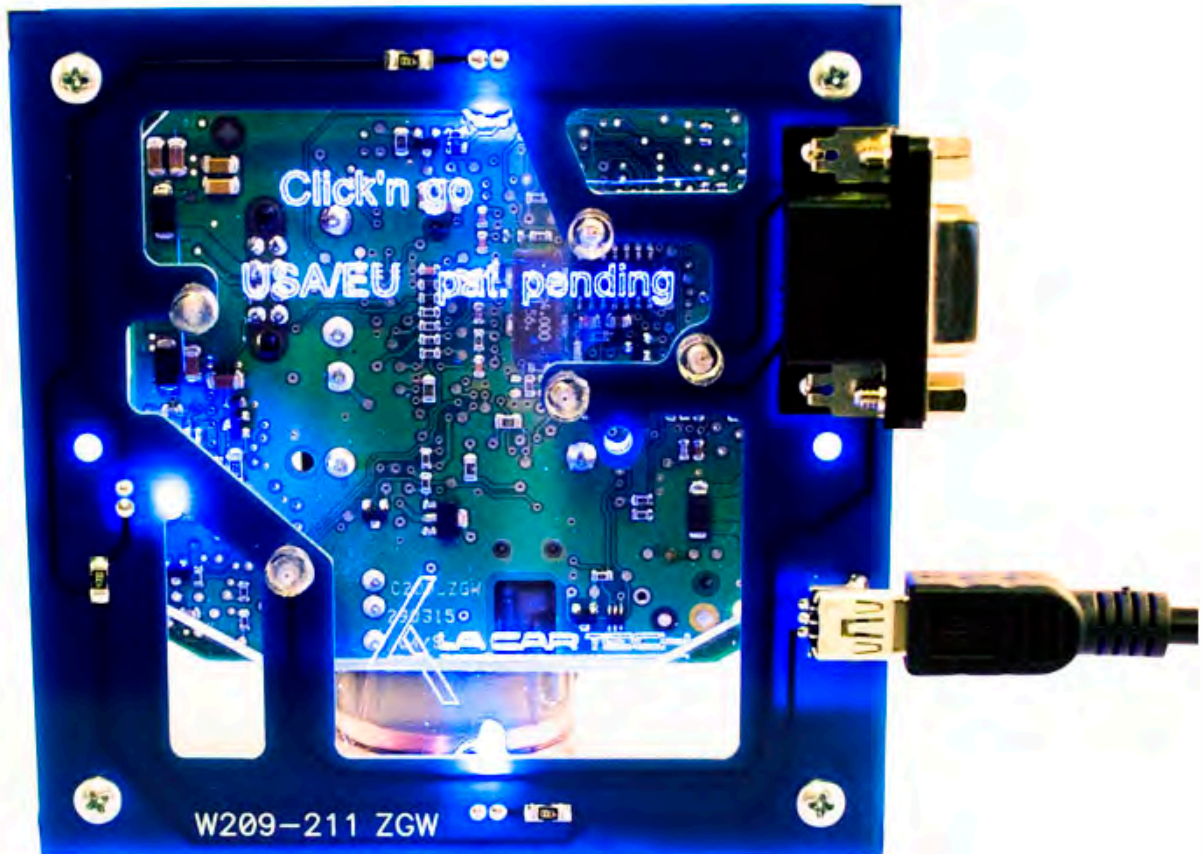


Click'n Go

W209-211 ZGW Click'n Go Adapter

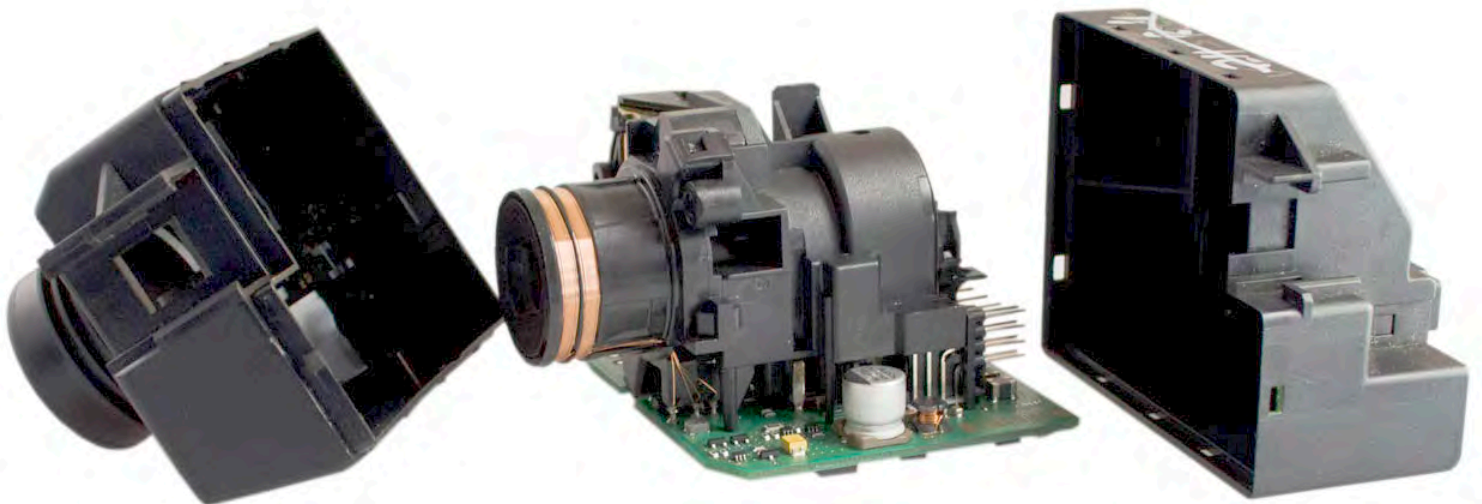
Works with MBProg Programmer. No soldering required.
EIS with 9S12 Motorola processor.



Check the PCB, in the yellow circle you will see what type of MCU you are working with. To use this Click'n Go adapter be sure you see C209_ZGW.

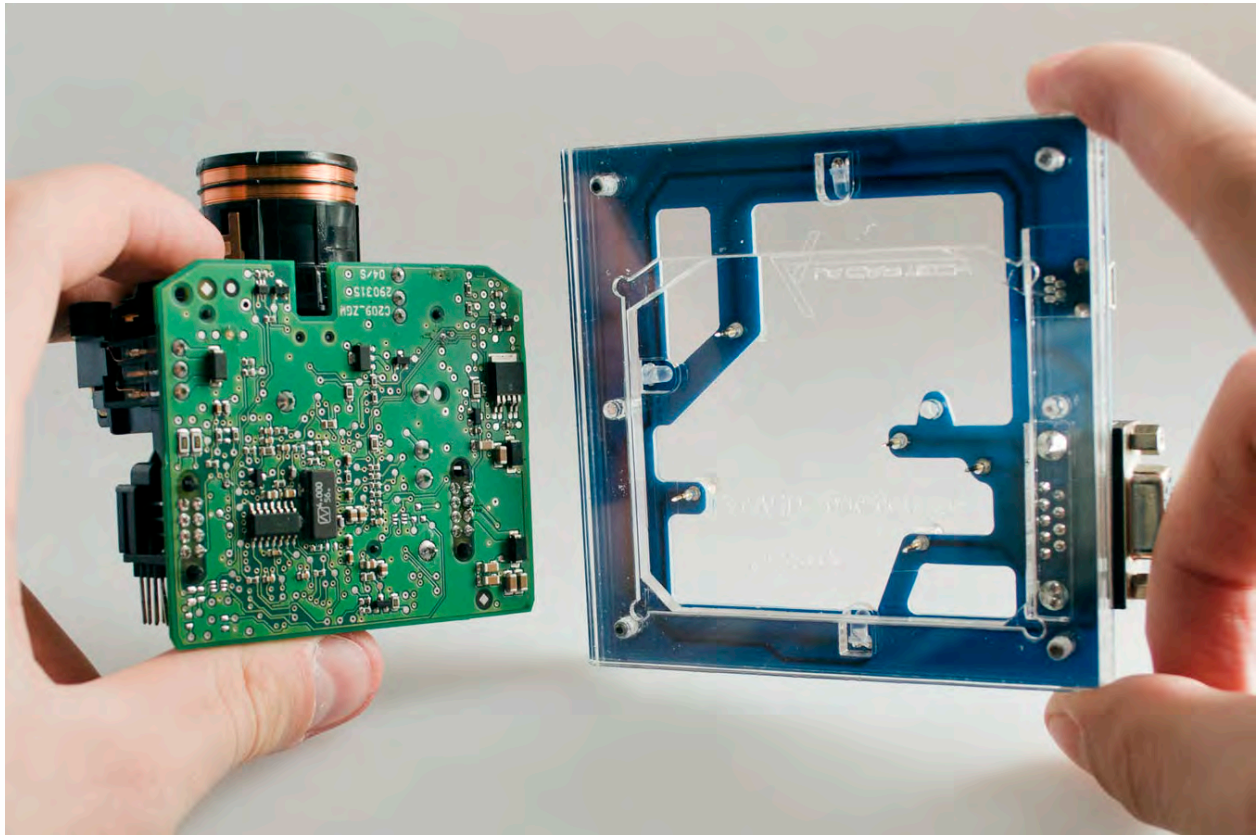
W209/W211 ZGW

How to connect
Carefully open by pushing in the EIS back body tabs.

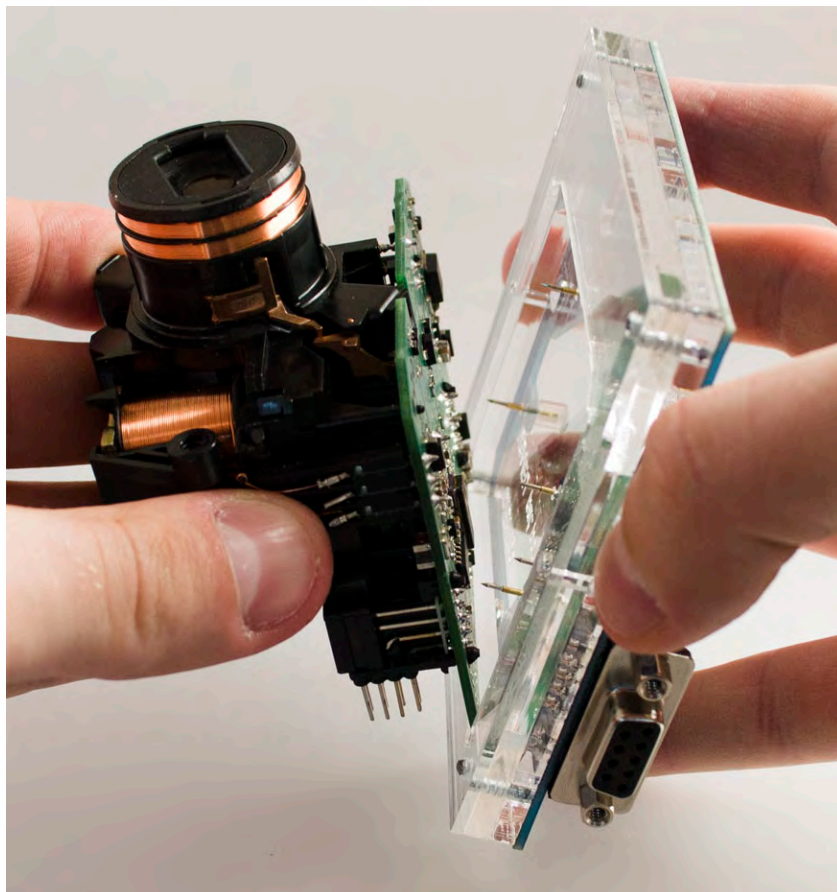


W209/W211 ZGW

Match the top of the EIS board with top of Click'n Go adapter.

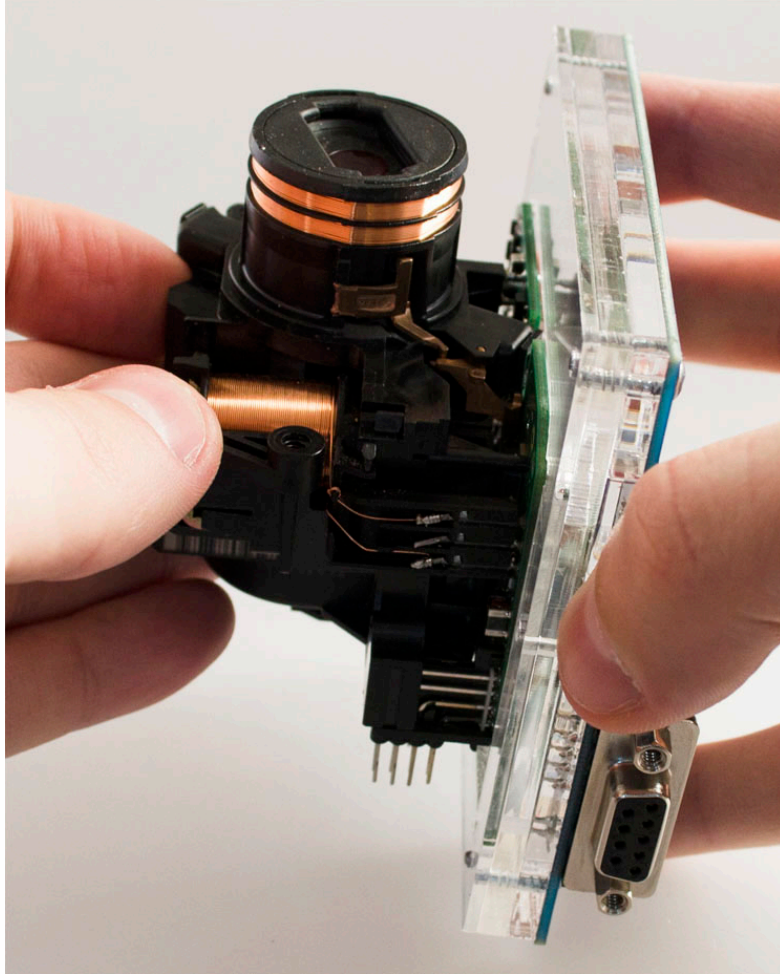


Carefully put the bottom of EIS into Click'n Go adapter.

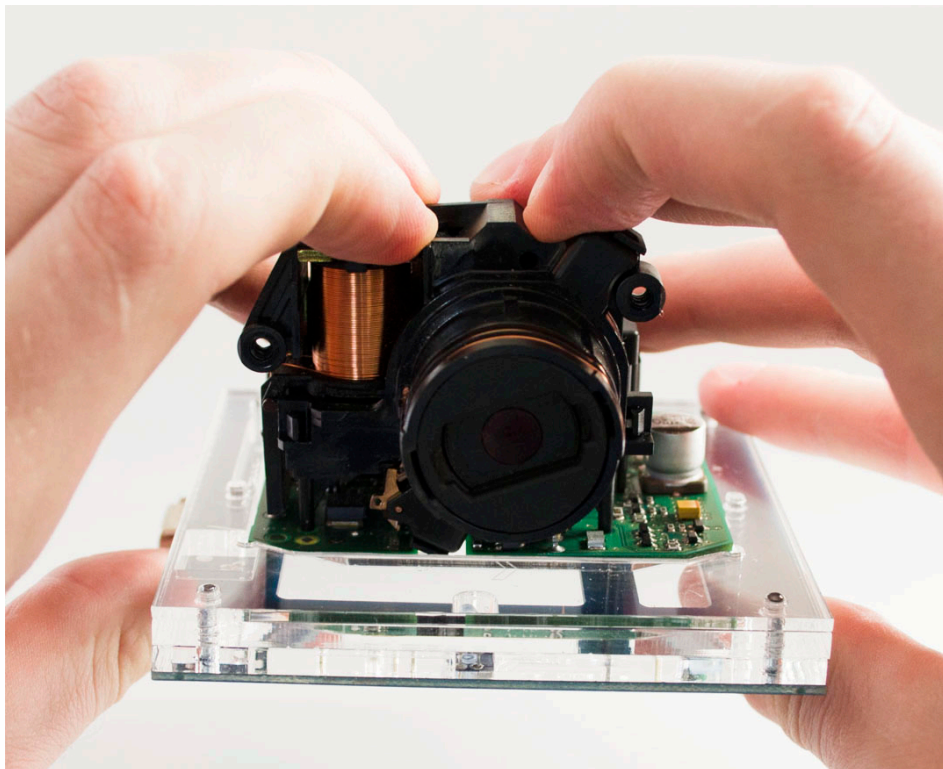


W209/W211 ZGW

Mount the EIS board on the Click'n Go Adapter.

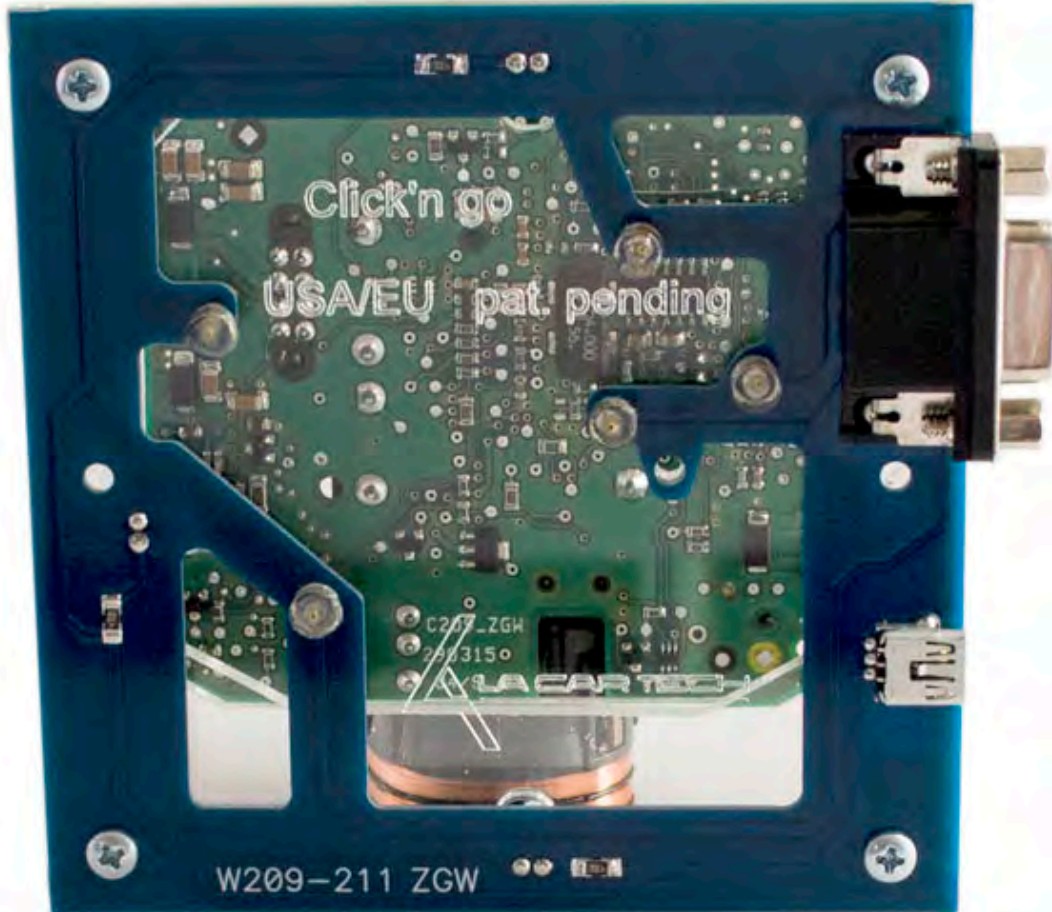


Carefully push down the EIS on to Click'n Go adapter.

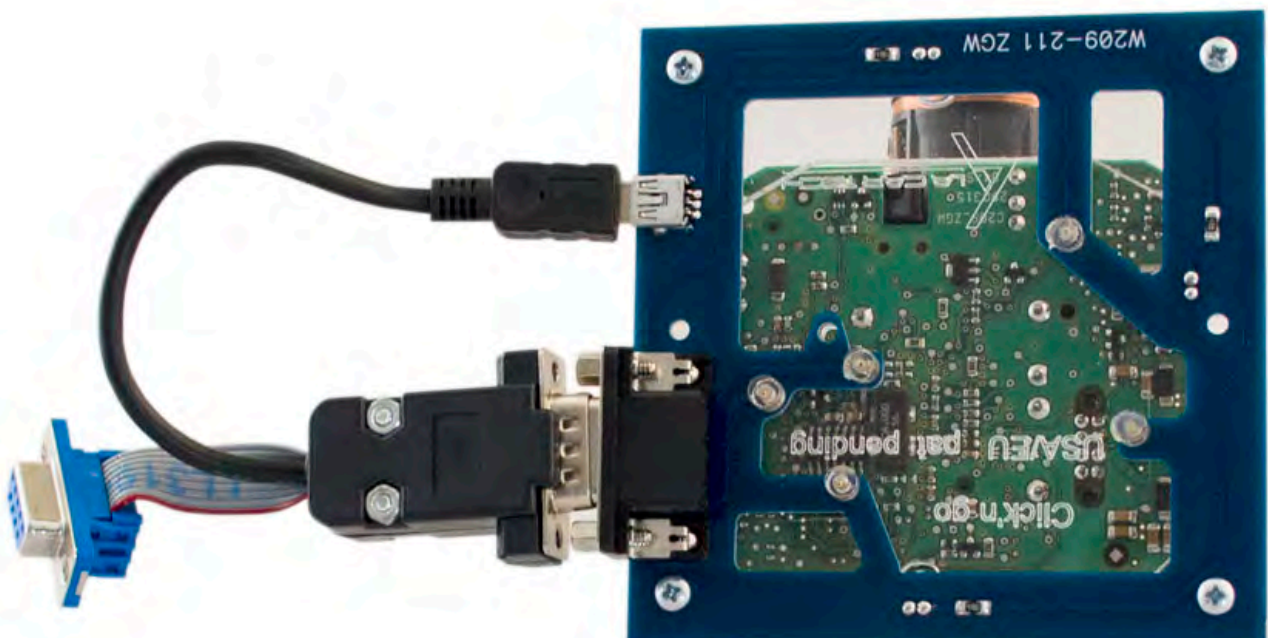


W209/W211 ZGW

Make sure that Click'n Go adapter is mounted correctly on the EIS.

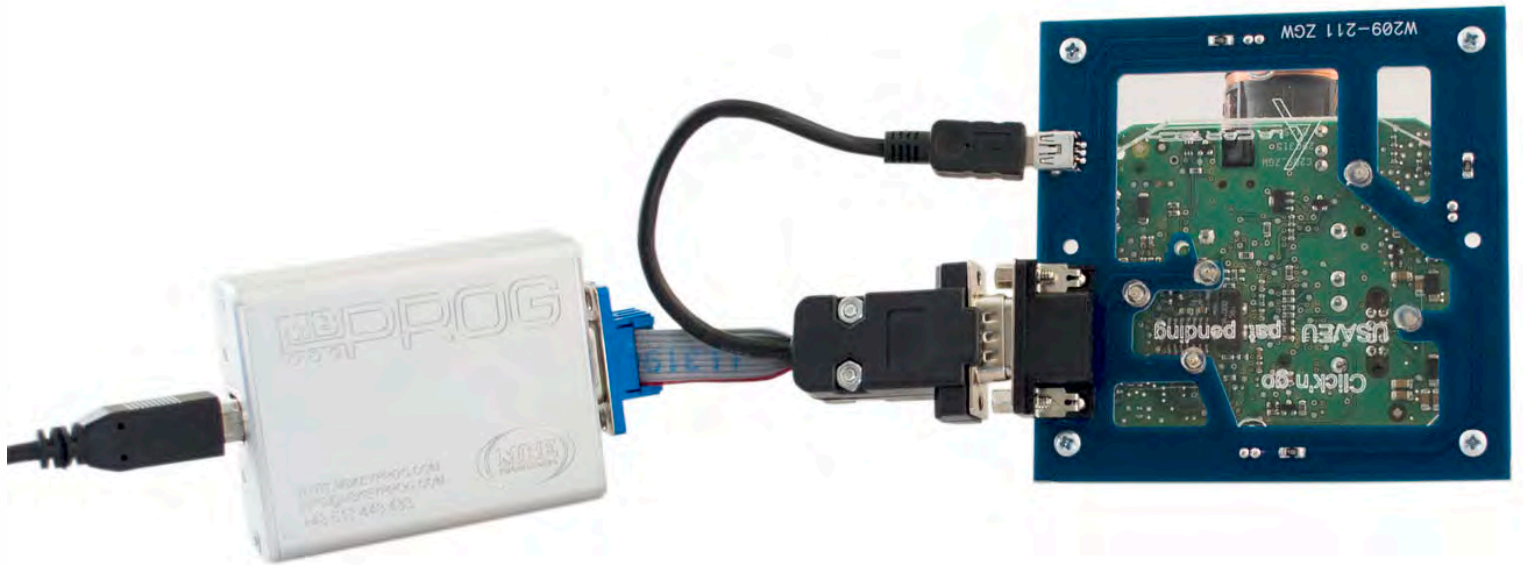


Connect both cables to Click'n Go to adapter.



W209/W211 ZGW

Connect MBProg 2 Click'n Go cable to MBProg.
Connect USB cable to MBProg and PC.



W209/W211 ZGW

How to read

- Open MBProg software.
- Check bottom right corner if your device is correctly connected.
- Now click Chip button.

The screenshot shows the MultiProg v1.40.5.6 software interface. The 'CHIP' button in the top toolbar is circled in red. The main window displays a memory dump table with addresses from 0x00 to 0xF0 and data values mostly 'FF'. The 'Programmer Information' panel in the bottom right is also highlighted in red, showing details for the connected device.

00	01	02	03	04	05	06	07	08	09	0A	0B	0C	0D	0E	0F	0123456789ABCDEF
0x00	FF	FF	FF	FF	FF	FF	FF	FF	FF	FF	FF	FF	FF	FF	FF
0x10	FF	FF	FF	FF	FF	FF	FF	FF	FF	FF	FF	FF	FF	FF	FF
0x20	FF	FF	FF	FF	FF	FF	FF	FF	FF	FF	FF	FF	FF	FF	FF
0x30	FF	FF	FF	FF	FF	FF	FF	FF	FF	FF	FF	FF	FF	FF	FF
0x40	FF	FF	FF	FF	FF	FF	FF	FF	FF	FF	FF	FF	FF	FF	FF
0x50	FF	FF	FF	FF	FF	FF	FF	FF	FF	FF	FF	FF	FF	FF	FF
0x60	FF	FF	FF	FF	FF	FF	FF	FF	FF	FF	FF	FF	FF	FF	FF
0x70	FF	FF	FF	FF	FF	FF	FF	FF	FF	FF	FF	FF	FF	FF	FF
0x80	FF	FF	FF	FF	FF	FF	FF	FF	FF	FF	FF	FF	FF	FF	FF
0x90	FF	FF	FF	FF	FF	FF	FF	FF	FF	FF	FF	FF	FF	FF	FF
0xA0	FF	FF	FF	FF	FF	FF	FF	FF	FF	FF	FF	FF	FF	FF	FF
0xB0	FF	FF	FF	FF	FF	FF	FF	FF	FF	FF	FF	FF	FF	FF	FF
0xC0	FF	FF	FF	FF	FF	FF	FF	FF	FF	FF	FF	FF	FF	FF	FF
0xD0	FF	FF	FF	FF	FF	FF	FF	FF	FF	FF	FF	FF	FF	FF	FF
0xE0	FF	FF	FF	FF	FF	FF	FF	FF	FF	FF	FF	FF	FF	FF	FF
0xF0	FF	FF	FF	FF	FF	FF	FF	FF	FF	FF	FF	FF	FF	FF	FF

Programmer Information

SWA	1.94
SWB	1015
SWA.B	v212
Upd.Status	Ok
Date SW
SN :	5904855
Name	JtagDS
HW Status	Ok
LID	62D98E33000000A

W209/W211 ZGW

Make sure that JTAG is selected in programmer software.
Select MOTOROLA > MC > HC12/HCS12/HCS12X > SECURED > EEPROM
and double click on MC9S12 EE SEC option as seen in the red circle.

