

Click'n Go

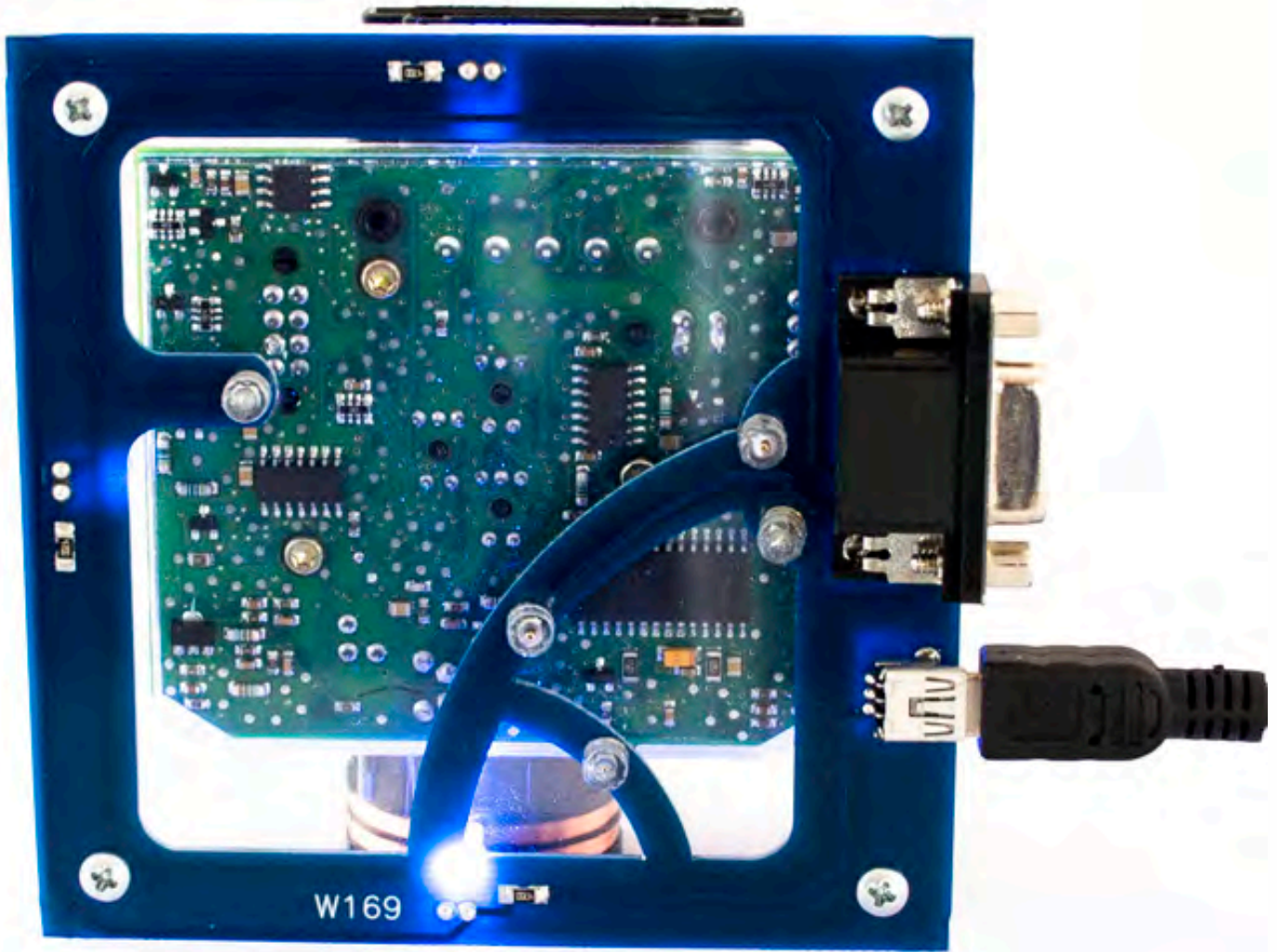


W169 Click'n Go Adapter

Works with MBProg Programmer. No soldering required.

A-Class, B-Class.

EIS with Motorola 9S12 processor.



W169



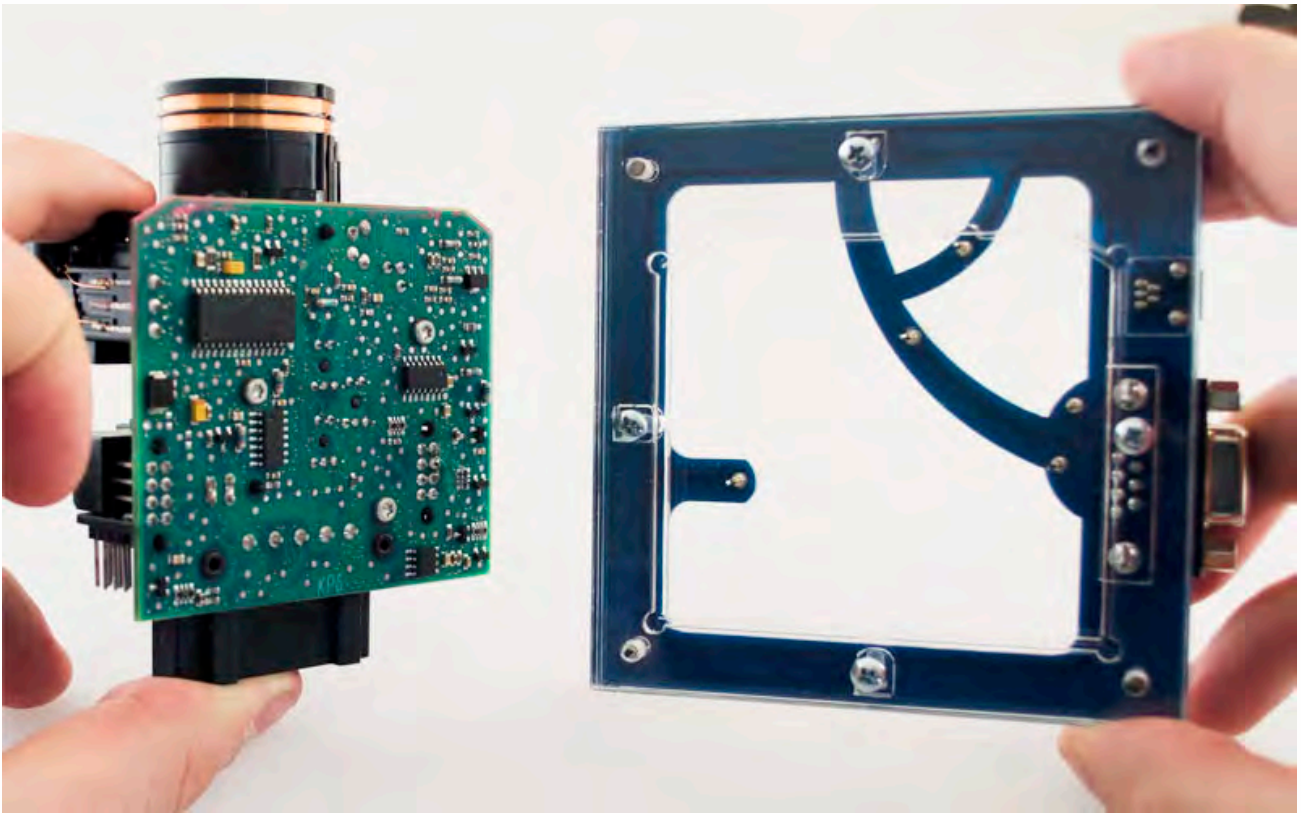
How to connect

Carefully open by pushing in the EIS back body tabs.

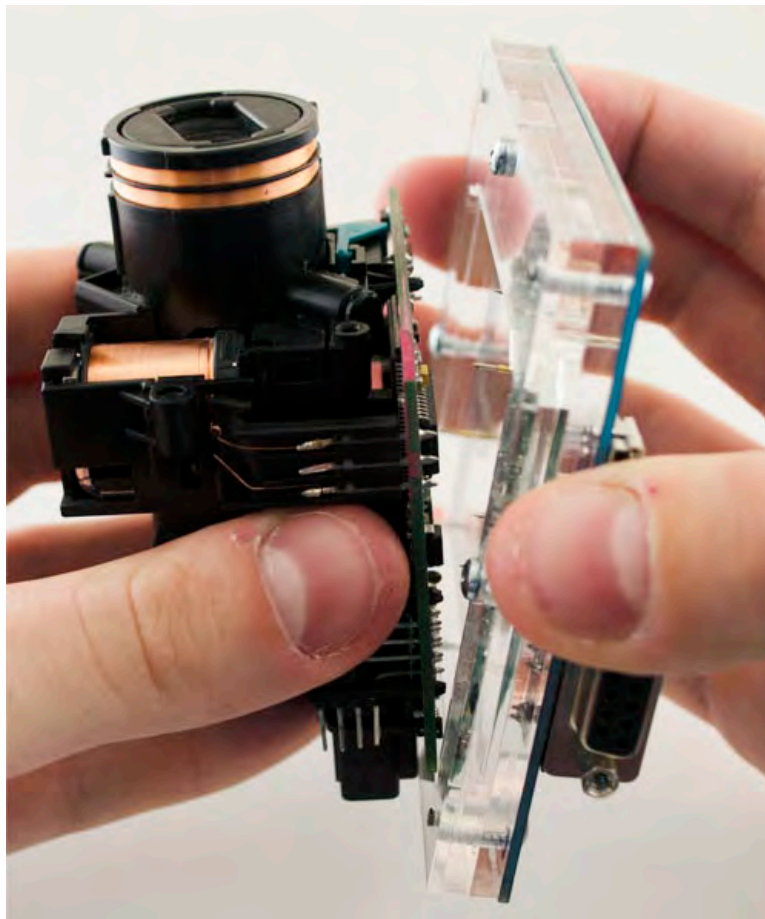


W169

Match the top of the EIS board with top of Click'n Go adapter.

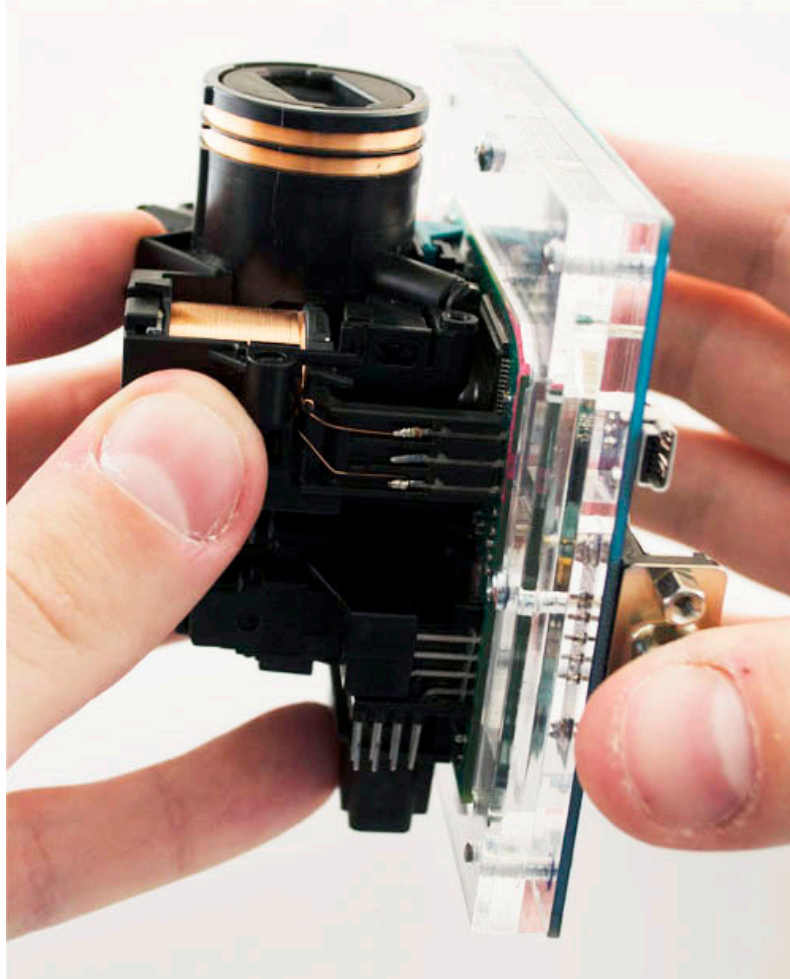


Mount the EIS board on the Click'n Go Adapter.

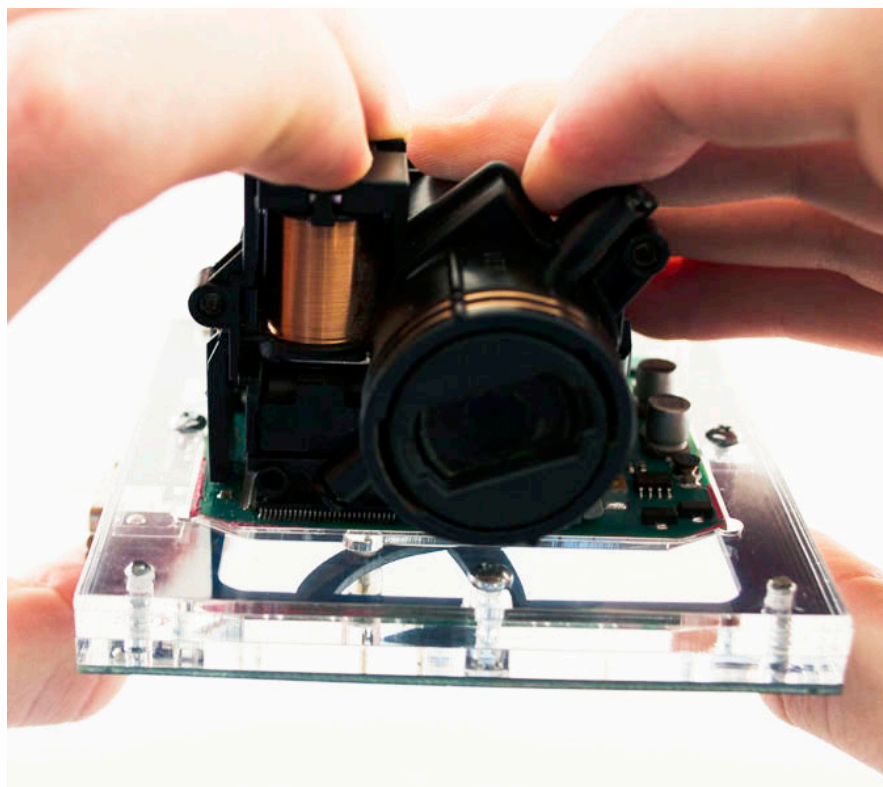


W169

Put the top of EIS board into Click'n Go adapter.

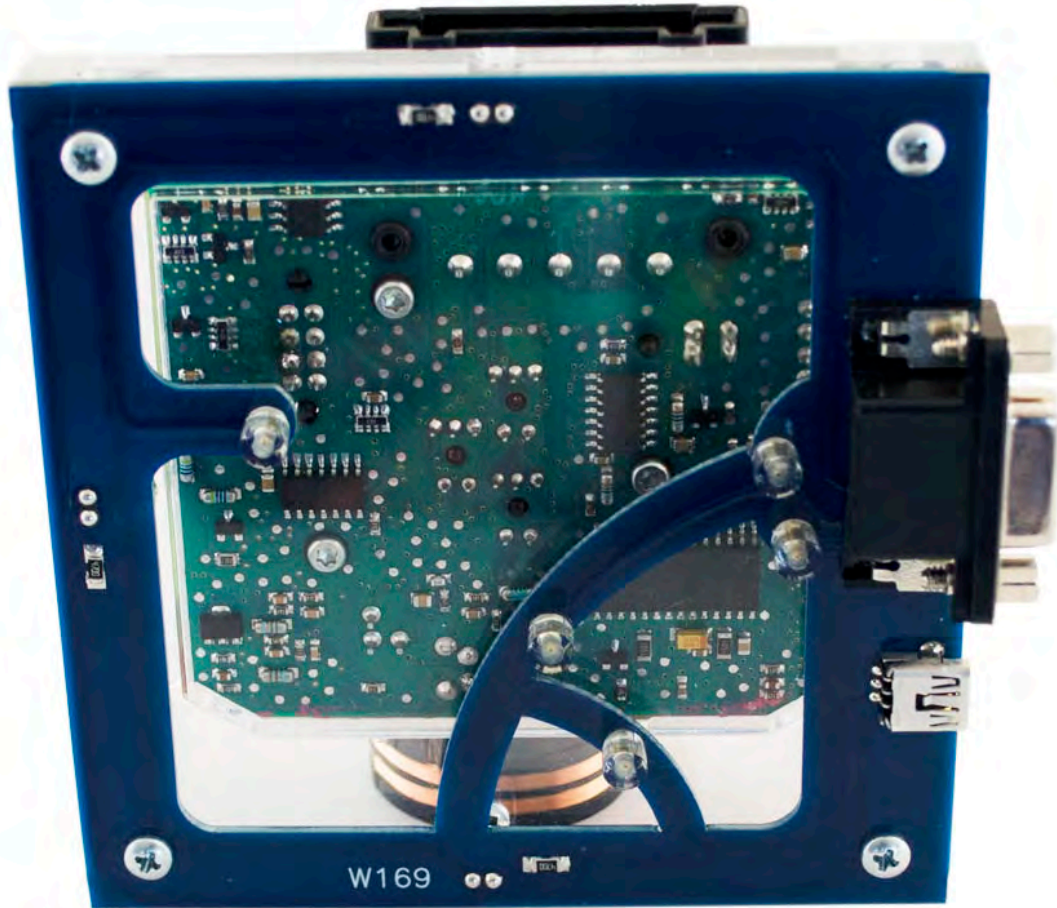


Carefully push down the EIS on to Click'n Go adapter.

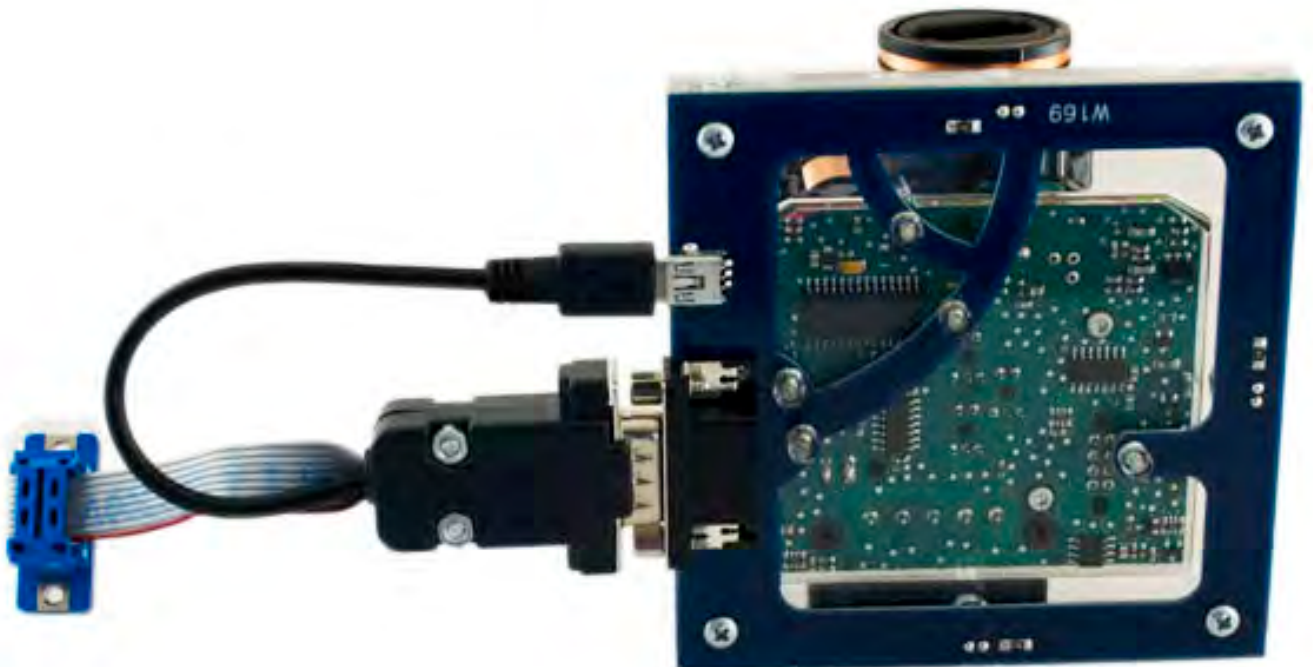


W169

Make sure that Click'n Go adapter is mounted correctly on the EIS.



Connect both cables to Click'n Go adapter.



W169

**Connect MBProg 2 Click'n Go cable to MBProg.
Connect USB cable to MBProg and PC.**



W169

How to read

- Open MBProg software.
- Check bottom right corner if your device is correctly connected.
- Now click Chip button.

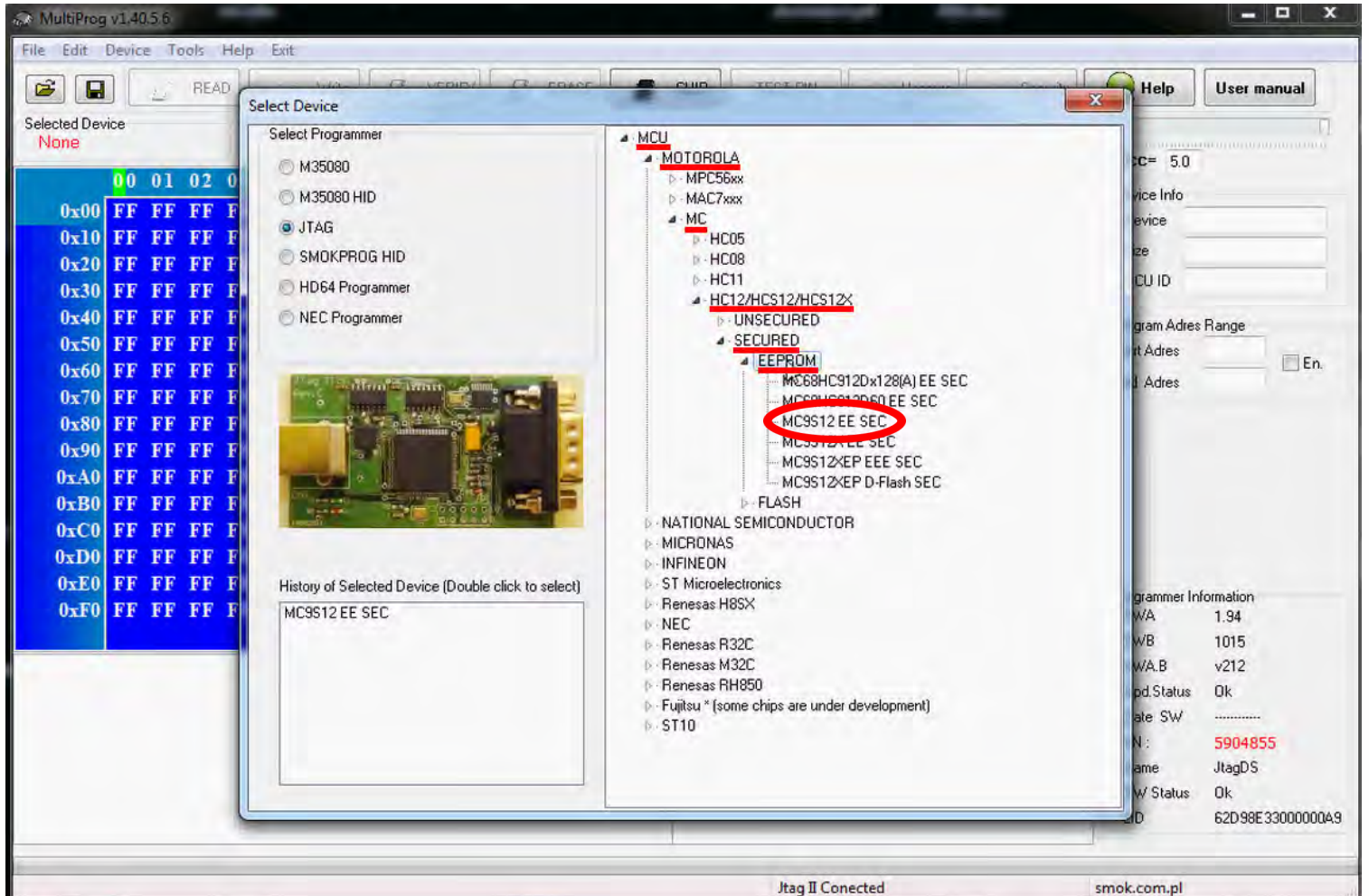
The screenshot shows the MultiProg v1.40.5.6 software interface. The 'CHIP' button in the toolbar is circled in red. The main window displays a memory dump with columns labeled 00 through 0F and 0 through F. The data in the dump consists of 'FF' values. On the right side, the 'Programmer Information' panel is highlighted with a red box, showing the following details:

| Programmer Information | |
|------------------------|-----------------|
| SWA | 1.94 |
| SWB | 1015 |
| SWA.B | v212 |
| Upd.Status | Ok |
| Date SW | |
| SN : | 5904855 |
| Name | JtagDS |
| HW Status | Ok |
| LID | 62D98E3300000A9 |

The status bar at the bottom indicates 'Jtag II Conected' and 'smok.com.pl'.

W169

Make sure that JTAG is selected in programmer software.
Select MOTOROLA > MC > HC12/HCS12/HCS12X > SECURED > EEPROM
and double click on MC9S12 EE SEC option as seen in the red circle.



W169

The EIS reading process is done.
If you can see VIN# it has been read correctly.

MultiProg v1.40.5.6

File Edit Device Tools Help Exit

READ Write VERIFY ERASE CHIP TEST PIN Usecure Security Help User manual

Selected Device: MC9S12 EE SEC

| Address | 00 | 01 | 02 | 03 | 04 | 05 | 06 | 07 | 08 | 09 | 0A | 0B | 0C | 0D | 0E | 0F | 01 | 2 | 3 | 4 | 5 | 6 | 7 | 8 | 9 | A | B | C | D | E | F |
|---------|----|----|----|----|----|----|----|----|----|----|----|----|----|----|----|----|-------|-------|-------|-------|-------|-------|-------|-------|-------|-------|-------|-------|-------|-------|-------|
| 0x3B0 | FF | FF | FF | FF | FF | FF | FF | FF | FF | FF | FF | FF | FF | FF | FF | FF | | | | | | | | | | | | | | | |
| 0x3C0 | FF | FF | FF | FF | FF | FF | FF | FF | FF | FF | FF | FF | 01 | 24 | 52 | 07 | 12 | 57 | | | | | | | | | | | | | |
| 0x3D0 | 44 | 44 | 32 | 34 | 35 | 32 | 30 | 37 | 31 | 4A | 31 | 31 | 33 | 30 | 37 | 33 | | | | | | | | | | | | | | | |
| 0x3E0 | 01 | A7 | 40 | 74 | A2 | 9A | 00 | 09 | 14 | 00 | 00 | 00 | 00 | 00 | 00 | 00 | | | | | | | | | | | | | | | |
| 0x3F0 | 00 | 00 | 14 | 00 | 00 | 00 | 20 | E0 | 00 | 00 | 00 | 00 | 10 | 72 | 05 | C5 | | | | | | | | | | | | | | | |
| 0x400 | 00 | 00 | 90 | 55 | 68 | 00 | FF | FF | 08 | 1E | C8 | 01 | 53 | 2A | 6F | AE | | | | | | | | | | | | | | | |
| 0x410 | 02 | E6 | 86 | 70 | CA | D2 | AF | D3 | FD | 19 | 79 | 8F | 35 | 2D | 50 | 2C | | | | | | | | | | | | | | | |
| 0x420 | FF | FF | FF | FF | FF | FF | FF | FF | FF | 01 | 01 | 04 | FF | FF | FF | FF | | | | | | | | | | | | | | | |
| 0x430 | FF | FF | FF | FF | FF | FF | FF | FF | FF | FF | FF | FF | FF | FF | FF | FF | | | | | | | | | | | | | | | |
| 0x440 | FF | FF | 00 | 80 | 00 | 00 | 00 | 00 | 00 | 00 | 00 | 00 | 00 | 80 | 42 | 02 | | | | | | | | | | | | | | | |
| 0x450 | F5 | D1 | 3B | 7F | BC | 60 | E3 | E8 | AB | 00 | FF | FF | FF | FF | FF | FF | | | | | | | | | | | | | | | |
| 0x460 | FF | FF | AA | 21 | 80 | 0F | A4 | AA | FF | FF | AA | 57 | 44 | 44 | 32 | 34 | | | | | | | | | | | | | | | |
| 0x470 | 35 | 32 | 30 | 37 | 31 | 4A | 31 | 31 | 33 | 30 | 37 | 33 | 57 | B3 | D3 | 25 | | | | | | | | | | | | | | | |
| 0x480 | 9F | 87 | FA | 86 | 11 | 13 | 00 | 00 | 00 | 20 | 00 | 20 | BF | BF | FF | BF | | | | | | | | | | | | | | | |
| 0x490 | 00 | 00 | 00 | 20 | 00 | 00 | 20 | 20 | BF | BF | BF | BF | 00 | 00 | 00 | 00 | | | | | | | | | | | | | | | |
| 0x4A0 | 00 | 00 | 00 | 00 | FF | FF | FF | FF | 00 | 51 | FF | FF | FF | FF | 02 | 00 | | | | | | | | | | | | | | | |
| 0x4B0 | 02 | E0 | E0 | 55 | 00 | 00 | AA | E0 | A4 | 88 | 26 | E9 | 1C | B2 | 38 | C4 | | | | | | | | | | | | | | | |

Read EE MC9S12 EE SEC
Read ID MCU ok
MCU ID : 0115
Memory Config : 1380
Unsecuring...
f=136, t1=165, t2=7
Unsecure Ok
Reading EE MC9S12 Secured...
Read OK
Saved backup File : C:\Users\PatrykMBE\Documents\Temp\Temp9.bin

Read OK Jtag II Connected smok.com.pl