

Click'n Go



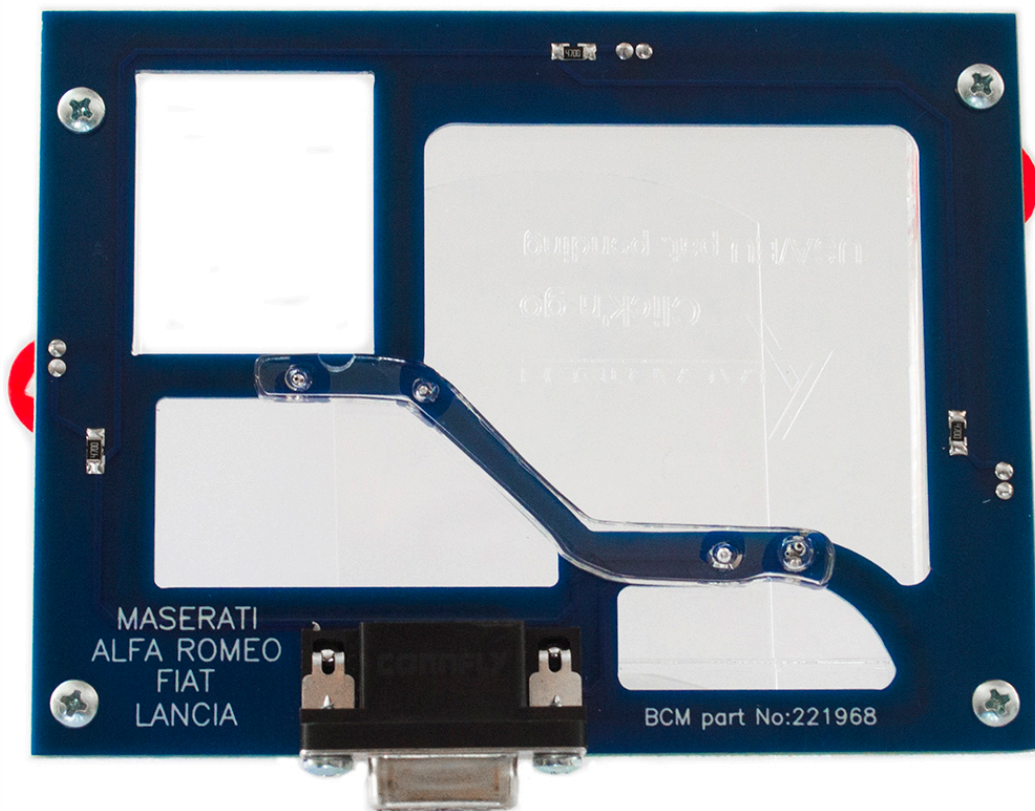
Magneti Marelli Maserati, Alfa Romeo, Fiat, Lancia Click'n Go Adapter

Works with MBProg Programmer. No soldering required.

Supported vehicles:

- Maserati (Quattroporte, Granturismo),
- Ferrari (559),
- Alfa Romeo (147, 159, GT),
- Lancia (Thesis, Ypsilon),
- Fiat (Albea(2002-2006), Doblo(2000-2005), Palio(1999-2006), Punto(1999-2005), Stilo(1999-2007))

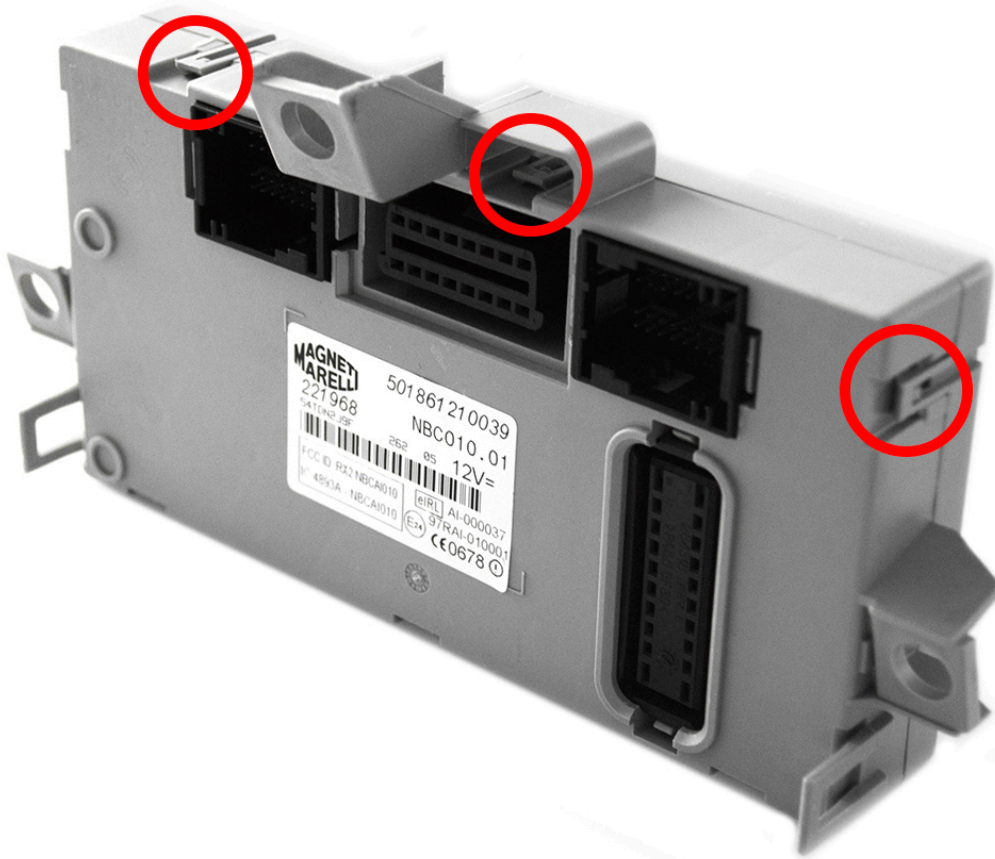
BCM part No: **221968**



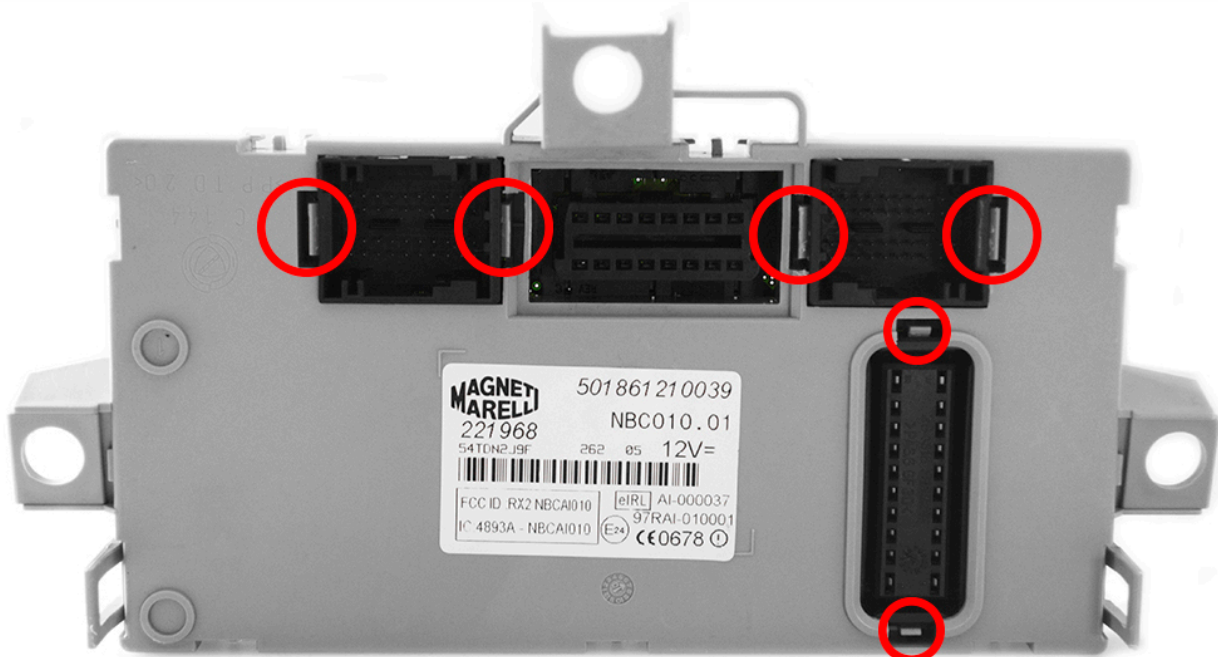
Maserati, Alfa Romeo, Fiat, Lancia

How to connect

Carefully open by pushing in the BCM back body tabs.

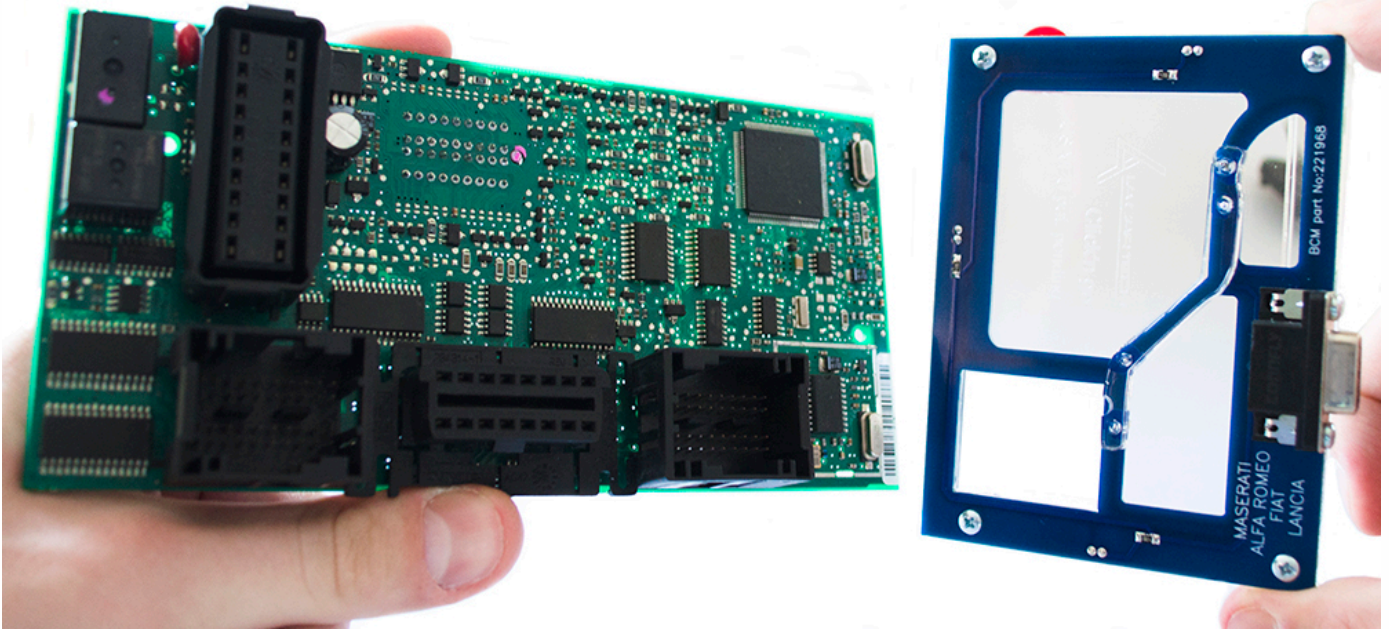


And by pushing in tabs next to sockets.

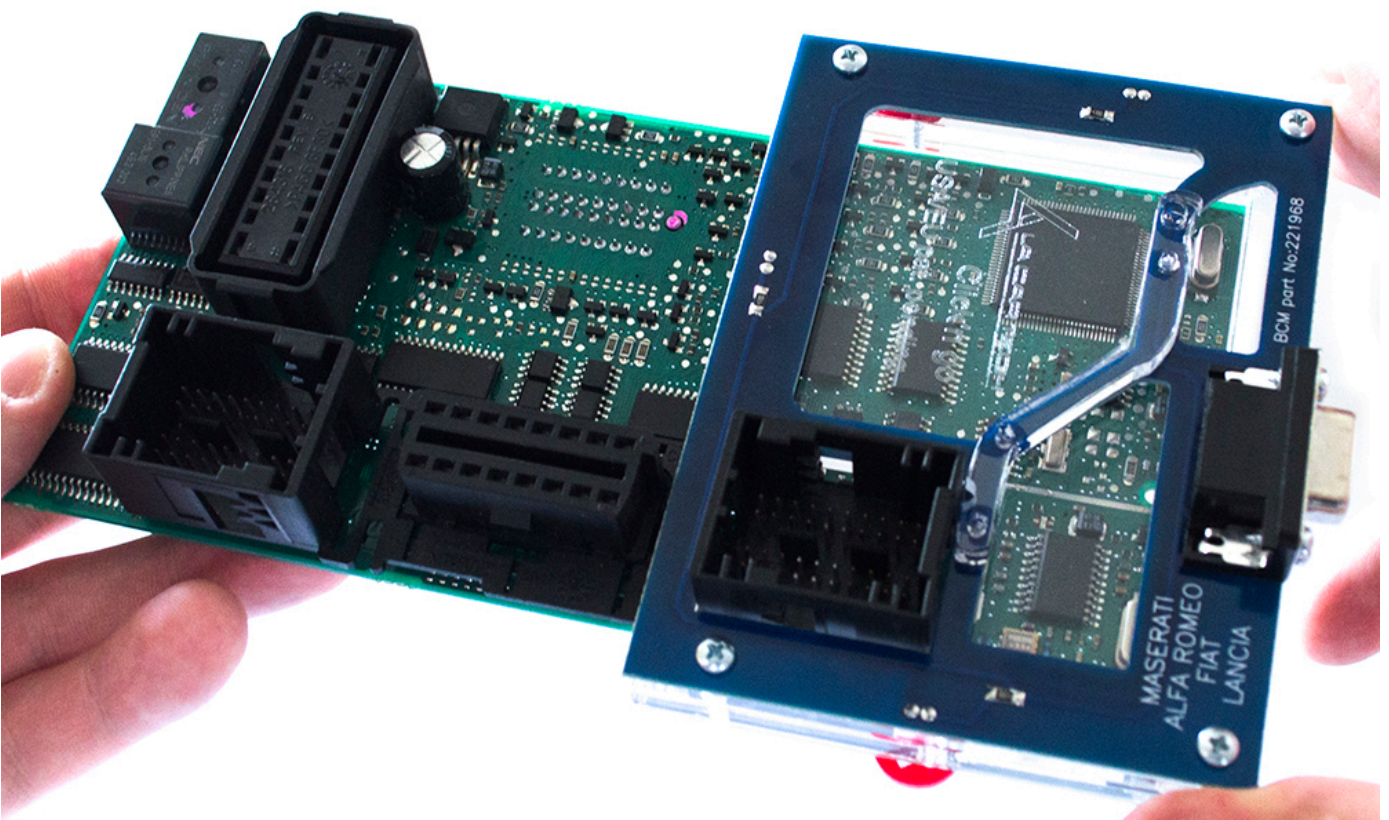


Maserati, Alfa Romeo, Fiat, Lancia

Match BCM board with Click'n Go adapter.

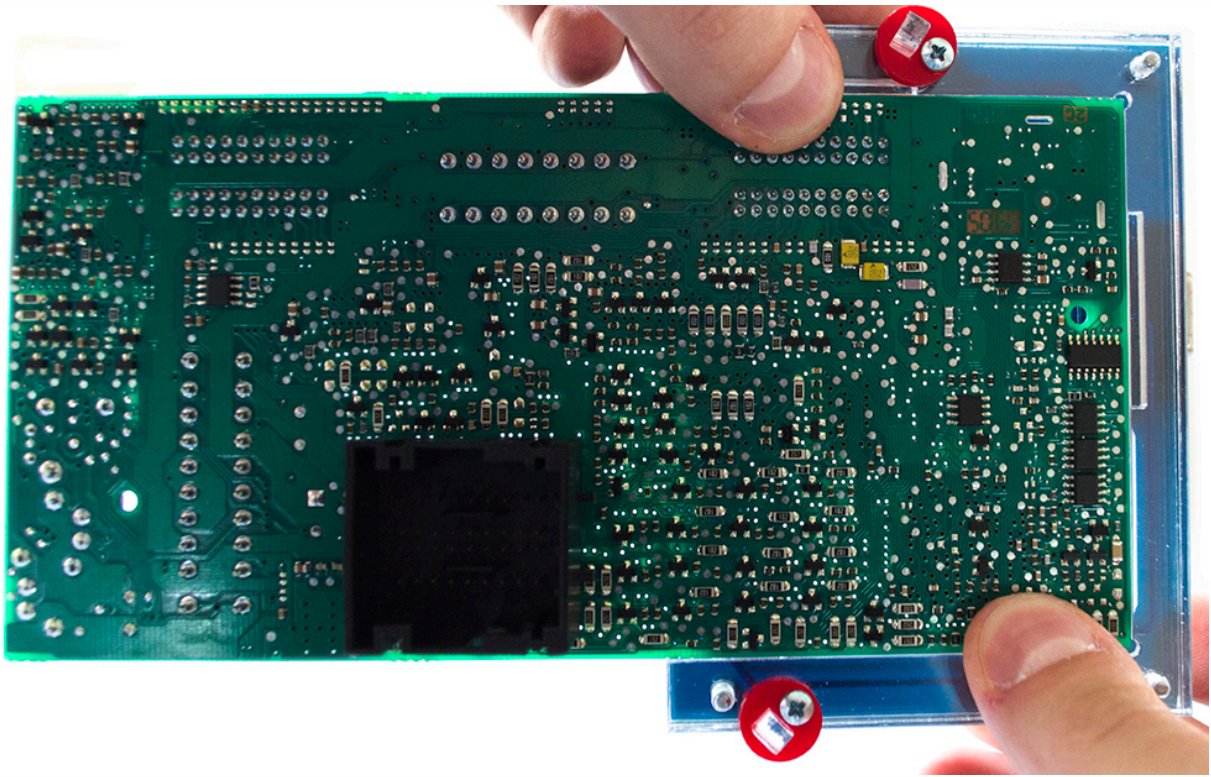


Mount Click'n Go adapter on the BCM board, directly over the BCM socket.

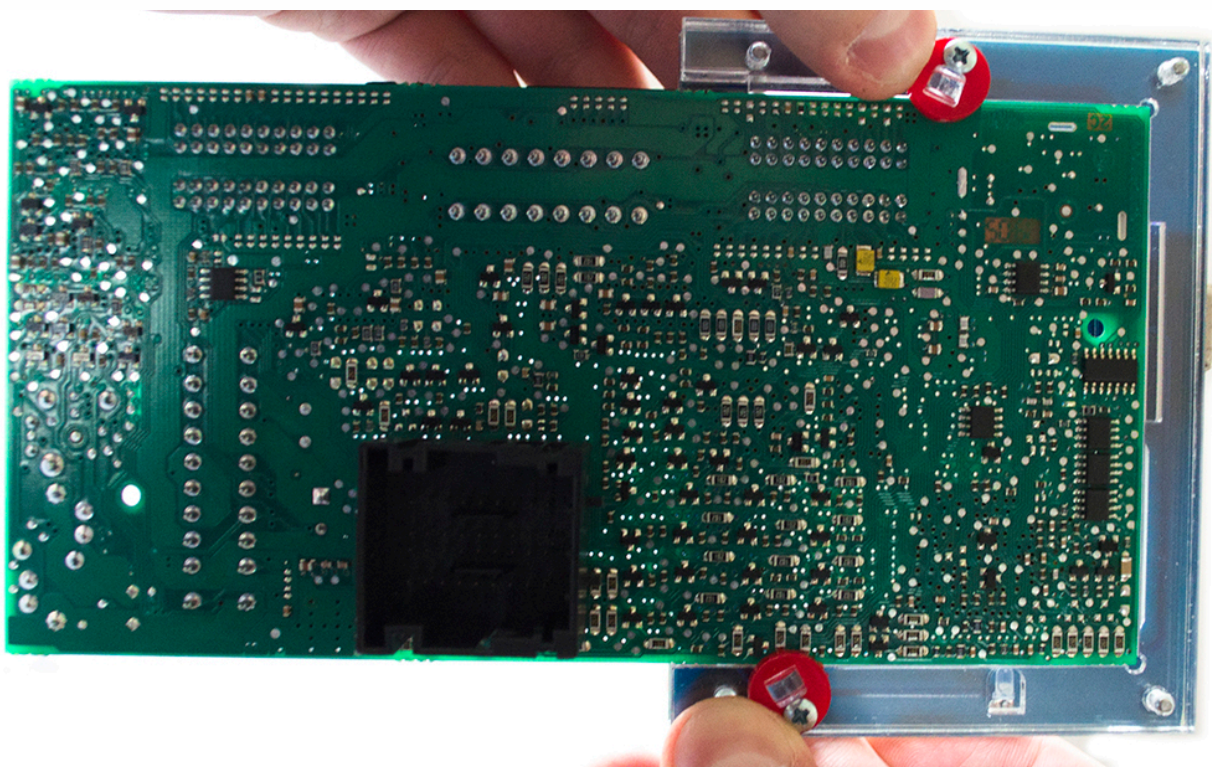


Maserati, Alfa Romeo, Fiat, Lancia

Push down BCM board on to Click'n Go adapter.

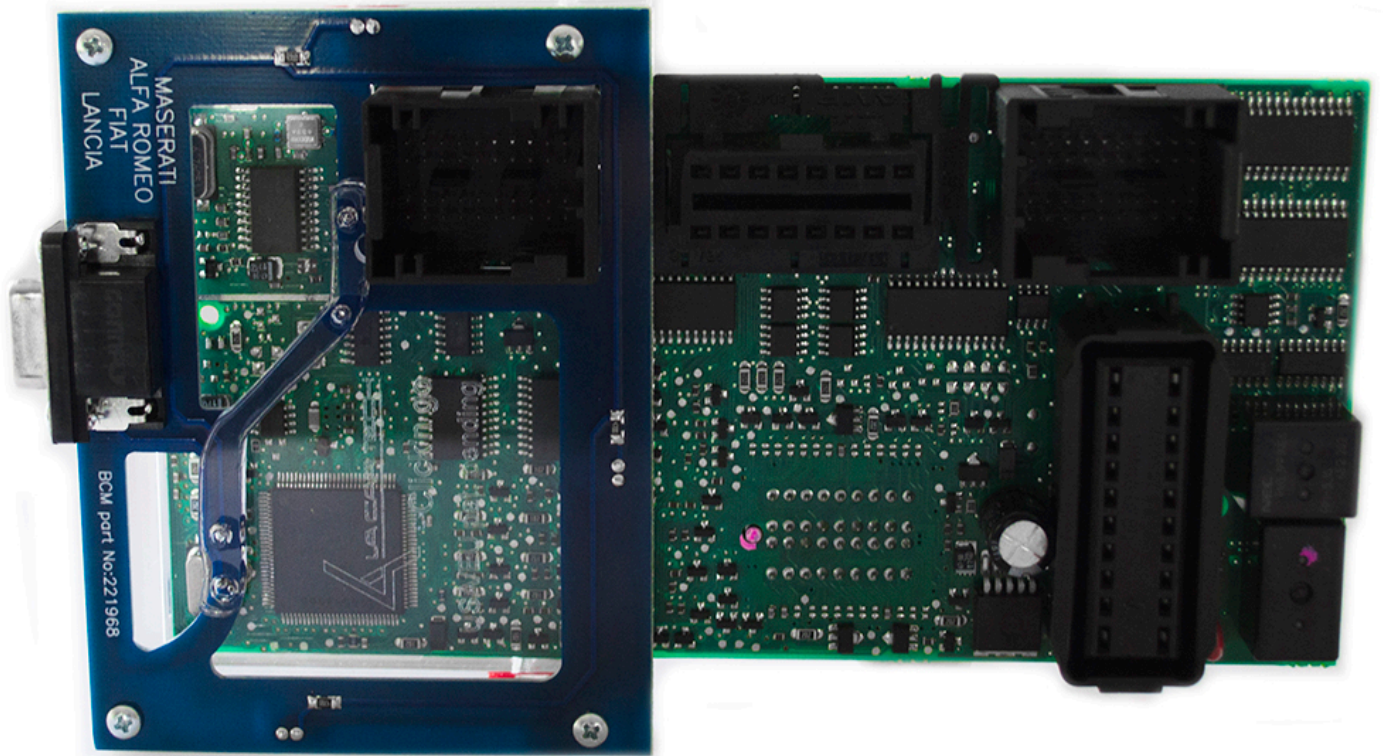


Secure BCM with the safety locks by turning them over the board.



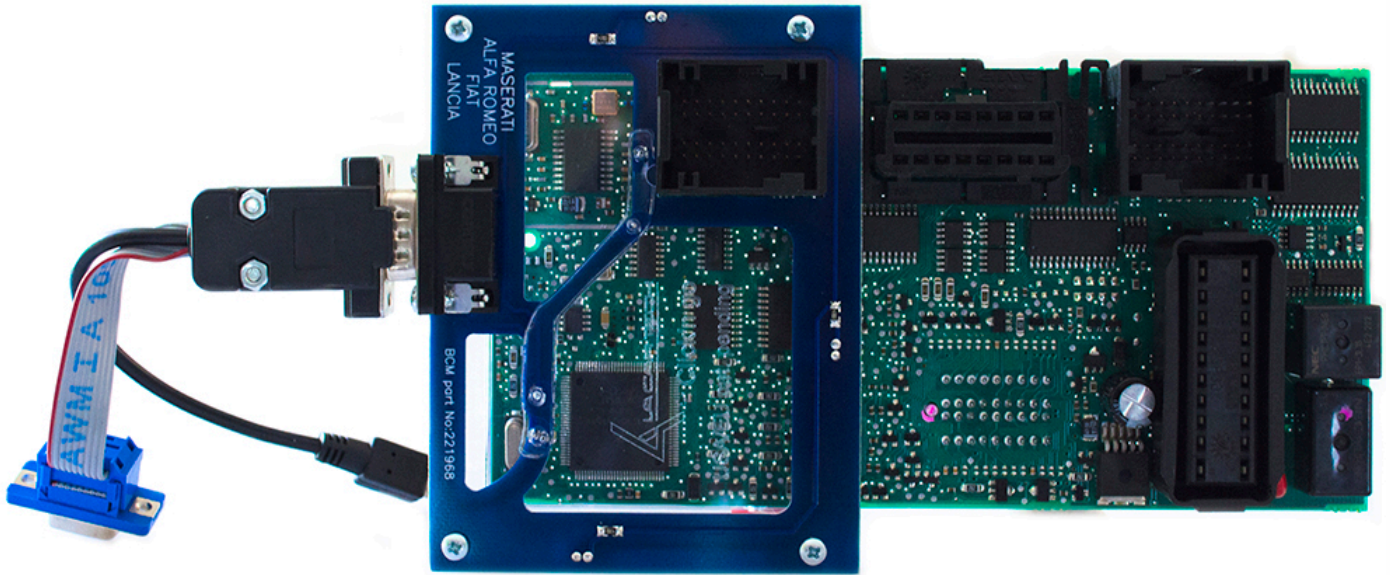
Maserati, Alfa Romeo, Fiat, Lancia

Make sure that Click'n Go adapter is mounted correctly on the BCM.

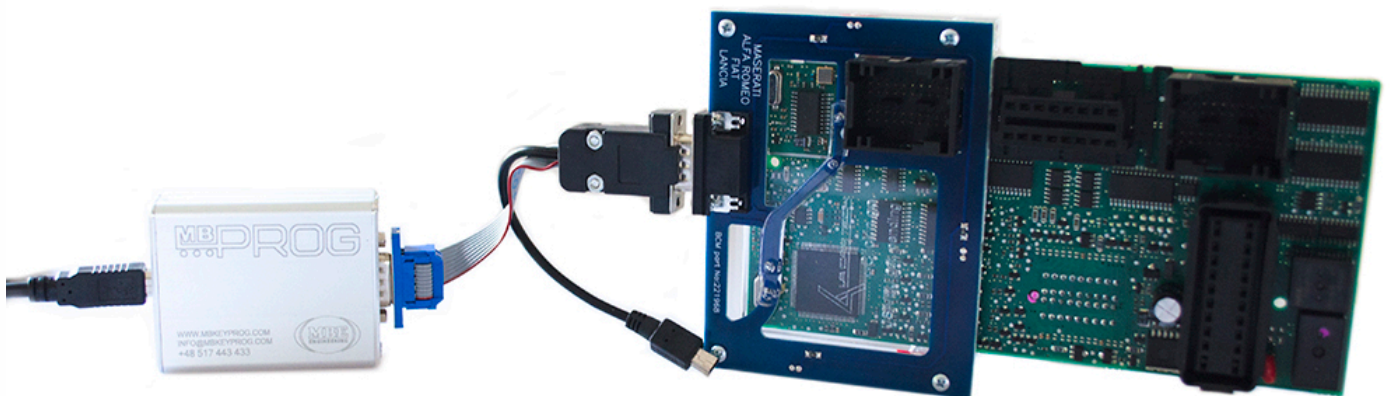


Maserati, Alfa Romeo, Fiat, Lancia

Connect MBProg 2 Click'n Go cable to Click'n Go adapter.



Connect MBProg 2 Click'n Go cable to MBProg.
Connect USB cable to MBProg and PC.



How to read

Open MBProg software.

Check bottom right corner if your device is correctly connected.

Now click Chip button.

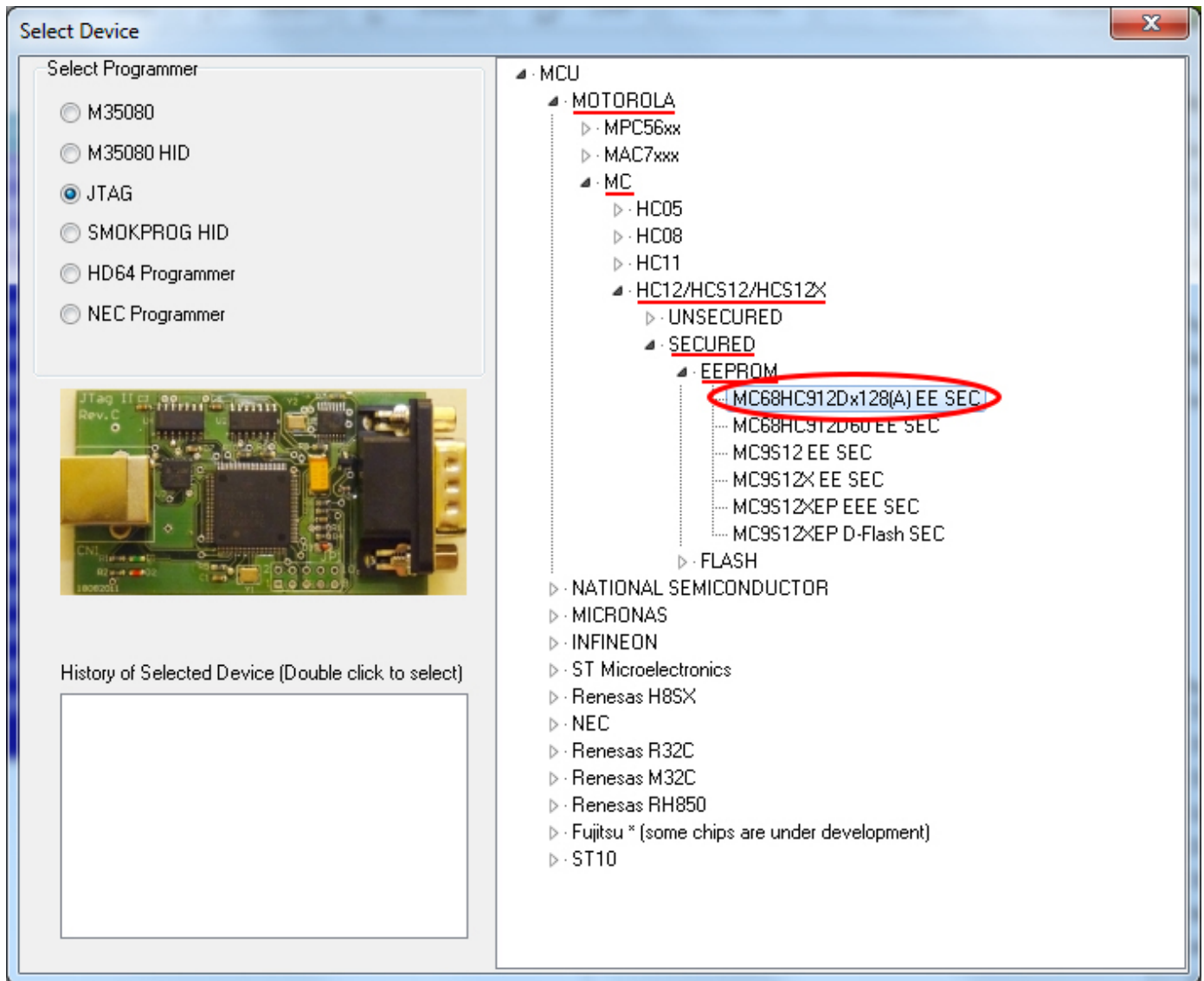
The screenshot shows the MultiProg v1.40.5.6 software interface. The 'CHIP' button in the top toolbar is circled in red. The main window displays a memory dump with addresses from 0x00 to 0xF0 and hex values of FF. The bottom right corner, enclosed in a red box, shows the 'Programmer Information' section with the following details:

Programmer Information	
SWA	1.34
SWB	1015
SWA.B	v212
Upd.Status	Ok
Date SW
SN :	5904855
Name	.JtagDS
HW Status	Ok
LID	62D98E3300000A9

At the bottom of the window, the status bar indicates 'Jtag II Conected' and 'smok.com.pl'.

Make sure that JTAG is selected in programmer software.

Select MOTOROLA > MC > HC12/HCS12/HCS12X > SECURED > EEPROM
and double click on MC68HC912Dx128(A) EE SEC option as seen in the red circle.



Maserati, Alfa Romeo, Fiat, Lancia

BCM reading process is done.

MultiProg v1.40.6.3

File Edit Device Tools Help Exit

READ Write VERIFY ERASE CHIP TEST PIN Usecure Security Help User manual

Selected Device: MC68HC912Dx128(A) EE SEC

Address	00	01	02	03	04	05	06	07	08	09	0A	0B	0C	0D	0E	0F	01	2	3	4	5	6	7	8	9	A	B	C	D	E	F
0x140	FF	FF	FF	FF	FF	FF	FF	FF	FF	FF	FF	FF	FF	FF	FF	FF
0x150	FF	FF	FF	FF	FF	FF	FF	FF	FF	FF	FF	FF	FF	FF	FF	FF
0x160	FF	FF	FF	FF	FF	FF	FF	FF	FF	FF	FF	FF	FF	01	61	4B	00	
0x170	00	80	08	15	40	2D	61	4E	1C	A0	80	02	0F	3F	05	22		
0x180	3D	00	00	80	08	07	33	26	21	40	00	00	A0	0A	16	36		
0x190	06	61	28	00	80	B8	08	17	40	20	61	4B	00	00	80	08		
0x1A0	14	40	17	22	3A	00	80	A8	08	13	3F	15	22	24	00	80		
0x1B0	A8	08	18	3F	11	61	50	00	00	80	08	19	40	12	61	42		
0x1C0	00	80	80	08	1A	40	09	61	50	00	00	80	08	0A	40	0A		
0x1D0	61	50	00	00	80	08	0B	40	0F	61	4B	00	00	80	08	10		
0x1E0	40	10	61	4C	00	00	80	08	11	40	FF	00	00	04	00	7F		
0x1F0	79	00	00	12	7C	0F	70	67	0A	08	30	70	00	00	00	FF		
0x200	3B	00	9B	00	9B	00	9B	00	9B	00	9B	00	9B	00	9B	00		
0x210	B5	00	9B	00	3B	FF	00	00	00	FF	00	01	FF	FF	DC	F7		
0x220	EC	11	25	6D	6D	5C	CA	E6	E6	8B	26	5D	FE	C6	57	06		
0x230	AC	A7	01	82	00	00	82	01	FF	00	00	00	00	00	00	00		
0x240	00	00	00	00	00	00	00	00	00	00	00	00	00	00	00	00		

Read EEprom HC12 Secure
Unsecuring...
f=96, t1=61, t2=21
Unsec No.1
Unsecure Ok
MC68HC912DG128
Read Ok
Saved backup File : C:\Users\MBE\Documents\Temp\Temp1925.bin

Read Ok Jtag II Connected smok.com.pl