

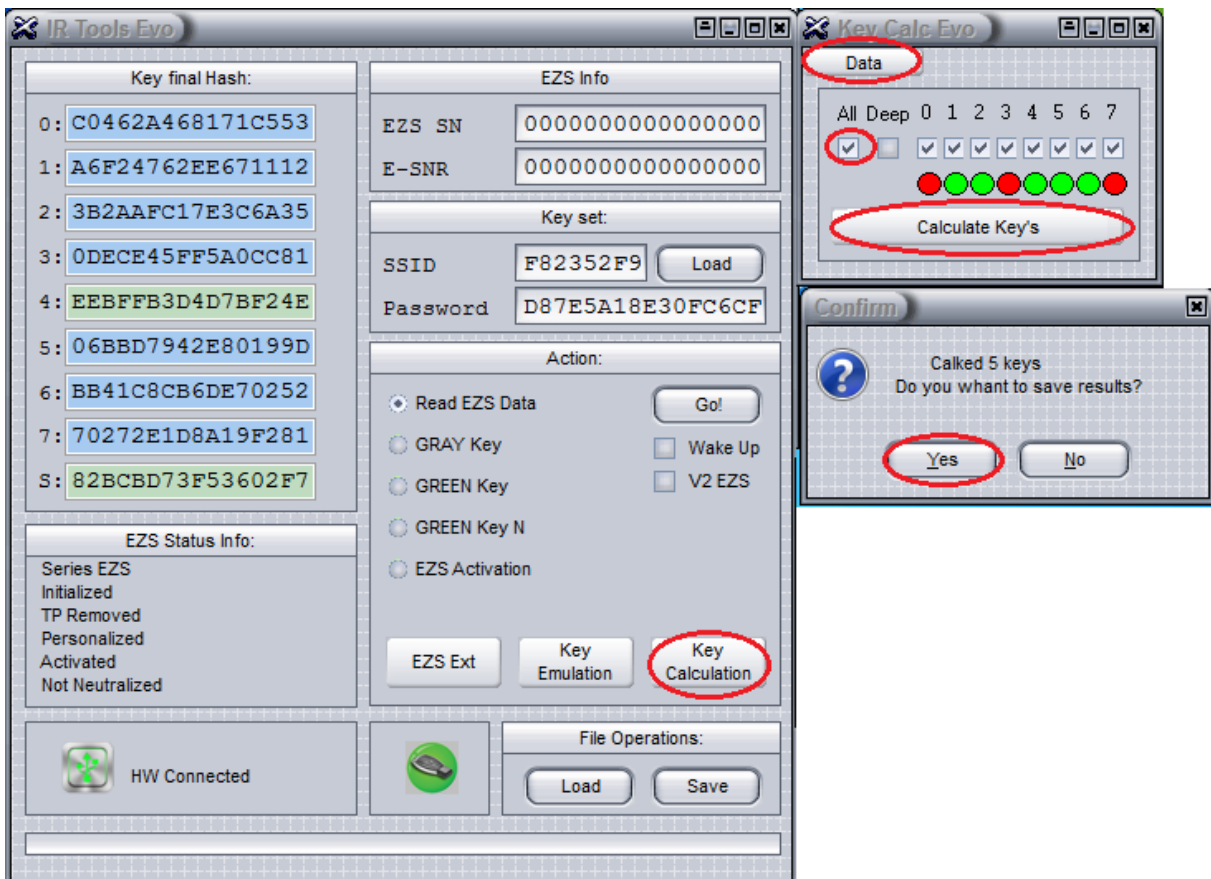
IR Tools Advanced – Manual ENG

IR Tools Advanced – the software includes IR Tools, EIS_EZS_Password_Reader and new option Key Emulation.

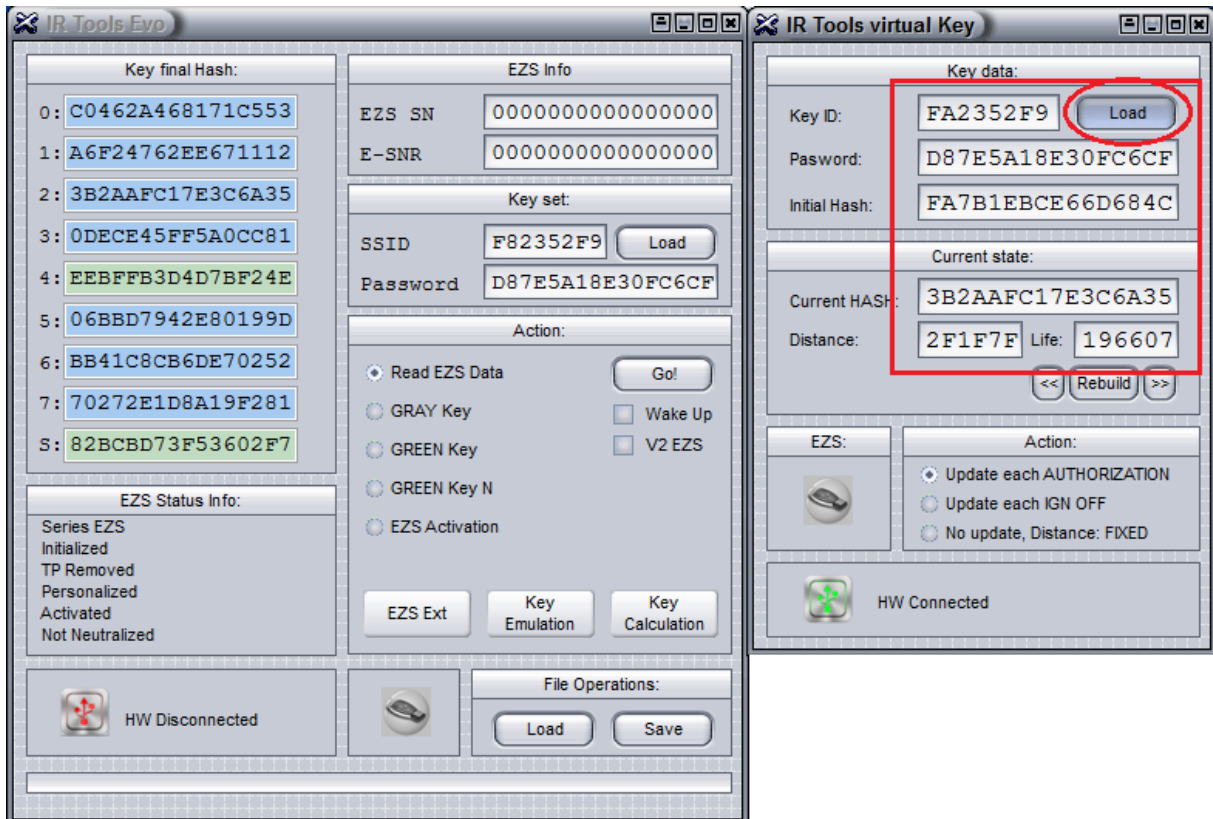
New option allows to turn ignition ON and start the car with IR Key Tool using the data have been read from EZS via IR port. It helps you to be sure if this EZS works properly and new keys were calculated correctly. It's especially actual for old EZS W203 based on HC08 where original NEC based keys did stop to work

Sample of Key Emulation.

Read EZS data via IR port. If you read all data including a password press „Key Calculation”. In new window press Data option to choose the path to the Data_New.bin file (do it just during the first running of this subprogram). Check the boxes of key's numbers you want to calculate or choose All keys. Press „Calculate Key's”. Wait till all keys will be calculated – press Yes to save files.



Choose Key Emulation option in main window. New subprogram IR Tools virtual Key will be opened. Load key file. You can see key's data in according fields after loading



Remove and insert IR Key Tool a couple of times till you see green tick symbol on right bottom. It means you can turn ON the ignition and start the car with IR Key Tool now.

