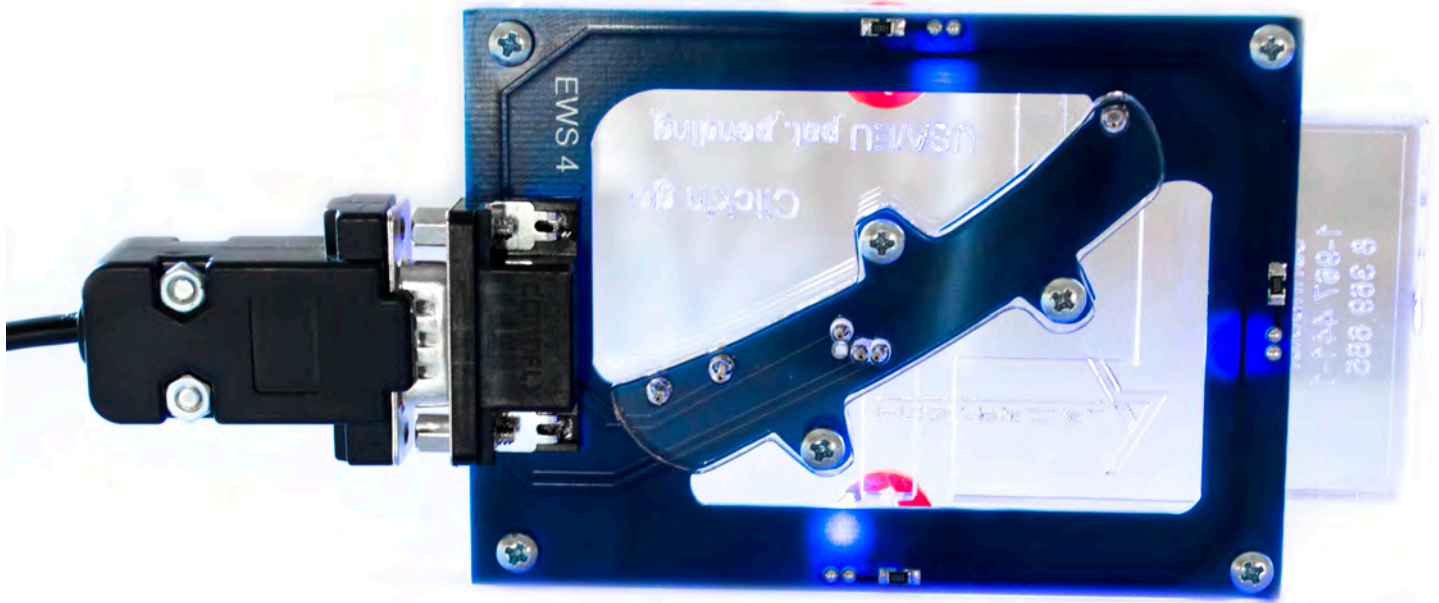


EWS4



EWS4 Click'n Go Adapter

To work with MBProg Programmer. No soldering required.

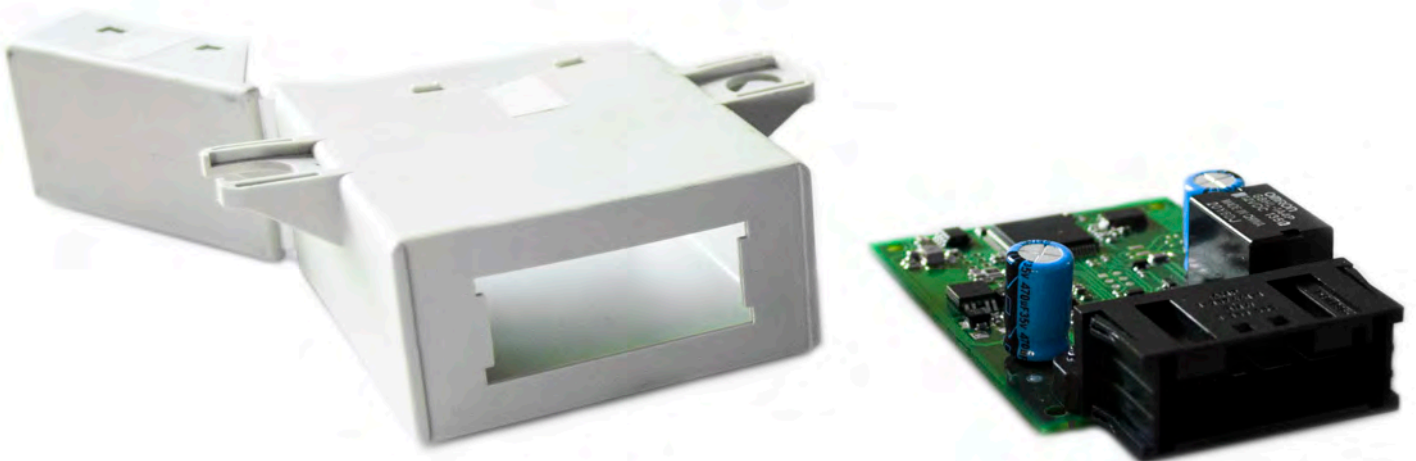
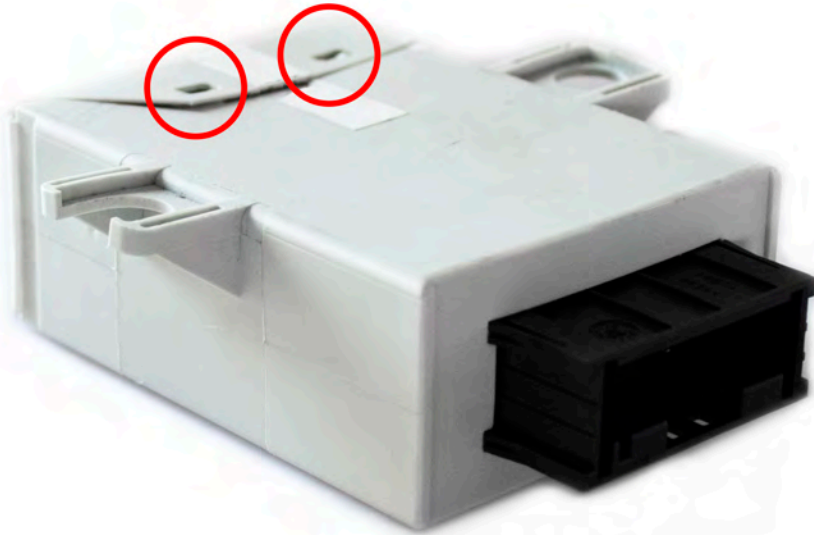


EWS4



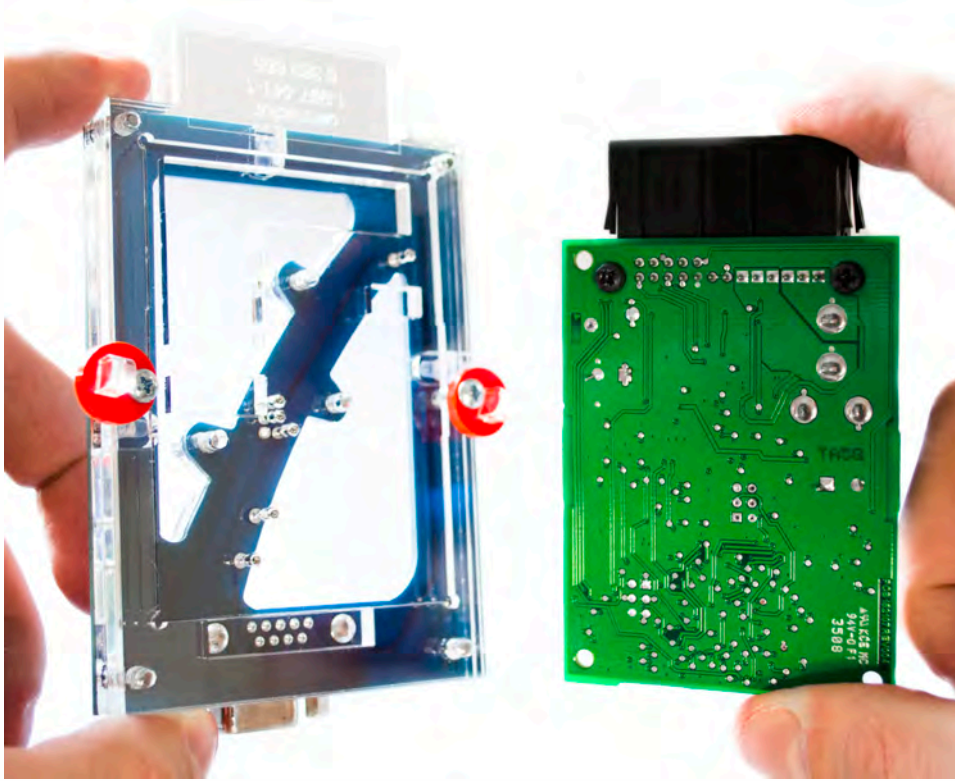
How to connect

Open EWS4 back side by pushing in the back body holders

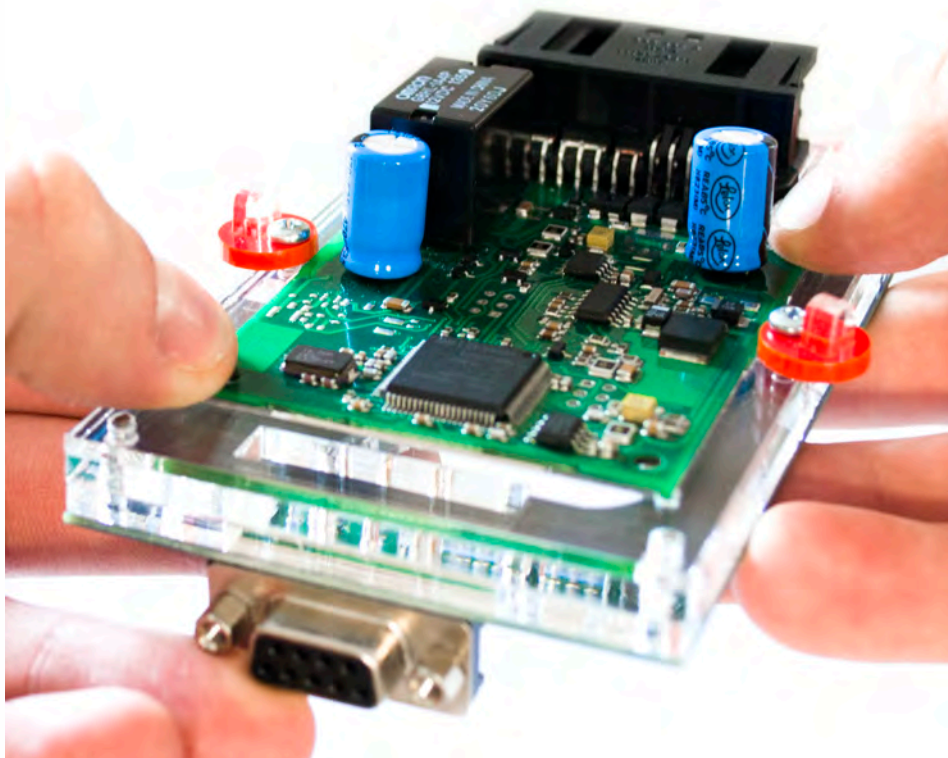


EWS4

Match EWS4 top with Click'n Go adapter top

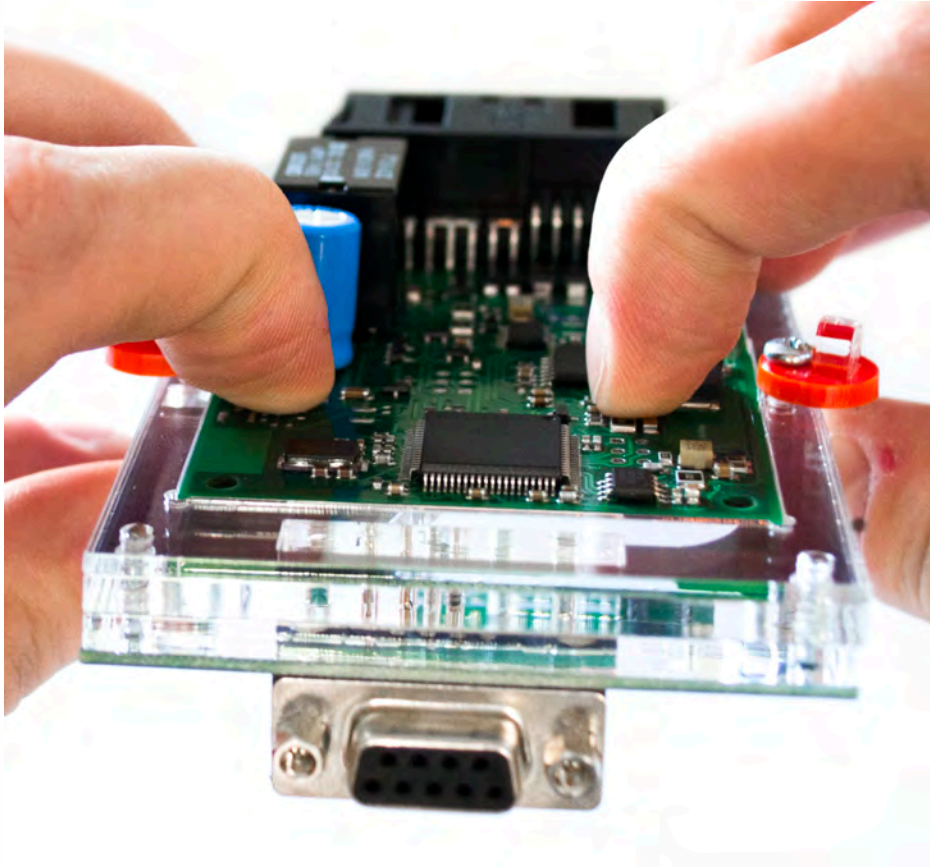


Put EWS4 into Click'n Go adapter

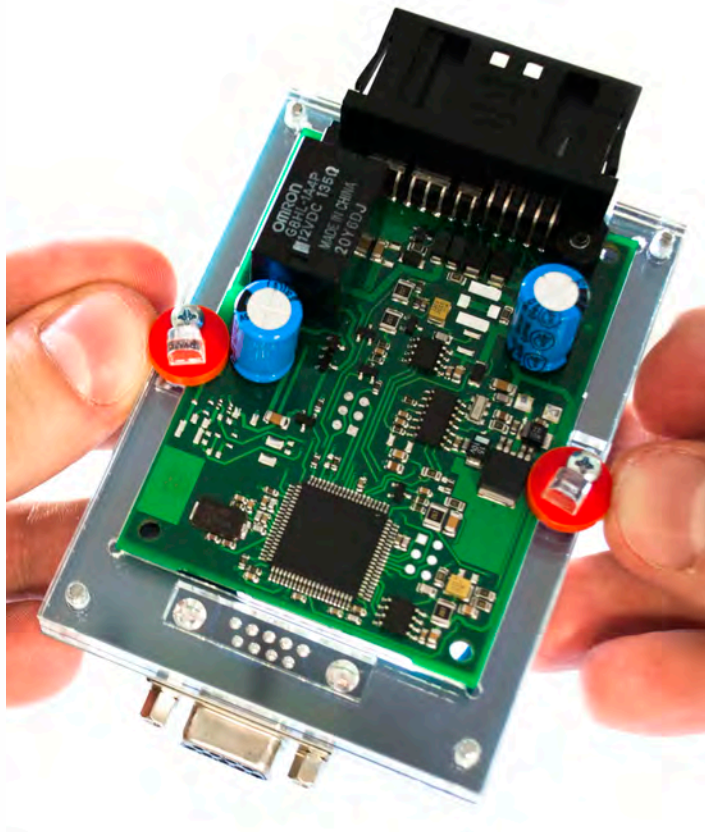


EWS4

Push down EWS4 into Click'n Go adapter

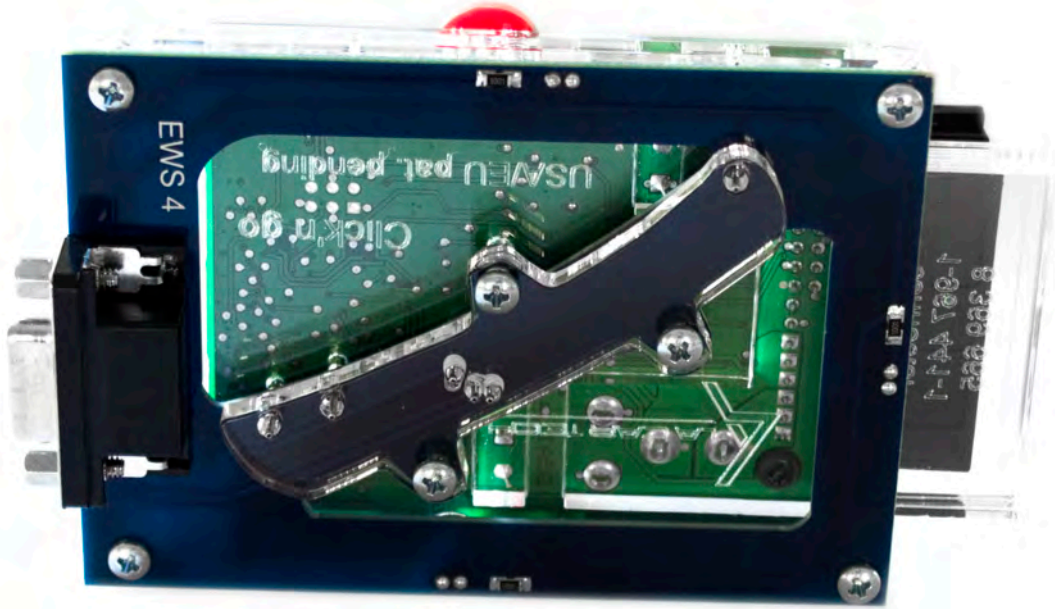


Secure EWS4 board by turning the adapter locks.



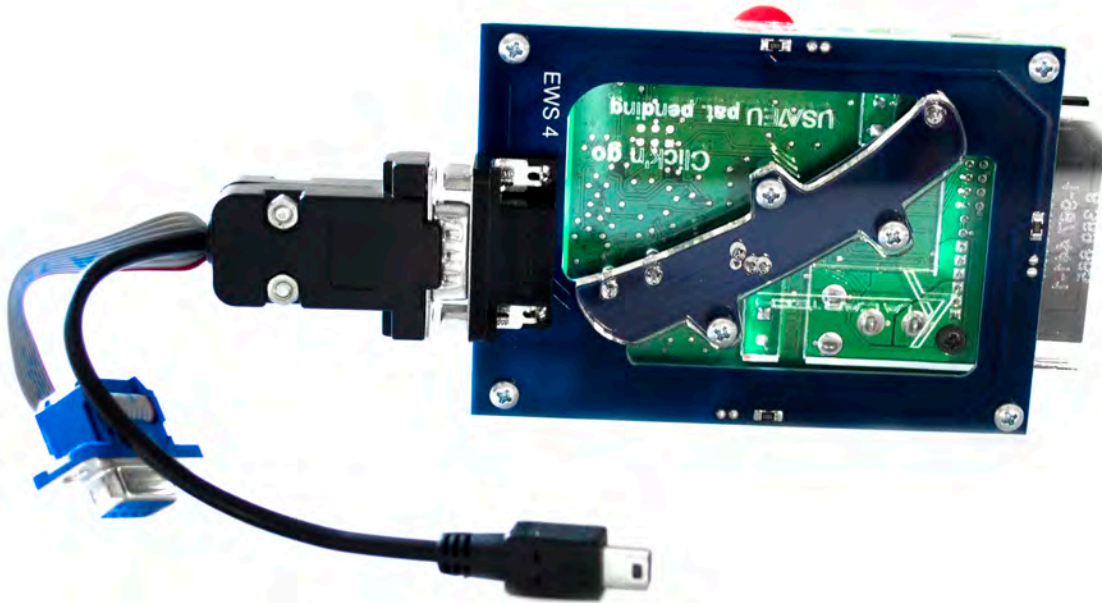
EWS4

Make sure that EWS4 is stable in the Click'n Go adapter

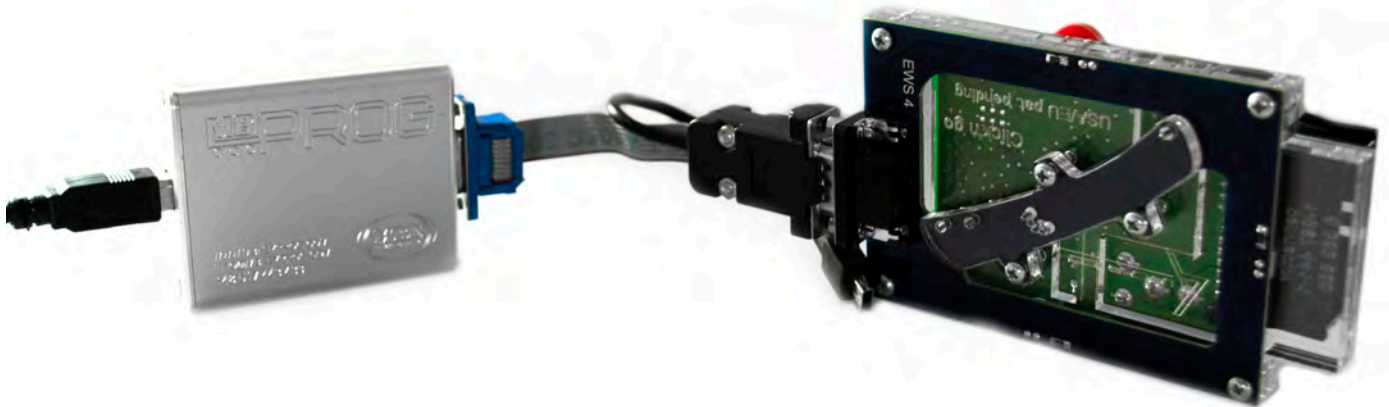


EWS4

Connect MBProg 2 Click'n Go cable to Click'n Go adapter



Connect MBProg 2 Click'n Go cable to MBProg
Connect MBProg USB cable to PC



EWS4



How to read

Open MBProg software

Check bottom right corner if your device is correctly connected

Click Chip button

MultiProg v1.40.5.6

File Edit Device Tools Help Exit

READ Write VERIFY ERASE CHIP TEST PIN Usecure Security Help User manual

Selected Device
None

	00	01	02	03	04	05	06	07	08	09	0A	0B	0C	0D	0E	0F	01	2	3	4	5	6	7	8	9	A	B	C	D	E	F
0x00	FF	FF	FF	FF	FF	FF	FF	FF	FF	FF	FF	FF	FF	FF	FF	FF
0x10	FF	FF	FF	FF	FF	FF	FF	FF	FF	FF	FF	FF	FF	FF	FF	FF
0x20	FF	FF	FF	FF	FF	FF	FF	FF	FF	FF	FF	FF	FF	FF	FF	FF
0x30	FF	FF	FF	FF	FF	FF	FF	FF	FF	FF	FF	FF	FF	FF	FF	FF
0x40	FF	FF	FF	FF	FF	FF	FF	FF	FF	FF	FF	FF	FF	FF	FF	FF
0x50	FF	FF	FF	FF	FF	FF	FF	FF	FF	FF	FF	FF	FF	FF	FF	FF
0x60	FF	FF	FF	FF	FF	FF	FF	FF	FF	FF	FF	FF	FF	FF	FF	FF
0x70	FF	FF	FF	FF	FF	FF	FF	FF	FF	FF	FF	FF	FF	FF	FF	FF
0x80	FF	FF	FF	FF	FF	FF	FF	FF	FF	FF	FF	FF	FF	FF	FF	FF
0x90	FF	FF	FF	FF	FF	FF	FF	FF	FF	FF	FF	FF	FF	FF	FF	FF
0xA0	FF	FF	FF	FF	FF	FF	FF	FF	FF	FF	FF	FF	FF	FF	FF	FF
0xB0	FF	FF	FF	FF	FF	FF	FF	FF	FF	FF	FF	FF	FF	FF	FF	FF
0xC0	FF	FF	FF	FF	FF	FF	FF	FF	FF	FF	FF	FF	FF	FF	FF	FF
0xD0	FF	FF	FF	FF	FF	FF	FF	FF	FF	FF	FF	FF	FF	FF	FF	FF
0xE0	FF	FF	FF	FF	FF	FF	FF	FF	FF	FF	FF	FF	FF	FF	FF	FF
0xF0	FF	FF	FF	FF	FF	FF	FF	FF	FF	FF	FF	FF	FF	FF	FF	FF

Vcc= 5.0

Device Info
Device
Size
MCU ID

Program Adres Range
Start Adres En.
End Adres

Programmer Information
SWA 1.34
SWB 1015
SWA.B v212
Upd.Status Ok
Date SW

SN : 5904855
Name .JtagDS
HW Status Ok
LID 62D98E3300000A9

Jtag II Conected smok.com.pl

EWS4

EZS reading process is done!

MultiProg v1.40.5.7

File Edit Device Tools Help Exit

READ Write VERIFY ERASE CHIP TEST PIN Usecure Security Help User manual

Selected Device
MC9S12 EE SEC

	00	01	02	03	04	05	06	07	08	09	0A	0B	0C	0D	0E	0F	0123456789ABCDEF
0x000	A5	01	FF	FF	AA	00	00	00	09	14	53	50	07	81	81	07CSP.....
0x010	43	08	76	01	FD	0B	01	0A	0A	01	00	00	01	00	00	00	C.....
0x020	CD	B2	6D	1D	AA	19	99	10	E1	01	00	00	B2	F2	FF	86
0x030	E9	2E	1D	21	E3	01	00	00	03	54	FD	3E	AB	EC	26	D9
0x040	C1	01	00	00	6D	EA	B6	3F	2F	14	8A	38	00	01	00	00
0x050	75	D7	60	C2	B1	74	B0	E1	00	01	00	00	3E	DF	9D	D3
0x060	BA	10	54	17	00	01	00	00	88	F5	B6	81	85	19	D5	A0
0x070	00	01	00	00	00	20	35	3B	C2	28	26	8D	00	01	00	00
0x080	7D	69	FA	E2	BF	3A	3C	D2	00	01	00	00	B1	DD	11	9A
0x090	94	D6	0A	4D	00	01	00	00	E9	37	73	4A	F6	27	01	00
0x0A0	6A	2C	01	00	00	00	00	00	55	E0	00	F8	00	00	00	00
0x0B0	30	38	42	32	39	38	31	41	31	35	34	34	37	30	30	30	08B3981A15447000
0x0C0	30	01	00	00	00	00	00	00	00	00	00	43	35	34	30	31CS401
0x0D0	31	39	37	31	30	32	00	00	C0	ED	78	73	87	BD	B9	1D	197102.....
0x0E0	5C	8A	BF	F2	CA	CD	87	94	3F	12	87	8C	78	42	46	E2
0x0F0	A3	75	40	0D	35	32	78	6B	6A	47	D2	D9	2D	17	13	B7
0x100	F6	20	15	58	60	67	2D	3E	FF	00	00	00	00	00	00	55

Read EE MC9S12 EE SEC
Read ID MCU ok
MCU ID :0201
Memory Config :1180
Unsecuring...
f=136, t1=23, t2=19
Unsecure Ok
Reading EE MC9S12 Secured...
Read OK
Saved backup File : C:\Users\Asus\Documents\Temp\Temp4.bin

Device Info
Vcc= 5.0
Device 9s12D64
Size 1024
MCU ID 0201

Program Adres Range
Start Adres 000000
End Adres 0003FF

Programmer Information
SWA 1.95
SWB 1015
SWA.B v212
Upd.Status Ok
Date SW
SN : 5904855
Name JtagDS
HW Status Ok
LID 62D98E33000000A9

Read OK Jtag II Connected smok.com.pl