

New software ESL/ELV EVO Prog – works with our MB Keyprog-2.

Features:

- read ESL/ELV status data.
- Opening and closing of ESL/ELV.
- Motorola based ESL erasing.
- unlock (renew) of NEC based ESL/ELV.
- transport protection removing for NEC based ESL/ELV.
- writing (programming) of ESL/ELV.

The software supports ESL/ELV from cars 1997 - 2013 M.Y. Cars models from W202/210 to W204/212/207.

Let's explain new software operations for most problematically and interesting ESL/ELV W204 with NEC.

1. Software Setup.

When you run the software first time copy please Data_New.rar file from flash memory card to hard disk of your PC and unrar (extract) it – then it will be named Data_New.bin.

We suggest you to paste Data_New.bin file to the same folder together with ESL/ELV EVO prog.exe file.

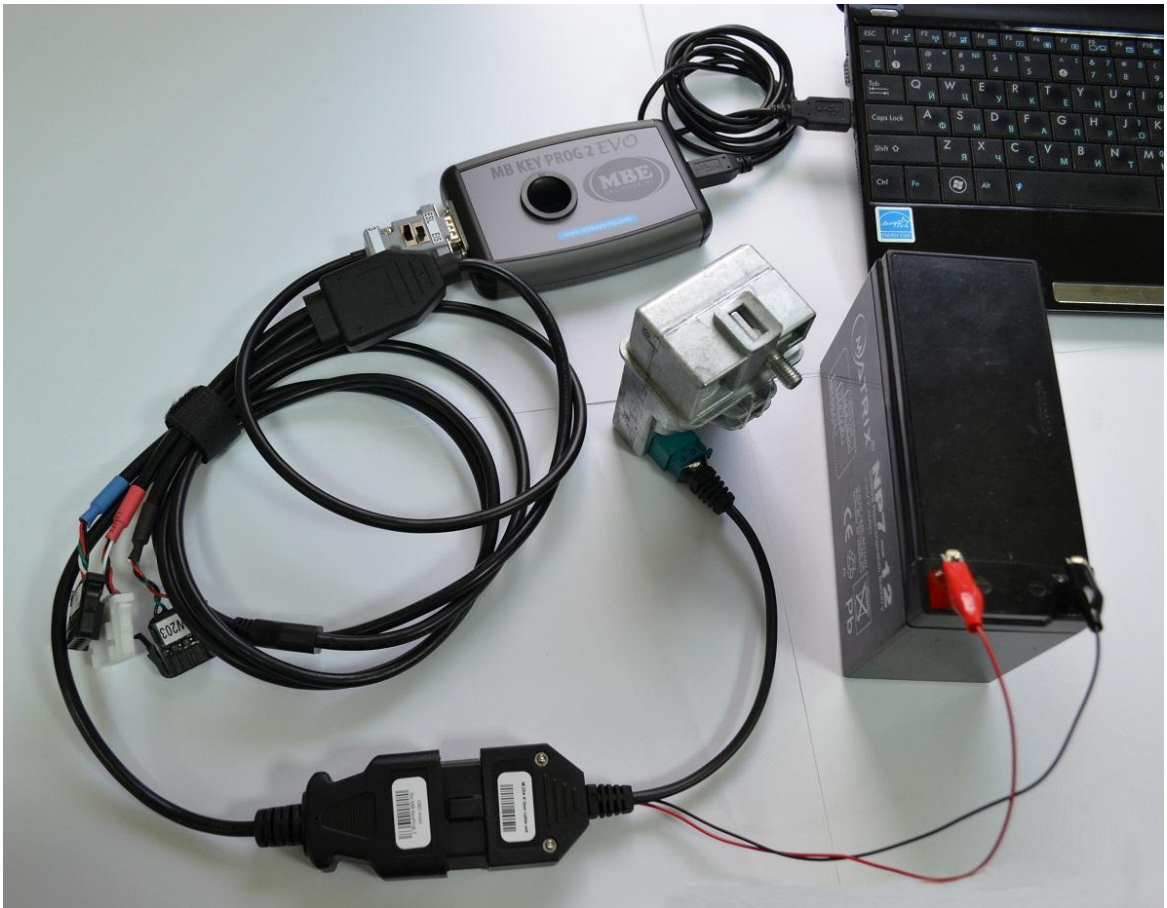
Run the sw ESL/ELV Evo prog, click Data option, choose the path to Data_New.bin file.

Also you can use file Data_New.bin you maybe had already for your NEC prog v.11/12. They are the same.

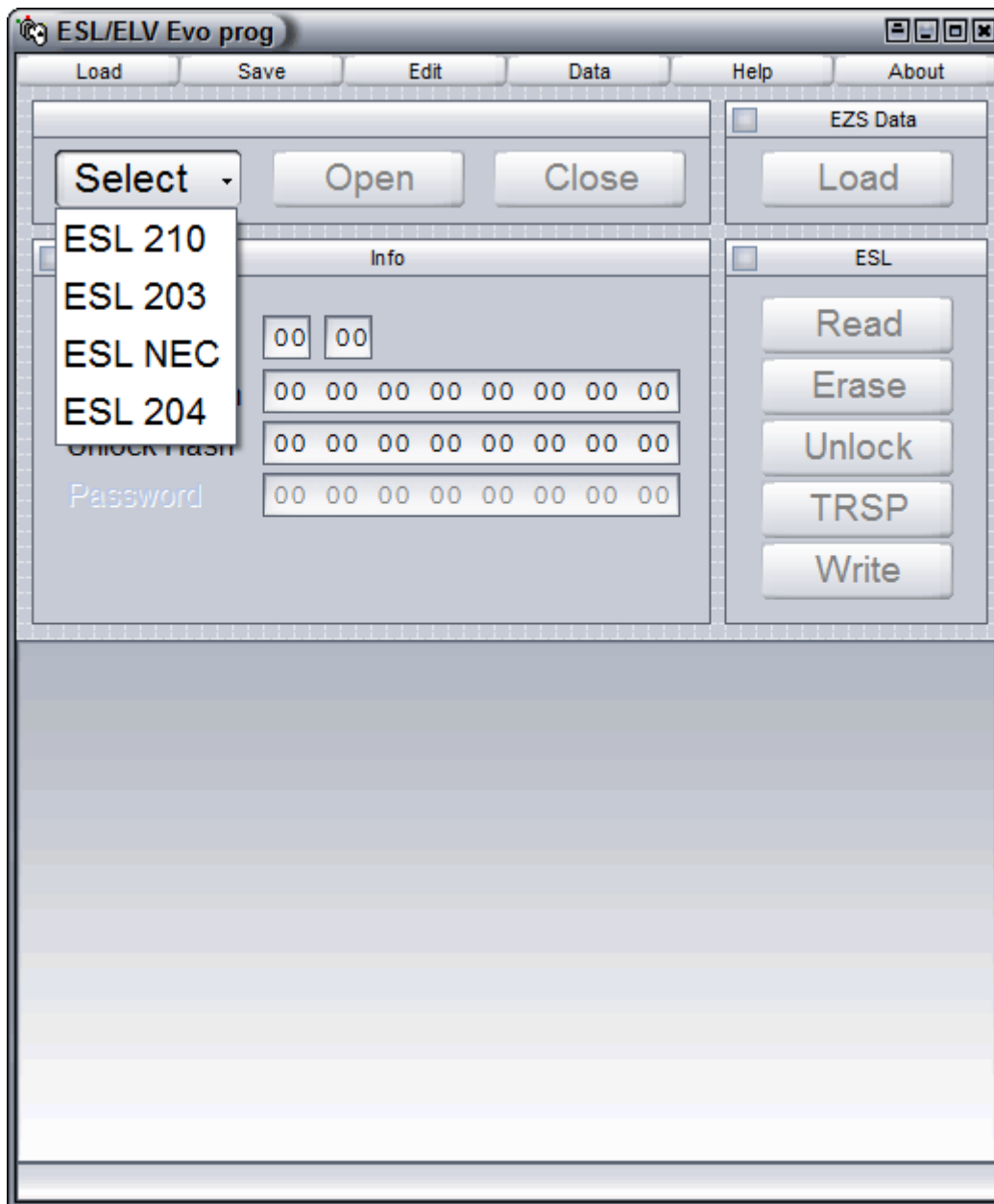
2. Renew of used/programmed W204 – Unlock option.

For ex. we have used programmed ESL/ELV W204 from the car with unknown password.

Connect the MB Keyprog-2 device to USB of your PC, connect ESL/ELV with special W204 K-line cable.



Choose ESL/ELV type with Select option:



SELECT options:

- ESL 210 – for W202, 210, 208 ESL
- ESL 203 – for W203, ESL
- ESL NEC – for Sprinter/Vito, 211 etc. ESL/ELV with NEC
- ESL 204 – for W204/207/212 ESL/ELV with NEC

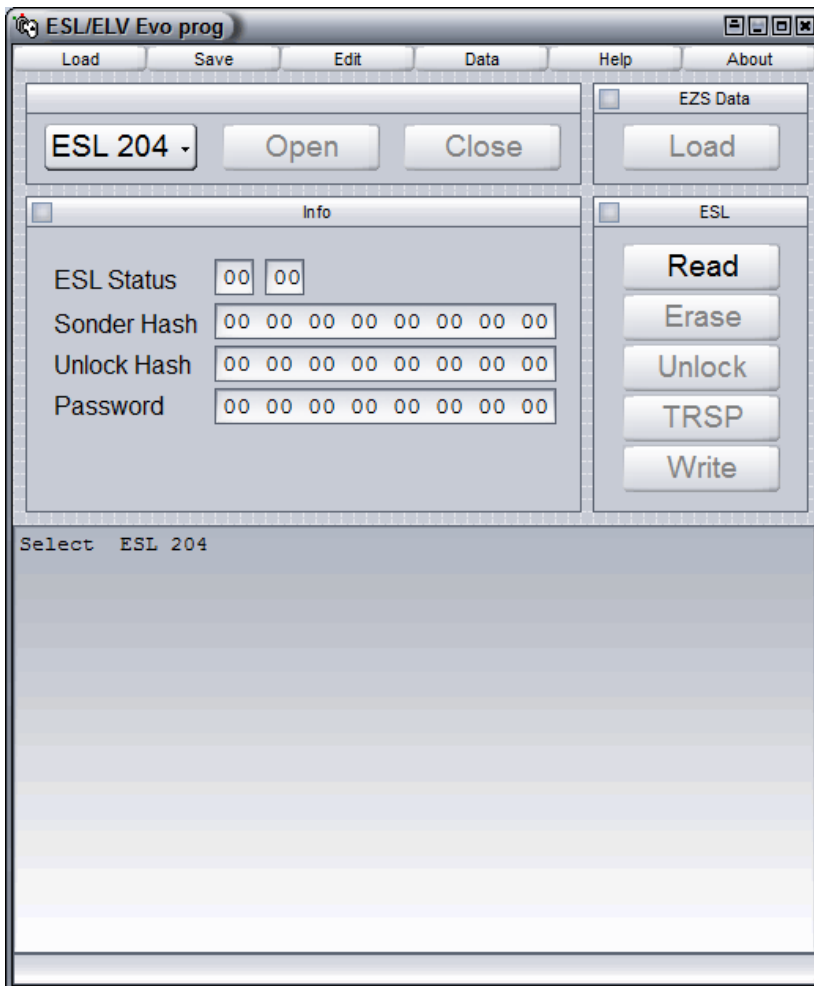


W204

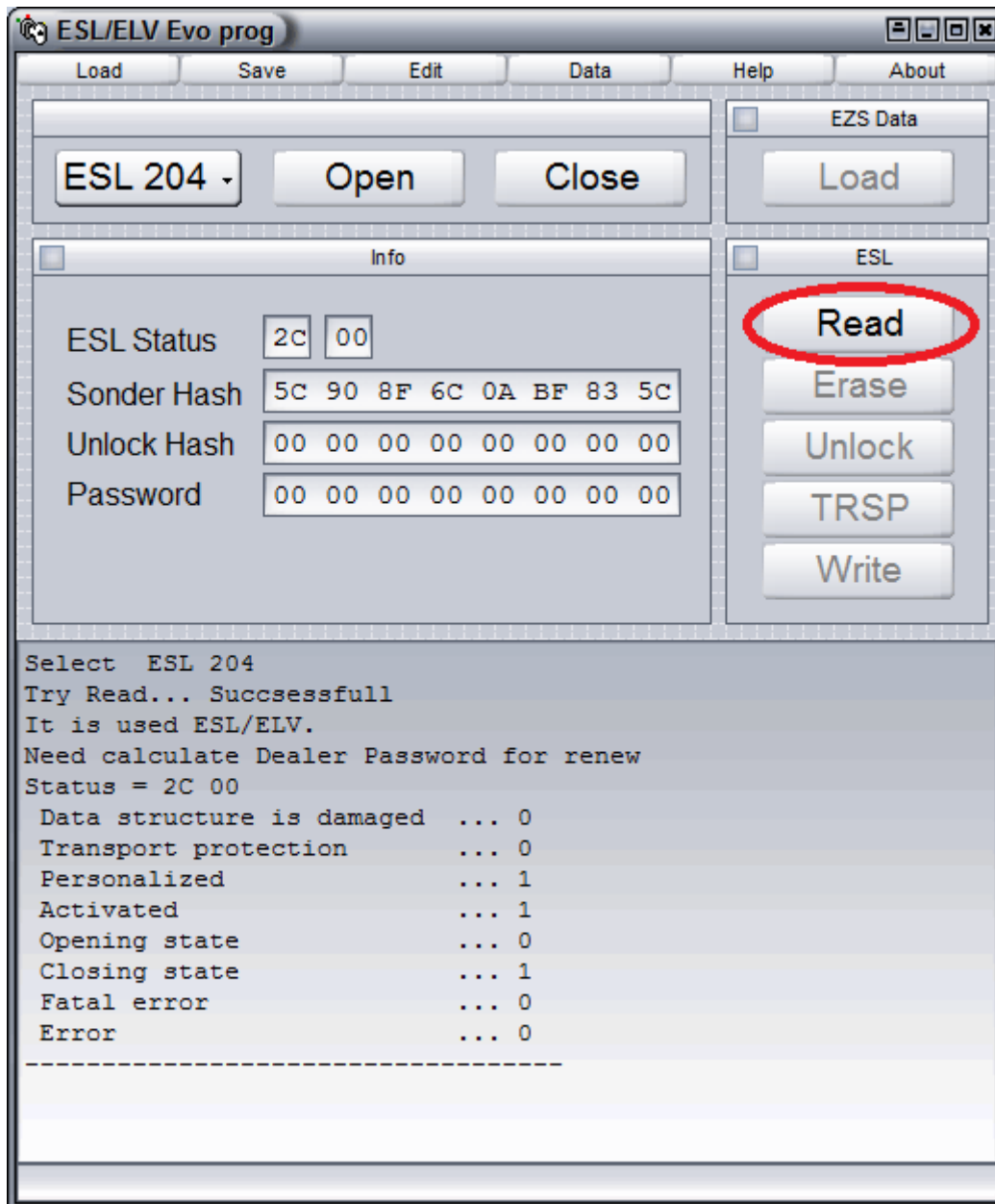
W208/W202/W210



W203/W209/W211



Press READ button. In few seconds you can see id data have been read from connected ESL/ELV:



Data volumes explanations:

It is used ESL/ELV – ESL/ELV is used, programmed.

Need calculate Dealer Password for renew – you have to calculate unlock hash on-line.

Status = 2C 00 – it's status of closed, personalized, activated ESL/ELV.

1C 00 – it's status of opened, personalized, activated ESL/ELV.

2C AA – it's status of closed, personalized, activated ESL/ELV with fatal fault code – we can't renew it through the diagnostics.

1C AA - it's status of opened, personalized, activated ESL/ELV with fatal fault code – we can't renew it through the diagnostics.

Data structure is damaged – 0 – NO, 1 – YES.

Transport protection – 0 – OFF, 1 – ON.

Personalized – 0 – NO, 1 – YES.

Activated – 0 – NO, 1 – YES.

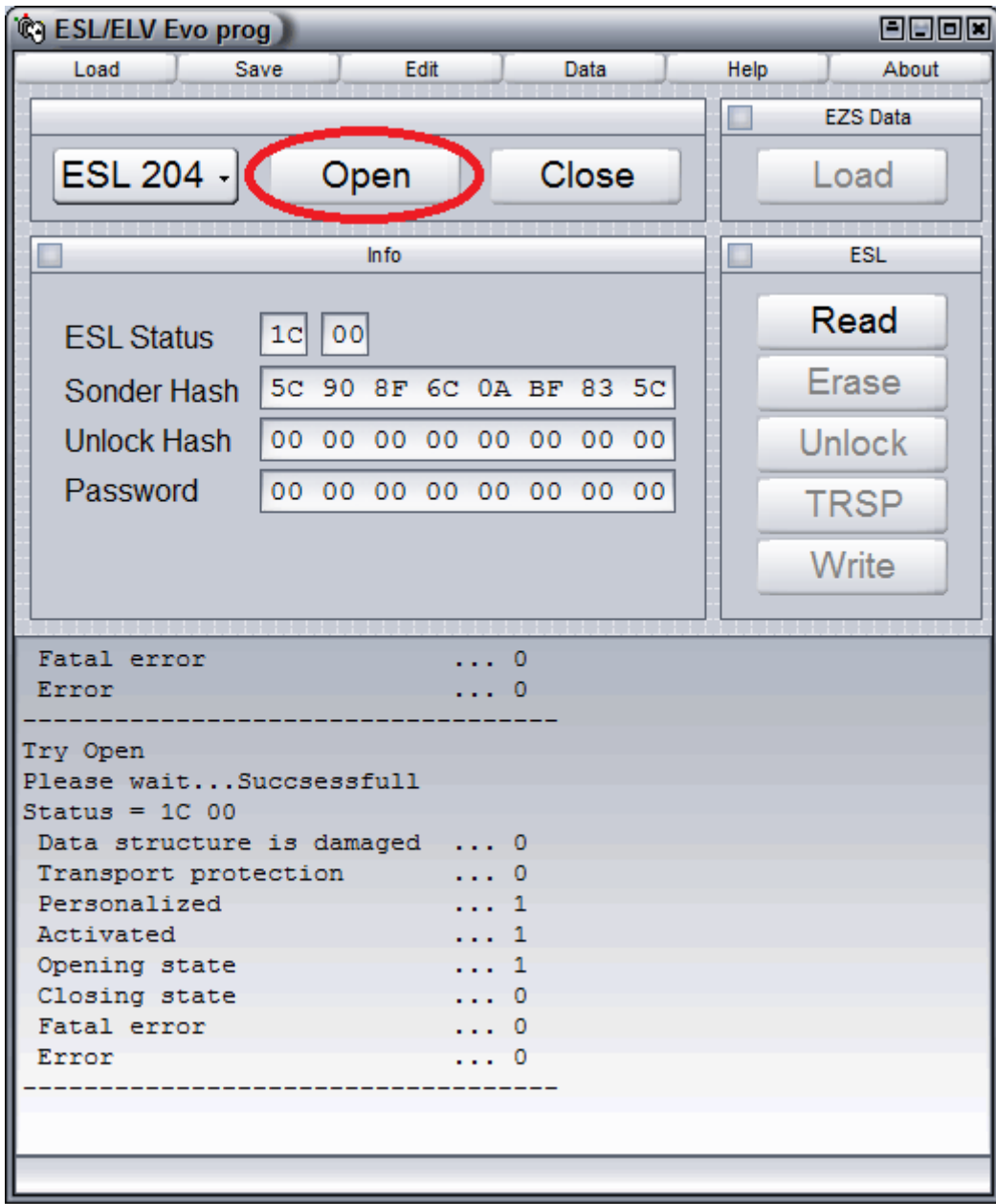
Opening state – 0 – NO, 1 – YES.

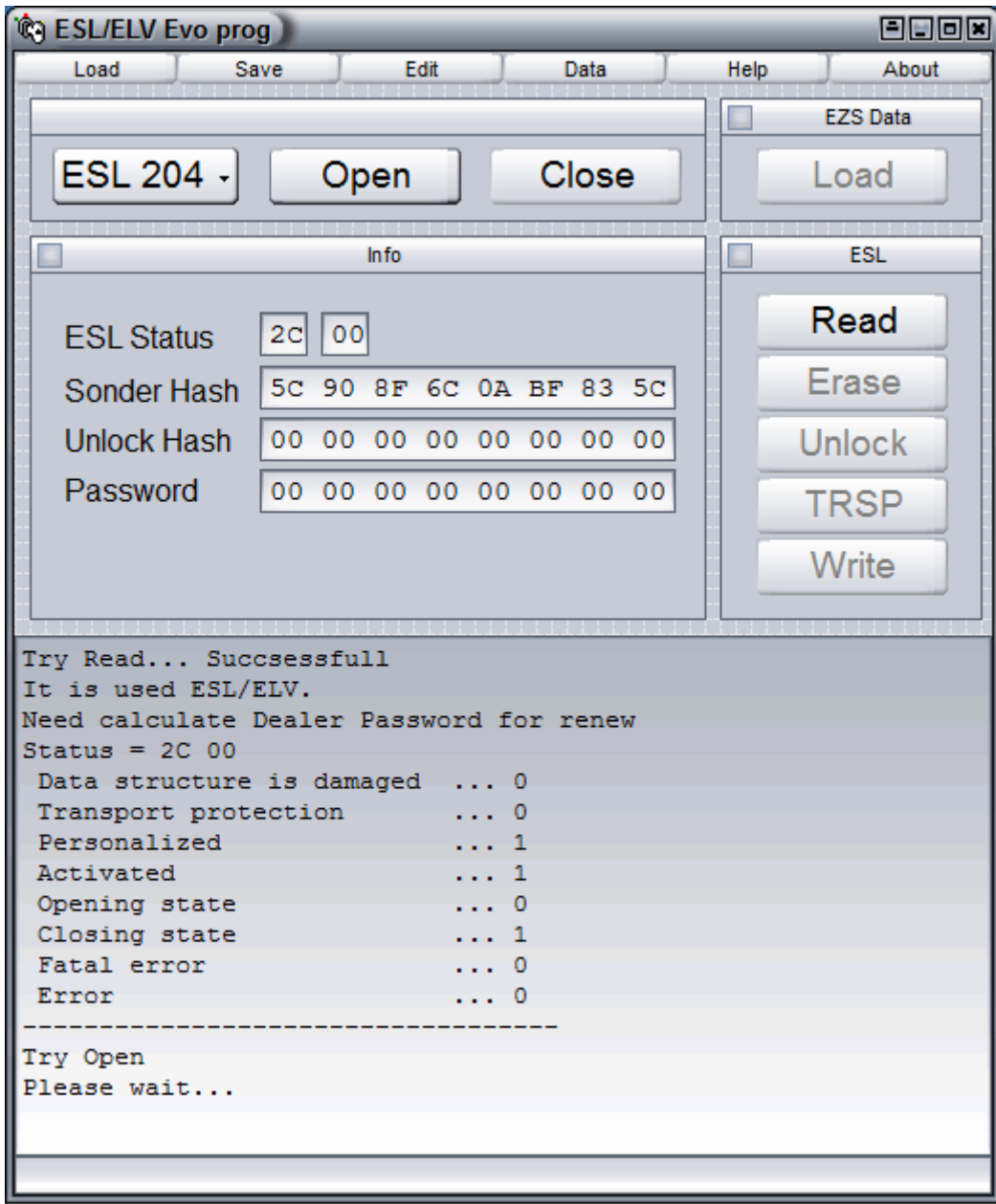
Closing state – 0 – NO, 1 – YES.

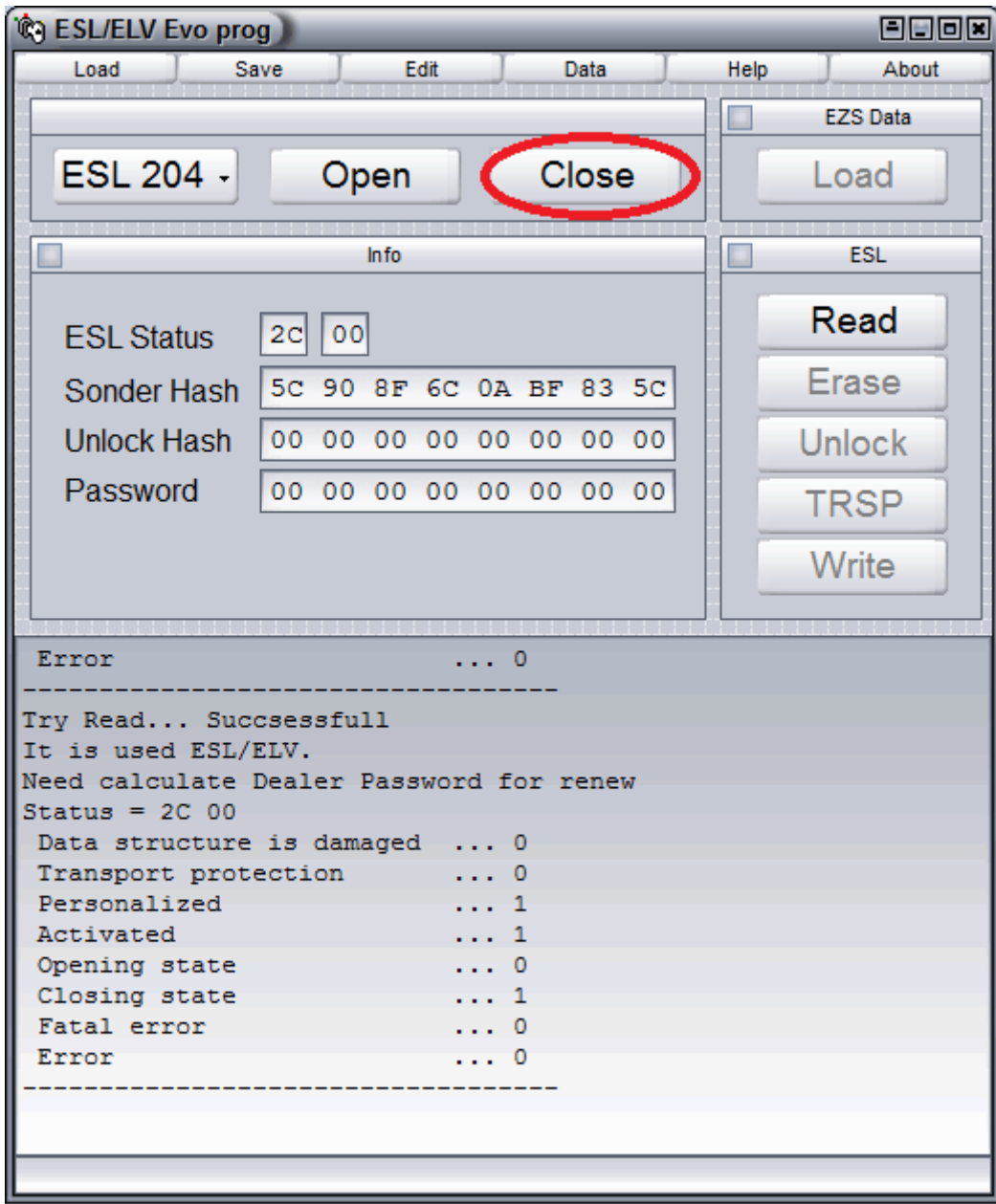
Fatal error – ESL/ELV with fatal fault code - 0 – NO, 1 – YES.

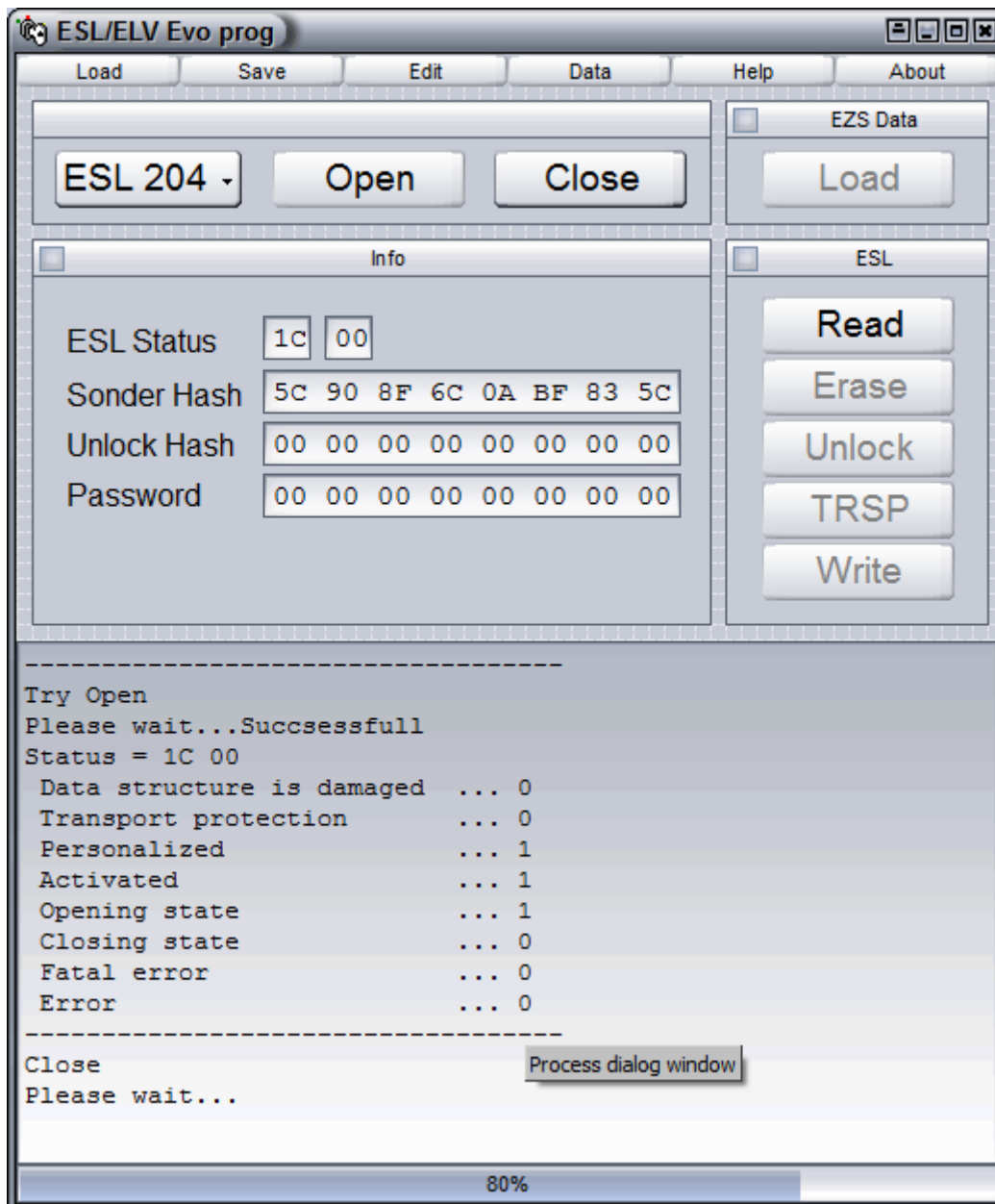
Error – saved fault codes - 0 – NO, 1 – YES.

Now we can test ESL/ELV lock's working. Press Open button to open lock, press Close button to close lock.



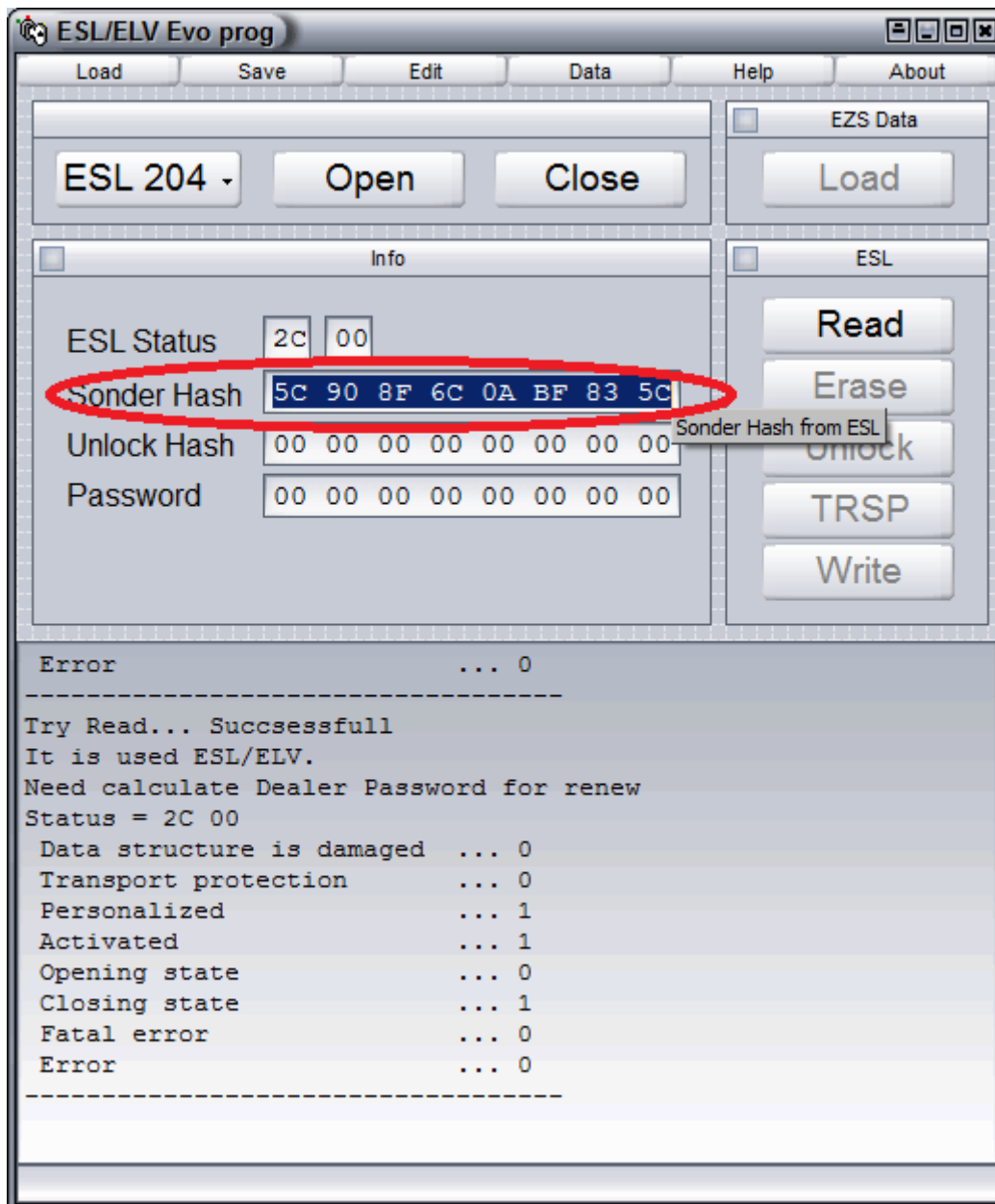






After every operation you can check reports in the information window of the software.

To renew this ESL/ELV you have to calculate unlock hash. Copy Sonder Hash:



Go to www.sonderhash.com

Log in or do registration:

Sonder hash service

Sign-In

If you are **registered user** please sign in.

Email:

Password:

Sign In

Register Account

In order to get hashes and online services you have to be registered user. Registration **cost: 300 €**. After registration you will be provided **3 free credits**. With those credits you will be able to get **3 free calculations**. Please register your account:

Email:

Password:

Confirm Password:

Register

Choose GET HASH option:

Sonder hash service

Welcome You have **88** credits. [Logout](#)

GET HASH

SERVICES

You can add more credits to your account

GET CREDITS

Paste sonder hash volume to Hash line. Press Submit button.

Sonder hash service

Welcome, XXXXXXXXXX You have **88** credits. [Logout](#)

[Home](#) → [Get Hash](#)

The best place to look for Hash

Hash:

You get result within few seconds – it's Unlock Hash. Copy it.

Sonder hash service

Welcome, XXXXXXXXXX You have **87** credits. [Logout](#)

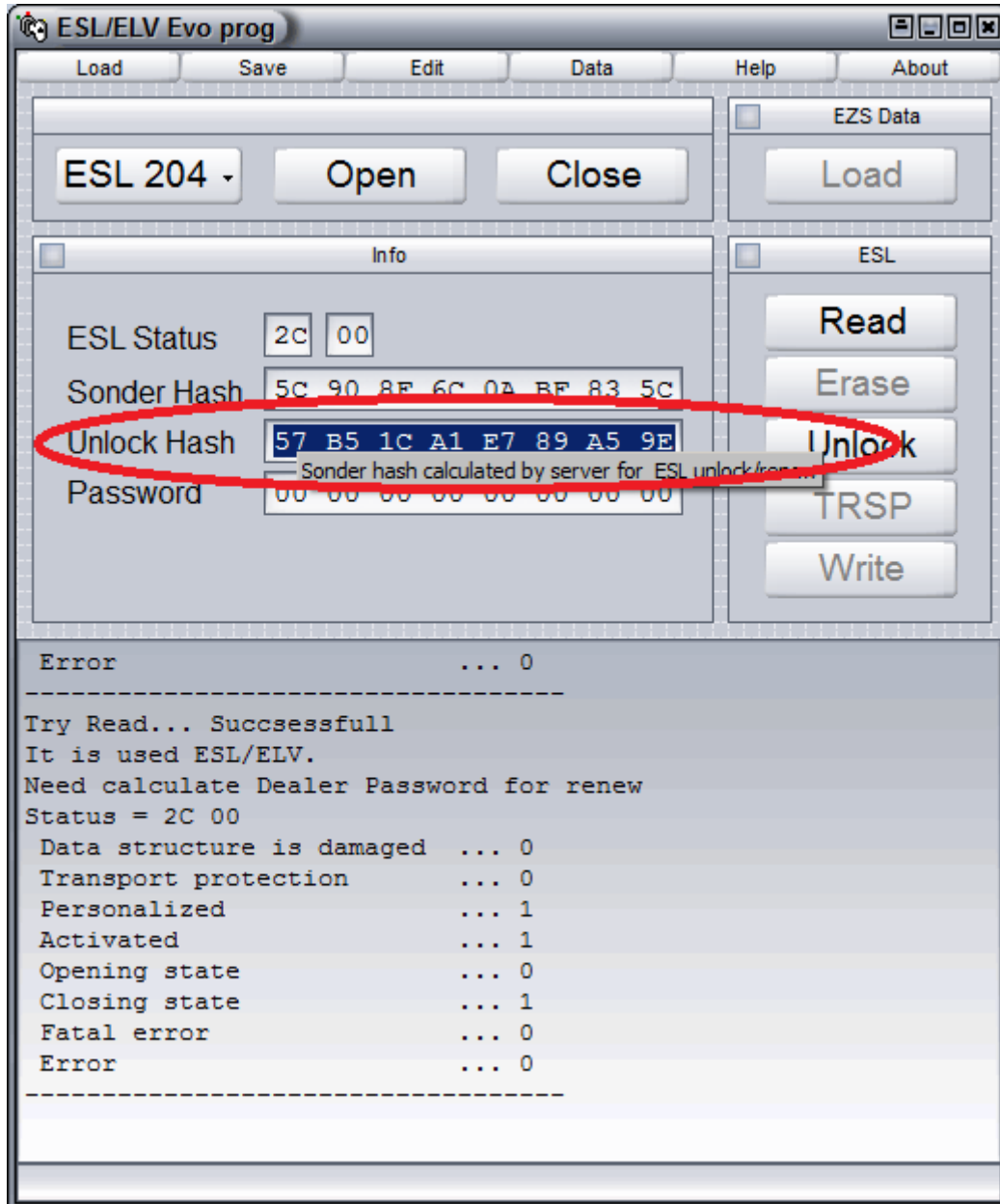
[Home](#)

Payment Successful!

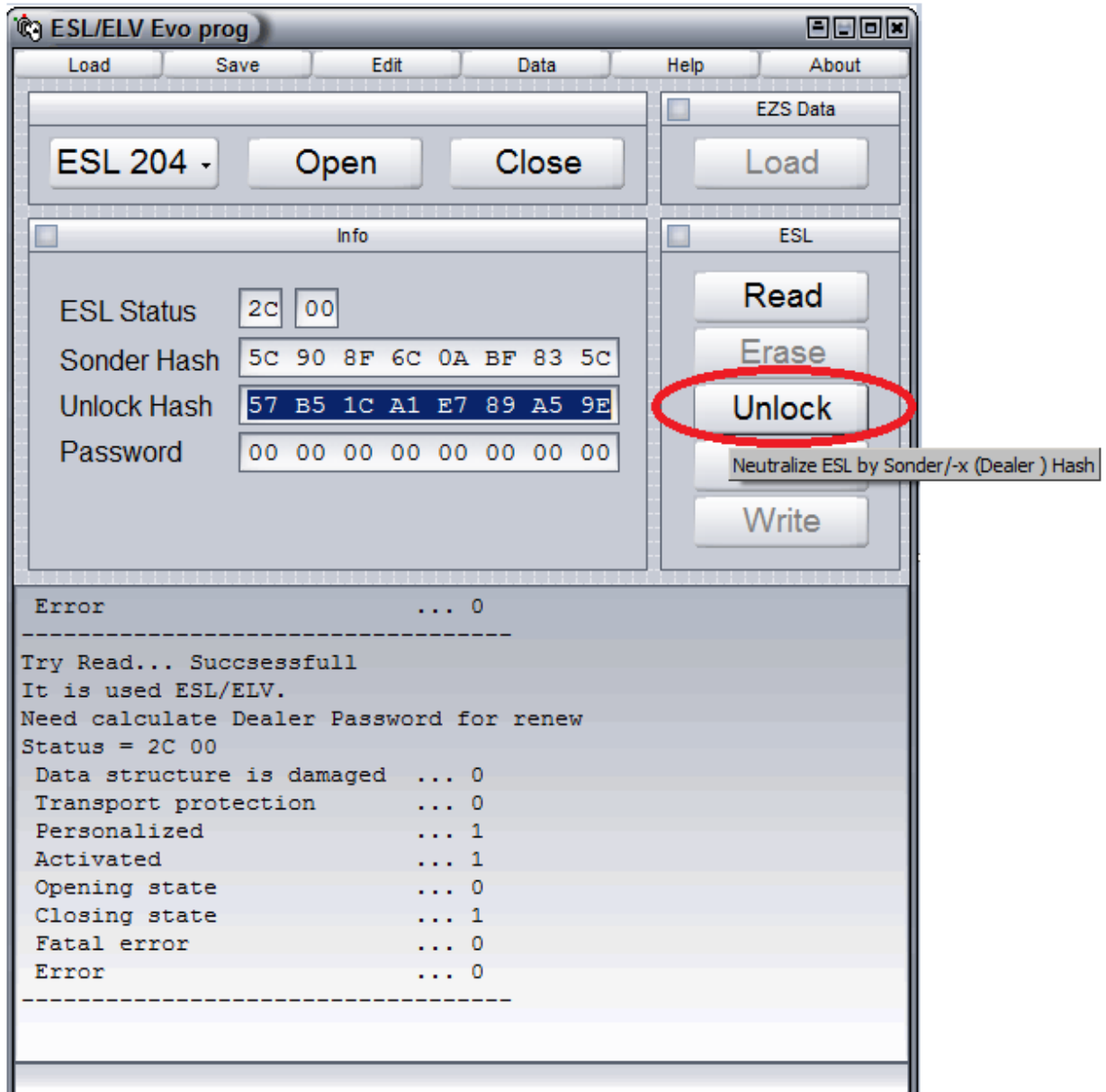
This is your calculated hash:

57B51CA1E789A59E

Paste unlock hash to according line of ESL/ELV Evo prog software.



Now Unlock button is active. Press it to renew the ESL/ELV.



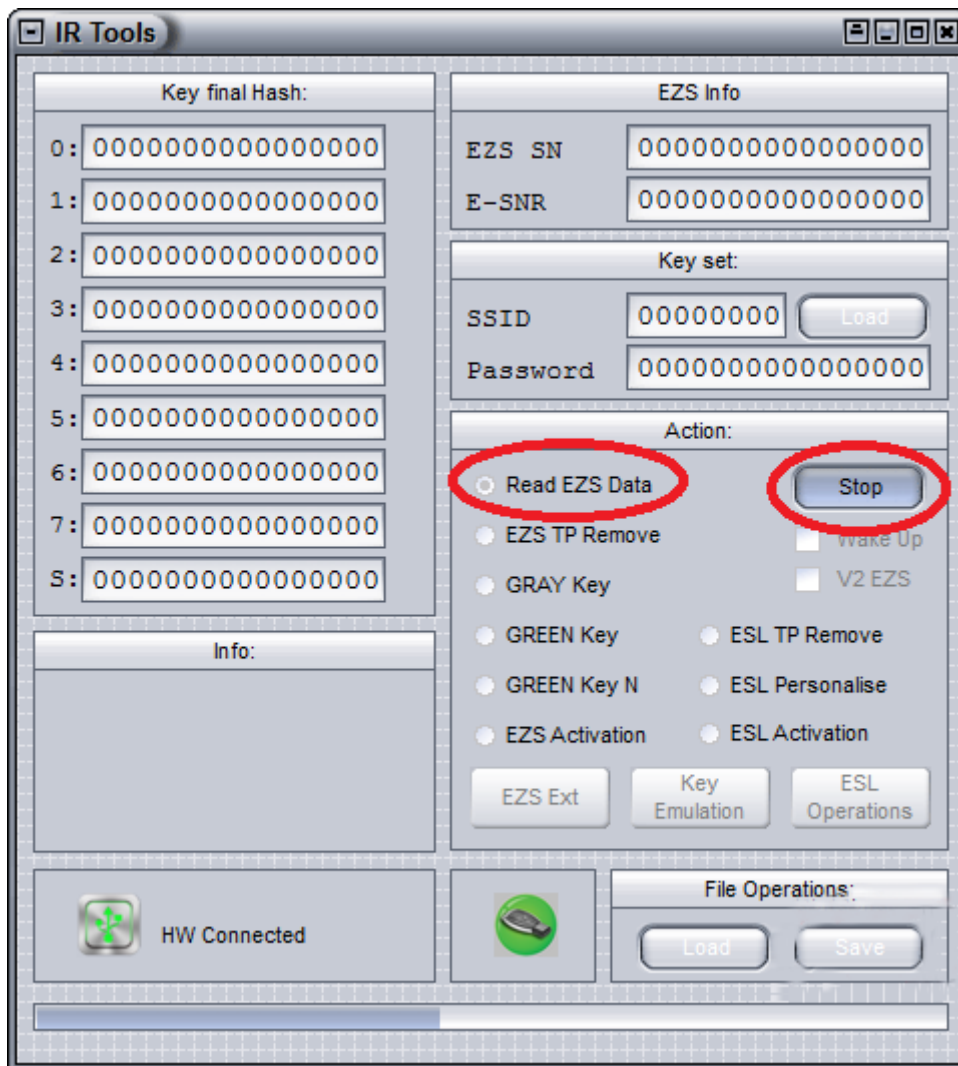
ID data of ESL/ELV are refreshing after every operation. But now we suggest to press Read button to doublecheck if the ESL/ELV is new now.

Personalized and Activated statuses should become as 0.

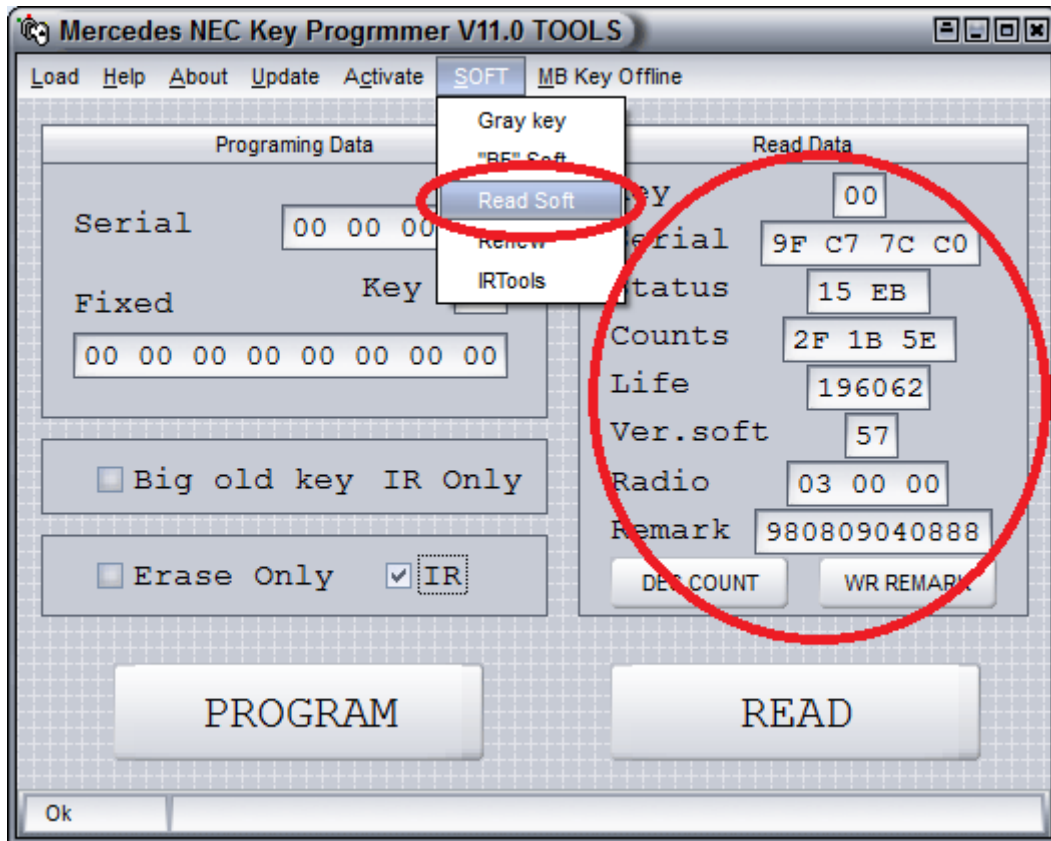
Now we can program this ESL/ELV to every suitable car.

3. ESL/ELV programming

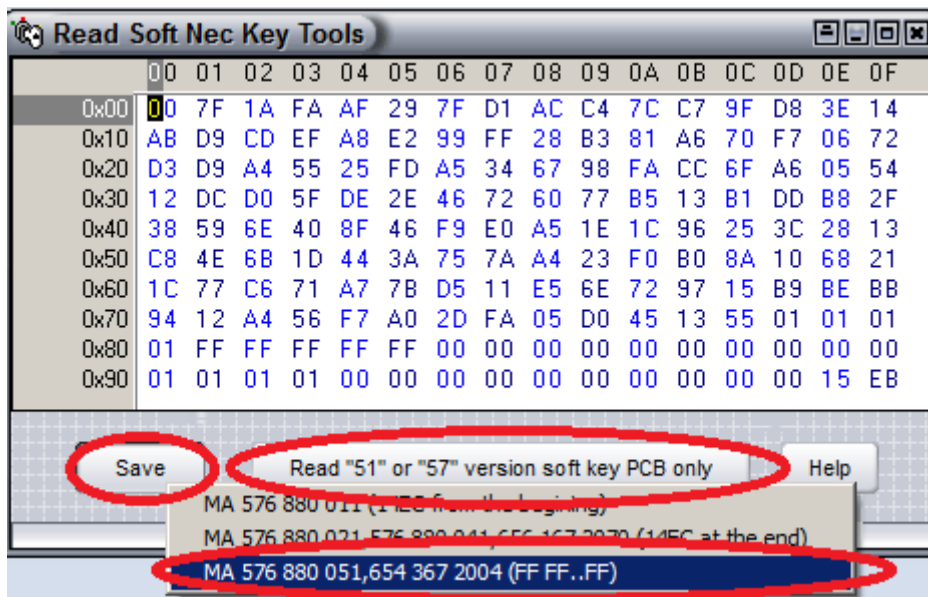
We have to read EZS data and password to program of ESL/ELV. Connect IR Key tool to PC, run IR Tools software. Choose Read EZS Data option. Click GO button. Lines Key Final hash, SSID should be filled with data within few seconds.



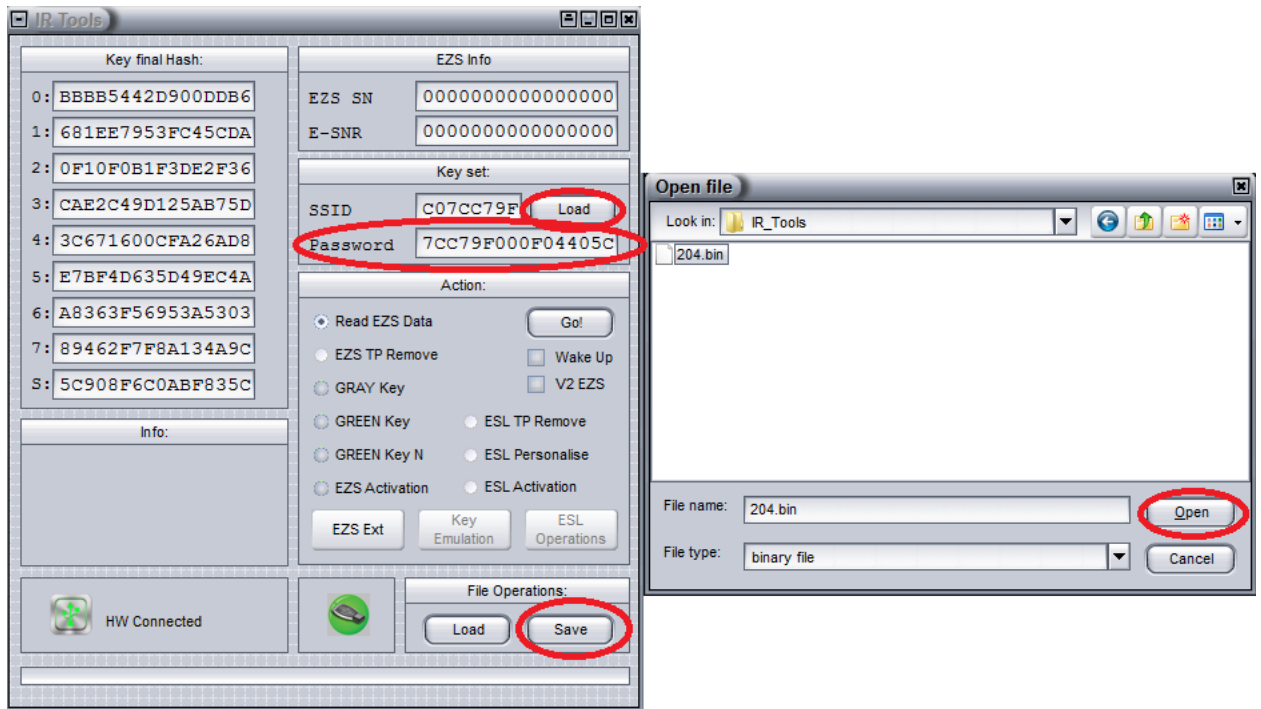
To get a password we have to read working key v.51/57. We use NEC prog v.11/12 for this. Read password from key's NEC processor on PCB – look please instructions for NEC prog v.11 software.



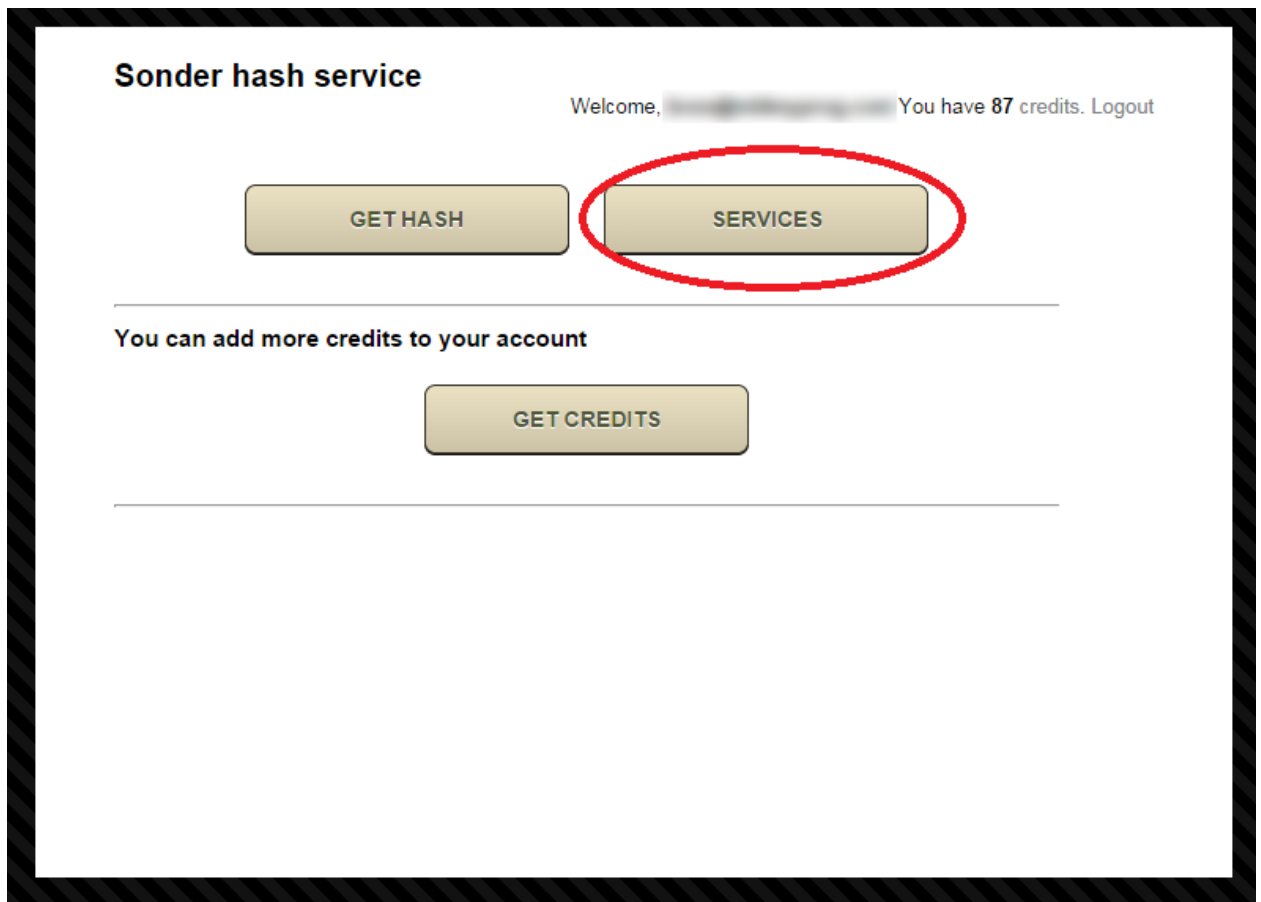
Save key's EEPROM as bin file – version 3.



Load key's file to IR Tools software: Key set – Load – choose file. Password line should to be filled with data. Save result as grnkey file – it has password already.



To create file ready to writing to ESL/ELV through the diagnostics you can send saved grnkey file to www.sonderhash.com , choose options SERVICES - CALCULATORS



Sonder hash service Welcome, [redacted] You have 86 credits. Logout

Home → Services

The best place to look for Hash

CALCULATORS UNLOCK SERVICES

Load grnkey file – ELV Calculator - Choose File – Submit

Sonder hash service Welcome, [redacted] You have 86 credits. Logout

Home → Services → Calculators

The best place to look for Hash

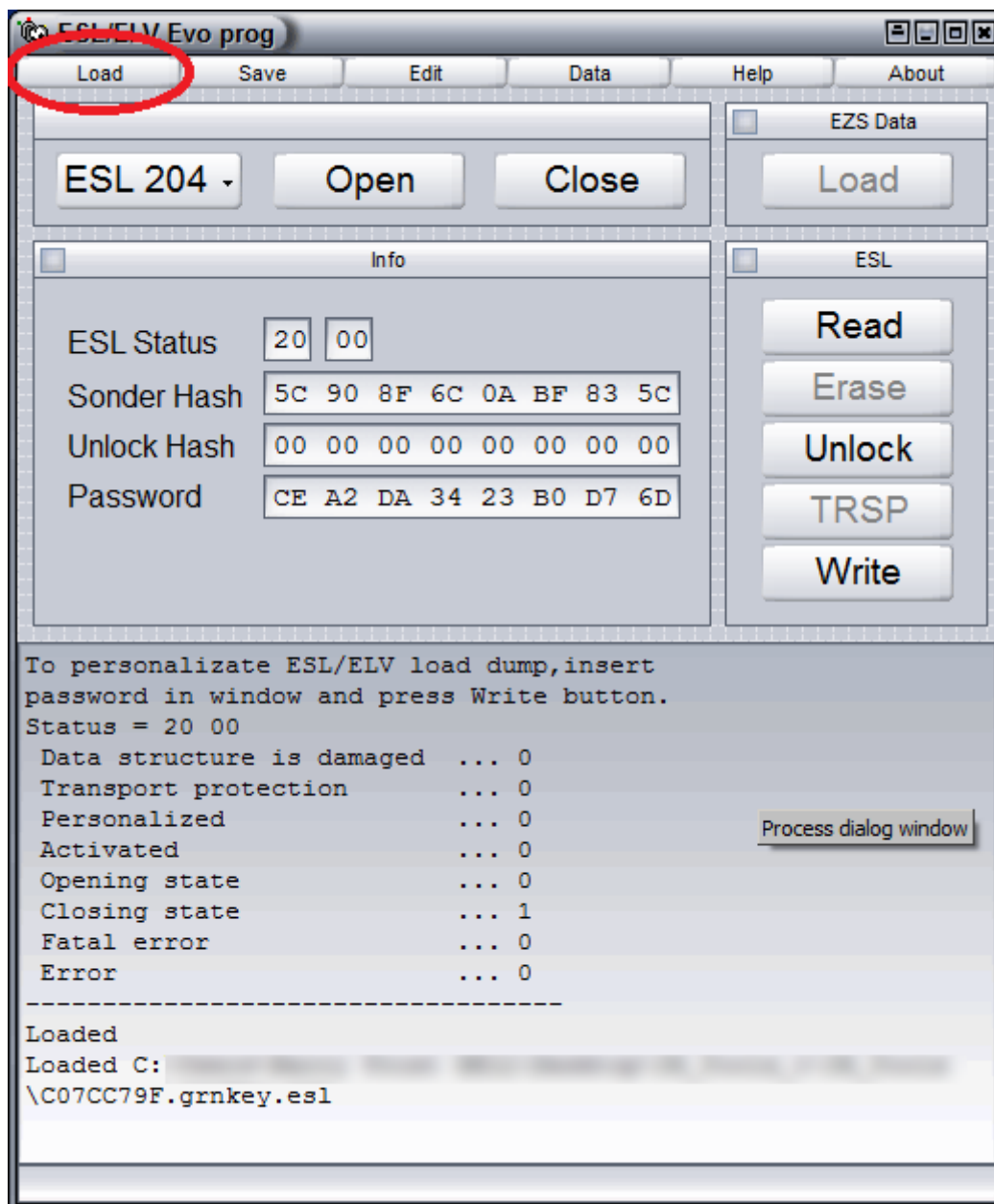
ELV Calculator

Upload File: Choose File 007CC79F.gmkey Submit

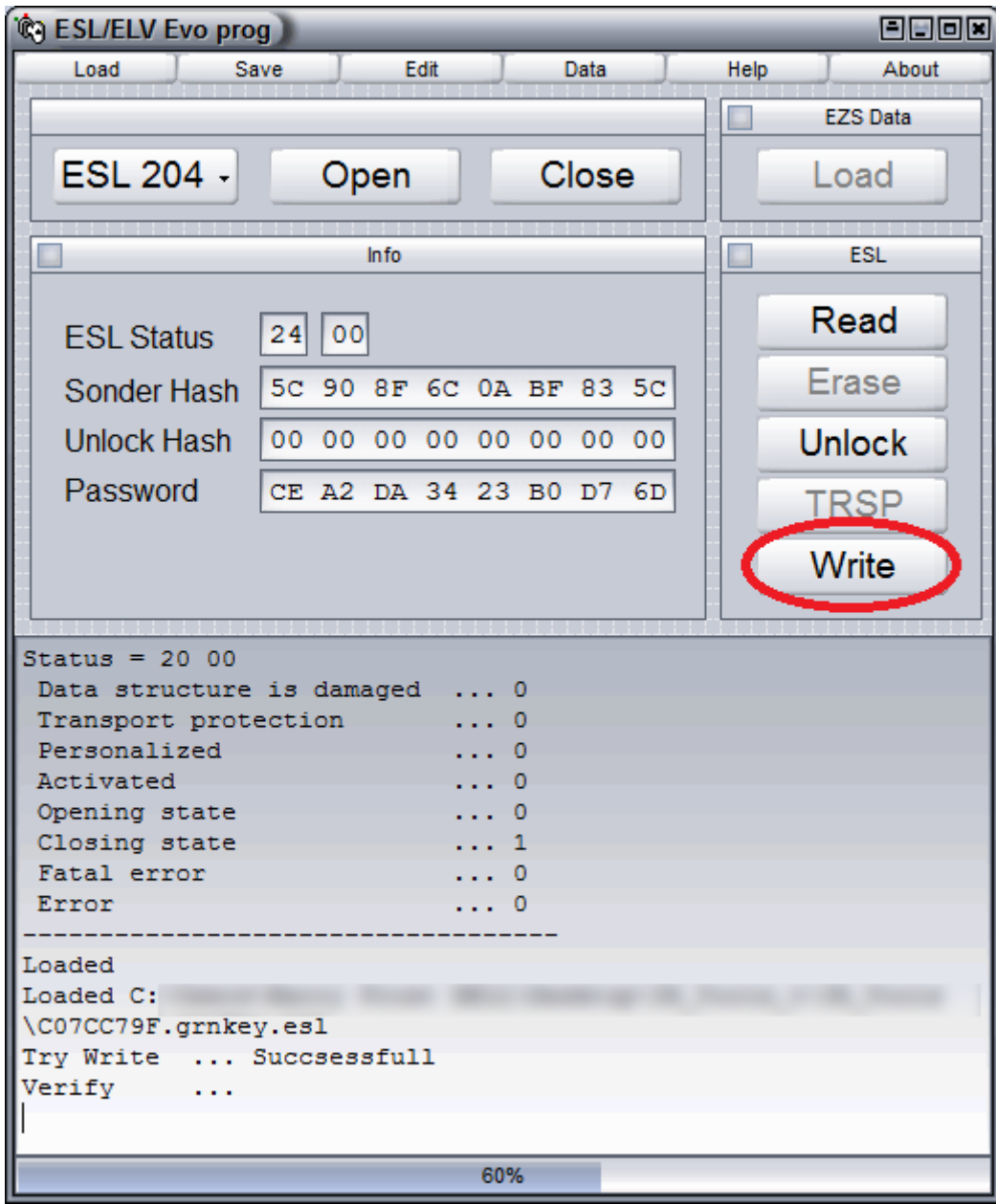
EZS Password Calculator

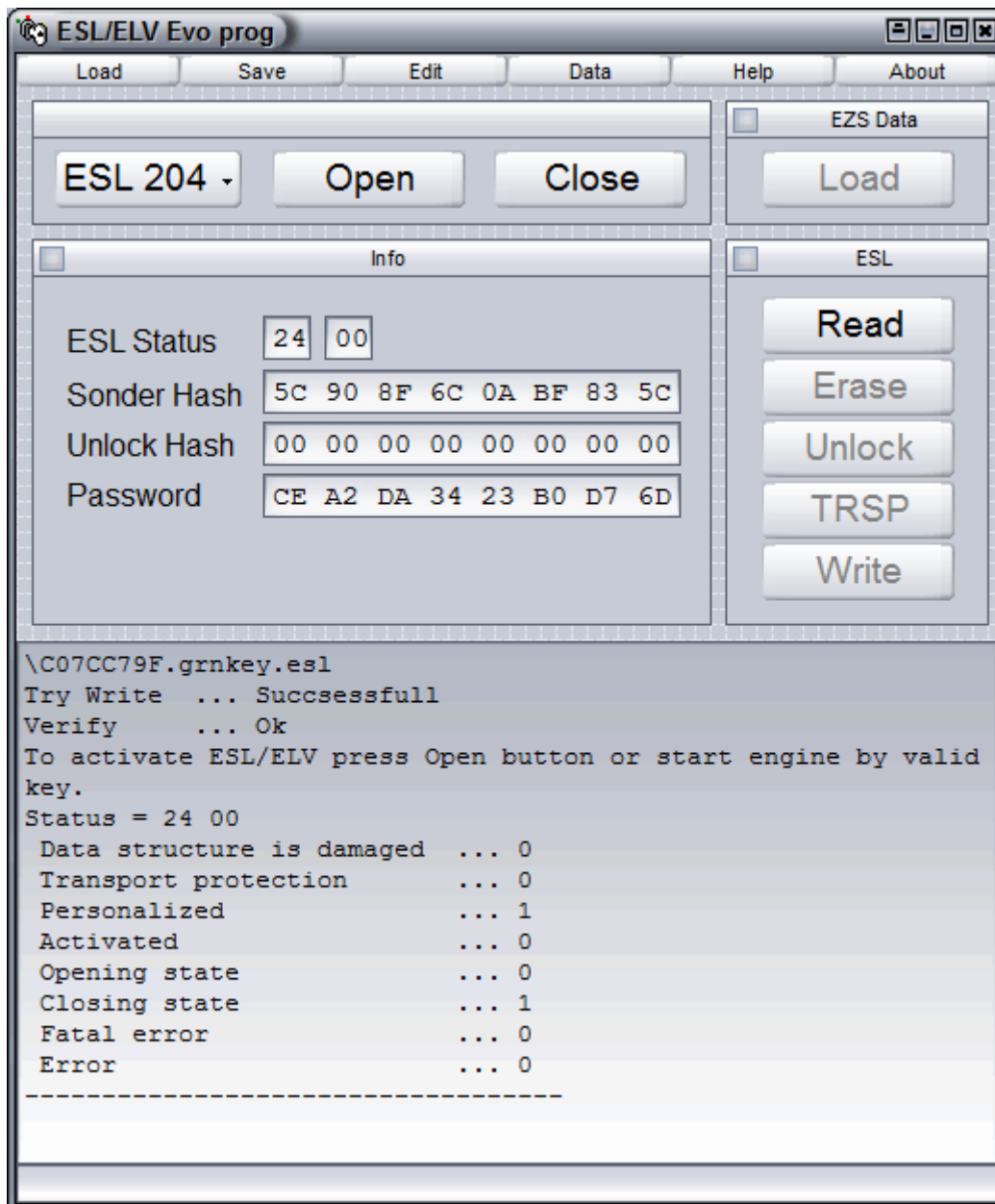
Upload File: Choose File Submit

Appr. in a minute you should to get e-mail from server with new file. Save the file, load it to ESL/ELV Evo prog – Load – choose this file. When you loaded it you can see data in the Password field. Write button become active.

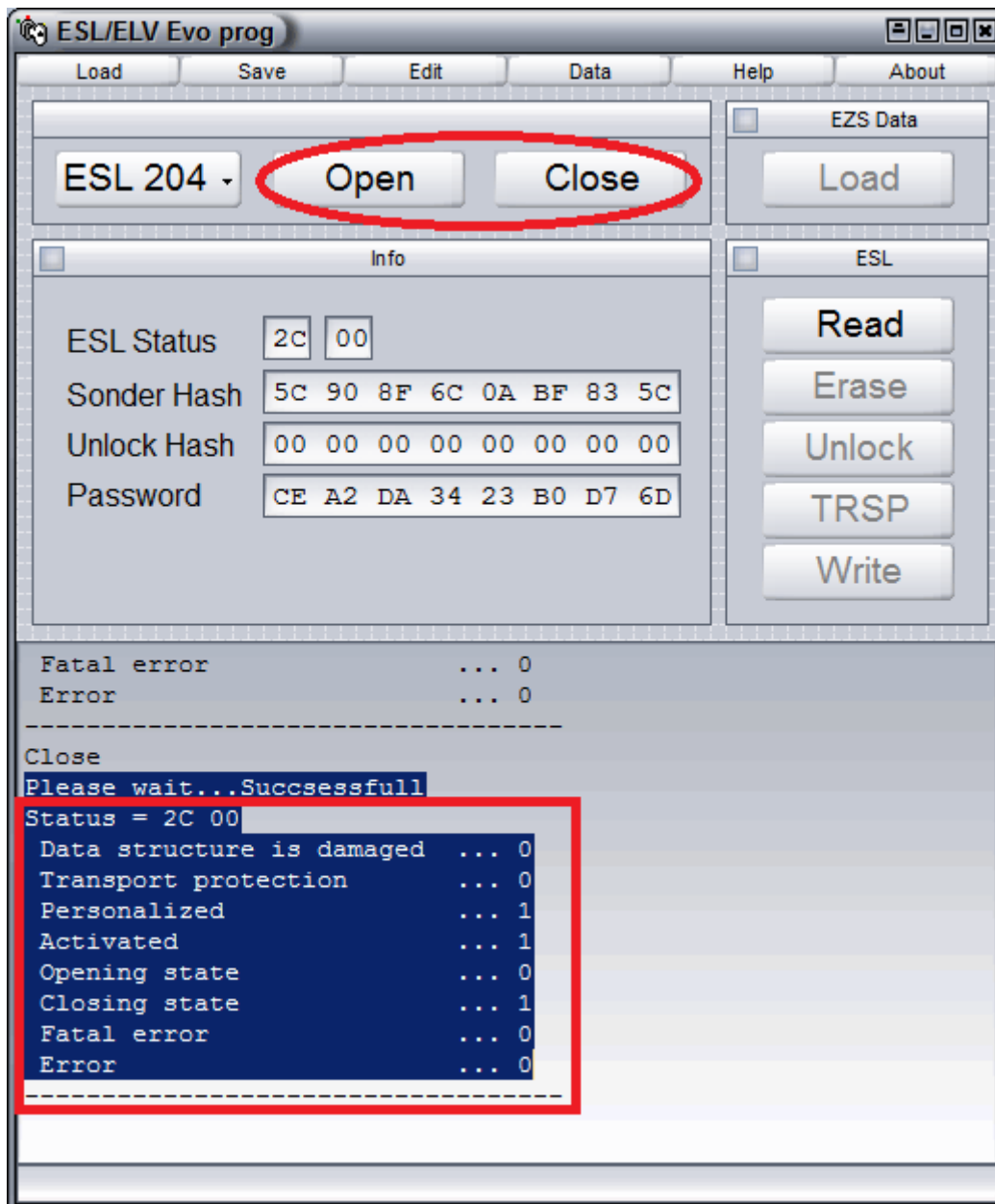


Press Write button to program ESL/ELV





After writing we can activate ESL/ELV at once on table. Press Open button, wait till the lock will be opened, then press Close button, wait till the lock will be closed.



Now we have the ESL/ELV programmed, activated for our car.

IMPORTANT NOTE: RESET POWER 12 V FROM THE ESL BEFORE ESL CONNECTOR UNPLUGING!

If you unplug ESL connector on connected 12 V battery you can damage ESL. Fatal error could be appeared in ESL.

It's ready to be placed to the car.