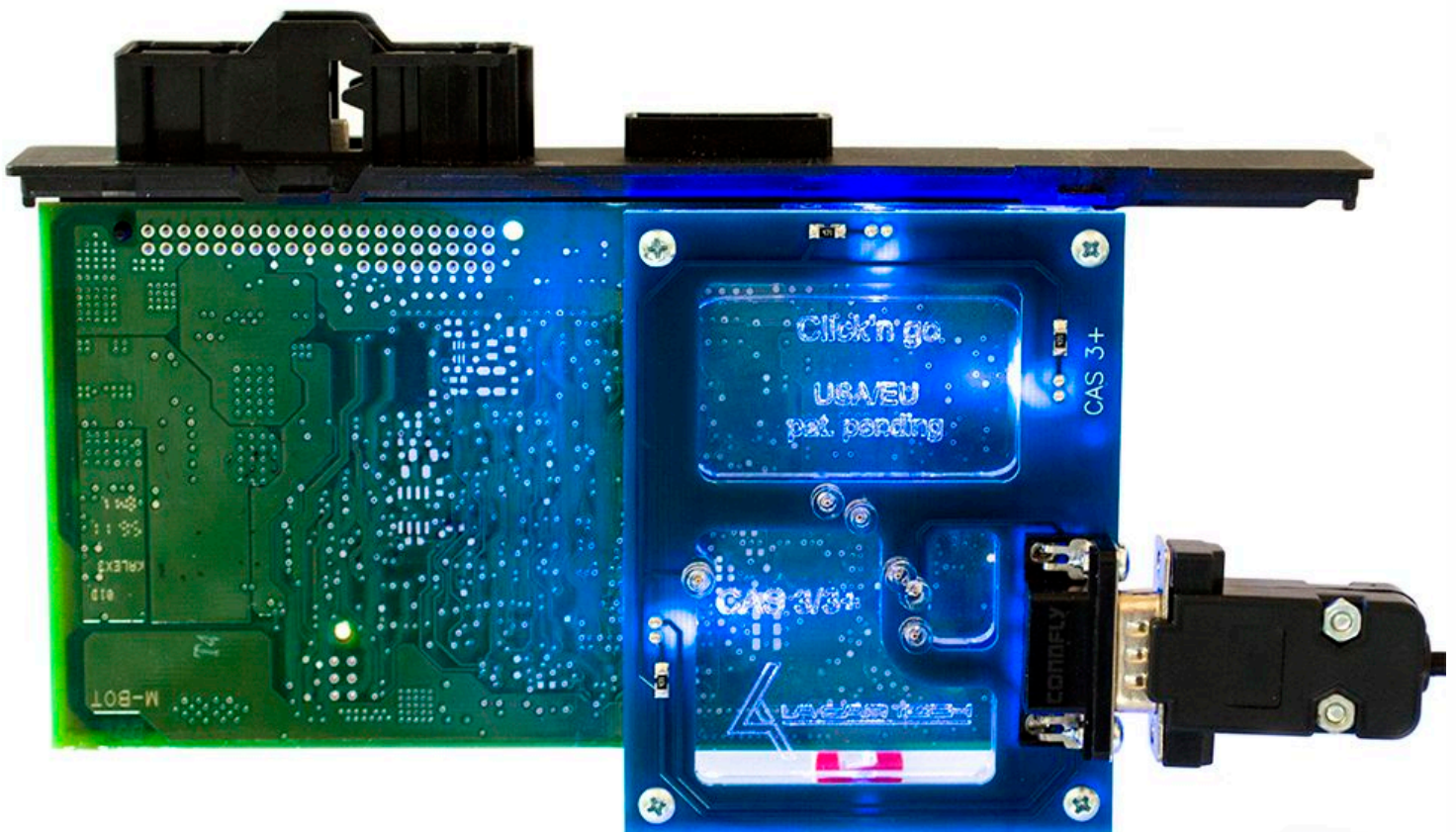


Click'n Go

CAS3 gen Click'n Go Adapter

Works with MBProg Programmer. No soldering required.

Requires to remove varnish layer from the board and board edges!!!



CAS3



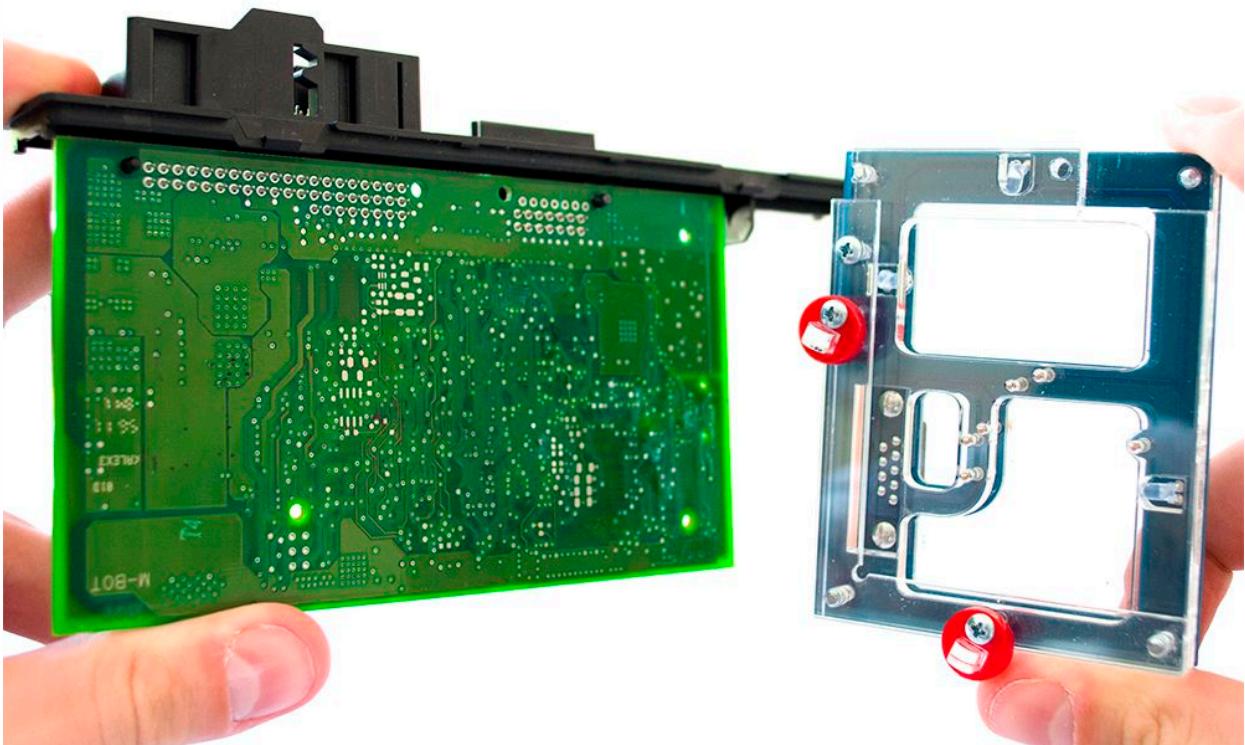
How to connect

Carefully open by pushing in the CAS3 body tabs.



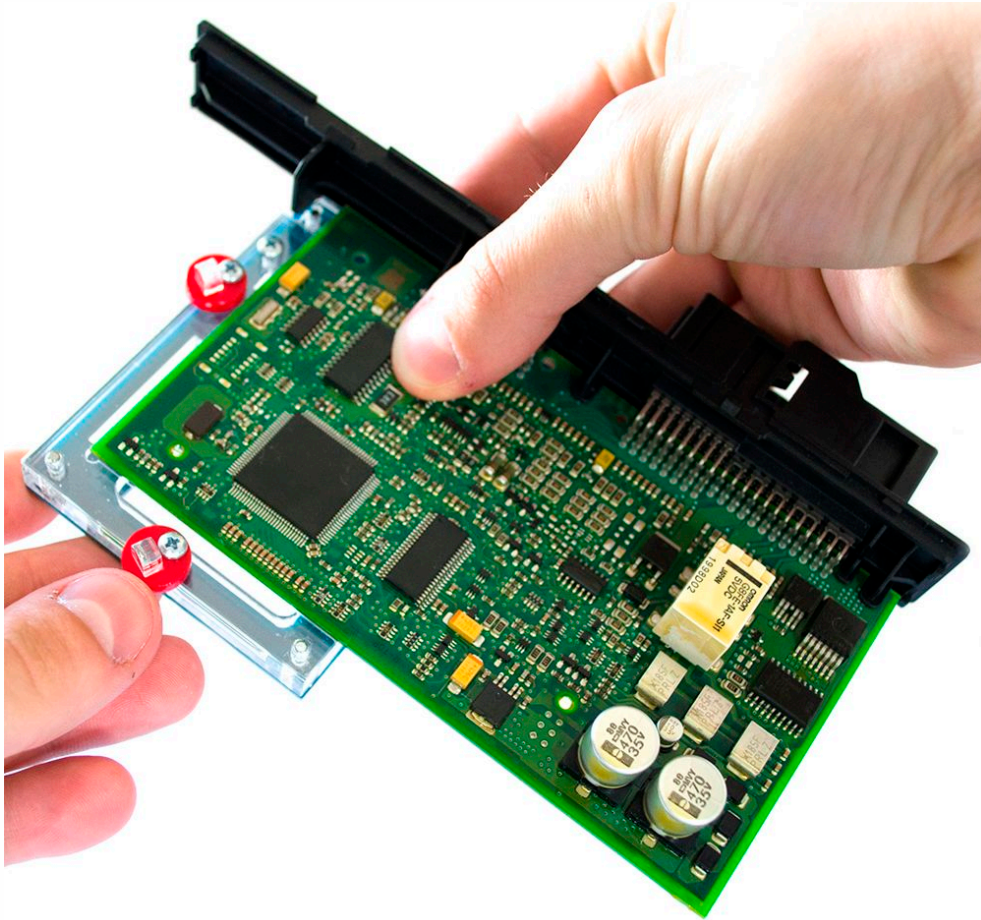
**Remove varnish layer from the board and board edges!!!
If you don't do that, Click'n Go will not work correctly.**

Match the CAS3 board with Click'n Go adapter.

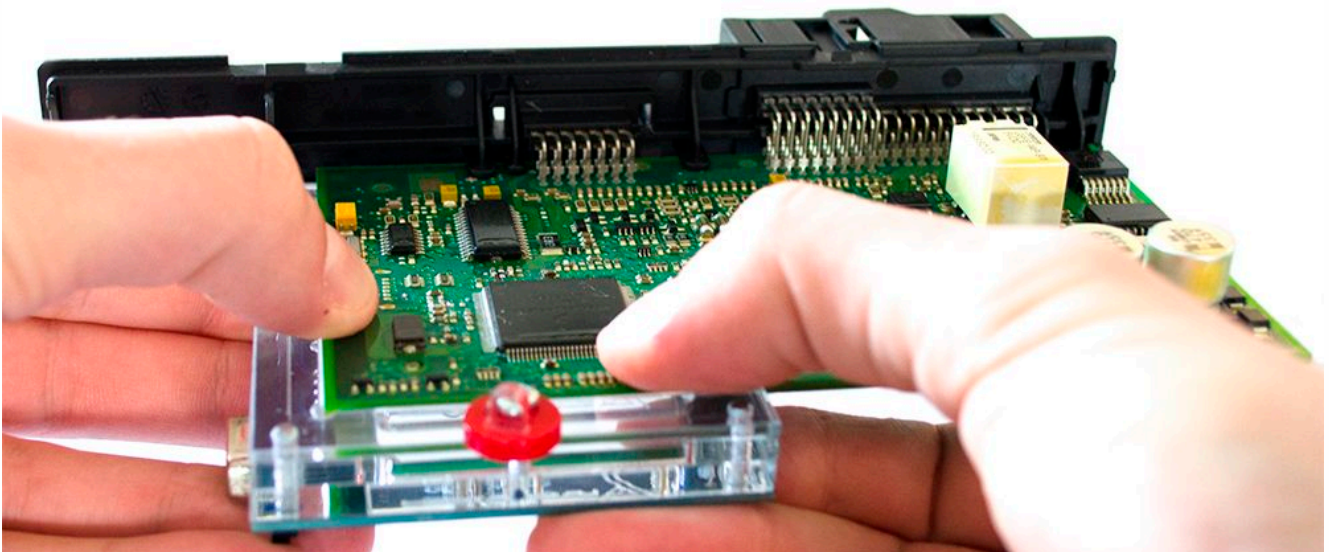


CAS3

Mount CAS3 board on the Click'n Go adapter.

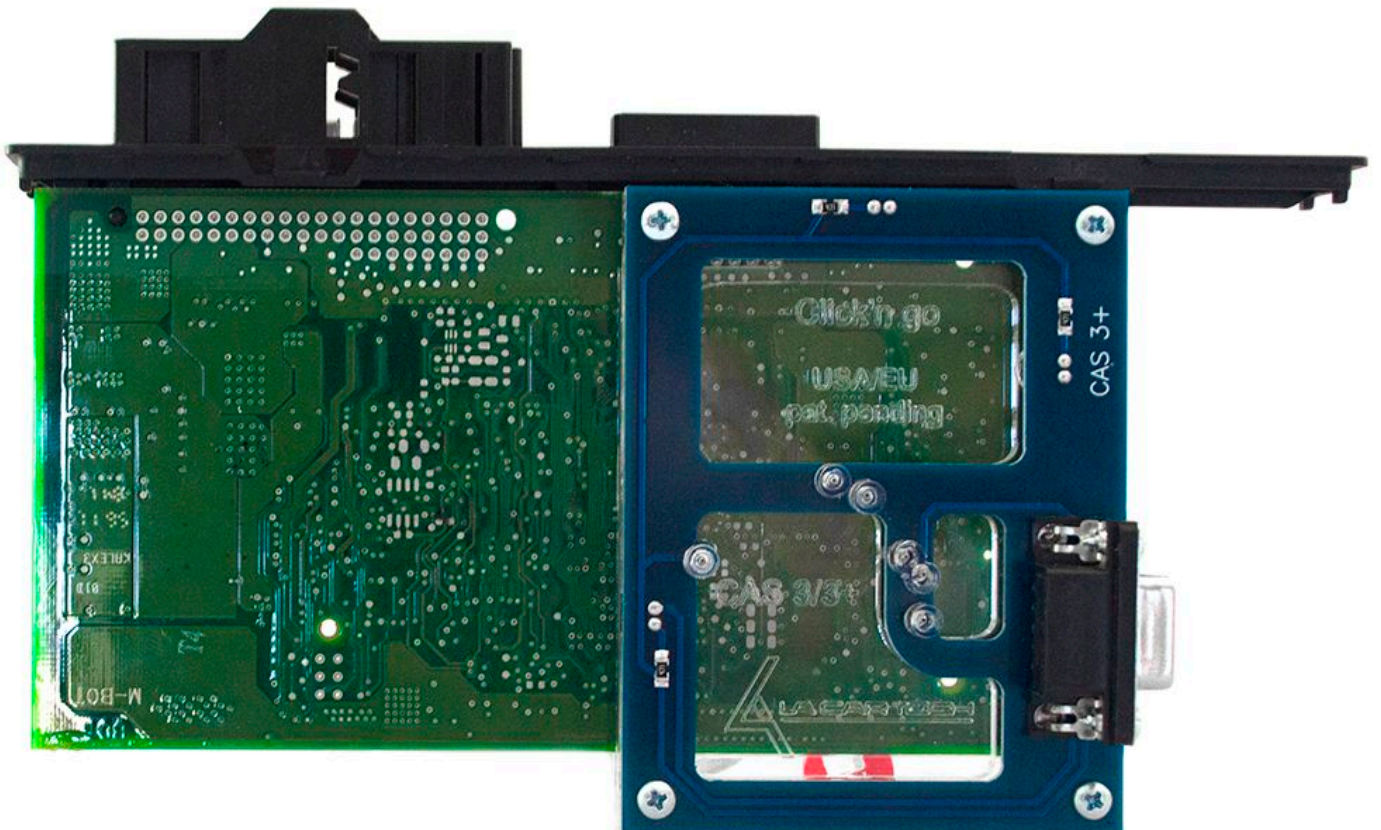
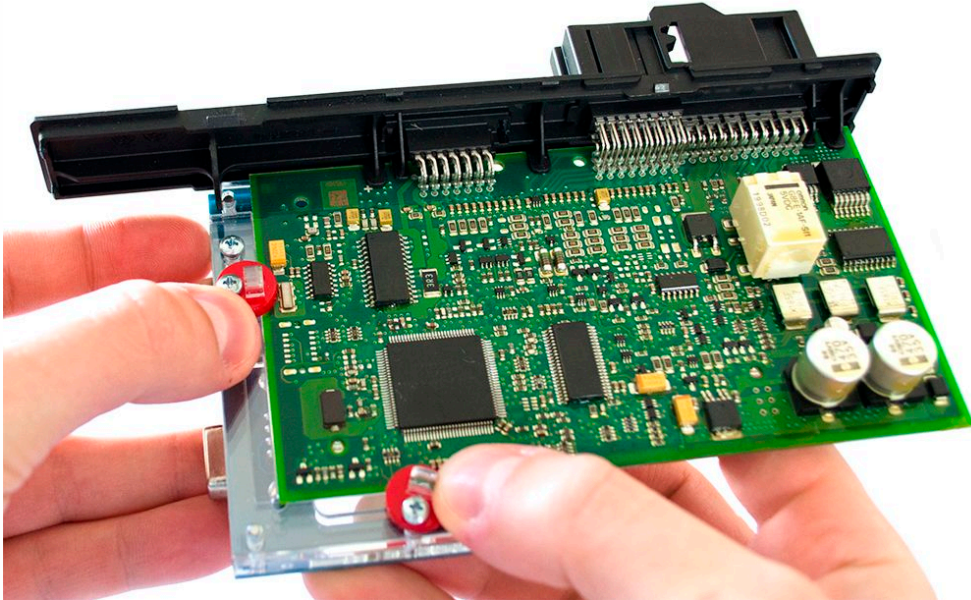


Push down the CAS3 board on to the Click'n Go adapter.
Make sure it's mounted correctly.



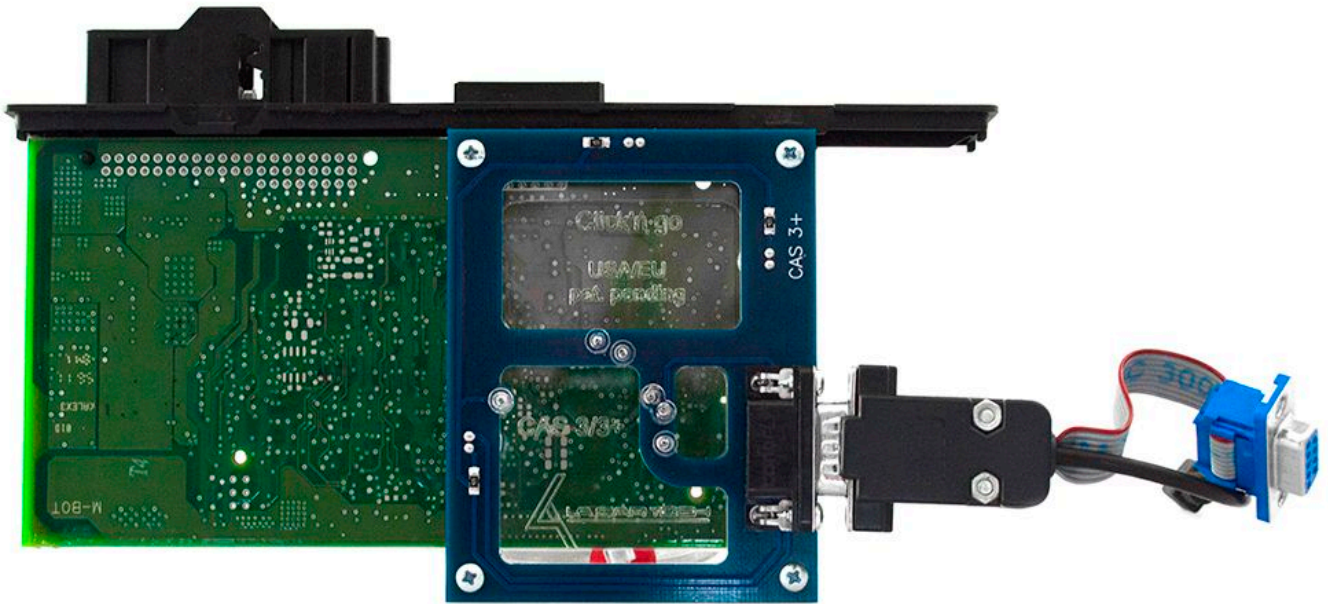
CAS3

Secure CAS3 by turning the Click'n Go safety locks over the board.



CAS3

Connect MBProg 2 Click'n Go cable to Click'n Go adapter



Connect MBProg 2 Click'n Go cable to MBProg
Connect MBProg USB cable to PC and MBProg



CAS3



How to read

Open MBProg software.

Check bottom right corner if your device is correctly connected.

Now click Chip button.

Selected Device: None

	00	01	02	03	04	05	06	07	08	09	0A	0B	0C	0D	0E	0F	01	2	3	4	5	6	7	8	9	A	B	C	D	E	F
0x00	FF	FF	FF	FF	FF	FF	FF	FF	FF	FF	FF	FF	FF	FF	FF	FF
0x10	FF	FF	FF	FF	FF	FF	FF	FF	FF	FF	FF	FF	FF	FF	FF	FF
0x20	FF	FF	FF	FF	FF	FF	FF	FF	FF	FF	FF	FF	FF	FF	FF	FF
0x30	FF	FF	FF	FF	FF	FF	FF	FF	FF	FF	FF	FF	FF	FF	FF	FF
0x40	FF	FF	FF	FF	FF	FF	FF	FF	FF	FF	FF	FF	FF	FF	FF	FF
0x50	FF	FF	FF	FF	FF	FF	FF	FF	FF	FF	FF	FF	FF	FF	FF	FF
0x60	FF	FF	FF	FF	FF	FF	FF	FF	FF	FF	FF	FF	FF	FF	FF	FF
0x70	FF	FF	FF	FF	FF	FF	FF	FF	FF	FF	FF	FF	FF	FF	FF	FF
0x80	FF	FF	FF	FF	FF	FF	FF	FF	FF	FF	FF	FF	FF	FF	FF	FF
0x90	FF	FF	FF	FF	FF	FF	FF	FF	FF	FF	FF	FF	FF	FF	FF	FF
0xA0	FF	FF	FF	FF	FF	FF	FF	FF	FF	FF	FF	FF	FF	FF	FF	FF
0xB0	FF	FF	FF	FF	FF	FF	FF	FF	FF	FF	FF	FF	FF	FF	FF	FF
0xC0	FF	FF	FF	FF	FF	FF	FF	FF	FF	FF	FF	FF	FF	FF	FF	FF
0xD0	FF	FF	FF	FF	FF	FF	FF	FF	FF	FF	FF	FF	FF	FF	FF	FF
0xE0	FF	FF	FF	FF	FF	FF	FF	FF	FF	FF	FF	FF	FF	FF	FF	FF
0xF0	FF	FF	FF	FF	FF	FF	FF	FF	FF	FF	FF	FF	FF	FF	FF	FF

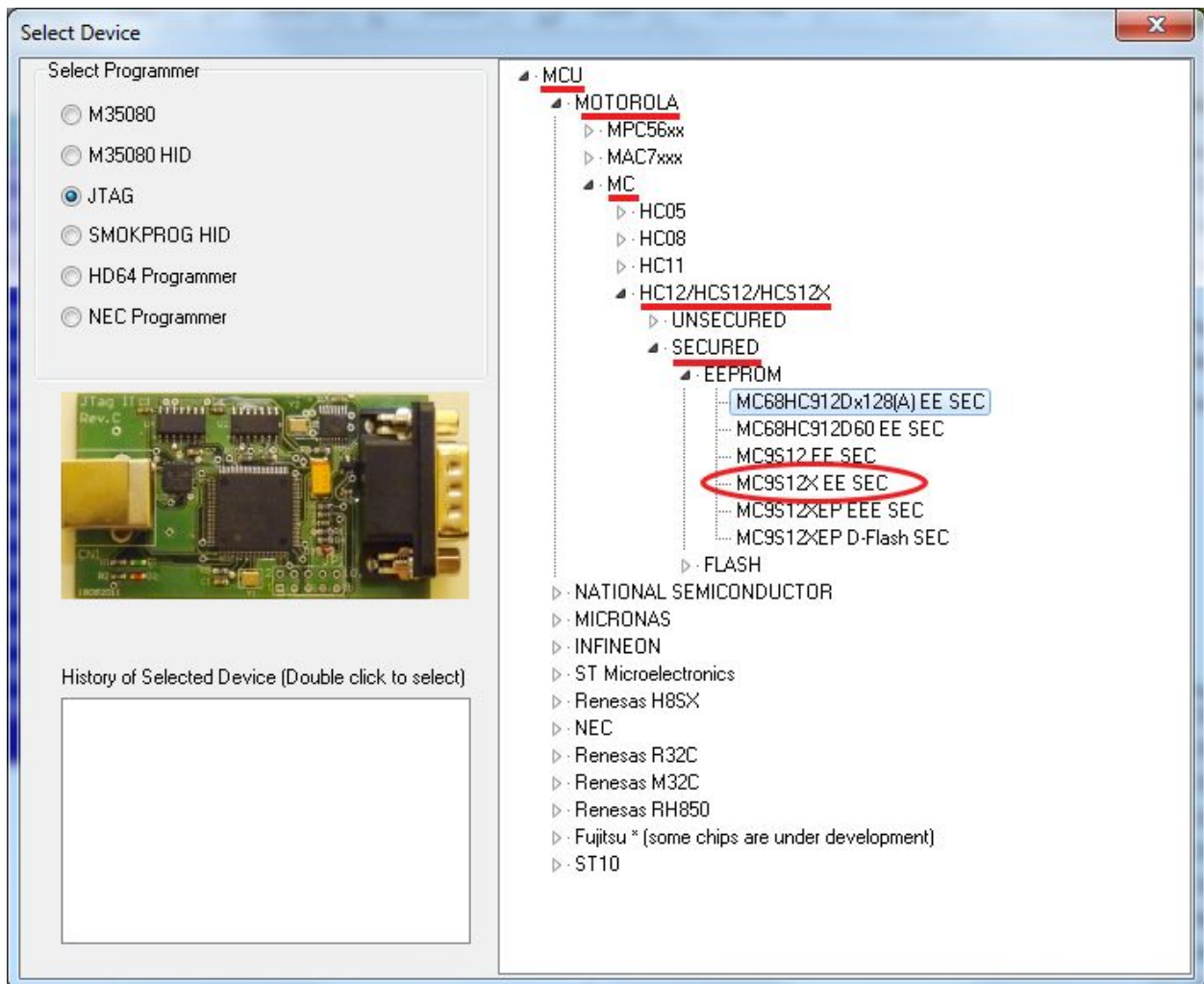
Programmer Information

SWA	1.94
SWB	1015
SWA.B	v212
Upd Status	Ok
Date SW
SN :	5904855
Name	JtagDS
HW Status	Ok
LID	62D98E3300000A9

Jtag II Connected smok.com.pl

CAS3

Make sure that JTAG is selected in programmer software.
Select MOTOROLA > MC > HC12/HCS12/HCS12X > SECURED > EEPROM
Double click on MC9S12X EE SEC option as seen in the red circle.



CAS3

Now click on Read button.

The screenshot shows the MultiProg v1.40.5.6 software interface. The 'Read' button, represented by a green upward-pointing arrow, is circled in red. The main window displays a memory dump for the selected device 'MC9S12 EE SEC'. The memory dump shows addresses from 0x000 to 0x100, with all data bytes being 'FF'. The right-hand panel shows device information and programmer details.

Address	00	01	02	03	04	05	06	07	08	09	0A	0B	0C	0D	0E	0F	01	2	3	4	5	6	7	8	9	A	B	C	D	E	F
0x000	FF	FF	FF	FF	FF	FF	FF	FF	FF	FF	FF	FF	FF	FF	FF	FF	FF	FF	FF	FF	FF	FF	FF	FF	FF	FF	FF	FF	FF	FF	FF
0x010	FF	FF	FF	FF	FF	FF	FF	FF	FF	FF	FF	FF	FF	FF	FF	FF	FF	FF	FF	FF	FF	FF	FF	FF	FF	FF	FF	FF	FF	FF	FF
0x020	FF	FF	FF	FF	FF	FF	FF	FF	FF	FF	FF	FF	FF	FF	FF	FF	FF	FF	FF	FF	FF	FF	FF	FF	FF	FF	FF	FF	FF	FF	FF
0x030	FF	FF	FF	FF	FF	FF	FF	FF	FF	FF	FF	FF	FF	FF	FF	FF	FF	FF	FF	FF	FF	FF	FF	FF	FF	FF	FF	FF	FF	FF	FF
0x040	FF	FF	FF	FF	FF	FF	FF	FF	FF	FF	FF	FF	FF	FF	FF	FF	FF	FF	FF	FF	FF	FF	FF	FF	FF	FF	FF	FF	FF	FF	FF
0x050	FF	FF	FF	FF	FF	FF	FF	FF	FF	FF	FF	FF	FF	FF	FF	FF	FF	FF	FF	FF	FF	FF	FF	FF	FF	FF	FF	FF	FF	FF	FF
0x060	FF	FF	FF	FF	FF	FF	FF	FF	FF	FF	FF	FF	FF	FF	FF	FF	FF	FF	FF	FF	FF	FF	FF	FF	FF	FF	FF	FF	FF	FF	FF
0x070	FF	FF	FF	FF	FF	FF	FF	FF	FF	FF	FF	FF	FF	FF	FF	FF	FF	FF	FF	FF	FF	FF	FF	FF	FF	FF	FF	FF	FF	FF	FF
0x080	FF	FF	FF	FF	FF	FF	FF	FF	FF	FF	FF	FF	FF	FF	FF	FF	FF	FF	FF	FF	FF	FF	FF	FF	FF	FF	FF	FF	FF	FF	FF
0x090	FF	FF	FF	FF	FF	FF	FF	FF	FF	FF	FF	FF	FF	FF	FF	FF	FF	FF	FF	FF	FF	FF	FF	FF	FF	FF	FF	FF	FF	FF	FF
0x0A0	FF	FF	FF	FF	FF	FF	FF	FF	FF	FF	FF	FF	FF	FF	FF	FF	FF	FF	FF	FF	FF	FF	FF	FF	FF	FF	FF	FF	FF	FF	FF
0x0B0	FF	FF	FF	FF	FF	FF	FF	FF	FF	FF	FF	FF	FF	FF	FF	FF	FF	FF	FF	FF	FF	FF	FF	FF	FF	FF	FF	FF	FF	FF	FF
0x0C0	FF	FF	FF	FF	FF	FF	FF	FF	FF	FF	FF	FF	FF	FF	FF	FF	FF	FF	FF	FF	FF	FF	FF	FF	FF	FF	FF	FF	FF	FF	FF
0x0D0	FF	FF	FF	FF	FF	FF	FF	FF	FF	FF	FF	FF	FF	FF	FF	FF	FF	FF	FF	FF	FF	FF	FF	FF	FF	FF	FF	FF	FF	FF	FF
0x0E0	FF	FF	FF	FF	FF	FF	FF	FF	FF	FF	FF	FF	FF	FF	FF	FF	FF	FF	FF	FF	FF	FF	FF	FF	FF	FF	FF	FF	FF	FF	FF
0x0F0	FF	FF	FF	FF	FF	FF	FF	FF	FF	FF	FF	FF	FF	FF	FF	FF	FF	FF	FF	FF	FF	FF	FF	FF	FF	FF	FF	FF	FF	FF	FF
0x100	FF	FF	FF	FF	FF	FF	FF	FF	FF	FF	FF	FF	FF	FF	FF	FF	FF	FF	FF	FF	FF	FF	FF	FF	FF	FF	FF	FF	FF	FF	FF

Programmer Information:

- SWA: 1.94
- SWB: 1015
- SWA.B: v212
- Upd.Status: Ok
- Date SW:
- SN: 5904855
- Name: JtagDS
- HW Status: Ok
- LID: 62D98E33000000A9

CAS3

CAS3 reading process is done.

MultiProg v1.40.6.1

File Edit Device Tools Help Exit

READ Write VERIFY ERASE CHIP TEST PIN Unsecure Security Help User manual

Selected Device: MC9S12XEE SEC

Vcc= 5.0

Address	00	01	02	03	04	05	06	07	08	09	0A	0B	0C	0D	0E	0F	01	02	03	04	05	06	07	08	09	0A	0B	0C	0D	0E	0F
0xBD0	FF	FF	FF	FF	FF	FF	FF	FF	FF	FF	FF	FF	FF	FF	FF	FF
0xBE0	FF	FF	FF	FF	FF	FF	FF	FF	FF	FF	FF	FF	FF	FF	FF	FF
0xBF0	FF	FF	FF	FF	FF	FF	FF	FF	FF	FF	FF	FF	FF	FF	FF	FF
0xC00	FF	FF	FF	FF	11	11	FF	FF	FF	FF	FF	FF	FF	FF	FF	FF
0xC10	FF	FF	FF	FF	FF	FF	FF	FF	FF	FF	FF	FF	FF	FF	FF	FF
0xC20	17	74	02	41	38	1E	1E	32	0F	0E	08	1E	44	00	3B	00	
0xC30	00	00	00	36	90	05	05	14	02	09	2A	28	15	32	03	00	
0xC40	20	00	75	FF	00	55	55	FF	08	02	32	7F	00	00	23	23	
0xC50	05	23	33	19	0F	05	1E	14	00	0A	00	00	00	C5	FF	FF	
0xC60	30	41	71	FF	FF	FF	FF	FF	FF	FF	FF	FF	F8	FF	FF	FF	
0xC70	FF	FF	FF	FD	30	36	31	31	32	30	30	39	93	FF	FF	FF	
0xC80	62	6F	D1	FF	57	4D	57	4D	46	37	43	35	37	41	54	58	
0xC90	34	32	34	39	30	64	FF	FF	00	0A	FF	FF	00	0A	FF	FF	
0xCA0	00	0A	FF	FF	00	00	0A	0A	FF	FF	FF	00	0E	FF	FF	FF	
0xCB0	FF	FF	00	10	10	FF	FF	FF	00	04	FF	FF	FF	FF	00	06	
0xCC0	FF	FF	FF	FF	00	08	FF	FF	FF	FF	00	0A	FF	FF	FF	FF	
0xCD0	00	0C	FF	FF	FF	FF	FF	FF	C8	C8	FF	FF	FF	FF	FF	FF	

Read EE MC9S12XEE SEC
Read ID MCU ok
MCU ID :C410
Memory Config :0000
Unsecuring...
t=160, t1=99, t2=71
Unsecure Ok
Reading EE MC9S12Xxx Secured...
Read OK
Saved backup File : C:\Users\Mateusz\Documents\Temp\Temp1.bin

Read OK

Jtag II Connected

smok.com.pl

Device Info
Device: 9s12X
Size: 4096
MCU ID: C410

Program Adres Range
Start Adres: 000000
End Adres: 000FFF

Programmer Information
SWA: 1.95
SWB: 1015
SWA.B: v212
Upd.Status: Ok
Date SW:
SN: 7205005
Name: JtagDS
HW Status: Ok
LID: 6295901500000006