

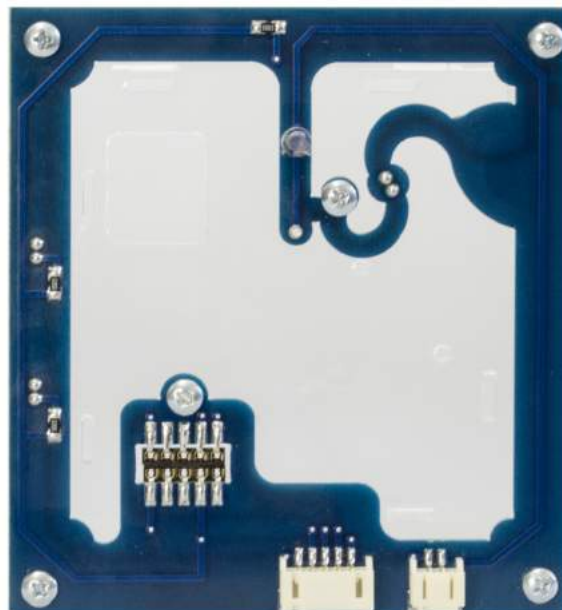
BGA full solution

Package

Set contains IR Tools SE, Magic Eraser SE, Magic Eraser SE Connection cable, EZS adapter



Optional: W204/W207 Click 'n Go



www.mbkeyprog.com

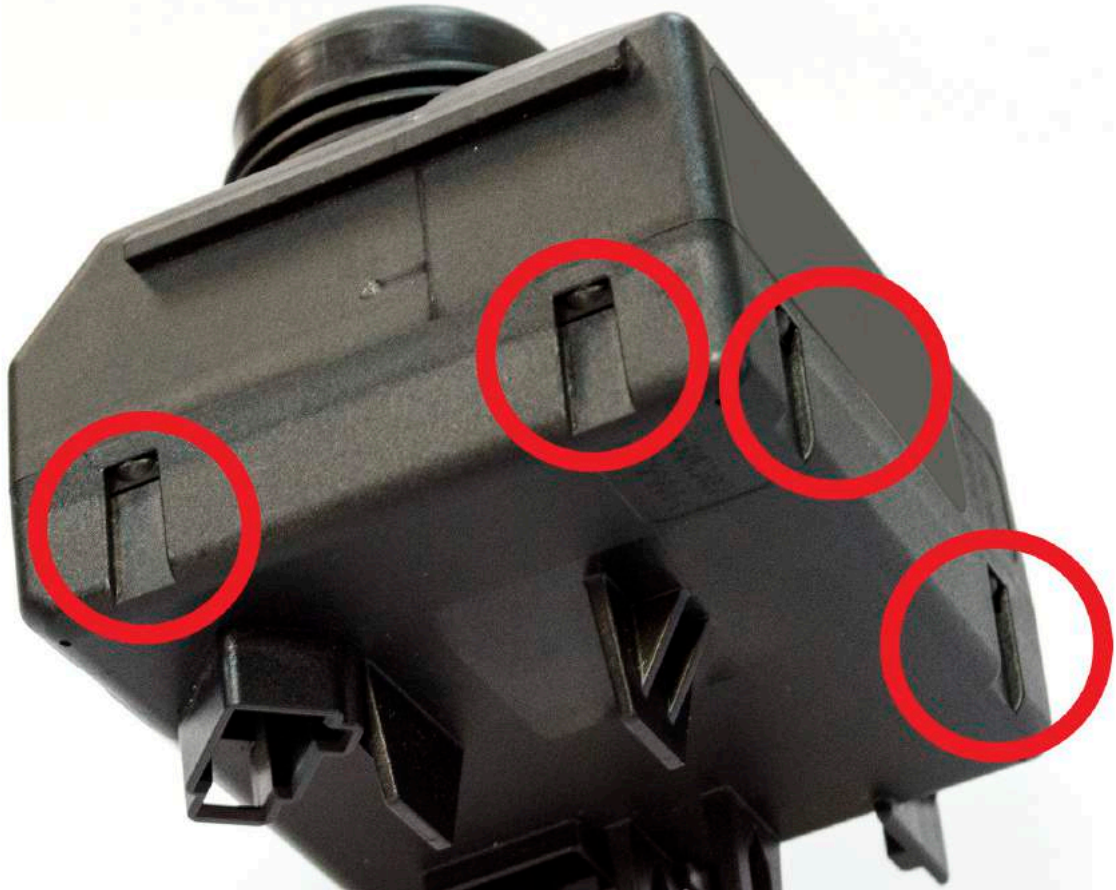


+48 517 443 433
+48 22 724 99 96
info@mbkeyprog.com

BGA full solution

EIS/EZS

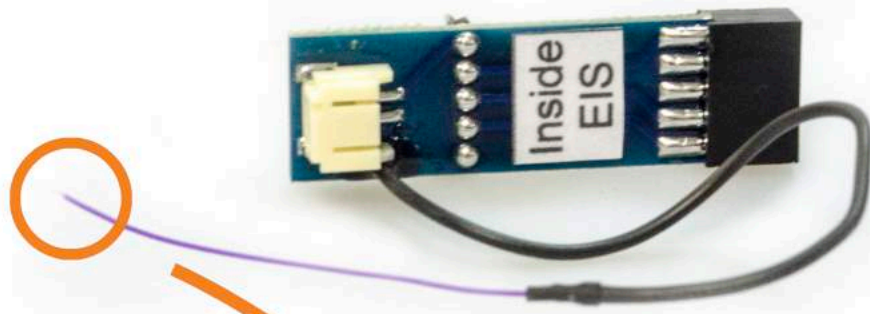
Take off the back side of your EZS. You need to push in the EZS back body holders.



BGA full solution

How to connect

You need to solder this purple cable to the EZS board to the soldering point.



SOLDER HERE



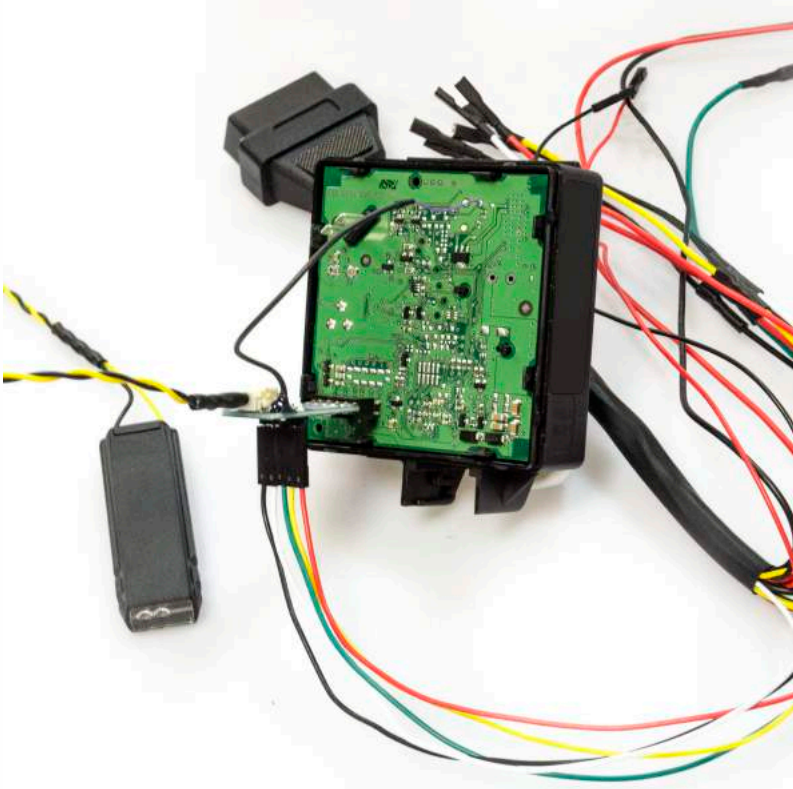
BGA full solution

Plug the adapter to EIS pins with "Inside EIS" sticker to the inside and "Outside EIS" to the outside. Make sure that the purple cable is soldered and stable.

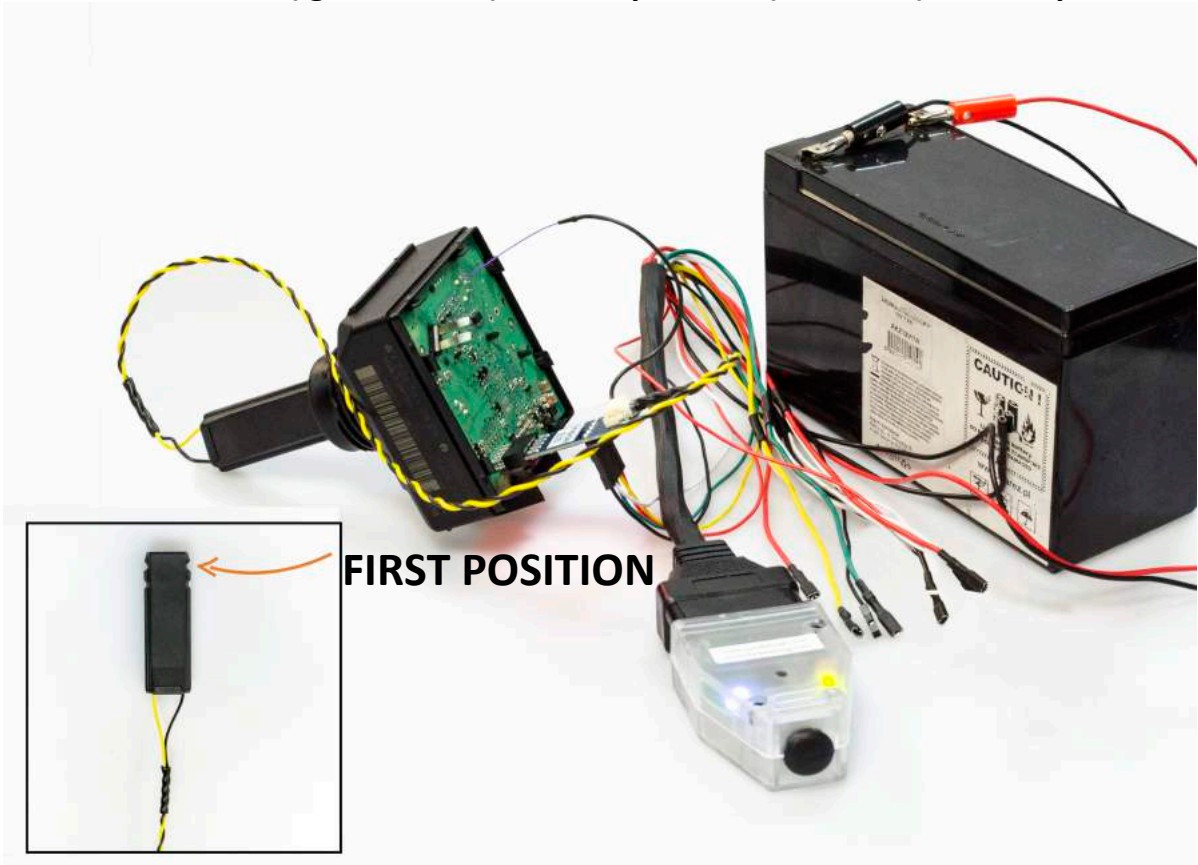


BGA full solution

Connect Magic Eraser SE cables to the adapter PINs. Make sure that the cables are connected in a right way (Instructions are on the outside of adapter).



Connect IR Tools SE to the adapter and connect it to your computer with USB cable.
Connect Magic Eraser SE to the cable set and power it up with 12V battery.
Plug IR Tools SE into EIS (ignition lock), to first position (first click), do not put all way in.

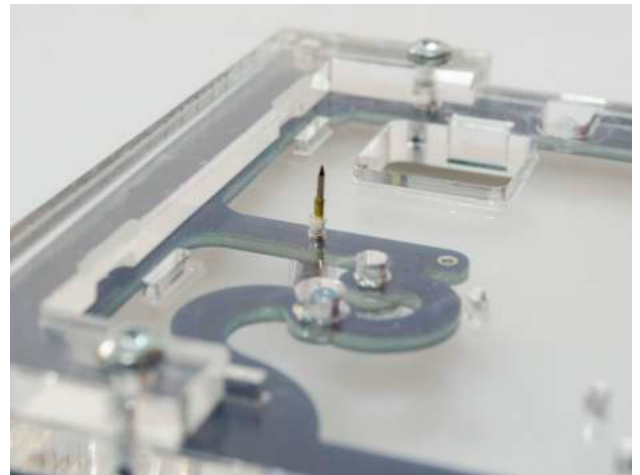


BGA full solution

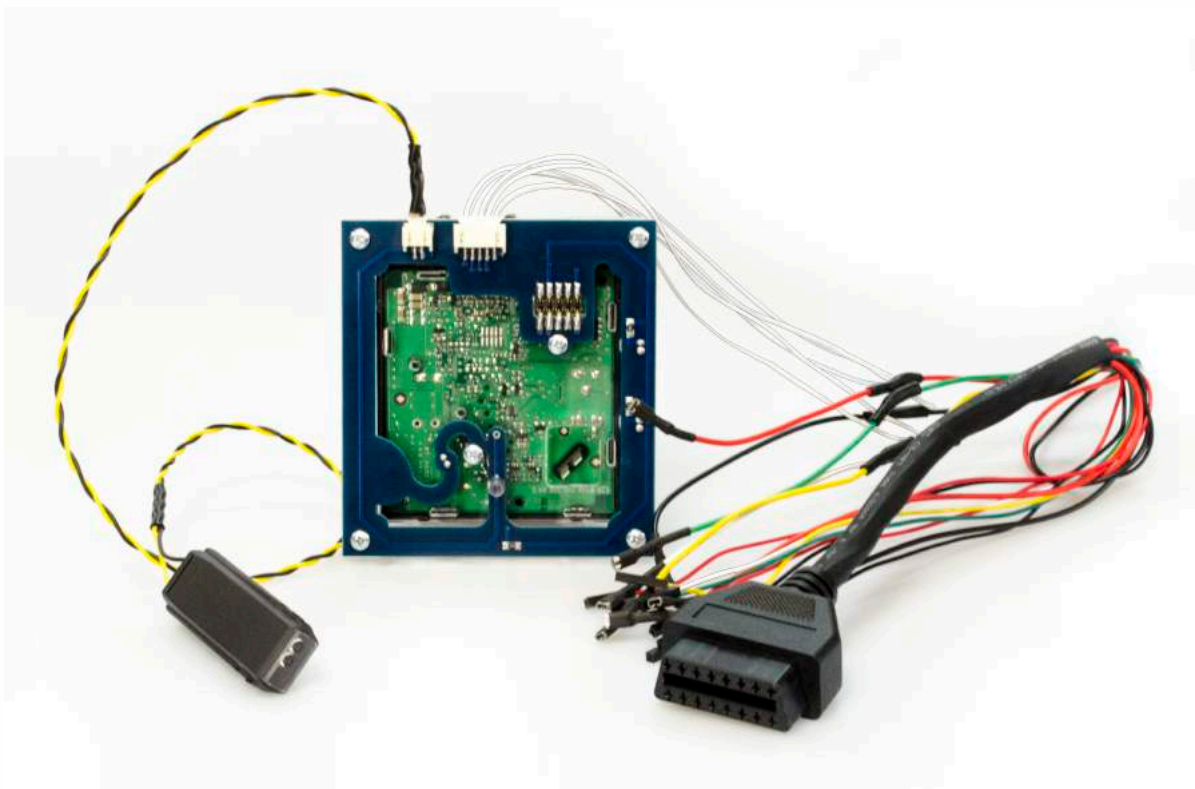
How to connect W204/W207 Click 'n Go

Put the W204/W207 Click 'n Go on the EZS back.
You don't have to solder anything. Be careful with the pins!

Please be careful with this pin,
it's very sharp!

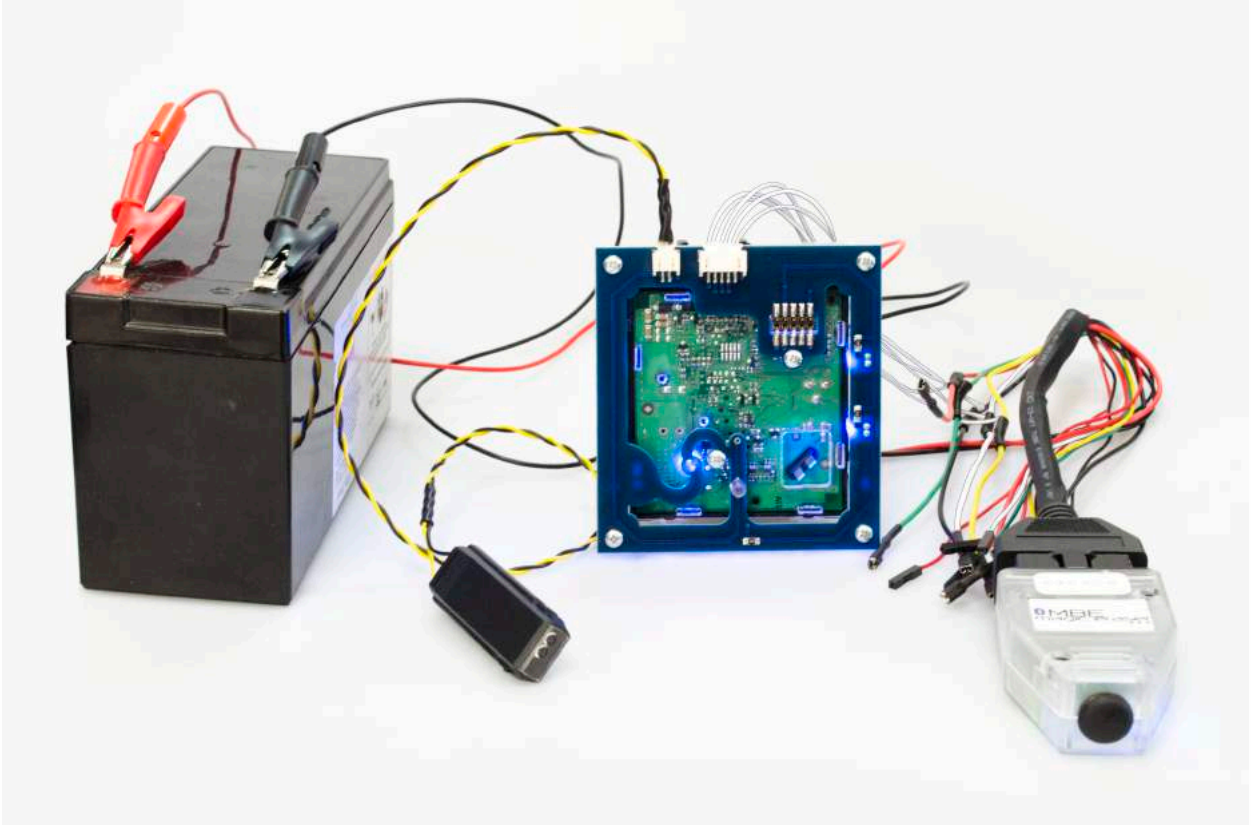


Connect the yellow-black cable connector of IR Tools SE to the W204/W207 Click 'n Go
and the white plug of Magic Eraser SE cable set to the W204/W207 Click 'n Go.



BGA full solution

Connect Magic Eraser to the cable and power it up with 12V battery.



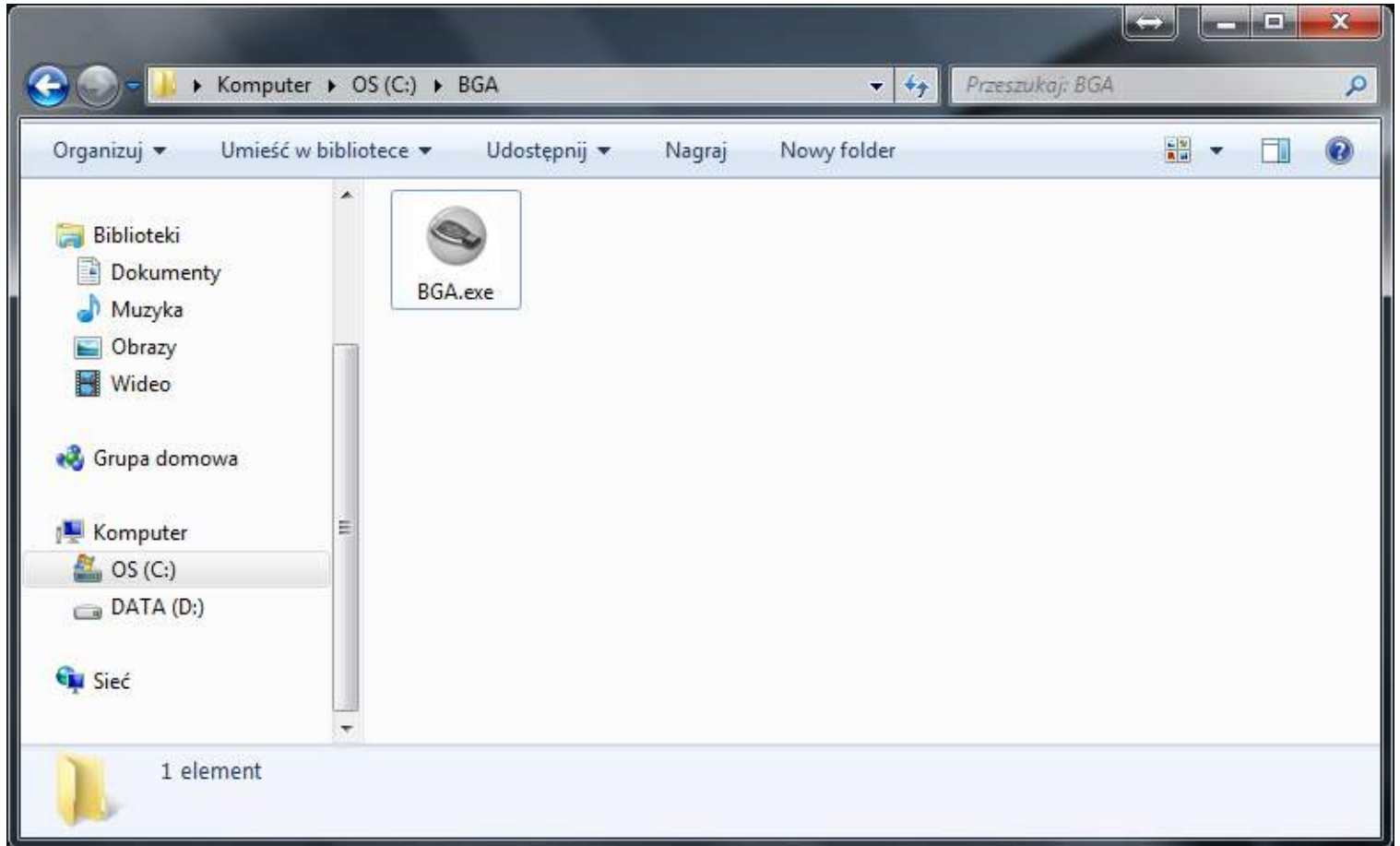
Connect USB cable to the IR Tools SE, Plug IR Tools SE into EIS (ignition lock), to first position (first click), do not put all way in and plug the USB to your computer.

FIRST POSITION



BGA full solution

Run the BGA Tools program. Double click the BGA.exe file.

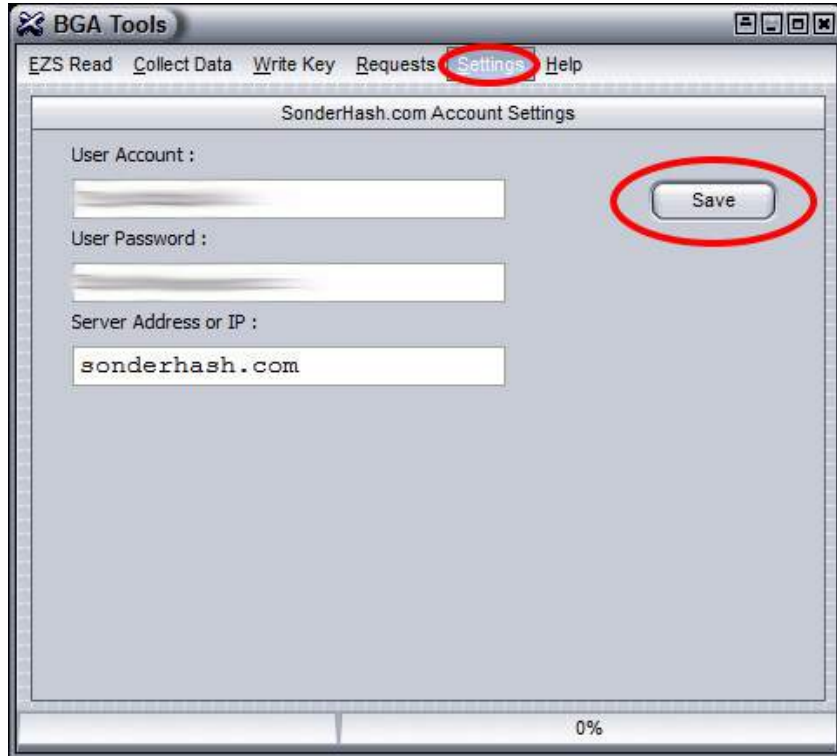


BGA full solution

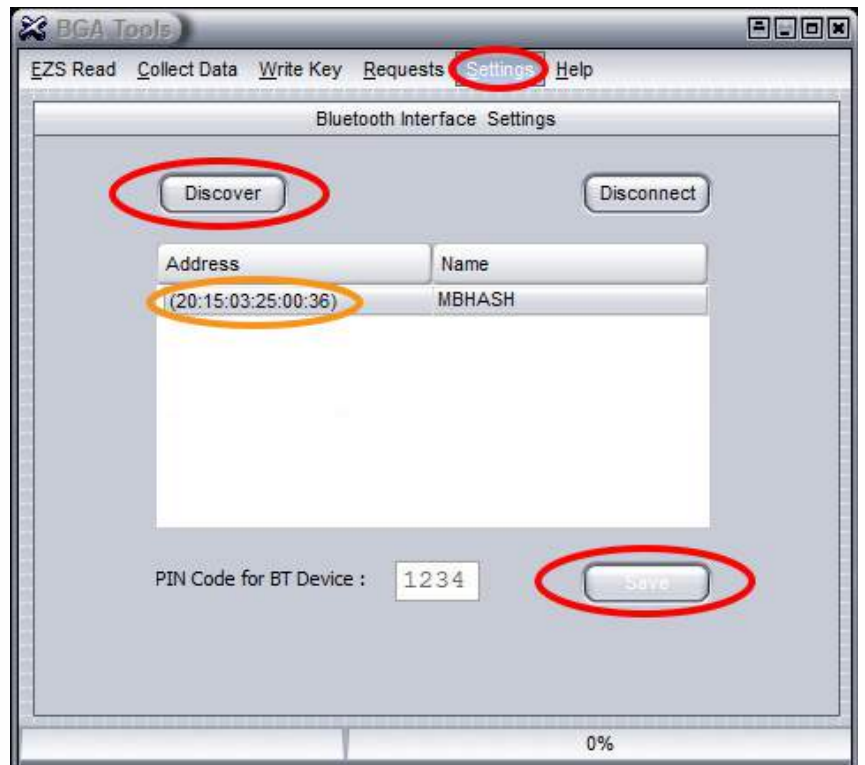
Set up software

Click on the "Settings" tab and select "Account". Login to your sonderhash account by typing in your Sonderhash email and password, click save afterwards.

You're now logged into your sonderhash account.

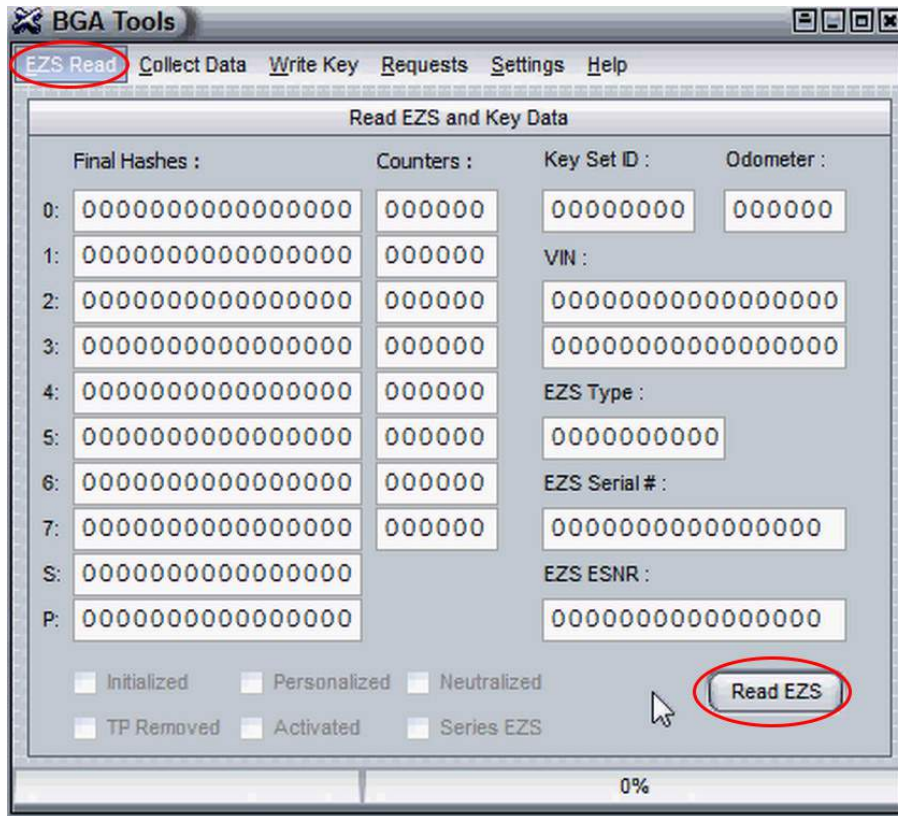


Click on the "Settings" tab and select "Bluetooth". Click "Discover" button to search for devices. Connect to Magic Eraser SE device by selecting "MBHASH" device from the device list, device address is on the sticker on the device (The Addresses need to match!). Type in 1234 PIN Code and click save. Your Magic Eraser SE device is now connected.

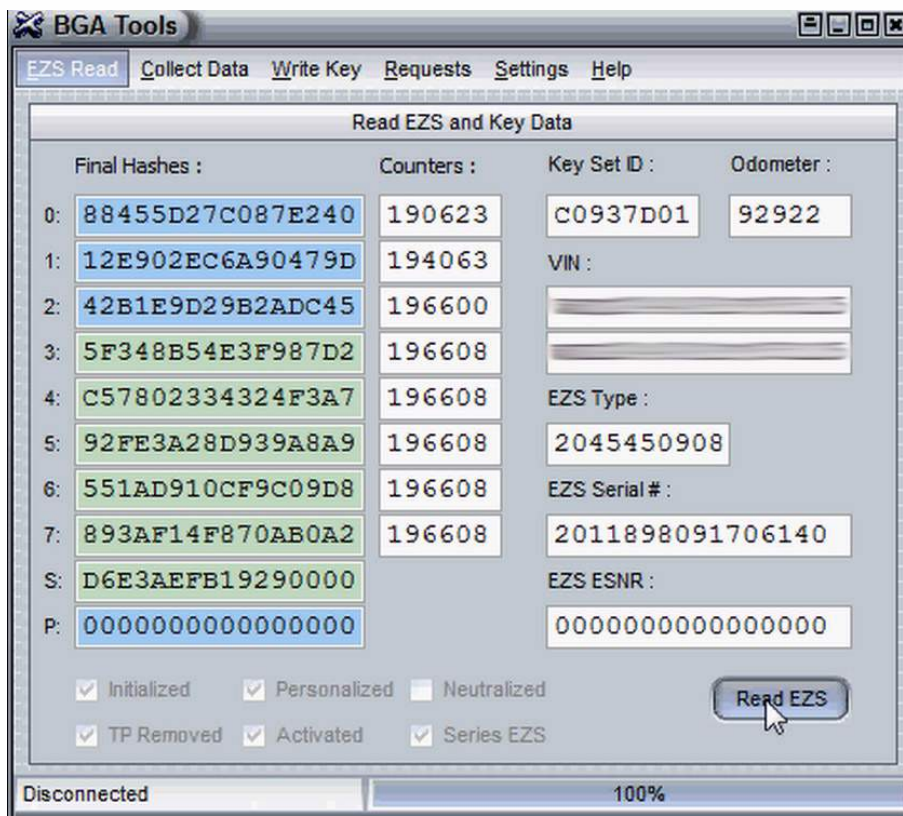


BGA full solution

Make sure that the IR Tools SE is connected to your computer.
Go to the "EZS Read" tab and click "Read EZS" button.



Your EZS hashes are shown after reading EZS.



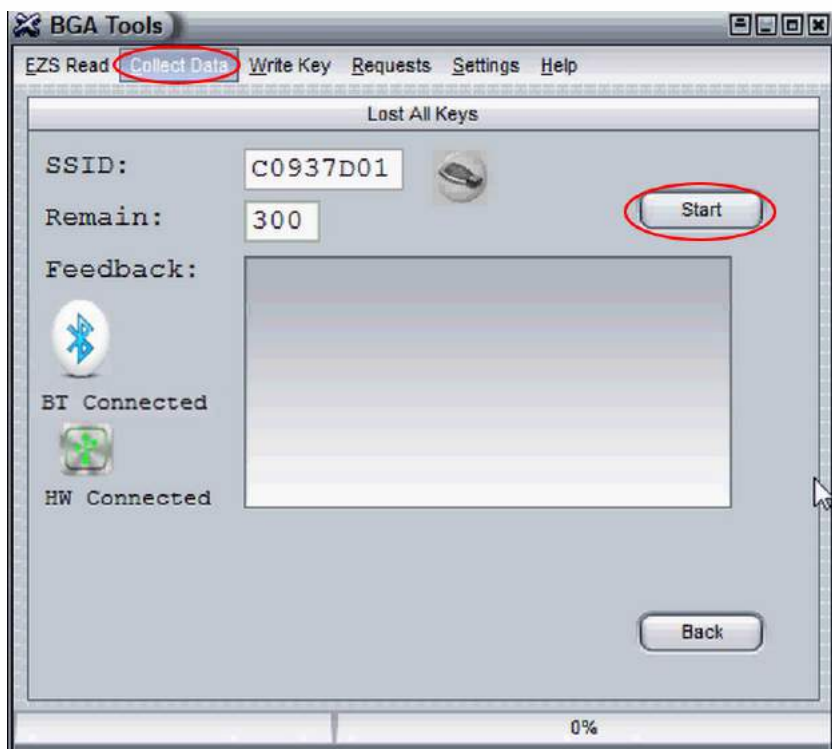
BGA full solution

How to read password - All keys lost

Click on the "Collect Data" tab. If you don't have a working key for the EZS please select "No" button.



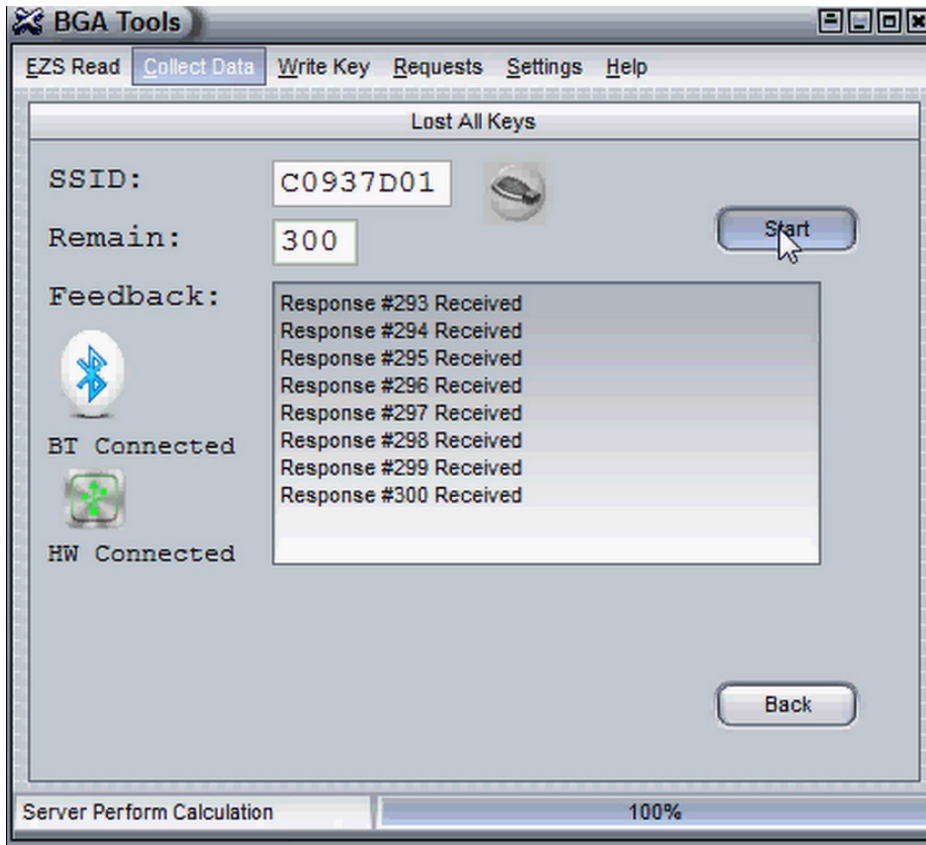
Click "Start" button. Program is collecting data from EZS, please be patient.



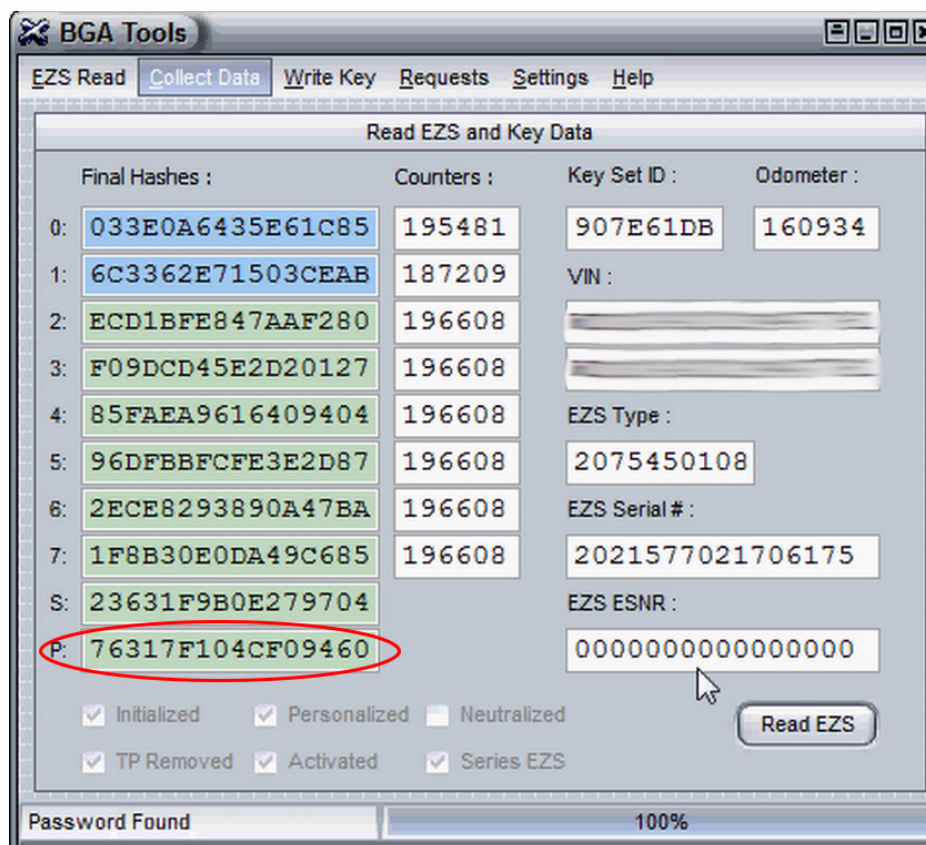
BGA full solution

The process of collecting data is done.
Program is now performing calculation.

If password not found click on "Start" button once again to collect and calculate data.



Password found!



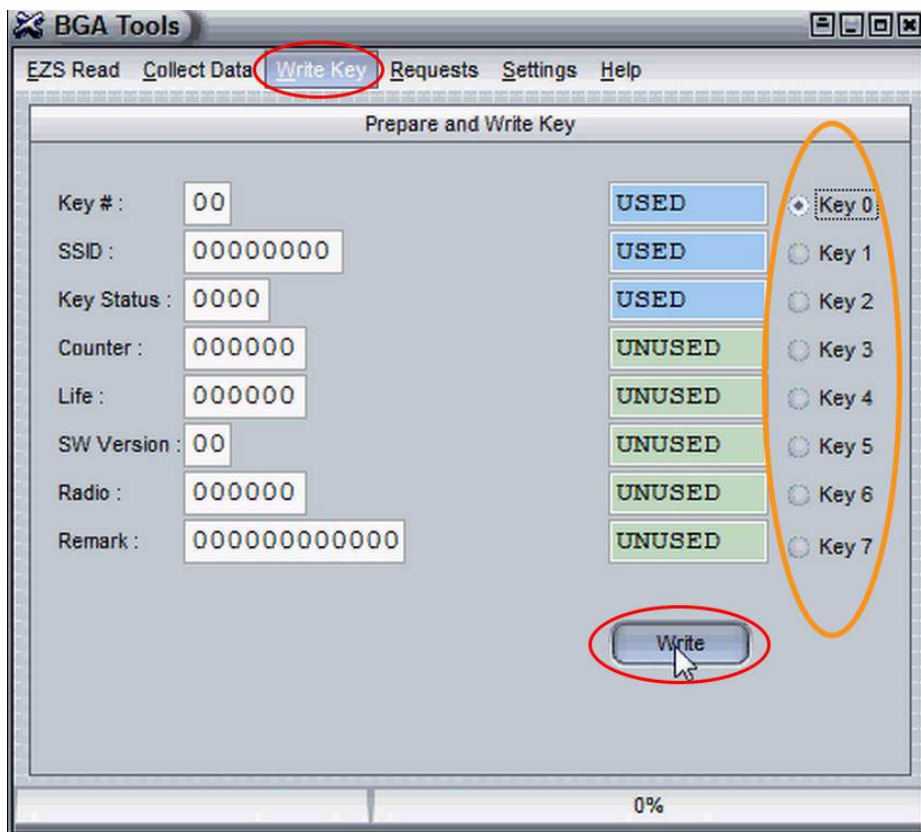
BGA full solution

How to program key - All keys lost

Connect your MB Key Prog 2 to the computer and put the new key with 21DF status into your MB Key Prog 2.



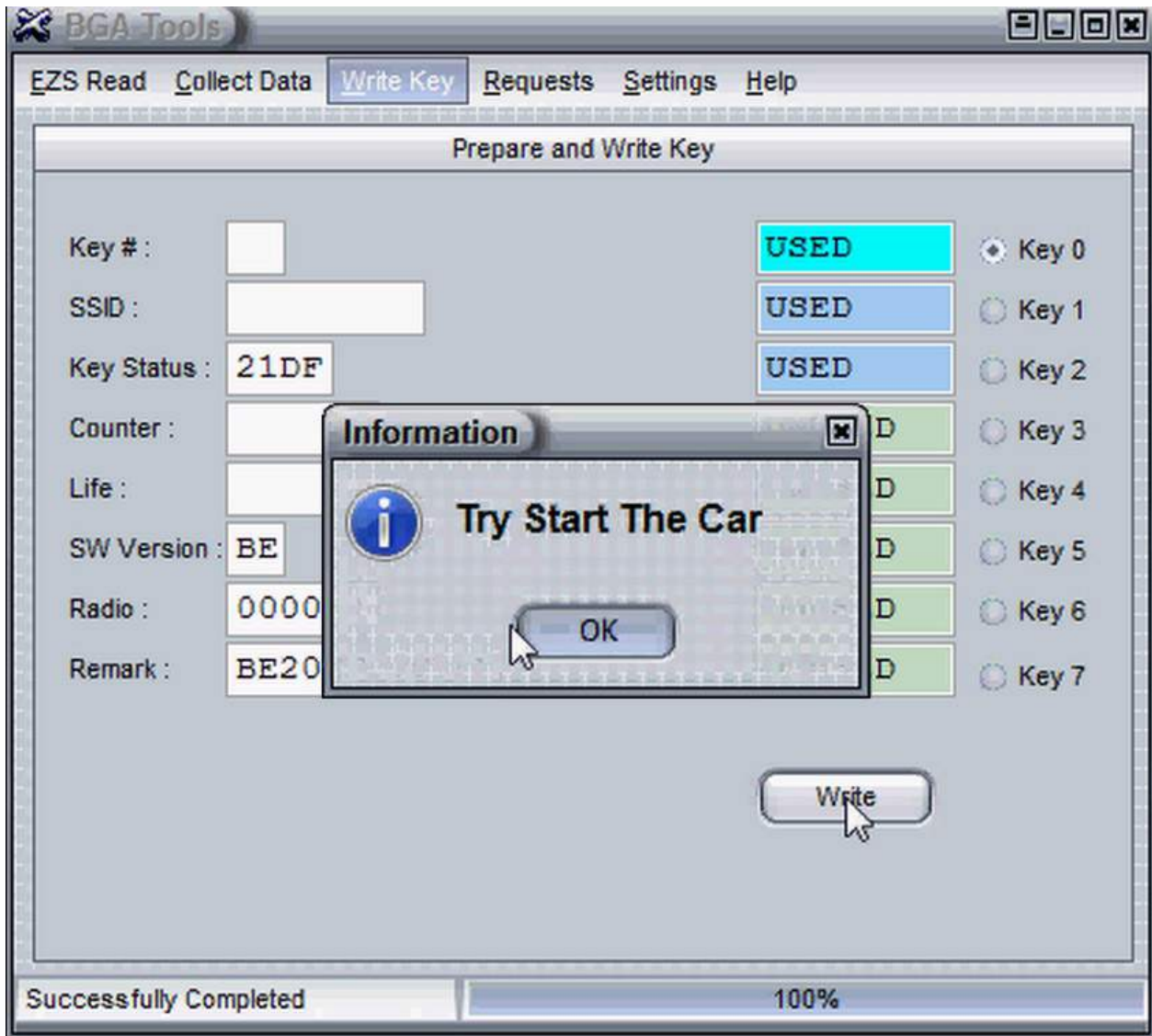
Go to the "Write Key" tab, select Key and click "Write" button.



Select key

BGA full solution

Your key is now programmed!



www.mbkeyprog.com



+48 517 443 433
+48 22 724 99 96
info@mbkeyprog.com