

MadStad Adjustable Windshield Mount Yamaha Super Ténéré (all years)

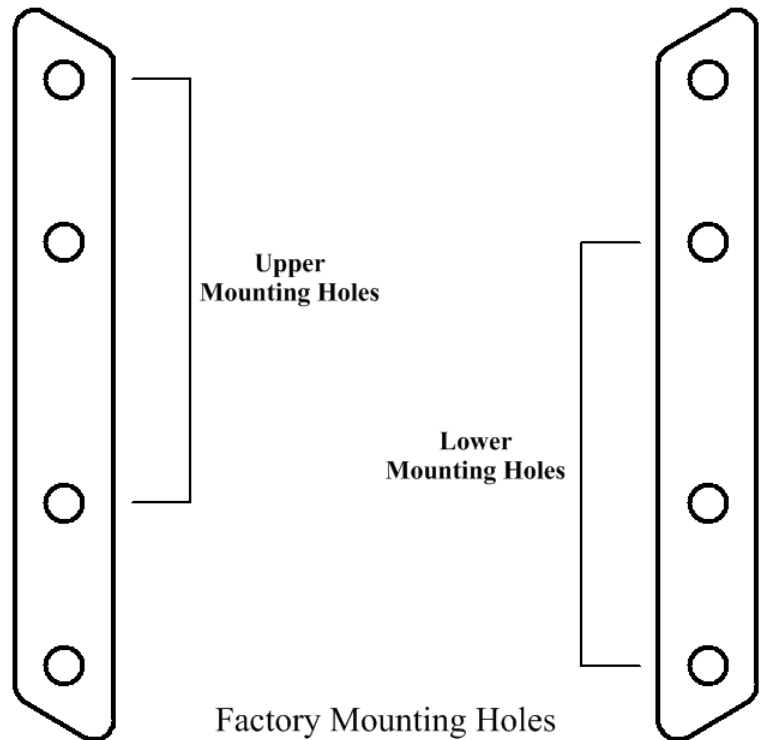
Please read this entire manual before proceeding with installation.

What Is In The Box:

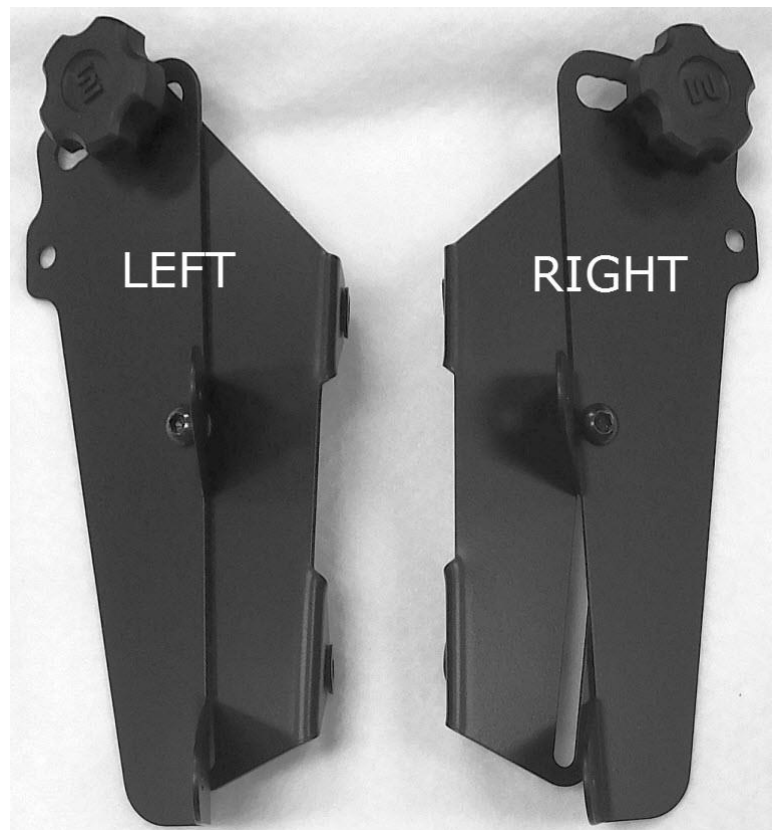
- (1) Set of Adjustable Windshield Brackets
- (1) Aluminum crossbar
- (2) M6 x 16mm screws
- (2) M6 lock washers
- (6) M5 x 25mm Philips screws
- (6) M5 flat washers
- (4) M5 T-screws
- (8) rubber washers
- (2) M5 rubber well nuts
- (2) Side support bars



STEP 1: Remove the four factory windshield screws, plastic covers and the windshield. If you have a newer 2014-up Tenere you also need to remove the metal height-adjustment framework that the windshield was attached to. The only thing left behind should be two slanted plastic upright posts, each with four holes in it as shown at right:



The MadStad brackets will be attached next, and the image at right shows their orientation. Knobs will be up toward the top and facing each other when installed (see photos on next page).

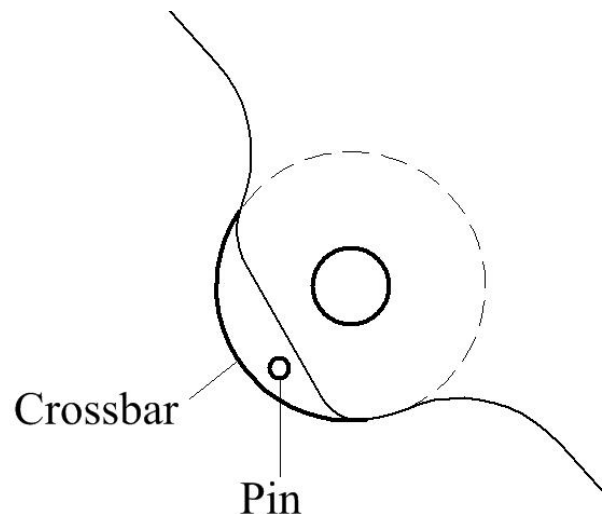


STEP 2: Attach the MadStad brackets to the upper factory mounting holes as shown at right using four of the M5 screws and flat washers provided. Get the screws started and partially snug, but don't fully tighten yet.

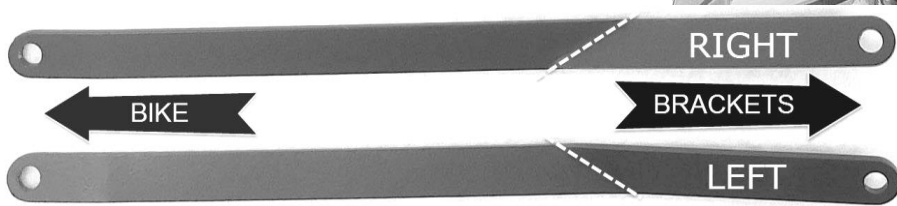
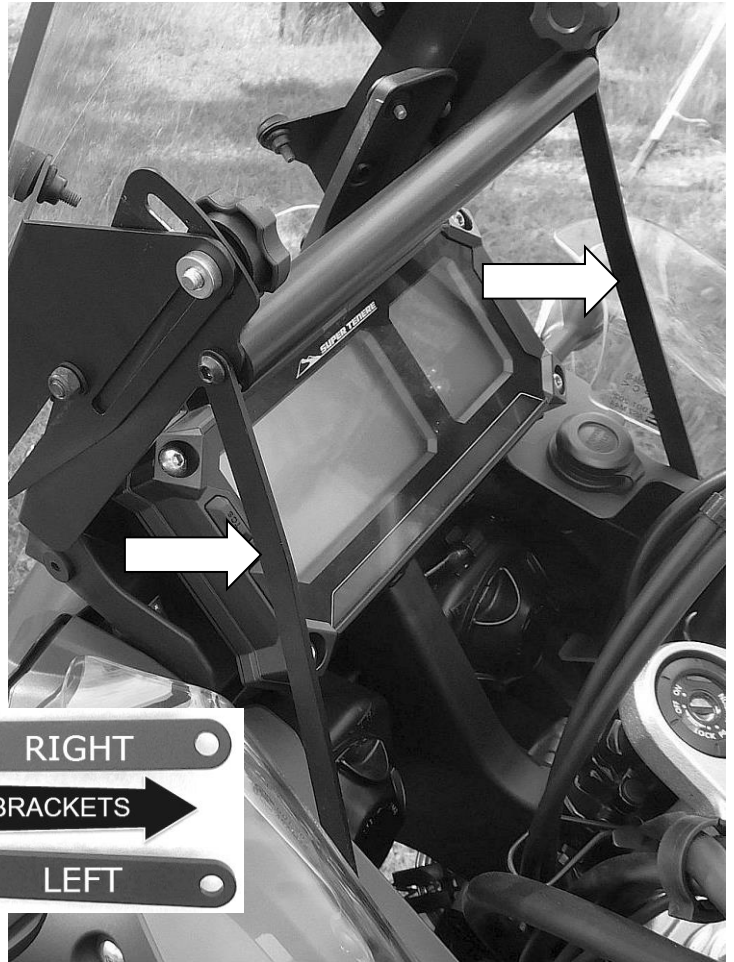
The orientation of the MadStad brackets should be with the adjustment knobs on the inside facing each other (as seen in the photo at right). On the 2013-under series the windshield mounting tabs will also be on the inside pointing up as seen at right. On the 2014-up Tenere those tabs will be pointing outward, but the knobs still face inward.



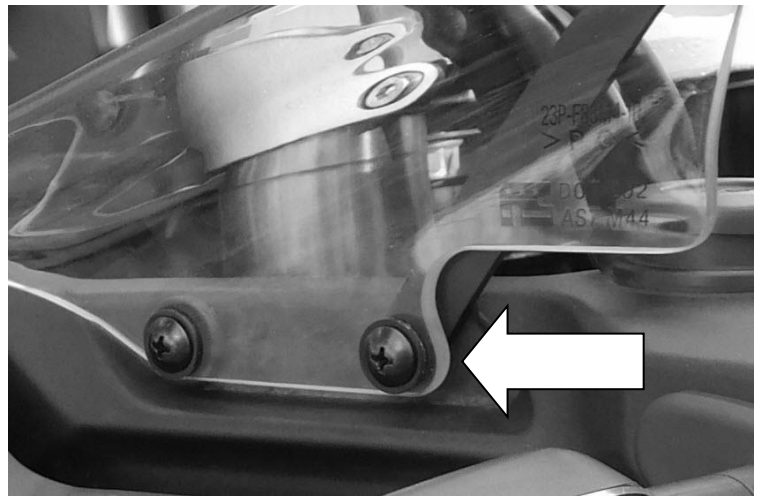
STEP 3: The crossbar you see in these photos gets installed between the two brackets, but there is a pin on one side that must be placed outside of the brackets to keep it from rotating. Please refer to the diagram at right. Before you screw this bar in, go to the next page for the side support step.



STEP 4: The side supports attach to the outsides of the cross bar. They have a slight bend to them and the shorter side attaches to the brackets, long side bending outward slightly as they go down to the side deflector mounting holes. Take the M6 x 16 screws with lock washers, run them through the side supports and into the crossbar on each side. Finger-tighten these but do not secure until you've installed the side supports at the bottom.



There are two holes down at the sides of the forks for mounting the factory side deflectors (see photo at right). If you have those deflectors then our side supports mount between the deflector and the bike. If you do not have them then insert the M5 well nuts provided (one on each side) into the front hole and attach the side supports to them using the remaining M5 screws with flat washers. Go ahead and tighten these snugly making sure the well nuts are fully seated and swell up on the inside of the fairing plastic. NOW you can go back and finish tightening the crossbar screws, and finally the bracket mounting screws in front. **DO NOT OVERTIGHTEN** any of these screws, just make them snug.



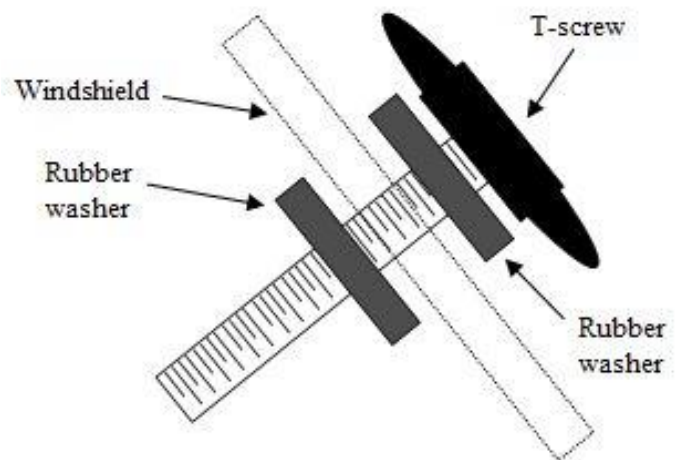
INSTALLING THE WINDSHIELD

1. Loosen the knobs and slide the upper brackets all the way forward and all the way down. This places both brackets in the same position for easy windshield installation. Snug the knobs back up to keep the brackets from moving out of place.
2. **Position the windshield over the brackets**, aligning the windshield holes with the well nuts. Screw in the original windshield screws (with plastic covers, from the stock setup) until each screw begins to protrude through the bottom of the nut and the nut begins to swell up. At this point they are snug enough. **DO NOT OVERTIGHTEN!**

NOTE: Do not press the screws hard into the well nuts when screwing them in. If you accidentally push a well nut out you must insert it back up through the bottom by squeezing the top together and pushing it up through the hole. The well nuts cannot be inserted down through the top of the brackets.

IF YOU PURCHASED A MADSTAD WINDSHIELD

The small plastic factory hole covers which cover the holes in the stock shield won't fit and aren't necessary on a MadStad windshield. Our shields don't have all of the extra holes that the stock shield has. We instead provide quick-remove T-screws with rubber washers that act as cushions at each windshield hole. They attach to the shield as shown in the diagram at right.



Adjusting the MadStad Brackets

The knob screws release the brackets allowing the windshield to slide and tilt. These knob screws must always be tightened securely before riding. **DO NOT** attempt to adjust the brackets while riding! You must come to a complete stop before making adjustments. Also make sure that you do not set the windshield in such a way that causes your handlebars or hand guards (if installed) to hit the windshield when turning, or before reaching full lock.

To make adjustments, loosen the knobs 1-2 turns and set the windshield so the top edge is at about your chin level as you look straight ahead while seated on the bike. Set the angle at approximately 60 degrees. (Use the angle guide on the back page of this manual as a guide.) Tighten the knobs and go for a ride to check the airflow. Do this on a calm day if at all possible; windy days make it hard to judge the airflow. Don't ever try to adjust the mount while in motion!

To try a different windshield position, bring the motorcycle to a complete stop and out of traffic. Loosen the two knob screws and tilt the windshield forward or back 2-3 degrees or so, and/or adjust it up or down if necessary. Re-tighten the knobs and go for another ride.

Continue experimenting with different positions at different speeds until you find a combination of height and rake angle that eliminates buffeting and gives a smoother ride. You may have more than one favorite position, for example shield tilted forward on cooler days, and shield tilted back for hot days to let more air to your body.

The stock shield is only so big and cannot give you a complete pocket of wind protection. You may want to consider two other options: (1) a larger windshield, and (2) Yamaha Side Deflectors. A larger shield will push more air out of your way, and the extra width will help to push the air off of your arms and shoulders. Our brackets can adjust shield height, but not width! Air will still come into your body from underneath the shield along the sides of the headlight pod, and there is nothing any windshield can do about this. We recommend that you purchase a set of Yamaha Side Deflectors which make a very noticeable improvement in comfort.

Disclaimer

Neither MadStad Engineering nor its owners shall be liable for any damages, consequential or inconsequential, resulting from the use of our products. Installation of any of our products constitutes acceptance of these terms.

It is the responsibility of the user to make sure all fasteners are tightened securely, the windshield is mounted properly and the adjustment knobs are tightened snugly before putting the motorcycle in motion. MadStad systems ARE NOT intended to be adjusted while the vehicle is in motion; you must pull over out of the way of traffic and come to a complete stop before making any changes. The user must never place the windshield in such a position as to interfere with the safe and complete movement of the handlebars and controls.

Returns and Warranty

If you are not satisfied with your new windshield system you have 30 days to return it. Full details are available on our web site at www.madstad.com. If purchased from a dealer then please contact the dealer for their return policy.

MadStad adjustable brackets carry a lifetime warranty against manufacturing defects. This does not include cosmetic issues nor any parts that inherently wear out or degrade over time such as rubber and plastic parts. Windshields, deflectors and other similar plastic parts are warrantied for 1 year against manufacturing or materials defects, not against cosmetic issues or issues related to normal wear and tear.

MadStad Engineering, Inc.

1451 E. Jefferson St.
Brooksville, FL 34601 U.S.A.
Phone: 352-848-3646

Web Site: <http://www.madstad.com>

Email: support@madstad.com

Thank you for your support, and ride safely!

