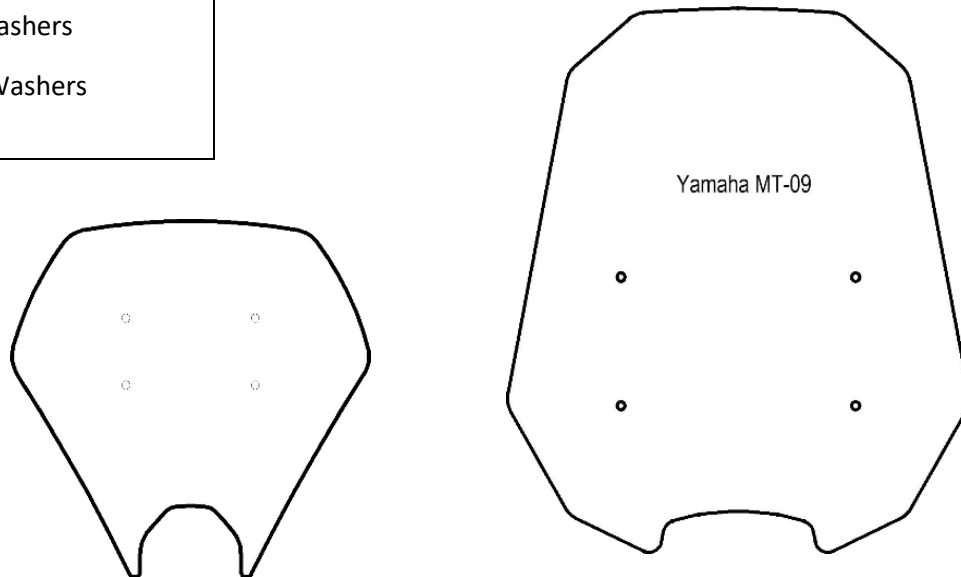


MADSTAD

Yamaha MT-09 (2021-Up)

** Please read this entire manual before proceeding with the installation **

- (1) Fly Screen
- (2) Base Brackets (set)
- (2) Side Braces (set)
- (4) M6 x 20 Button Socket Screws
- (4) M6 Metal Flat Washers
- (2) M8 x 50 Socket Head Cap Screws
- (4) M8 Flat Washers
- (4) Alum. Spacers 0.5 x .315 x 0.5
- (1) Mt-09 Cross Bar
- (2) M6 x 16 Screws
- (2) M6 split Lock Washers
- (2) M6 Flat Washers
- (8) M5 x 20 Truss Screws
- (8) M5 Plastic Flat Washers
- (8) M5 Soft Rubber Washers



We would love to have your feedback on this Installation Manual. Please email us at Support@madstad.com

1. Installing Base Brackets and Supports

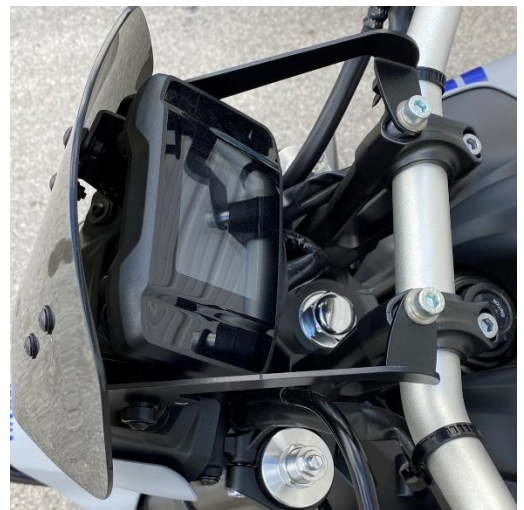
This windshield system is unique for MadStad because it has two shields – a fly screen and touring shield. The Base brackets are for the Fly screen and we start the process by removing the (4) screws around the headlight housing.



- A. Use the M6 x 20 screws from the kit.
Be sure the Quik-Release spools are facing outward
Repeat the process for the other side of the bike.



- B. The long Support Brace gets attached to the handlebar clamp using (2) M8 X 50 Screw, Aluminum Spacer, and M8 Flat Washer
NOTE: Be sure to loosen only one handlebar clamp bolt at a time.



2. Quick Release Brackets and Crossbar Installation

Our Quick Release Brackets feature a Push Pin Locking mechanism that lock the QR Brackets to the Mounting Brackets.

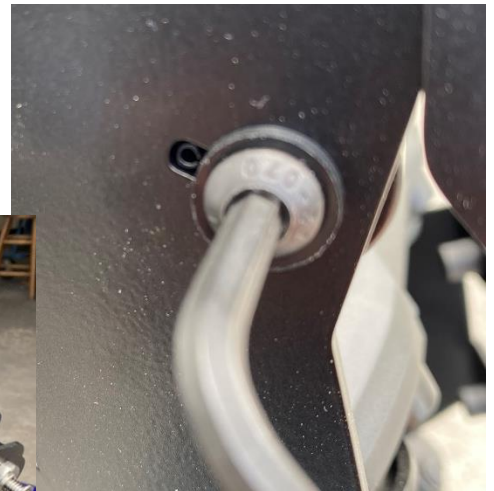
- A. Pulling the Push Pin dial counter clockwise will lock the pin into a retracted position. Turning the dial clockwise will release the pin.



- B. Slide the Bracket slots onto the black spools, making sure that the adjustment knobs are facing inward while the Retaining Pins are facing outward. ALSO – be sure the Retaining Pin is locked and secure before riding the motorcycle.

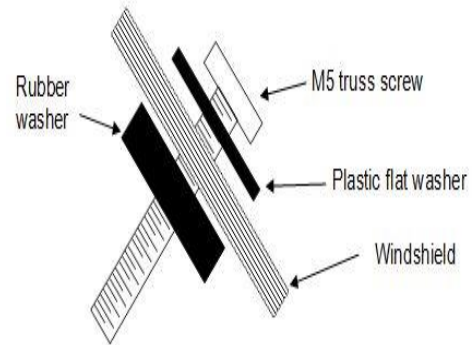


- C. The Crossbar has a small tip on one end. There is also a couple of slots cut into the bracket. Take a look at the picture below. Place one end of the crossbar, making sure the tip from the crossbar is in the slot. Using a M6 x 16 screw and M6 Lock Washer, attach the crossbar to the bracket. Repeat on the other side of the bike.

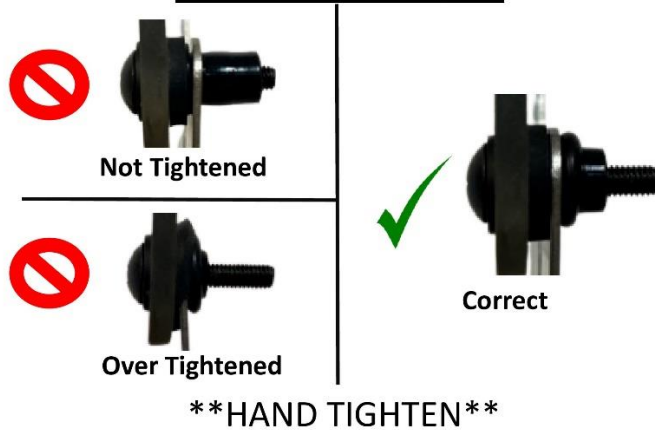


3. Windshield Installation

- A. Pre-install the Truss screws & washers into the windshield holes as shown in the image at right.
- B. Once all four of the screws are in place, gently guide the screws into the Well Nuts in the brackets until all four are set.
- C. Hand tighten the Truss screws until they swell up behind the bracket and are firmly holding the windshield. Be sure not to overtighten.



Well Nut Tips:



Pivot Screws

The MadStad mount has a pivot screw on each set of brackets, located near the middle of brackets. A nylon lock nut keeps the screw in place, yet allows the brackets to slide back and forth. It is adjusted at the factory to have a minimum of play yet still allow the brackets to move.

The upper pivot hole gives maximum rearward tilt, and the lower pivot hole moves the tilt range 5 degrees more forward. If for some reason you wish to adjust the tightness of this pivot screw or move it to an alternate pivot position, use a 4mm Allen wrench along with a 10mm socket or open-end wrench to make the adjustment. If you tighten the lock nut completely you will not be able to slide the brackets.

Adjustment Knobs

To adjust the windshield for height and/or angle you must loosen the knobs about 1-2 turns to loosen the brackets allowing them to slide back and forth. Gently push or pull on the shield to position it where you want it. Once you have the brackets adjusted, you do not need to tighten the knobs down hard, just snug enough to prevent them from moving out of adjustment.

Adjustments

You will have at least 2" of vertical travel and 20 degrees of angle to work with. We suggest setting the angle first, usually about the same angle as the forks on the bike. Loosening the knobs allows for adjustments. Take the bike out and test. You may want to change the angle a little or change the height – this is very much a trial and error type of experiment. **Be sure to stop and pull over when making adjustments.** Different weather conditions and different speeds will help in determining what works best for you.

Disclaimer

Neither MadStad Engineering nor its owners shall be liable for any damages, consequential or inconsequential, resulting from the use of our products. Installation of any of our products constitutes acceptance of these terms. It is the responsibility of the user to make sure all fasteners are tightened securely; the windshield is mounted properly and the adjustment knobs are tightened snugly before putting the motorcycle in motion. MadStad systems ARE NOT intended to be adjusted while the vehicle is in motion; you must pull over out of the way of traffic and come to a complete stop before making any changes. The user must never place the windshield in such a position as to interfere with the safe and complete movement of the handlebars and controls.

Returns and Warranty

MadStad adjustable brackets carry a lifetime warranty against manufacturing defects. This does not include cosmetic issues nor any parts that inherently wear out or degrade over time such as rubber and plastic parts. Windshields, deflectors, and other similar plastic parts are warranted for 1 year against manufacturing defects, not against cosmetic issues or issues related to normal wear and tear. Please visit our website for further details.

MadStad Engineering, Inc.

1451 E. Jefferson St.

Brooksville, FL 34601

352-848-3646

Web Site: <http://www.madstad.com>

Email: support@madstad.com

Thank you for your support, and ride safely!