

## Quick-Release Adjustable Windshield

### Yamaha FZ-10

*Please read this entire manual before proceeding with installation.*

#### What is in the box:

- (1) MadStad FZ-10 brackets set
- (1) Crossbar (173 mm long)
- (2) M6 x 12 button socket screws
- (2) M6 metal flat washers
- (2) Mounting plate assemblies
- (2) M6 rubber well nuts
- (2) M6 x 16 button socket screws
- (2) 1/4" plastic flat washers
  
- (4) M5 Truss screws
- (4) M5 plastic flat washers
- (4) soft rubber washers



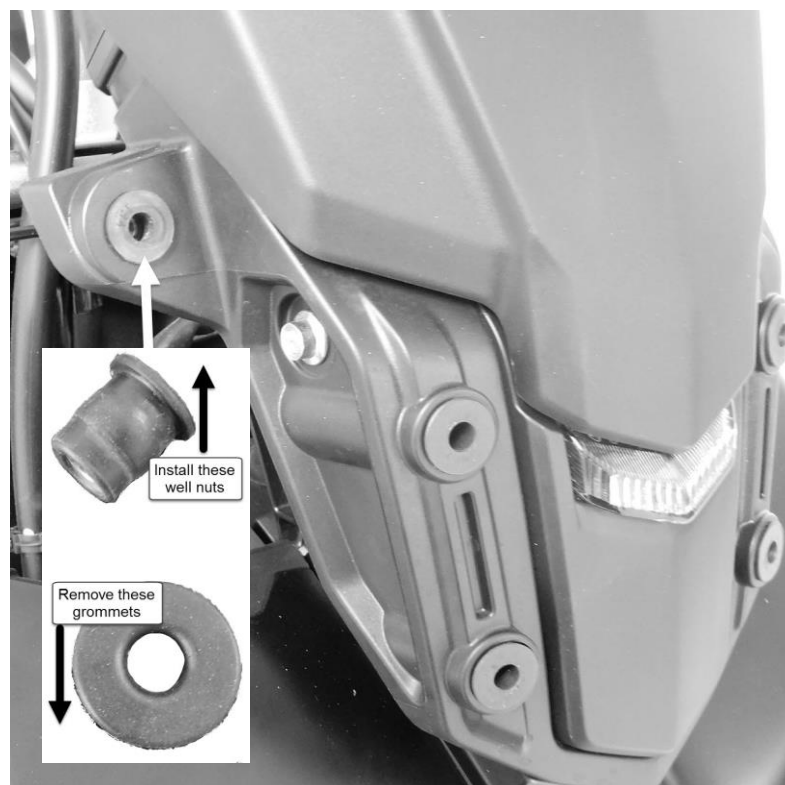
## STEP 1: Remove front factory plastic panels

Remove the four screws in front holding on two Yamaha fairing panels as shown at right. You will not need either of these panels, but save the screws because they will be used to install the MadStad mounting plates.



## STEP 2: Replace the factory side grommets

On the left and right side there is a rubber grommet installed in the fairing as shown by the white arrow at right. This grommet must be removed and replaced with the rubber well nuts provided (one on each side). The MadStad well nuts simply push in from the front, and they will swell up and fit snugly once screws are inserted later on.



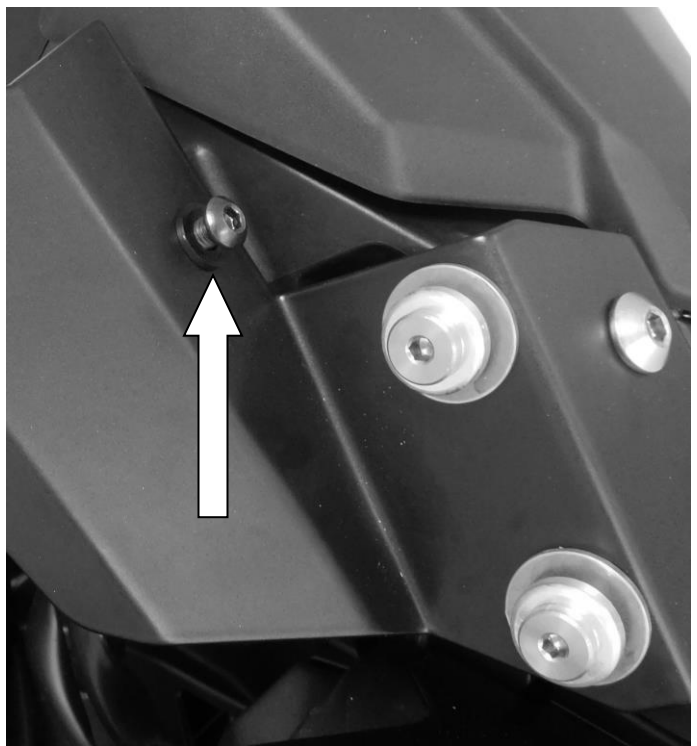
### **STEP 3: Attach the MadStad mounting plates**

Using the four front factory screws you removed in Step 1, attach the MadStad mounting plates to the front of the bike as shown at right.



### **STEP 4: Attach side screws**

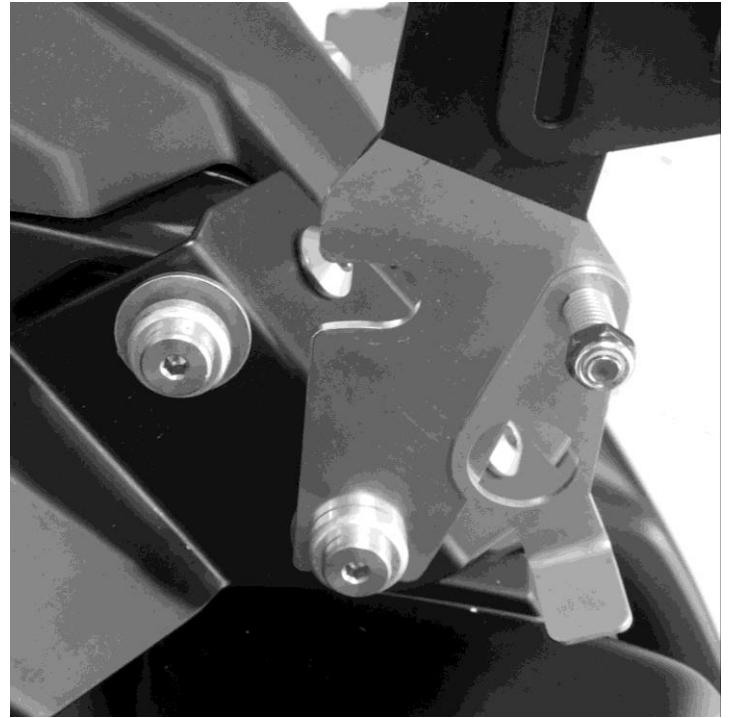
On each side where you inserted a rubber well nut, you can now fasten down the mounting plates with the M6 x 16 button socket screw and plastic washer provided. See photo at right. Keep the plate pressed gently down to make sure the rubber well nut stays seated. Repeat on the other side.



## STEP 5: Attach the MadStad brackets.

Each MadStad bracket slides onto the silver spools sticking out sideways from the MadStad mounting plates. These photos show the right side of the bike, with the front of the bike to the right. The sequence is as follows:

1. Slide the bottom slot of the MadStad bracket onto the lower side spool (see photo at right).



2. Rotate the bracket toward the back of the bike so that the curved slot slides onto the upper spool (see photo at left). Make sure it seats all the way back.



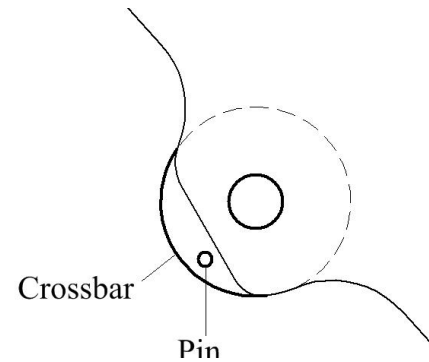
3. Lift and rotate the locking key by its bent tab over and onto the upper spool as seen below. Make sure it presses down and snaps in place.



Repeat the process for the left side and lock that bracket into place as well with the locking key.

## STEP 6: Crossbar Installation

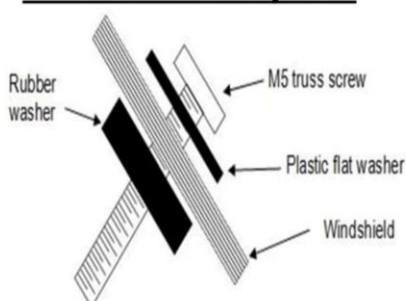
The crossbar gets installed between the two brackets at the slightly extended holes up by the adjustment knobs. There is a pin on one side of the crossbar that must be placed outside of the brackets to keep it from rotating. Please refer to the diagram at bottom right. With the crossbar between the brackets and pin located as shown, use the short M6 x 12 screws with flat washers to fasten from the outside of the brackets.



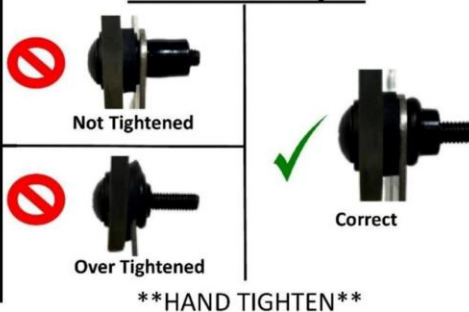
## Windshield Installation

1. Pre-install the Truss screws & washers into the windshield holes as shown in the image below.
2. Once all four of the screws are in place, gently guide the screws into the Well Nuts in the brackets until all four are set.
3. Hand tighten the Truss screws until they swell up behind the bracket and are firmly holding the windshield.

### Windshield Layout:



### Well Nut Tips:



## **Adjusting the MadStad Brackets**

The knob screws release the brackets allowing the windshield to slide and tilt. These knob screws must always be tightened securely before riding. **DO NOT** attempt to adjust the brackets while riding! You must come to a complete stop before making adjustments. Also make sure that you do not set the windshield in such a way that causes your handlebars or hand guards (if installed) to hit the windshield when turning, or before reaching full lock.

To make adjustments, loosen the knobs 1-2 turns and set the windshield so the top edge is at about your chin level as you look straight ahead while seated on the bike. Set the angle at approximately 60 degrees. (Use the angle guide on the back page of this manual as a guide.) Tighten the knobs and go for a ride to see if you now have smooth airflow over and around your helmet. Do this on a calm day if at all possible; windy days make it hard to judge the airflow. Don't ever try to adjust the mount while in motion!

To try a different windshield position, bring the motorcycle to a complete stop and out of traffic. Loosen the two knob screws and tilt the windshield forward or back 2-3 degrees or so, and/or adjust it up or down if necessary. Re-tighten the knobs and go for another ride. Continue experimenting with different positions at different speeds until you find a combination of height and rake angle that eliminates buffeting and gives a smoother ride.

## **Releasing the MadStad System**

The brackets and windshield can be removed as one unit from the mounting base. Simply lift and rotate the locking keys down off of the top mounting spools, then tilt the shield/brackets assembly forward and lift off of the bike. Use the crossbar as a grip if you don't have anything attached there. Re-attach by doing the reverse.

## **Disclaimer**

Neither MadStad Engineering nor its owners shall be liable for any damages, consequential or inconsequential, resulting from the use of our products. Installation of any of our products constitutes acceptance of these terms. Use of our products at excessive speeds is not recommended. Always maintain a safe and legal speed when driving.

It is the responsibility of the user to make sure all fasteners are tightened securely, the windshield is mounted properly and the adjustment knobs are tightened snugly before putting the motorcycle in motion. MadStad systems ARE NOT intended to be adjusted while the vehicle is in motion; you must pull over out of the way of traffic and come to a complete stop before making any changes. The user must never place the windshield in such a position as to interfere with the safe and complete movement of the handlebars and controls.

## **Returns and Warranty**

MadStad adjustable brackets carry a lifetime warranty against manufacturing defects. This does not include cosmetic issues nor any parts that inherently wear out or degrade over time such as rubber and plastic parts. Windshields, deflectors, and other similar plastic parts are warranted for 1 year against manufacturing defects, not against cosmetic issues or issues related to normal wear and tear. Please visit our website for further details.



# MadStad Engineering, Inc.

1451 E. Jefferson St.  
Brooksville, FL 34601 U.S.A.

Phone: 352-848-3646

Fax: 352-240-3911

Web Site: <http://www.madstad.com>

Email: [support@madstad.com](mailto:support@madstad.com)

*Thank you for your support, and ride safely!*

