

## Quick-Release Adjustable Windshield

Yamaha FZ-09 / MT-09 2017

*Please read this entire manual before proceeding with installation.*

### What is in the box:

(1) Quick-release base plate (w/3 mounting BLACK spools)



(3) Base mounting brackets (left, right, top)

(2) M6 x 16 button socket screws

(2) M6 metal flat washers

(2) M6 nylock nuts

(3) M6 x 25 button screws



(2) Adjustable bracket assemblies

(1) Quick-release latch plate assembly

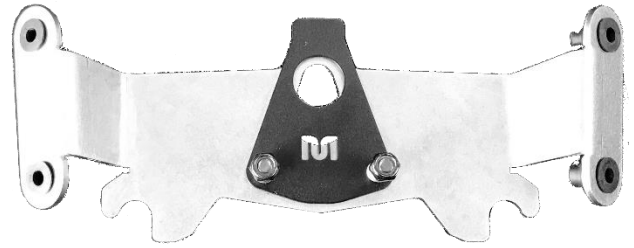
(4) M6 x 12 button socket screws

(4) M6 metal flat washers

(4) M6 nylock nuts



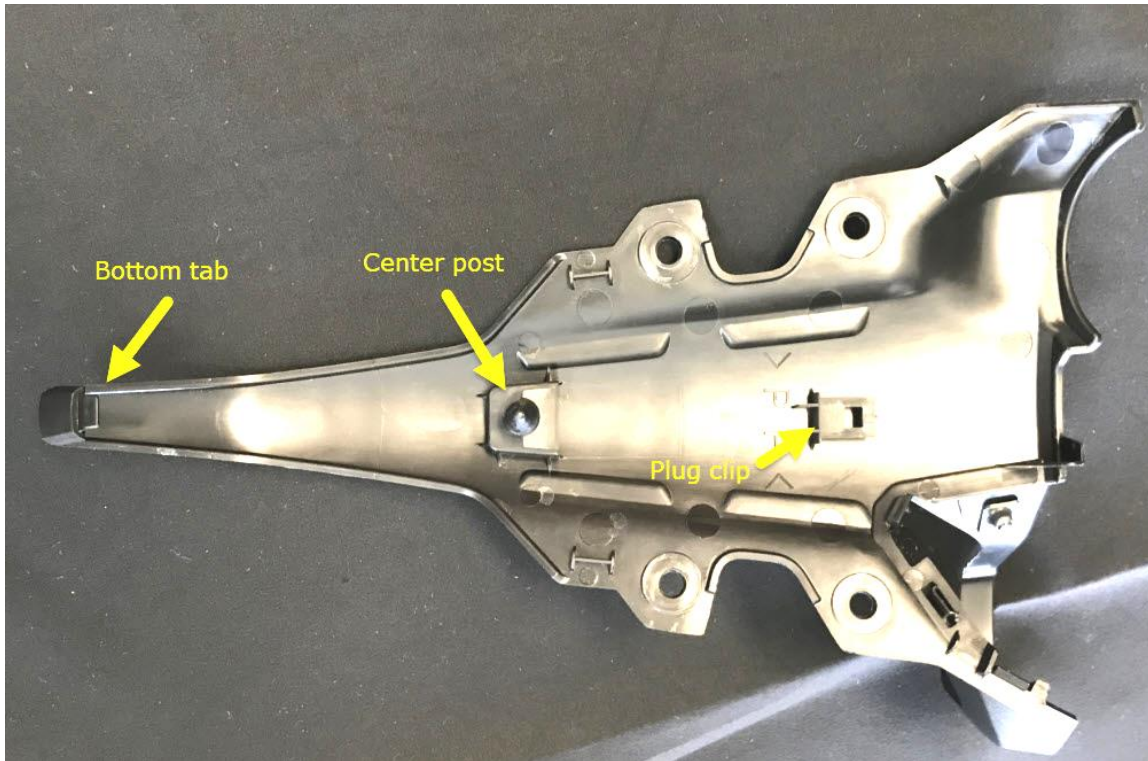
- (1) FZ-09-17 fly screen latch plate assembly
- (8) M5 Truss screws
- (8) M5 plastic flat washers
- (8) soft rubber washers



## STEP 1: Remove front plastic panel

Remove the four silver screws in front holding on the Yamaha cover panel as shown below. You will not need to remove the single black screw which holds a small cover just behind the instrument cluster, this will come off with the center panel.





The photo above shows what the center panel looks like from the back side. Once you have removed the four silver screws holding it down, removal of the plate takes 3 steps, in this order:

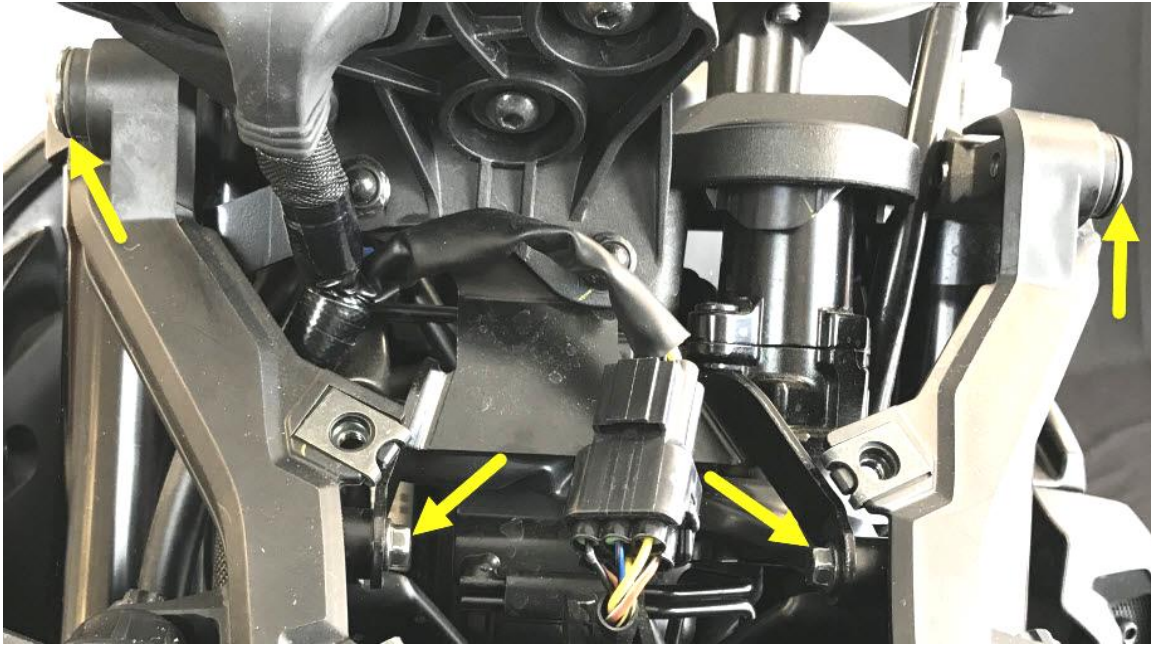
1. Pull up on the top of the panel to pop out the center post. As you lift up, rotate slightly toward the front as if the bottom (pointy nose) of the panel were hinged. NOTE: You will only be able to lift it enough to just pop that post out because the clipped-on electrical connector will prevent further removal.

2. Reach in from the top and slide the electrical connector off of the plug clip. You may need to insert a long thin flat-head screwdriver between the clip and the connector to release it. (See photo at right.)





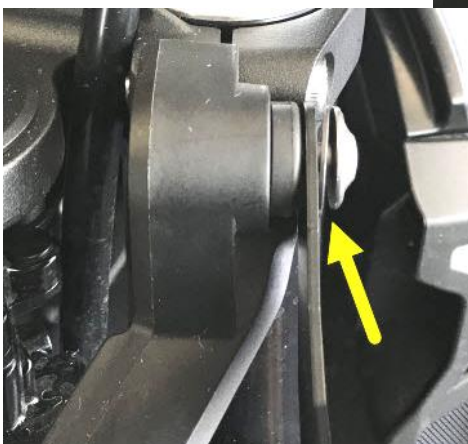
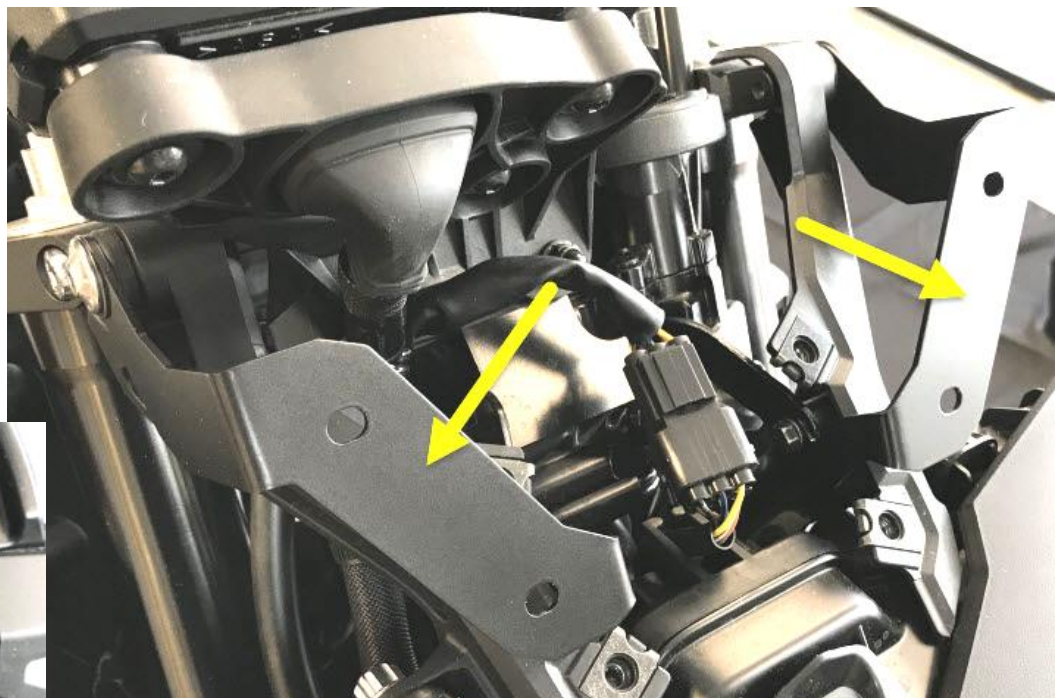
3. Once the wire connector is off, slide the panel down slightly toward the nose of the bike to pop out that bottom tab, then lift the panel off.



## STEP 2: Install front base brackets

The image above shows the four mounting points for the front base brackets. (Do not remove all of these bolts simultaneously; first do one side then the other.)

The photo at bottom right shows how the brackets attach to the bike. Remove a top and bottom bolt on one side, put bracket in place then re-install bolts. Make sure the washers on the top bolts are on the outside of our mounting brackets. (See photo below.)

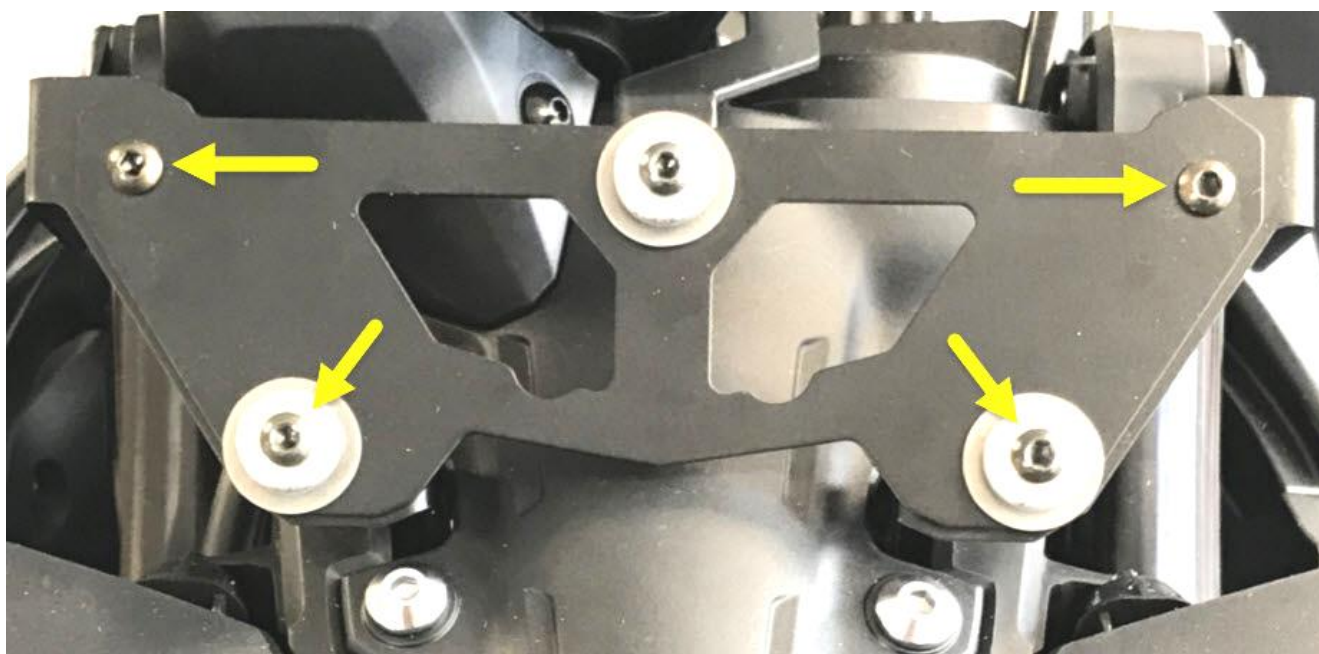


Once the front brackets are secured you can put the factory plastic center panel back in. Simply reverse the removal procedure.



### **STEP 3: Attach the Quick-Release Base Plate**

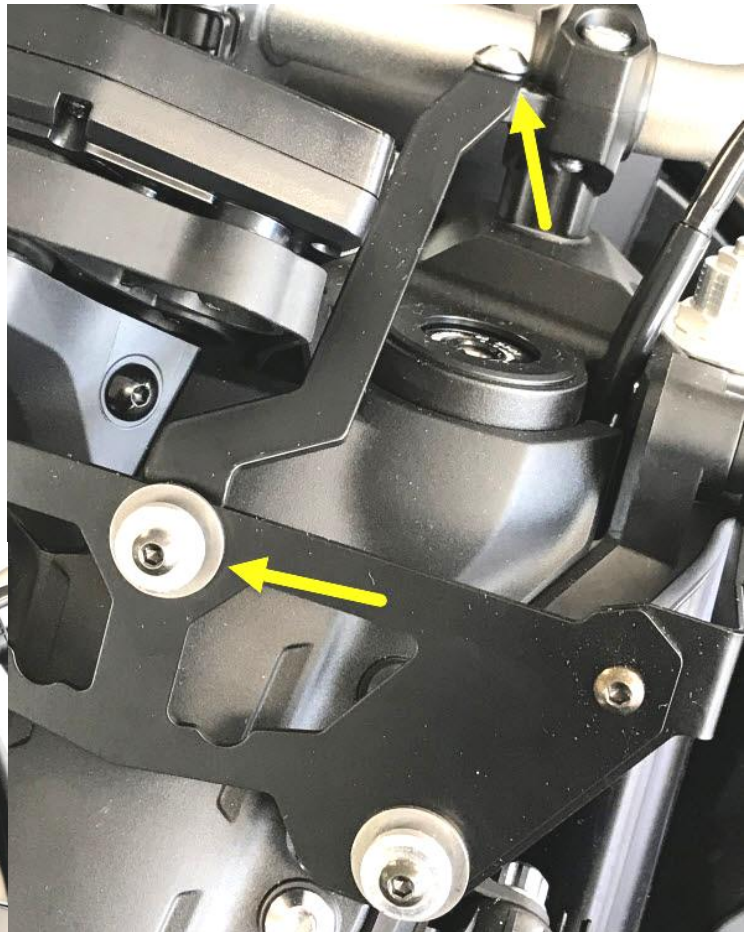
The quick-release base plate attaches using two of the mounting spools for the bottom holes, and two plain short screws for the top. The aluminum spools use M6 x 25 (1" long threads) button socket screws through the center of the spool, then a large thick flat washer beneath the spool, then run this through the base and base bracket using a flat washer and lock nut on the back side. For the upper holes use the M6 x 12 (1/2" long thread) screws through the plate and brackets then flat washer and lock nut on the back side. Tighten securely. **DO NOT** attach the top/center spool yet, that's coming in Step 4.





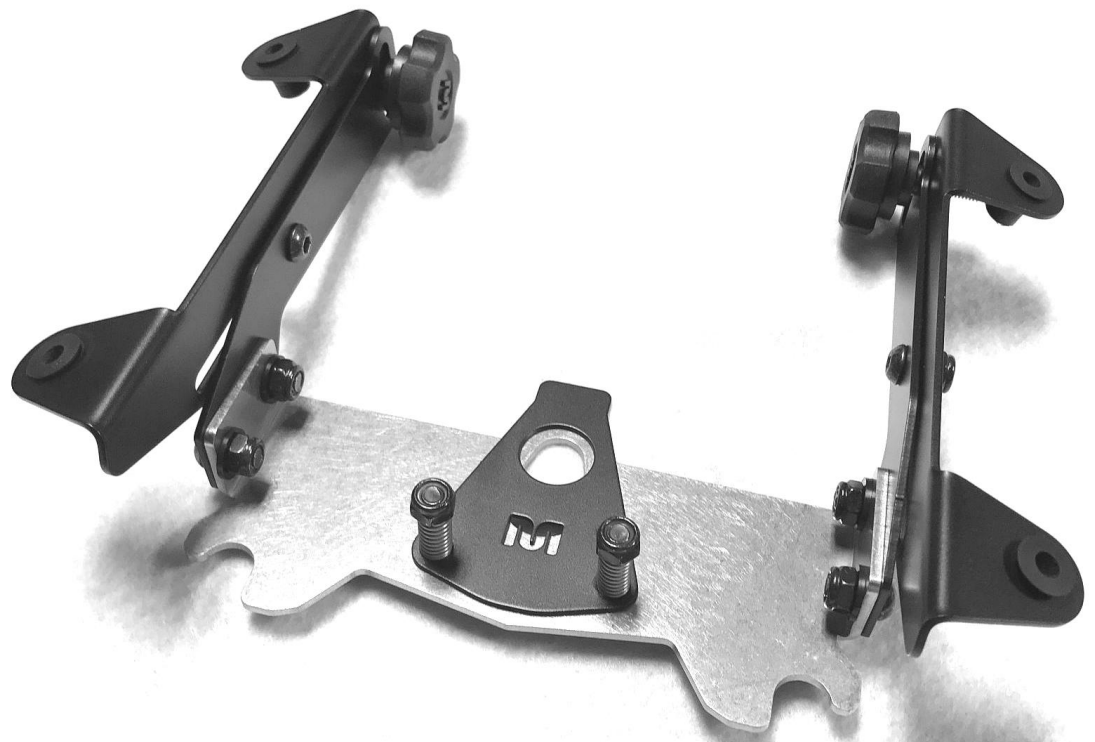
**STEP 4: Attach top bracket.**  
**-- SPOOLS ARE BLACK --**

Use the third spool and hardware to attach the top bracket to the base plate as seen in the photo at right. The bracket goes behind the plate and then attaches to the silver screw inside your left fork clamp. The final result is shown below.



**STEP 5: Adjustable brackets assembly.**

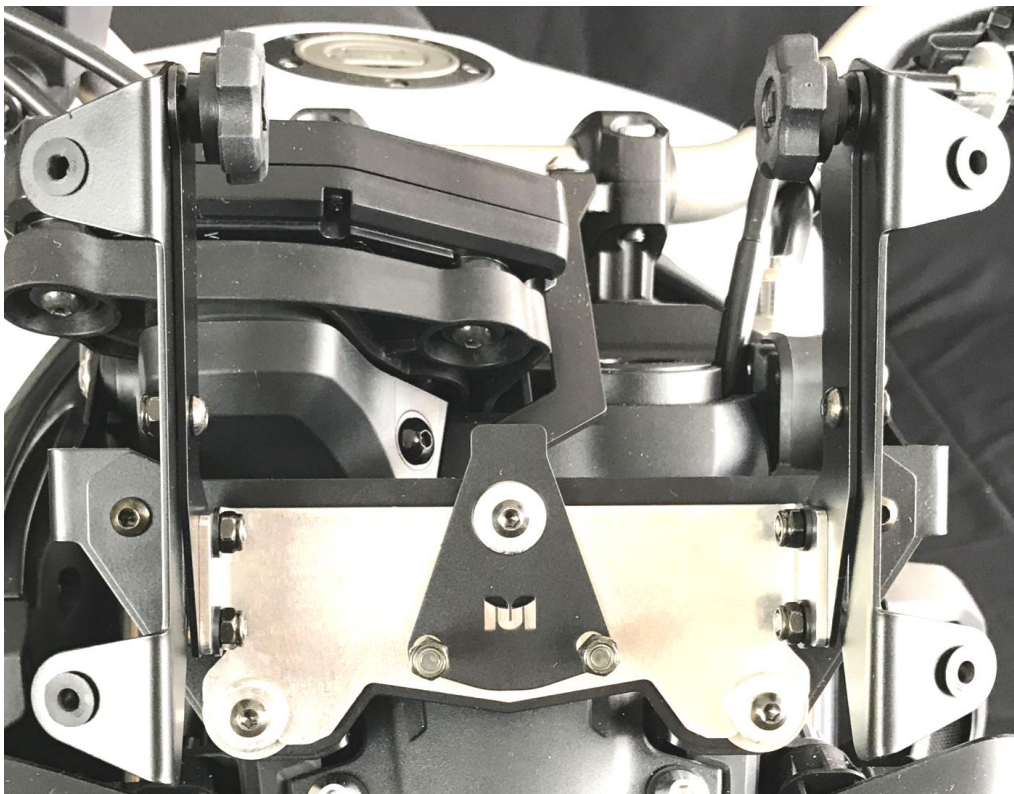
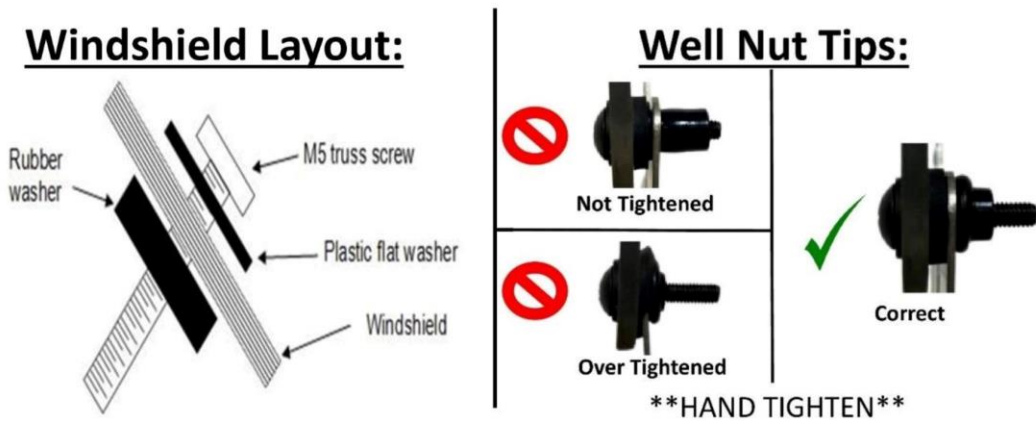
The two MadStad adjustable brackets bolt to the quick-release plate as seen in at right. Use M6 x 12 screws through the outside, and flat washers with lock nuts on the inside.



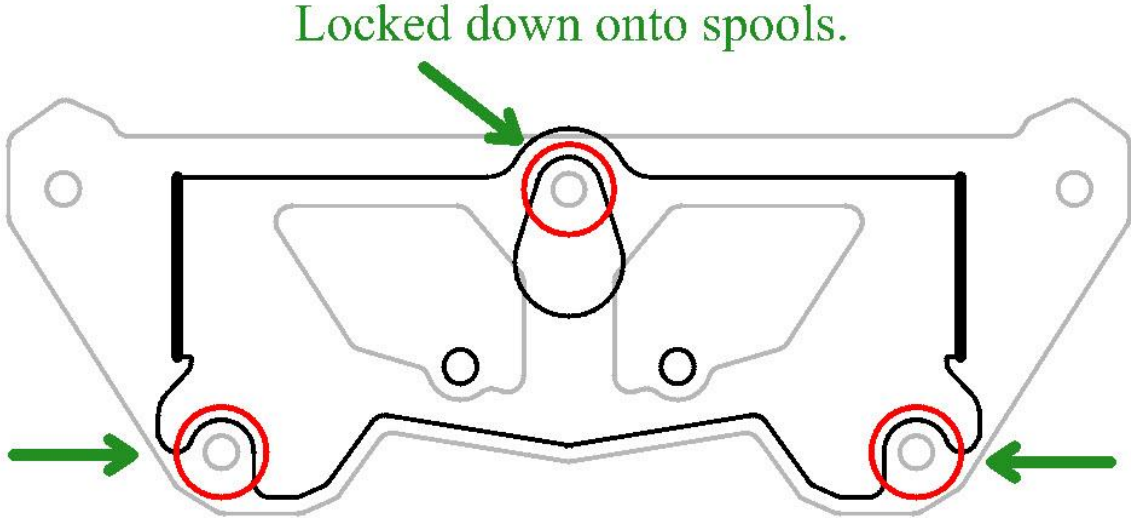
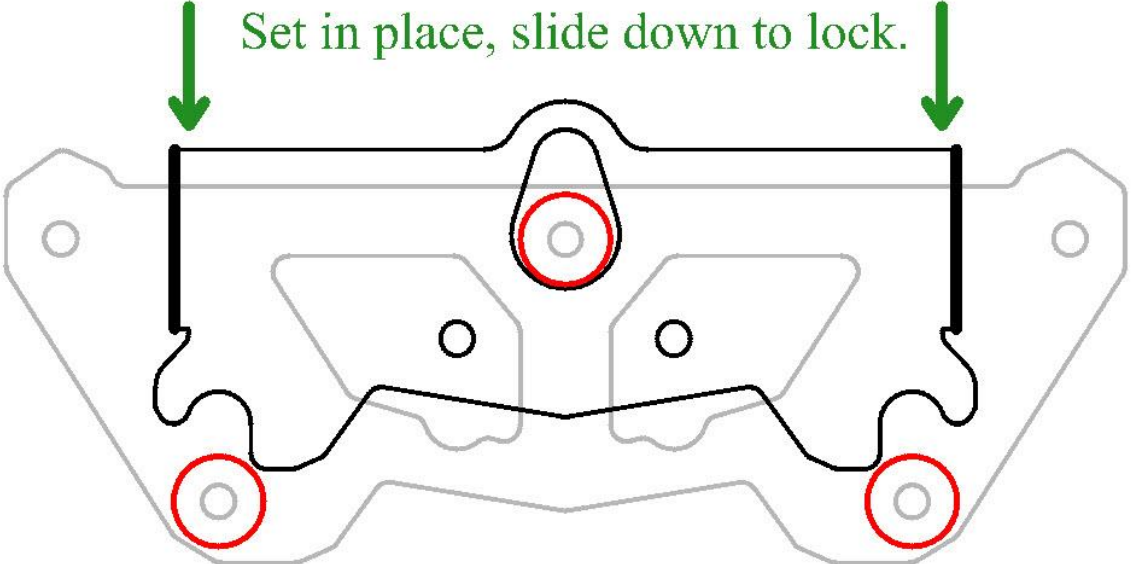
## STEP 6:

# Windshield Installation

1. Pre-install the Truss screws & washers into the windshield holes as shown in the image below.
2. Once all four of the screws are in place, gently guide the screws into the Well Nuts in the brackets until all four are set.
3. Hand tighten the Truss screws until they swell up behind the bracket and are firmly holding the windshield.



The process of attaching is simply to press the quick-release plate down onto the base spools, then slide it down until it stops and the center spring-loaded key snaps down over the black spool to lock everything in place. These two steps are illustrated here with the spools represented as red circles:





The spring-loaded black key in the center will pop up on its own when you press the quick-release plate onto the base. The top spool will slide right under it; **there is no need to hold the key during attachment!**



### **SPOOLS ARE BLACK**

**IMPORTANT:** If the key doesn't snap all the way down on its own, simply push down on the top tab to make sure it goes down around the top spool completely. **DO NOT** ride the bike until you are sure it is locked down fully!

Detaching the shield and bracket is simply the reverse procedure, but this time you may need to hold the key up off of the top spool as you pull upward. Otherwise it may try to reseat itself.

### **Fly Screen**

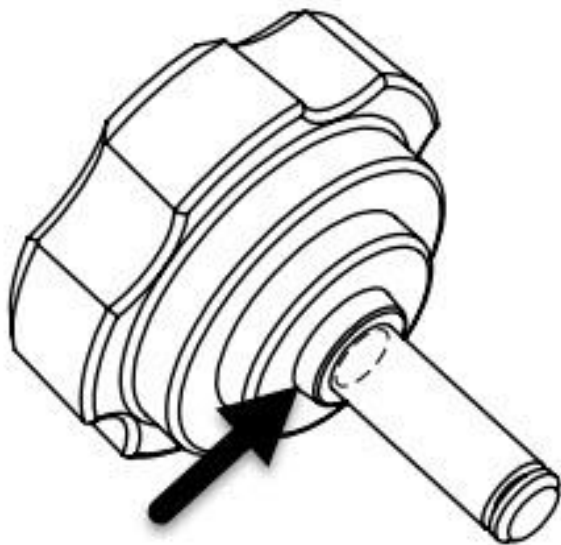
The fly screen quick-release assembly is basically the same as the adjustable bracket version, attaching and detaching the same way. The fly screen attaches to its quick-release plate the same way that the touring windshield does. There simply is no adjustability because the fly screen is too short to have much effect on wind protection. It does smooth the airflow out a bit around the instrument cluster so you should notice an improvement in comfort.

## Adjusting the MadStad Brackets

The big black knob screws release the brackets allowing the windshield to slide and tilt. These knob screws must always be tightened securely before riding. **DO NOT** attempt to adjust the brackets while riding! You must come to a complete stop before making adjustments. Also make sure that you do not set the windshield in such a way that causes your handlebars or hand guards (if installed) to hit the windshield when turning, or before reaching full lock.

To make adjustments, loosen the knobs 1-2 turns and set the windshield so the top edge is at about your chin level as you look straight ahead while seated on the bike. Set the angle at approximately 60 degrees. (Use the angle guide on the back page of this manual as a guide.) Tighten the knobs and go for a ride to see if you now have smooth airflow over and around your helmet. Do this on a calm day if possible; windy days make it hard to judge the airflow. Don't ever try to adjust the mount while in motion!

To try a different windshield position, bring the motorcycle to a complete stop and out of traffic. Loosen the two knob screws and tilt the windshield forward or back 2-3 degrees or so, and/or adjust it up or down if necessary. Re-tighten the knobs and go for another ride. Continue experimenting with different positions at different speeds until you find a combination of height and rake angle that eliminates buffeting and gives a smoother ride.



**NOTE:** These MadStad brackets have what we call a “posi-lock” system for angle adjustment. Each knob has a small tapered shoulder (shown at left) which seats itself into the curved adjustment slot on the brackets. As you are re-tightening the knobs, make sure this shoulder goes down into that slot rather than just clamping to the outside of the bracket. You may have to wiggle it a little as you tighten, but properly seating these knobs this will lock in the angle so that wind pressure cannot change your adjustment.



## **Disclaimer**

Neither MadStad Engineering nor its owners shall be liable for any damages, consequential or inconsequential, resulting from the use of our products. Installation of any of our products constitutes acceptance of these terms.

It is the responsibility of the user to make sure all fasteners are tightened securely, the windshield is mounted properly and the adjustment knobs are tightened snugly before putting the motorcycle in motion. MadStad systems ARE NOT intended to be adjusted while the vehicle is in motion; you must pull over out of the way of traffic and come to a complete stop before making any changes. The user must never place the windshield in such a position as to interfere with the safe and complete movement of the handlebars and controls.

## **Returns and Warranty**

MadStad adjustable brackets carry a lifetime warranty against manufacturing defects. This does not include cosmetic issues nor any parts that inherently wear out or degrade over time such as rubber and plastic parts. Windshields, deflectors, and other similar plastic parts are warranted for 1 year against manufacturing defects, not against cosmetic issues or issues related to normal wear and tear. Please visit our website for further details.

# MadStad Engineering, Inc.

1451 E. Jefferson St.  
Brooksville, FL 34601 U.S.A.

Phone: 352-848-3646

Fax: 352-240-3911

Web Site: <http://www.madstad.com>

Email: [support@madstad.com](mailto:support@madstad.com)

*Thank you for your support, and ride safely!*

