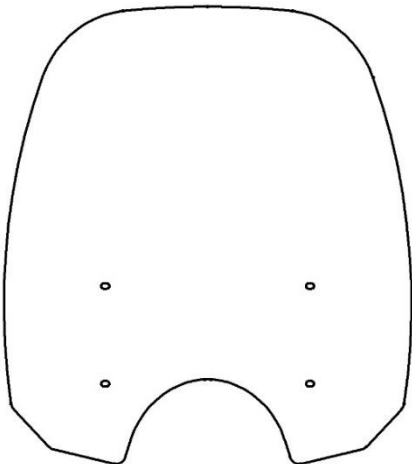


Triumph Speedmaster (2018-Up)

** Please read this entire manual before proceeding with the installation **

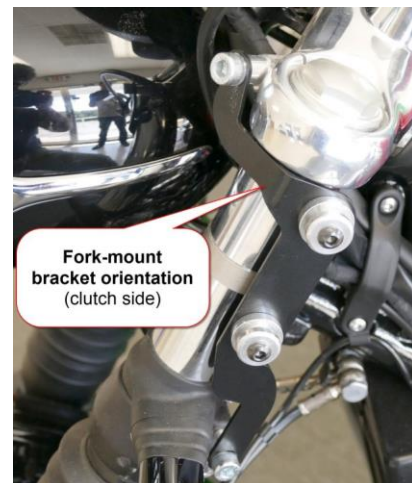
- (4) M8 X 45 Button Head Screws
- (2) M8 Flat Washers
- (4) ½" Aluminum M8 Spacers
- (4) M5 X 20 Truss Screws
- (4) #10 Plastic Flat Washers
- (4) M5 Soft Rubber Washers
- (4) M6 X 16 Button Screws
- (8) ¼" Black Plastic Washers
- (4) M6 Nylock Nuts



1. Overview

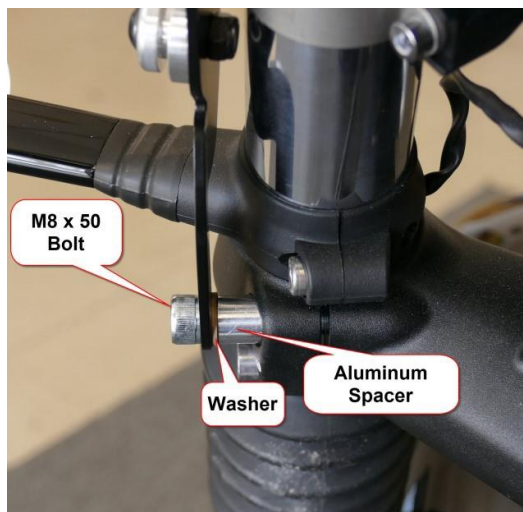
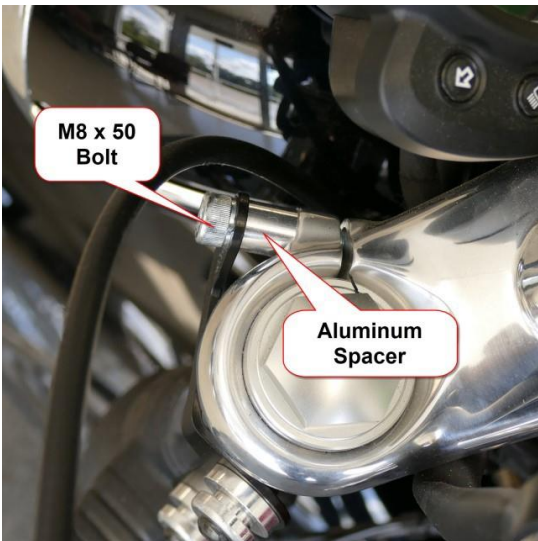
The MadStad Quick Release brackets come in two parts – the lower brackets that are mounted on the forks of the bike with spools that allow for the quick removal of the upper brackets, which hold the windshield.

Note: The spool shown in this manual are now black instead of aluminum (white).



2. Lower Bracket Installation

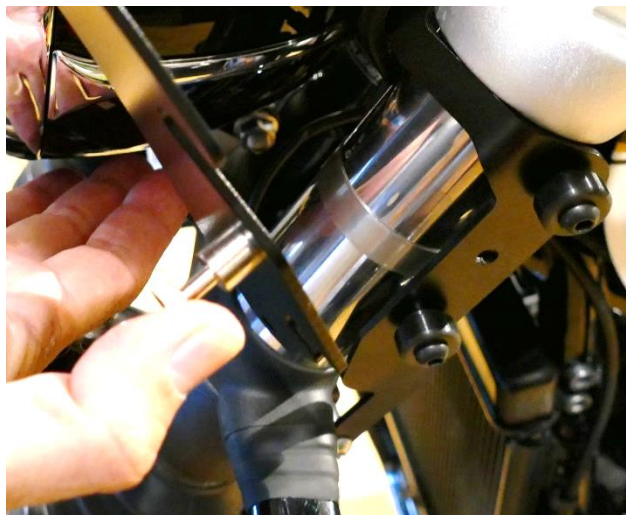
- A. Remove the factory top bolt on the bottom of the fork tree. Install the brackets as shown in the picture on the right. Do not fully tighten.



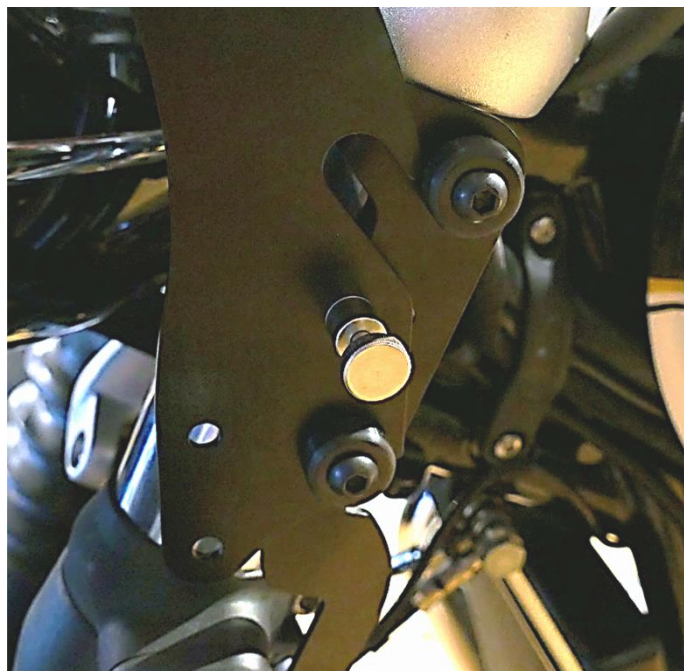
- B. Remove the factory bolt on the top fork tree. Install the bracket as shown in picture on the left. Now fully tighten both top and bottom bolts.

3. Upper Bracket Installation

- A. Pull the pin knob all the way out while turning it counterclockwise until it locks in the recessed position.



- B. Slide the brackets onto the lower bracket spools.





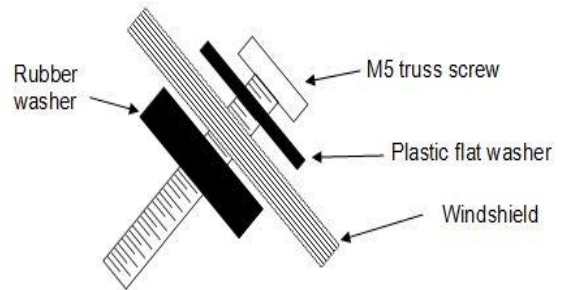
C. Line up the pin to the hole between the spools, then turn the pin knob till it unlocks, allowing the pin to come out and snap into the hole.

3. Windshield/Fly Screen Installation

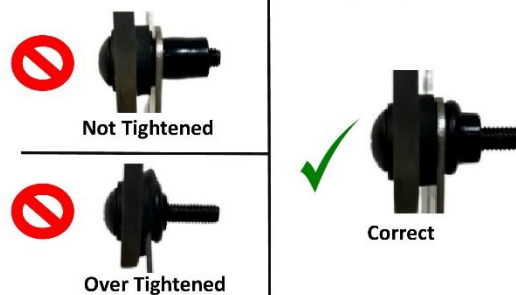


The upper brackets fit and work with both the Touring Windshield and the Fly Screen. Installation is the same for both.

- A. Pre-install the Truss screws & washers into the windshield holes as shown in the image at right.
- B. Once all four of the screws are in place, gently guide the screws into the Well Nuts in the brackets until all four are set.
- C. Hand tighten the Truss screws until they swell up behind the bracket and are firmly holding the windshield. Be sure not to overtighten.



Well Nut Tips:



****HAND TIGHTEN****

5. Lower Deflector Installation



A. Attaching Spools

This quick-release system attaches to the Touring Kit Brackets by adding the Spool Hardware Set to the lower holes on the Touring Kit Brackets



Installed

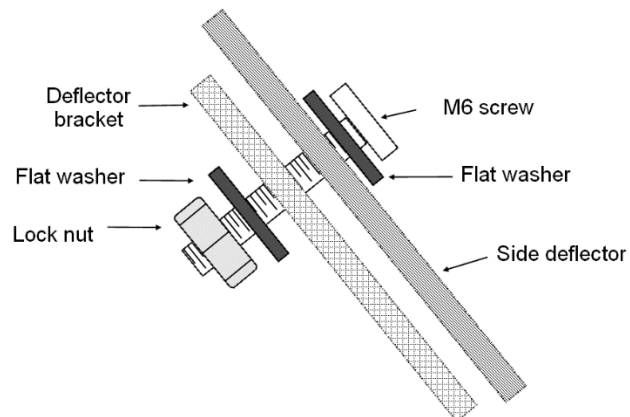
B. Installing the Deflectors

The picture shows the order that the Washers and Lock Nut go on when bolting in the deflectors to the Lower Deflector brackets.

C. Attaching the Lower Deflectors

C.1. Set brackets onto the Black Mounting Spools.
Rotate locking tab up as shown below.

C.2. Fully seat brackets into the slots on the spools



C.3. Pull up on the locking tab and rotate between the spools. You may need to push on the spring from the inside

C.4. Make sure the locking tab is fully pushed down between the two spools.



Adjustment Knobs

To adjust the windshield for height and/or angle you must loosen the knobs about 1-2 turns to loosen the brackets allowing them to slide back and forth. Gently push or pull on the shield to position it where you want it. Once you have the brackets adjusted, you do not need to tighten the knobs down hard, just snug enough to prevent them from moving out of adjustment.

Adjustments

You will have at least 2" of vertical travel and 20 degrees of angle to work with. We suggest setting the angle first, usually about the same angle as the forks on the bike. Loosening the knobs allows for adjustments. Take the bike out and test. You may want to change the angle a little or change the height – this is very much a trial and error type of experiment. **Be sure to stop and pull over when making adjustments.** Different weather conditions and different speeds will help in determining what works best for you.

Disclaimer

Neither MadStad Engineering nor its owners shall be liable for any damages, consequential or inconsequential, resulting from the use of our products. Installation of any of our products constitutes acceptance of these terms. It is the responsibility of the user to make sure all fasteners are tightened securely; the windshield is mounted properly and the adjustment knobs are tightened snugly before putting the motorcycle in motion. MadStad systems ARE NOT intended to be adjusted while the vehicle is in motion; you must pull over out of the way of traffic and come to a complete stop before making any changes. The user must never place the windshield in such a position as to interfere with the safe and complete movement of the handlebars and controls.

Returns and Warranty

MadStad adjustable brackets carry a lifetime warranty against manufacturing defects. This does not include cosmetic issues nor any parts that inherently wear out or degrade over time such as rubber and plastic parts. Windshields, deflectors, and other similar plastic parts are warranted for 1 year against manufacturing defects, not against cosmetic issues or issues related to normal wear and tear. Please visit our website for further details.

MadStad Engineering, Inc.

1451 E. Jefferson St.

Brooksville, FL 34601

352-848-3646

Web Site: <http://www.madstad.com>

Email: support@madstad.com

Thank you for your support, and ride safely!