



Adjustable Windshield System

Triumph Rocket III

Please read this entire manual before proceeding with installation.

What is in the box:

- (1) Set of preassembled MadStad adjustable windshield brackets
- (2) Pre-assembled fork-mount brackets
- (2) M8 x 50mm bolts
- (2) M8 aluminum spacers
- (2) M10 x 50mm bolts
- (2) M10 aluminum spacers
- (4) M5 Philips screws
- (4) M5 plastic washers
- (4) soft rubber washers

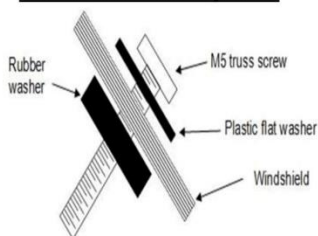
The MadStad quick-release windshield (and optional fly screen) clip onto compact brackets that stay attached to the forks. Pages 2 and 3 show how to attach these brackets.

Windshield Installation

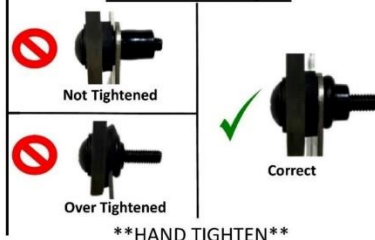
Windshield Installation

1. Pre-install the Truss screws & washers into the windshield holes as shown in the image below.
2. Once all four of the screws are in place, gently guide the screws into the Well Nuts in the brackets until all four are set.
3. Hand tighten the Truss screws until they swell up behind the bracket and are firmly holding the windshield.

Windshield Layout:



Well Nut Tips:



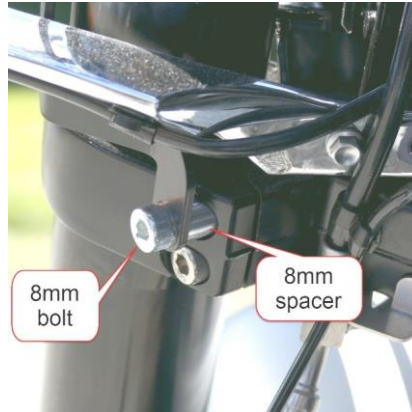
MadStad Rocket III Installation

Fork-Mount Brackets:

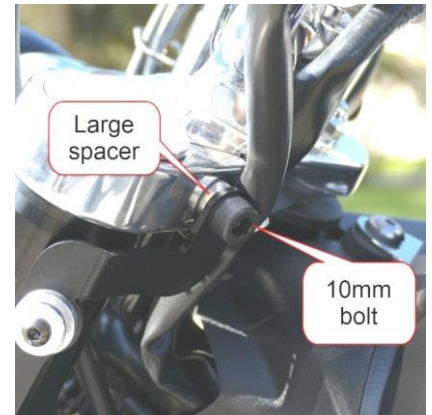
Install these first. Everything else attaches to these brackets.



Remove the factory top bolt on the bottom fork clamp. Install bracket as shown below but do not fully tighten.



Remove the factory bolt on the top fork clamp. Install bracket as shown then fully tighten both top and bottom.



Attaching the Windshield or Fly Screen:

We recommend that you snap the windshield brackets onto the bike BEFORE attaching the windshield. Once the shield brackets are locked in place, then screw the shield to the brackets. After that you can remove and install them as a unit.

1. Position the locking tab away from the two mounting slots.



2. Set brackets onto aluminum mounting spools.



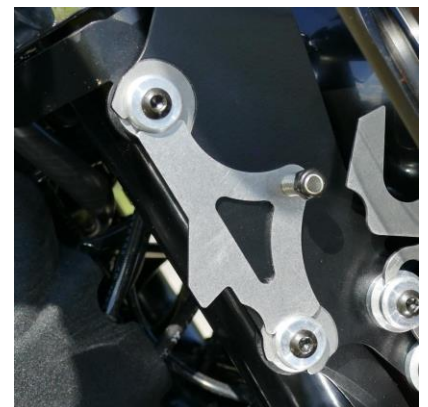
3. Fully seat brackets into the slots on the spools.



4. Pull up on the locking tab and rotate onto the spools.

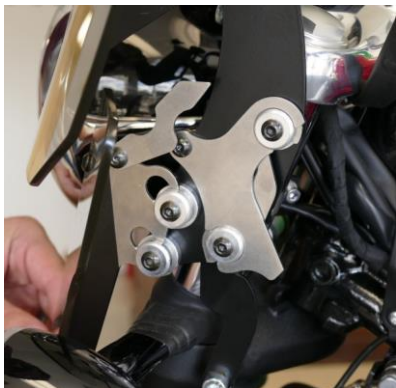


5. Make sure the locking tab is fully pushed down over the two spools.



Attaching the Lower Deflectors:

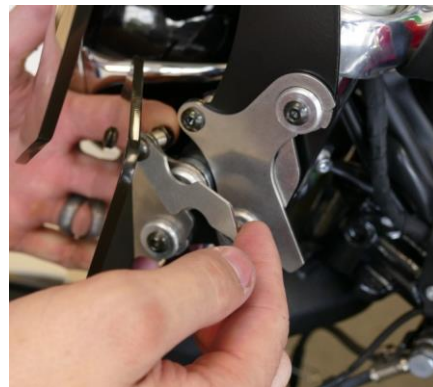
Set brackets onto aluminum mounting spools. Rotate locking tab up as shown.



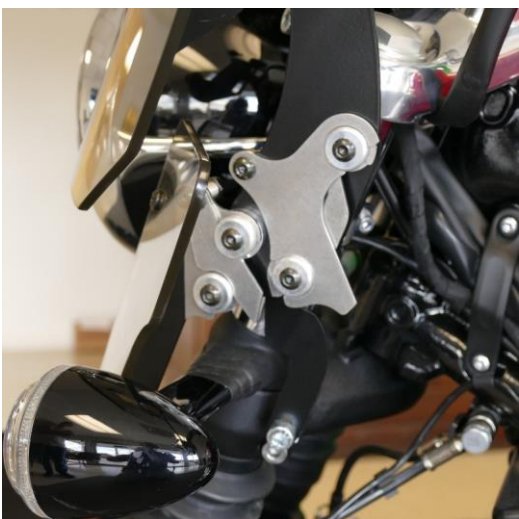
Fully seat brackets into the slots on the spools.



Pull up on the locking tab and rotate between the spools. You may need to push on the spring from the inside.



Make sure the locking tab is fully pushed down between the two spools.



Adjusting the Brackets

The knob screws release the brackets allowing the windshield to slide and tilt. These knob screws must always be tightened securely before riding. **DO NOT** attempt to adjust the brackets while riding! You must come to a complete stop before making adjustments. Also make sure that you do not set the windshield in such a way that causes your handlebars or hand guards (if installed) to hit the windshield when turning, or before reaching full lock.

To make height adjustments, loosen the knobs 1 turn and pull up or push down on the shield so the top edge is at about your chin level as you look straight ahead. Loosen the knobs 2-3 turns to set the angle at about the middle of the bracket range, tighten the knobs and go for a ride to test. Do this on a calm day if at all possible; windy days make it hard to judge the airflow.

Disclaimer

Neither MadStad Engineering nor its owners shall be liable for any damages, consequential or inconsequential, resulting from the use of our products. Installation of any of our products constitutes acceptance of these terms.

It is the responsibility of the user to make sure all fasteners are tightened securely, the windshield is mounted properly and the adjustment knobs are tightened snugly before putting the motorcycle in motion. MadStad systems **ARE NOT** intended to be adjusted while the vehicle is in motion; you must pull over out of the way of traffic and come to a complete stop before making any changes. The user must never place the windshield in such a position as to interfere with the safe and complete movement of the handlebars and controls.

Returns and Warranty

MadStad adjustable brackets carry a lifetime warranty against manufacturing defects. This does not include cosmetic issues nor any parts that inherently wear out or degrade over time such as rubber and plastic parts. Windshields, deflectors, and other similar plastic parts are warrantied for 1 year against manufacturing defects, not against cosmetic issues or issues related to normal wear and tear. Please visit our website for further details.

MadStad Engineering, Inc.

1451 E. Jefferson St., Brooksville, FL 34601 USA

Phone: 352-848-3646

Email: support@madstad.com

Thank you for your support, and ride safely!