

MADSTAD MOTORSPORTS INSTALLATION GUIDE

ADJUSTABLE WINDSHIELD SYSTEM FOR KTM 890 ADVENTURE / ADVENTURE R (2023 – UP)

Part# RKKT-8A23-K814-XX

- READ ENTIRE MANUAL PRIOR TO INSTALLATION -

**Kit Contents:**

(1) Touring Windshield  
(1 pair) Side Deflectors  
(1 pair) Headlight Frame Panels  
(1 pair) Adjustable Windshield  
Brackets  
(1) Cross Bar

**Brackets/Panels:**  
(2) M5 x 16 Phillips truss screws  
(8) M5 flat plastic washers  
(2) M5 clip nuts  
(6) M5 x 12 button socket screws

**Hardware Pack:**

**Cross Bar:**  
(2) M6 x 12 button socket screws  
(2) M6 lock washers  
(2) M6 flat metal washers

**Windshield & Side Deflectors:**

(8) M5 x 20 Phillips truss screws  
(8) M5 soft rubber washers  
(8) M5 flat plastic washers

1. **Remove Factory Windshield:** Take off the stock windshield by removing the four windshield screws. You will not be reusing the stock windshield screws or windshield.

2. **Attach Madstad Bracket:** Starting on one side, align the **top hole** of a Madstad Adjustable Windshield Bracket over the **highest factory windshield mount hole**. For the Madstad brackets, these will be the holes **without** rubber well nuts inserted.

NOTE: **\*\*The bracket knob should be positioned upward and outward.\*\*** Use the provided M5 x 12 Button Socket Screw (no washer) to secure the bracket into place - *do not yet fully tighten.*

**3. Attach Madstad Headlight Frame:** *Remove factory rubber grommet next to the headlight.* Insert the provided M5 Clip Nut over the hole next to the headlight. Align the corresponding Madstad Headlight Frame Panel over the clip nut. Use the provide M5 x 16 Phillips Truss Screw and M5 Flat Plastic Washer to secure the frame into place - *do not yet fully tighten.* (Some mild pressure can be applied on the panel while turning the screw to catch the clip nut threading).

**4. Headlight Frame cont'd & Bracket:** Align the *top hole* of the Headlight Frame Panel over the *bottom hole* of the Adjustable Bracket/factory mount. Using the provided M5 x 12 Button Socket and flat plastic washer, secure into place – *do not yet fully tighten.*

**5. Headlight Frame Cont'd:** Align the side - *furthest back hole* of the Headlight Frame Panel over the factory hole. Use the provided M5 x 12 Button Socket and M5 Flat Plastic Washer and secure into place – *do not yet fully tighten.*

**6. Go back and fully tighten all the above-listed screws.**

**7. Repeat Steps 1 – 6 on the opposite side.**

**8. Mount the Cross Bar:** Slip the Madstad Cross Bar between the brackets – *placing the pin side into the bracket slot.* (This prevents the cross bar from turning). Using the provided M6 x 12 Button Socket Screws, M6 Locking Washers, and M6 Flat Metal Washers, secure the Cross Bar into place and fully tighten both sides. *SCREW – LOCKING WASHER – FLAT METAL WASHER*

**9. \*Attach the Side Deflectors and Windshield:** Orient one side deflector as shown in the referenced photo in this manual or Madstad online store product page. Tighten securely using the provided M5 x 20 Phillips Truss Screws. *SCREW – PLASTIC WASHER – WINDSHIELD – RUBBER WASHER*

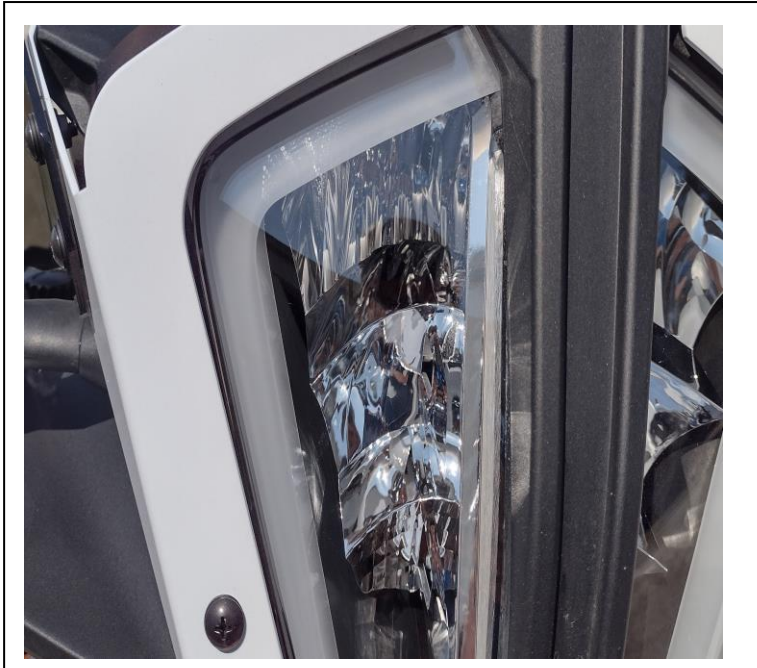
**\*See below diagram for Windshield Installation. It also applies to the Side Deflectors.**



1, 2. With the factory windshield removed, Install Bracket to Stock Mount. Top hole of each.



3. Grommet removed, insert Clip Nut Over Factory Mount Hole

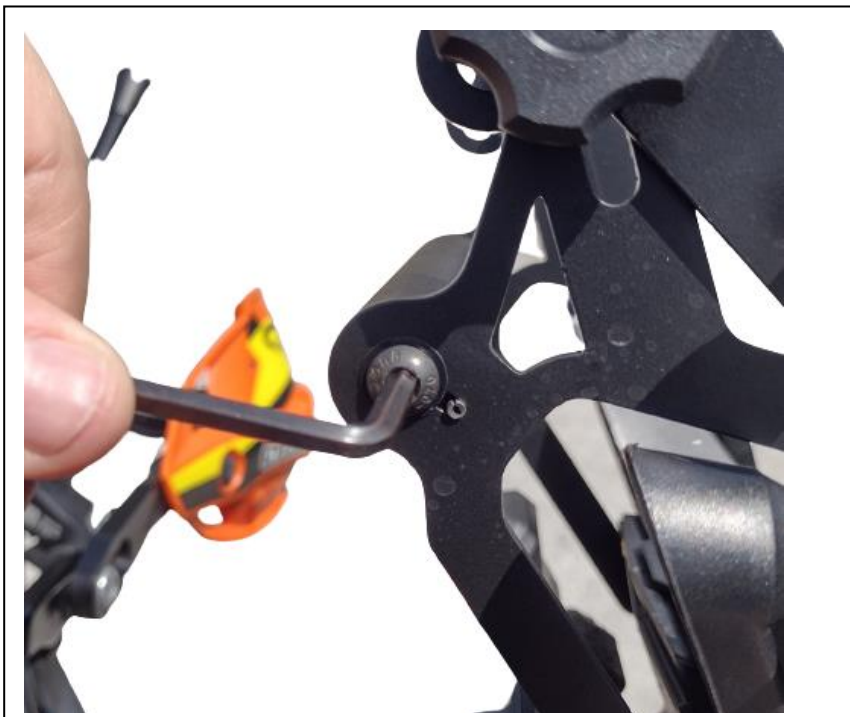


3. Cont'd. Secure Headlight Frame Panel to installed Clip Nut

4. Secure Headlight Frame Panel to Bracket/factory mount Bottom Hole



5. Secure Headlight Frame Panel to Stock Rear Hole



7, 8. After tightening all screws in previous steps, install the Crossbar

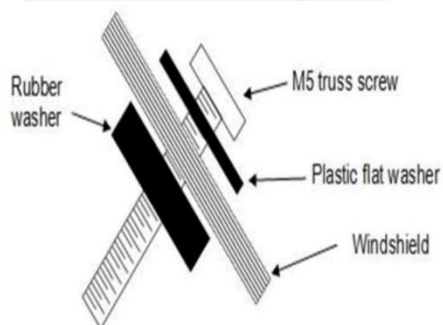


9. Attach  
Side  
Deflectors

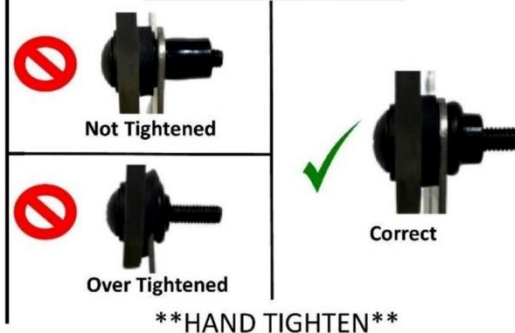
## Windshield Installation

1. Pre-install the Truss screws & washers into the windshield holes as shown in the image below.
2. Once all four of the screws are in place, gently guide the screws into the Well Nuts in the brackets until all four are set.
3. Hand tighten the Truss screws until they swell up behind the bracket and are firmly holding the windshield.

### Windshield Layout:



### Well Nut Tips:



## Adjusting the Windshield Brackets

The two black knobs release the brackets allowing the windshield to slide and tilt. These knobs must always be tightened securely before riding. DO NOT attempt to adjust the brackets while riding; you must come to a complete stop before adjusting!

Loosen the knobs 1 turn to release the shield for height adjustments, 3-4 turns for angle adjustments. Set the windshield so the top edge is at about your chin level as you look straight ahead while seated on the bike. Set the angle at approximately 60 degrees. (Use the angle guide on the back page of this manual as a guide.) Tighten the knobs and go for a ride to see if you now have smooth airflow over and around your helmet. Do this on a calm day if possible; windy days make it hard to judge the airflow. To try a different windshield position, bring the motorcycle to a complete stop and out of traffic. Loosen the two knob screws and tilt the windshield forward or back 2-3 degrees or so, and/or adjust it up or down if necessary. Re-tighten the knobs and go for another ride until you find the setting that works best for you.

### Disclaimer

Neither MadStad Engineering nor its owners shall be liable for any damages, consequential or inconsequential, resulting from the use of our products. Installation of any of our products constitutes acceptance of these terms.

It is the responsibility of the user to make sure all fasteners are tightened securely; the windshield is mounted properly, and the adjustment knobs are tightened snugly before putting the motorcycle in motion. MadStad systems ARE NOT to be adjusted while the vehicle is in motion; you must pull over out of the way of traffic and come to a complete stop before making any changes. The user must never place the windshield in such a position as to interfere with the safe and complete movement of the handlebars and controls.

### Returns and Warranty

MadStad adjustable brackets carry a lifetime warranty against manufacturing defects. This does not include cosmetic issues nor any parts that inherently wear out or degrade over time such as rubber and plastic parts. Windshields, deflectors, and other similar plastic parts are warrantied for 1 year against manufacturing defects, not against cosmetic issues or issues related to normal wear and tear. Please visit our website for further details.